



# New Nintendo 3DS Cover Plate Replacement

This guide will tell you how to replace the...

Written By: ethan2226



# INTRODUCTION

This guide will tell you how to replace the Cover Plates on the New Nintendo 3DS.

## TOOLS:


[Phillips #0 Screwdriver](#) (1)  
[New Nintendo 3DS Stylus](#) (1)  
[iFixit Opening Tool](#) (1)

## PARTS:

[New Nintendo 3DS Cover Plate #050 - Glow in the Dark Boo](#) (1)  
[New Nintendo 3DS Cover Plate - Kanji](#) (1)  
[New Nintendo 3DS Cover Plate #067 - Super Mario Maker](#) (1)  
[New Nintendo 3DS Cover Plate #056 - Legend of Zelda: Majora's Mask](#) (1)  
[New Nintendo 3DS Cover Plate #055 - The Legend of Zelda](#) (1)  
[New Nintendo 3DS Cover Plate #063 - Pokemon Super Mystery Dungeon](#) (1)  
[New Nintendo 3DS Cover Plate EU028 - Colorful Yoshi](#) (1)  
[New Nintendo 3DS Cover Plate - Style Savvy](#) (1)

## Step 1 — Placing the system on a flat table.



 **Ensure your device is powered off before proceeding. Failure to do so may result in electrical shock or damage to the device.**

- Place the system on a flat stable surface.
- The Cover Plates will ONLY work with the New Nintendo 3DS. They are not compatible with New Nintendo 3DS XL or any other Nintendo system.

## Step 2 — Unscrewing the back cover plate.



- Use a size #0 phillips-head screwdriver to loosen the screws from the back cover plate. The screws are attached to the cover, so they will not come out completely.

### Step 3 — Prying up the back cover plate.



- Use the nub on the end of the stylus , a fingernail or a plastic opening tool to gently pry on the small slots on each side near the L and R buttons. Once the cover plate begins to separate from the system, gently remove it.



#### Step 4 — Prying the front cover plate.



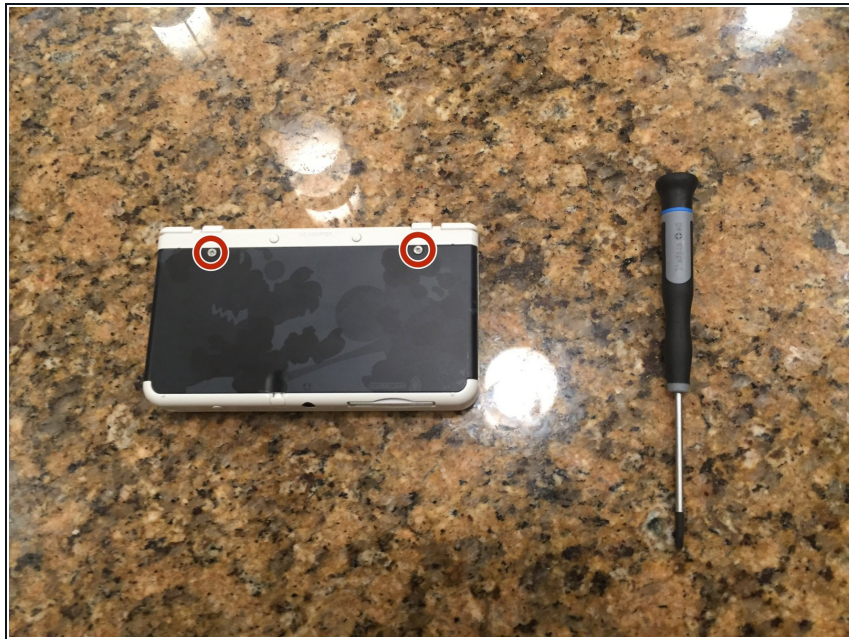
- Use the nub on the end of the stylus, a fingernail, or a plastic opening tool to gently pry on the small slots on each side near the L and R buttons. Once the cover plate begins to separate from the system, gently remove it.

#### Step 5 — Attaching the front cover plate.



- Attach the new front cover plate.

## Step 6 — Attaching the back cover plate.



- Attach the new back cover plate and tighten the two #0 phillips-head screws.

---

You have changed the cover plates on your New Nintendo 3DS system.