



# Disassembling BT Baby Monitor 250 Power switch

How to dismantle, resolder power switch, and reassemble the BT 250 Baby Monitor

Written By: davidmpye



---

# INTRODUCTION

How to dismantle, resolder power switch, and reassemble the BT 250 Baby Monitor

---



## TOOLS:

- [Essential Electronics Toolkit](#) (1)
  - [Soldering Iron](#) (1)
-

## Step 1 — Remove battery cover and batteries



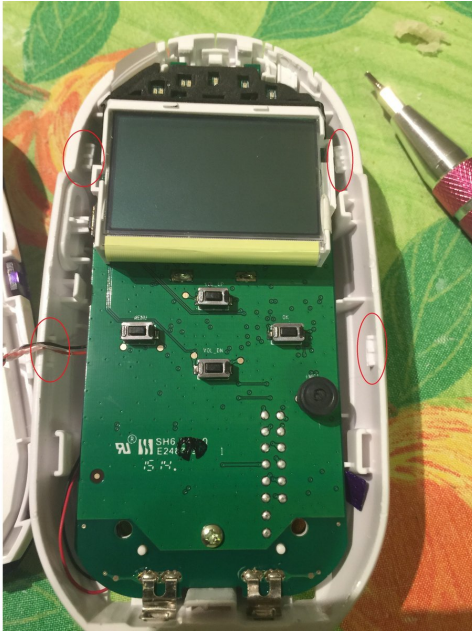
- Unclip the battery cover, and remove the batteries (they're a tight fit - the purple ribbon should help though)

## Step 2 — Remove the two screws at the bottom of the battery compartment



- Remove the two phillips screws at the lower edge of the battery compartment

### Step 3 — Separate the casing



- The casing is now held together by a pair of snap-fixings on each side, which will require careful prising apart.
- Using the picture as a guide to show where the catches are (red circles), use a small screwdriver or a spudger-type tool to release them levering outwards, then carefully separate the two halves of the casing

### Step 4 — Release the LCD

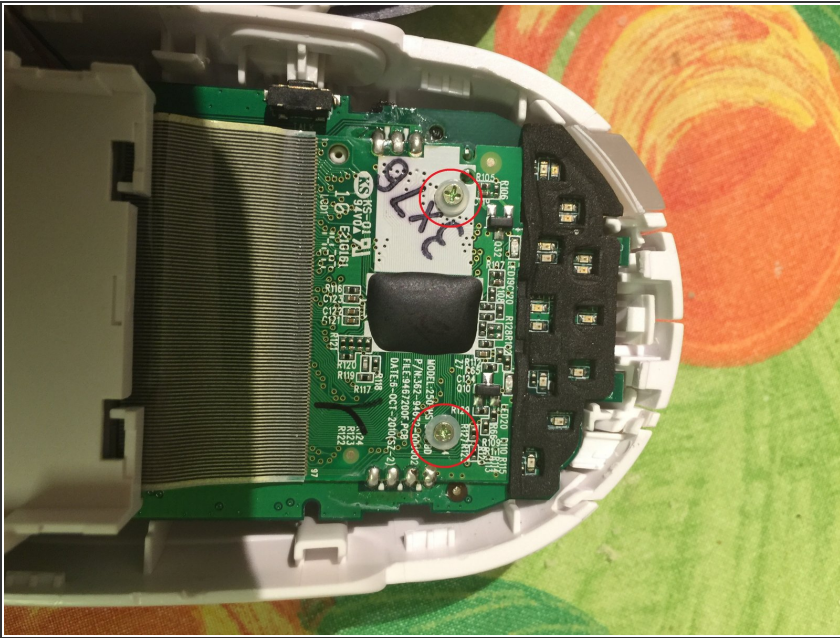


- The LCD is held on by a pair of small plastic lugs, one each side. Release these one at a time, while

gently lifting the LCD up from the board.

- Once both clips are released, it will hinge forward and down.

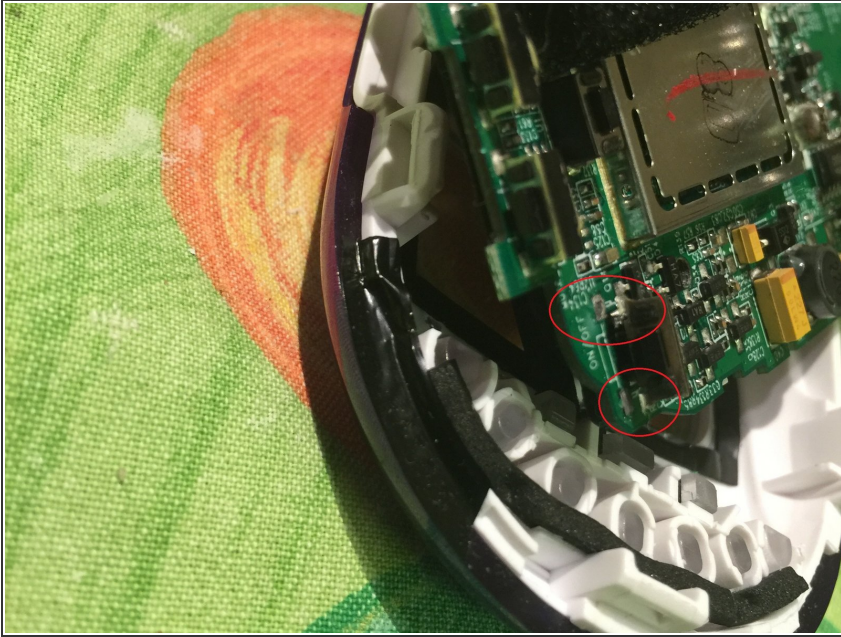
## Step 5 — Release PCB from case



- Remove the two screws from under the LCD
- Remove the single screw in the middle of the lower part of the PCB
- Gently bend up the two charging connectors on the lower edge of the PCB that stick through the case to free it
- Lift the PCB from the case, lower edge first



## Step 6 — Inspect and repair loose switches



- With the PCB removed, inspect the switches along the top edge.
- On mine, the solder holding the switch mounting tabs to the PCB had failed, leaving both tabs and pads intact
- Carefully resolder these, ensuring enough heat is applied to ensure a good joint, but without damaging neighbouring components

## Step 7 — Reassemble



- Reassembly is the reverse of dismantling.
- Remember to bend the charging connectors back into place so they are correctly seated
- Replace the vibrate motor into its' groove.
- Ensure the switches all operate correctly before clipping the two case halves back together - sometimes the little pieces of adhesive foam on the 'button pressers' need to be adjusted.

To reassemble your device, follow these instructions in reverse order.