



# Droid Ultra XT1080 Front assembly with frame

## Replacement

For this repair I replaced the LCD and Digitizer that comes with a frame. This repair guide will also work for a Droid Maxx

Written By: Ricardo Martinez



---

## INTRODUCTION

For this repair I replaced the LCD and Digitizer that comes with a frame. When ordering the part you should make sure it has the frame, because if you repair the front assembly without the frame, there will always be a slight lift in the screen. If you repair it without the frame it will still work, but you will run the risk of cracking the screen again due to that slight lift.



### TOOLS:

- [iSesamo Opening Tool](#) (1)
  - [T5 Torx Screwdriver](#) (1)
  - [T3 Torx Screwdriver](#) (1)
  - [Spudger](#) (1)
-

## Step 1 — Front assembly with frame



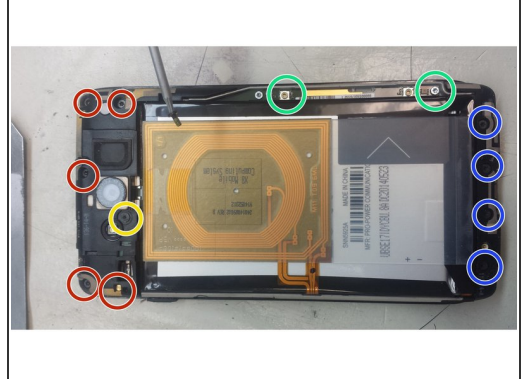
- Start by removing the Sim card tray, which also happens to be your volume button

## Step 2



- I personally used an iSesamo tool to unclip the tabs off the back housing, You can also use the Jimmy or some plastic prying tools.
- **Do Not** pry the back housing around the bottom of the screen. Pry on the left, right, and top. After that the back housing should slide off on the bottom.

## Step 3



● T5 Torx screws

● T3 Torx screw

● T5 Torx screws

● T5 Torx screws

⚠ When putting back together, do not tighten the screws too tight.

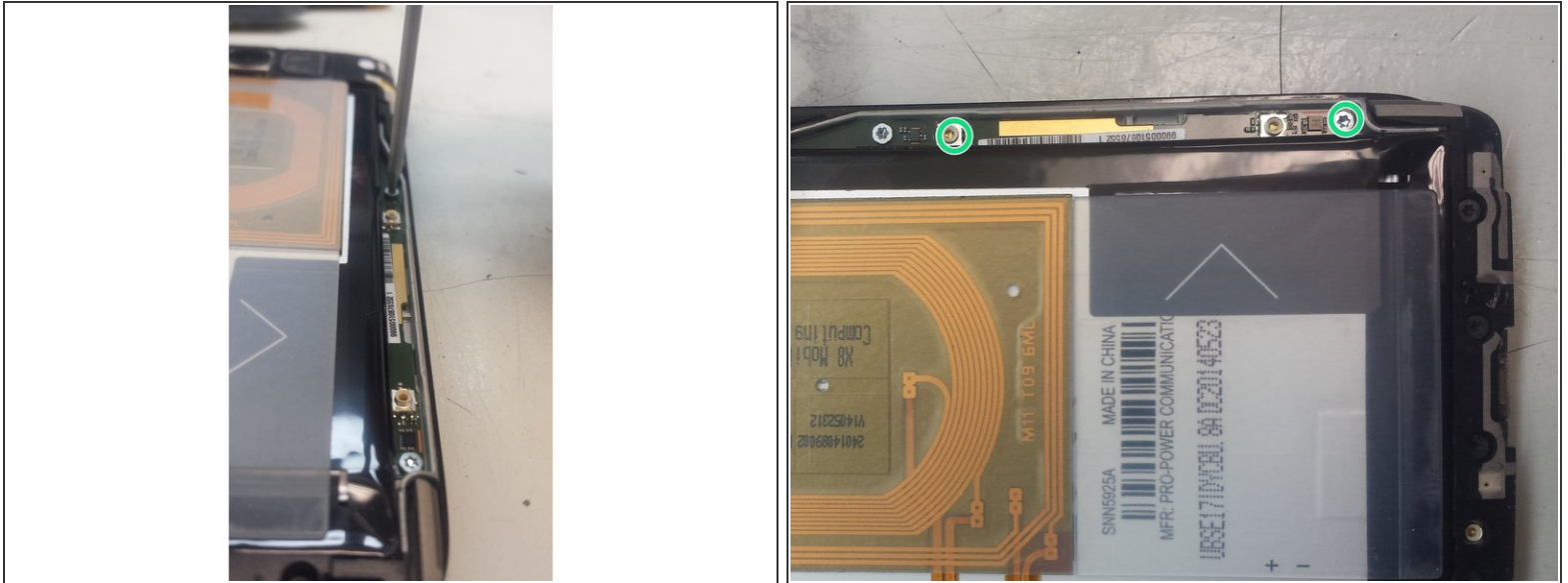
## Step 4



● T5 Torx screws



## Step 5



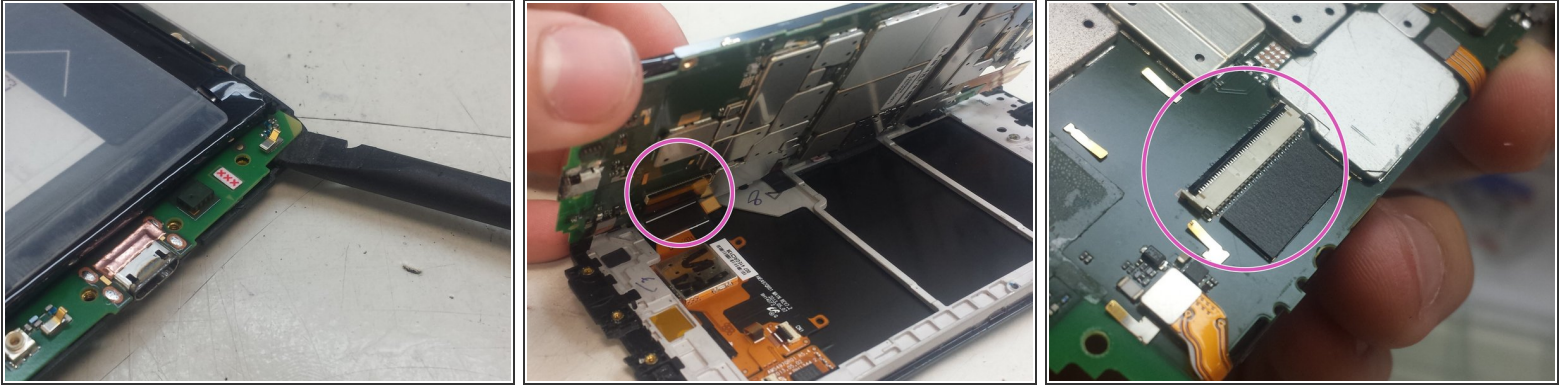
- T5 Torx screws

## Step 6



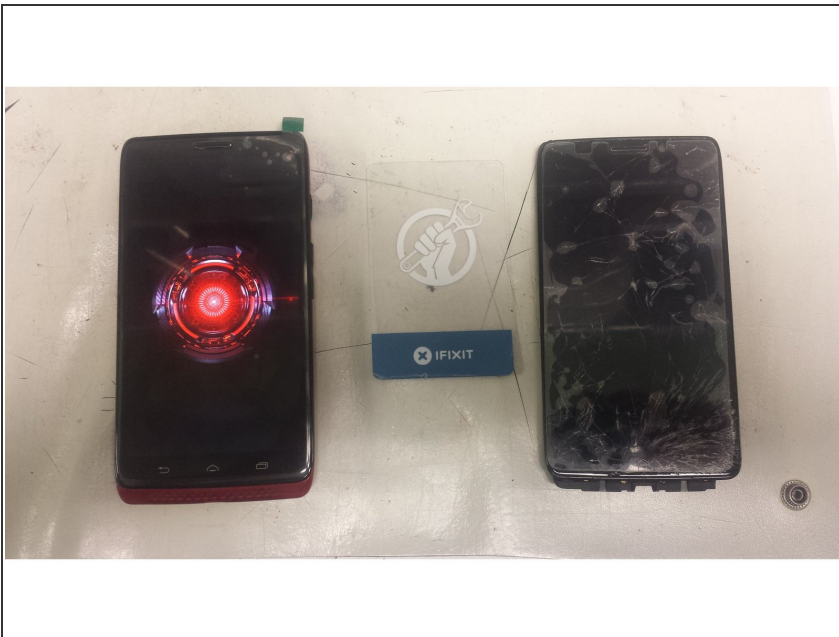
- With the iSesamo tool, or a prying tool, unclip the tabs on the left and right side of the phone.

## Step 7



- Using a Spudger lift the motherboard from **right to left**.
- After lifting the motherboard from the frame remove the tape, and lift the black tab with your Spudger to remove the flex cable.
- ☑ When you place the new screen remember to replace the tape over the flex cable.
- ⚠ Before putting the mother board on remember to transfer your ear speaker from the old frame to the new one.

## Step 8 — And you are done...



- .... as long as you work your way backwards to put it back together.

To reassemble your device, follow these instructions in reverse order.