



Acer Aspire One 722 Screen Replacement

If you need to replace the screen of your netbook due to a crack or dent, follow this guide on how to replace the screen on the Acer Aspire One 722.

Written By: Christian Barboza



INTRODUCTION

If your Acer Aspire One 722 isn't producing clear visuals - distorted, cracked, or dented - use this repair guide to safely replace the screen.

Before using this guide, inspect the screen for debris that may be interfering with the visual quality. Be sure to test the quality of the screen by turning on the device to confirm the screen is faulty and is in need of replacement.

Step 5 requires you to slowly remove the glass casing from the device. Visit your local electronics store that recycles used materials to safely dispose of the faulty screen.

Before beginning, make sure to power off your device completely and disconnect from any external power source.



TOOLS:

- [Essential Electronics Toolkit](#) (1)
-

Step 1 — Battery



- Power down the netbook by pressing the power button on the top left corner.

Step 2



- Close the netbook and flip it over so that the back is facing up.

Step 3



- Slide the button below the battery to the right while simultaneously pulling the battery out.

Step 4



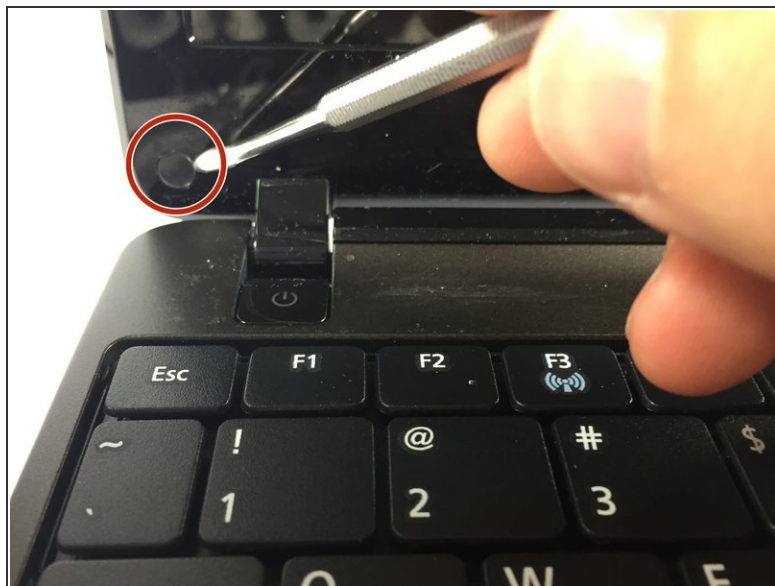
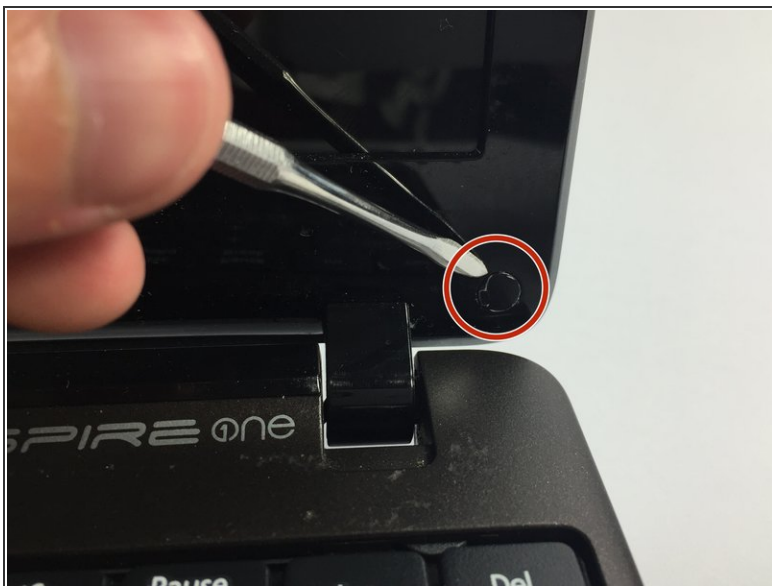
- If necessary, remove the old battery and replace it with a new one.

Step 5



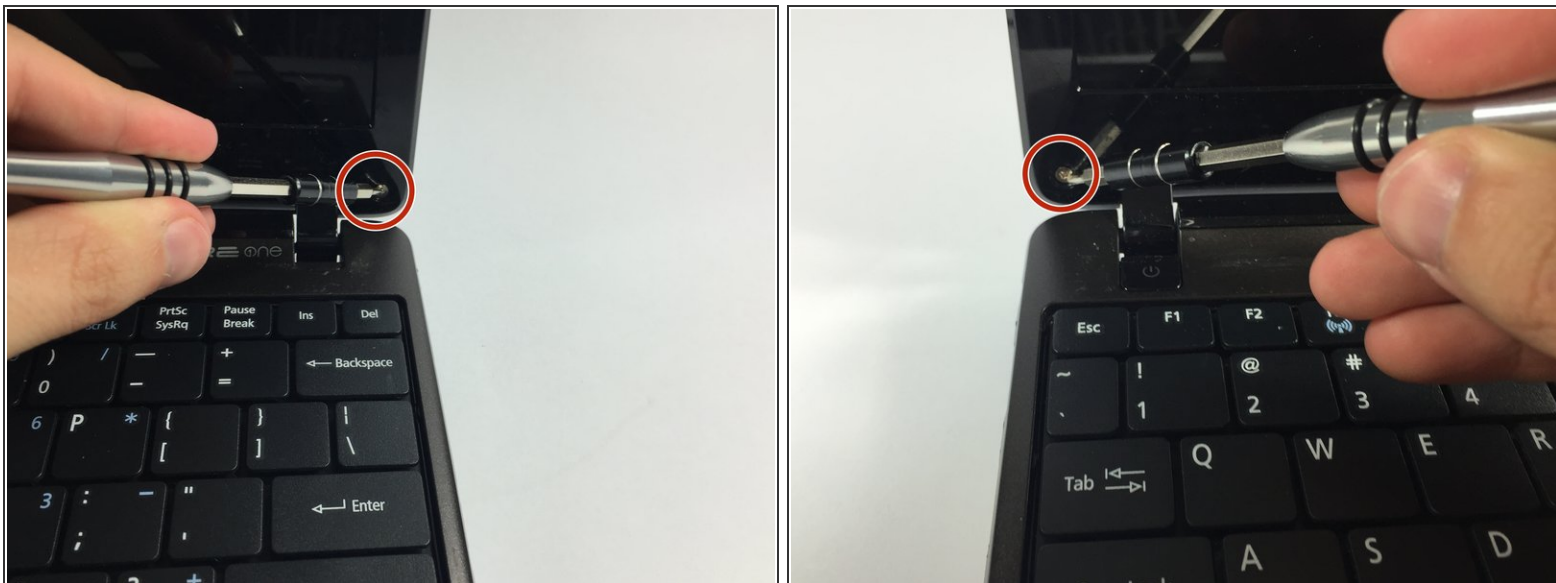
- ★ Check the thin grooves on the side of the battery entry and line the replacement battery up to the grooves.

Step 6 — Screen



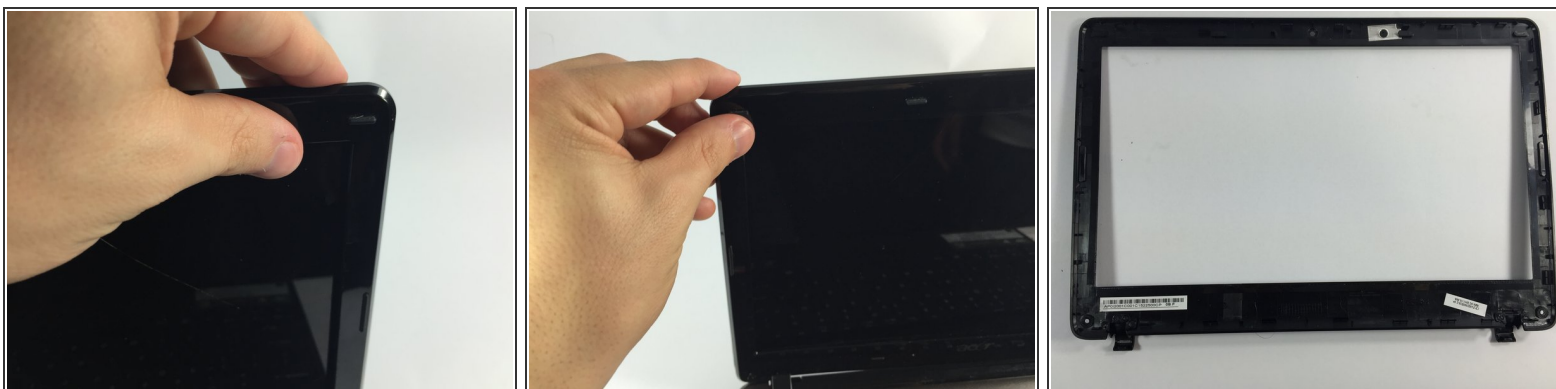
- Remove the black rubber clips from the bottom right and left of the netbook screen.

Step 7



- Remove the screws under the black caps.

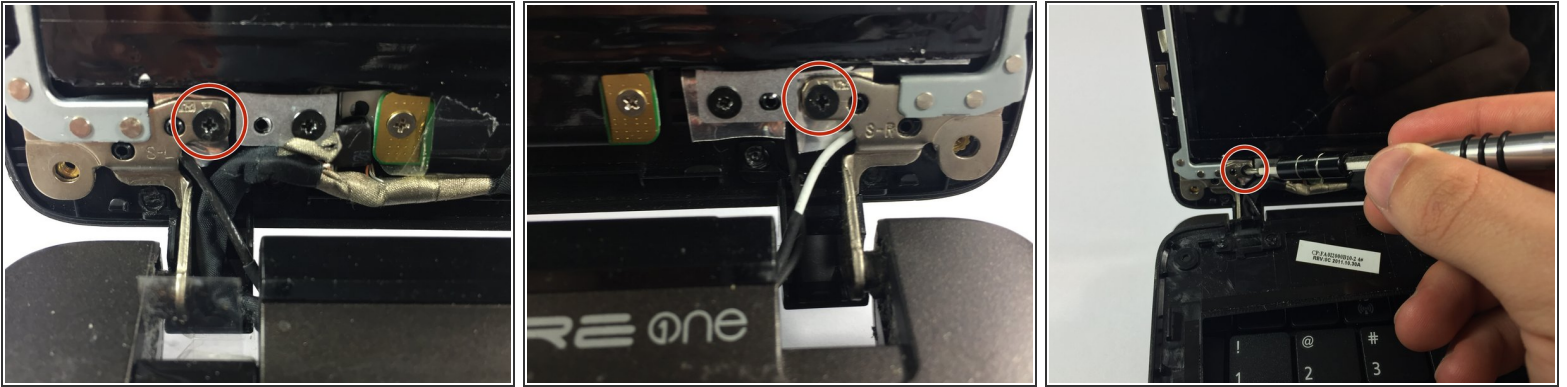
Step 8



- Slowly separate the screen casing from the screen.

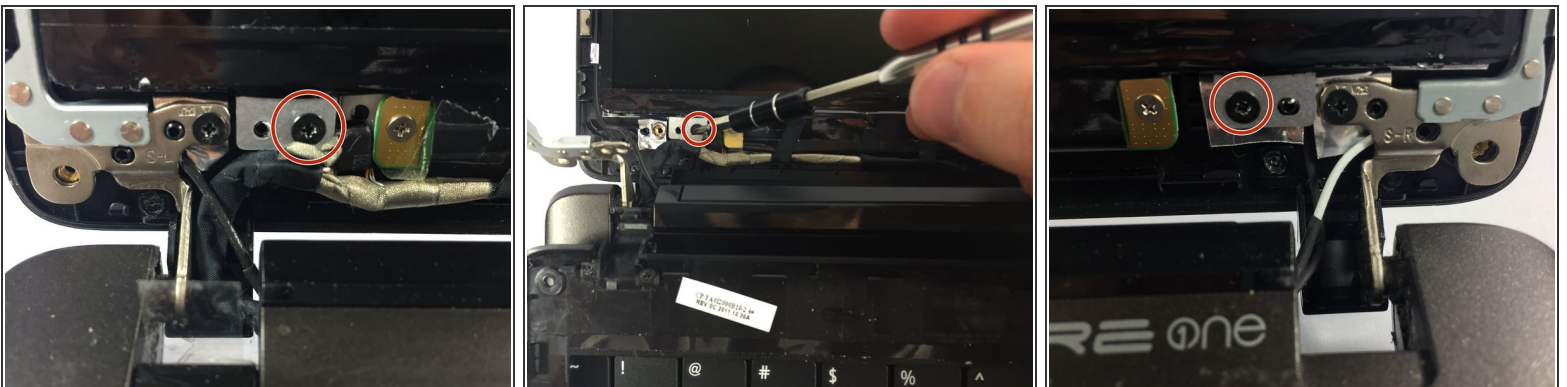
⚠ Potential for device damage: Be careful when detaching the screen casing from the screen. If not done slowly, it can break.

Step 9



- Remove the screws located on the four corners of the screen.

Step 10



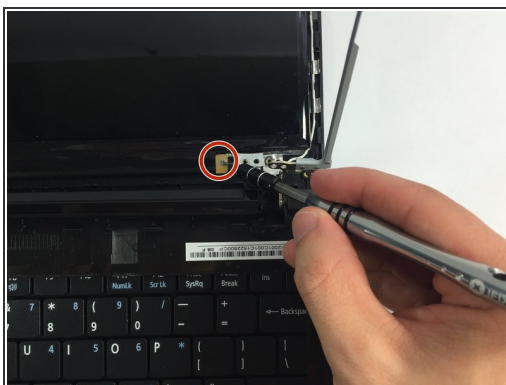
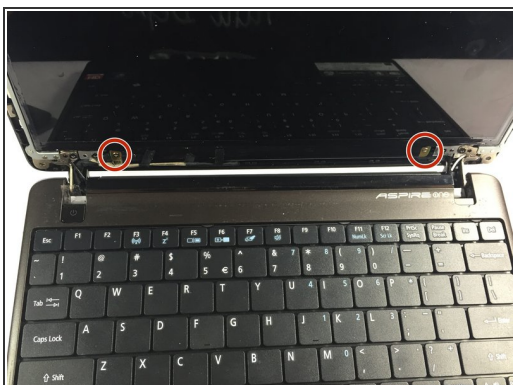
- Remove the two bottom screws.
- ⓘ Taking out these screws will allow you to remove the screen from its attachment.

Step 11



- On the bottom left of the screen there is a cord attached. Remove the tape that is attached to the screen.

Step 12



- On the green board, remove the two screws.
- Remove the board.

To reassemble your device, follow these instructions in reverse order.