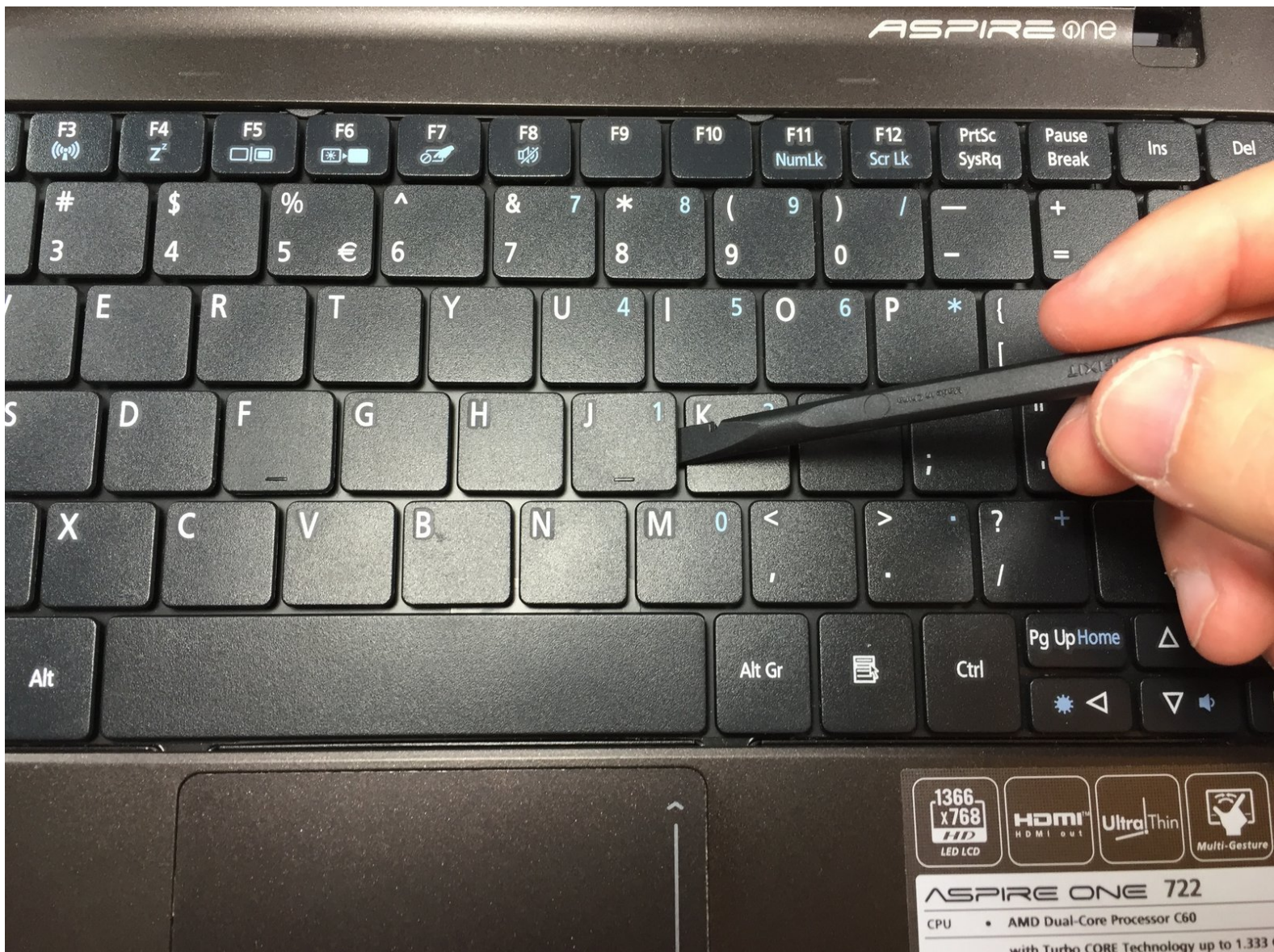




# Acer Aspire One 722 Keyboard Keys and Battery Replacement

A guide on how to replace the keyboard keys on the Acer Aspire One 722.

Written By: Christian Barboza



## INTRODUCTION

This guide will show you how to replace your Acer Aspire One 772 keyboard keys and battery, if necessary. Following the steps below will allow you to replace any damaged or broken keys on your netbook.

Before you begin:

- Please note that a battery replacement is not required in order to replace your keyboard keys.
- You will need to purchase new keys if the keys OR pivoting pieces beneath the key are replacing are broken.
- Steps 2-5 will help you replace your battery and steps 6-10 will help you replace the keys.
- Please remember to completely shut down your netbook before any of the following replacements.



### TOOLS:

- [Spudger](#) (1)



### PARTS:

- [Acer Aspire One 772 Battery](#) (1)
- [Acer Aspire One 772 Keyboard Keys](#) (1)



## Step 1 — Battery



- Power down the netbook by pressing the power button on the top left corner.

## Step 2



- Close the netbook and flip it over so that the back is facing up.

### Step 3



- Slide the button below the battery to the right while simultaneously pulling the battery out.

### Step 4



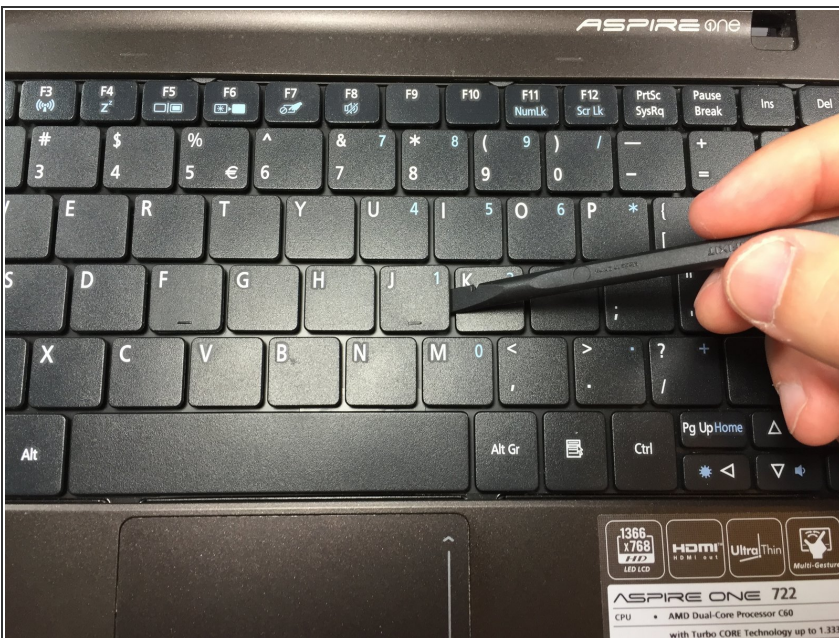
- If necessary, remove the old battery and replace it with a new one.

## Step 5



- ✦ Check the thin grooves on the side of the battery entry and line the replacement battery up to the grooves.

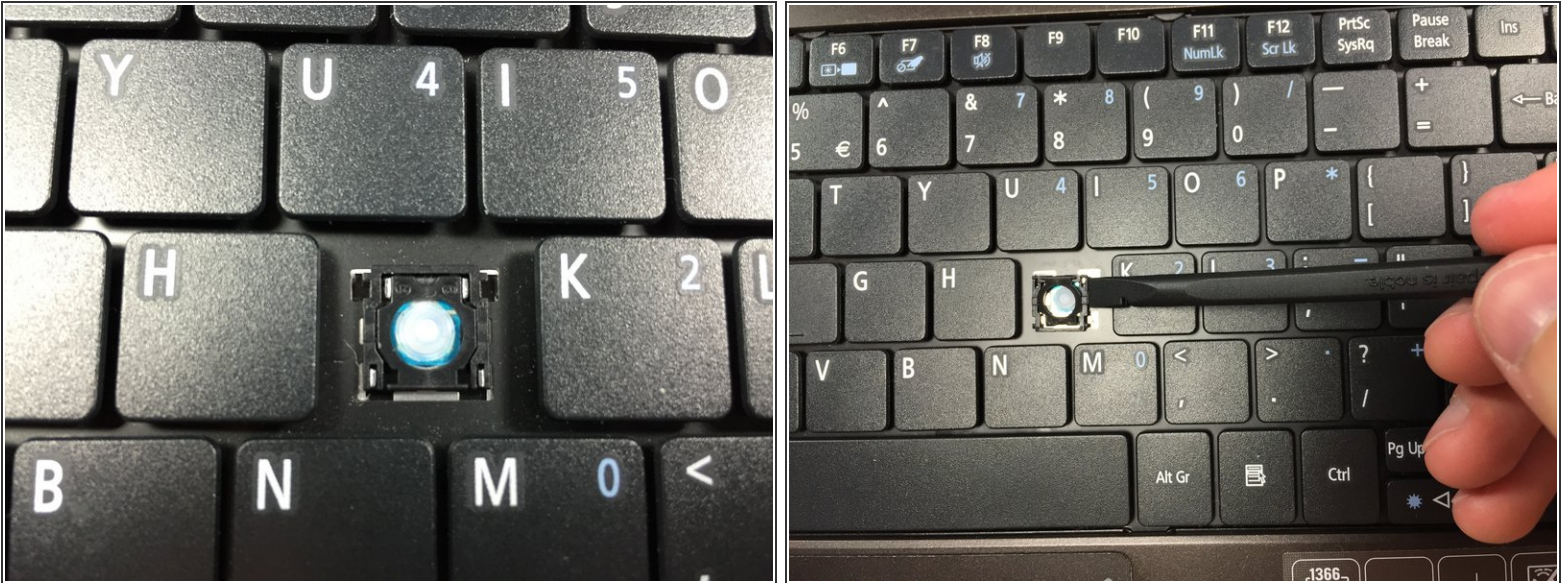
## Step 6 — Keyboard Keys and Battery



- Use the flat end of a spudger to pry off the keyboard key.
- ⓘ If the key is broken, just remove the broken key and press a new key down over the empty key area. If you need to repair the key, follow the steps below.

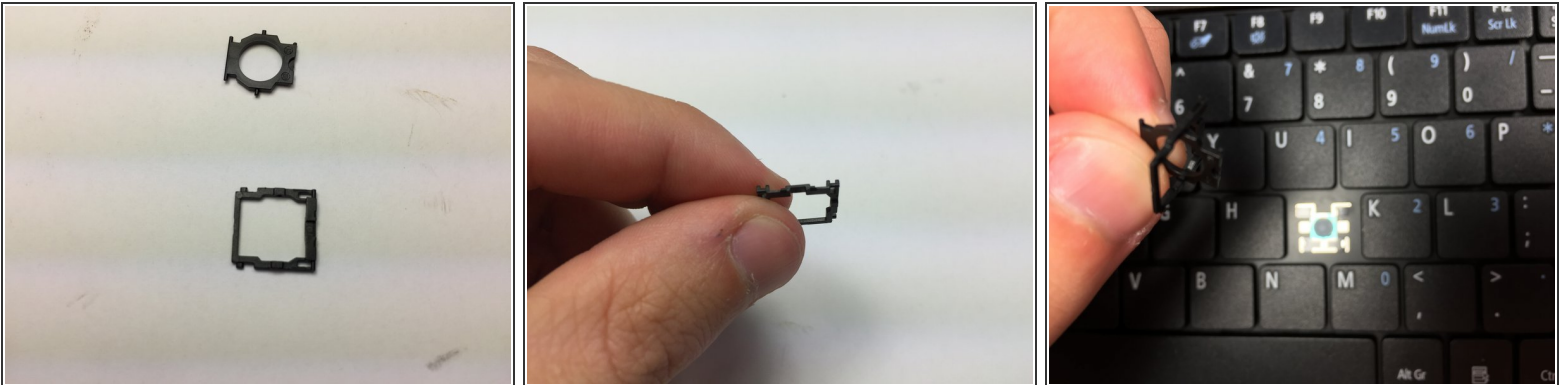


## Step 7



- Use a spudger to pry the upper portion on both sides of the mechanism until it pops off from the key socket.

## Step 8



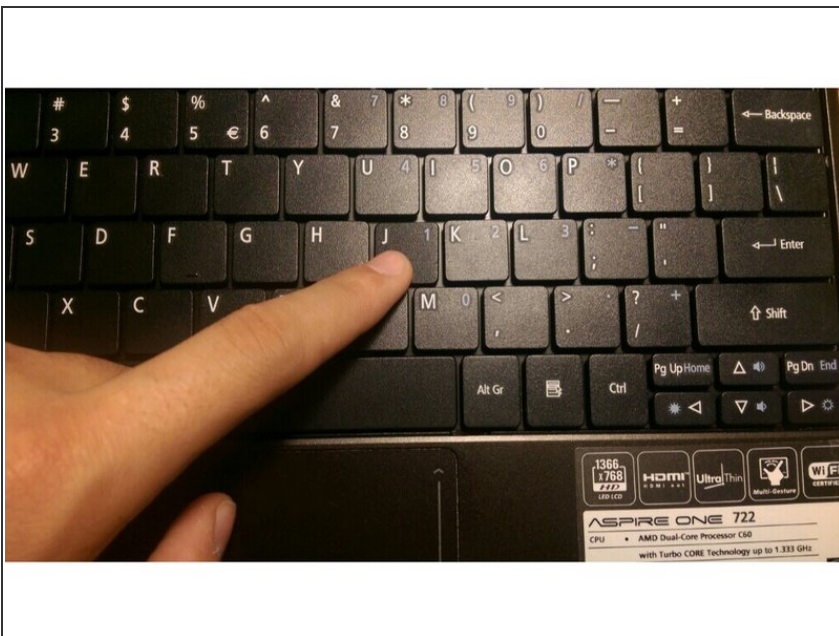
- Take both pivoting pieces of the mechanism and put them together.
  - The smaller piece fits through the inner part of the larger piece and lays in the groove of the larger piece.
- i** Once assembled, it should be entirely flat.

## Step 9



- Position the pivoting smaller piece of the key mechanism in the lower hooks of the key socket.
- Slide your finger across the upper portion of the key mechanism so that it locks in place with the upper hooks of the key socket.

## Step 10



- Place the key on top of the empty key space and press it down firmly until the key locks in place.

To reassemble your device, follow these instructions in reverse order.