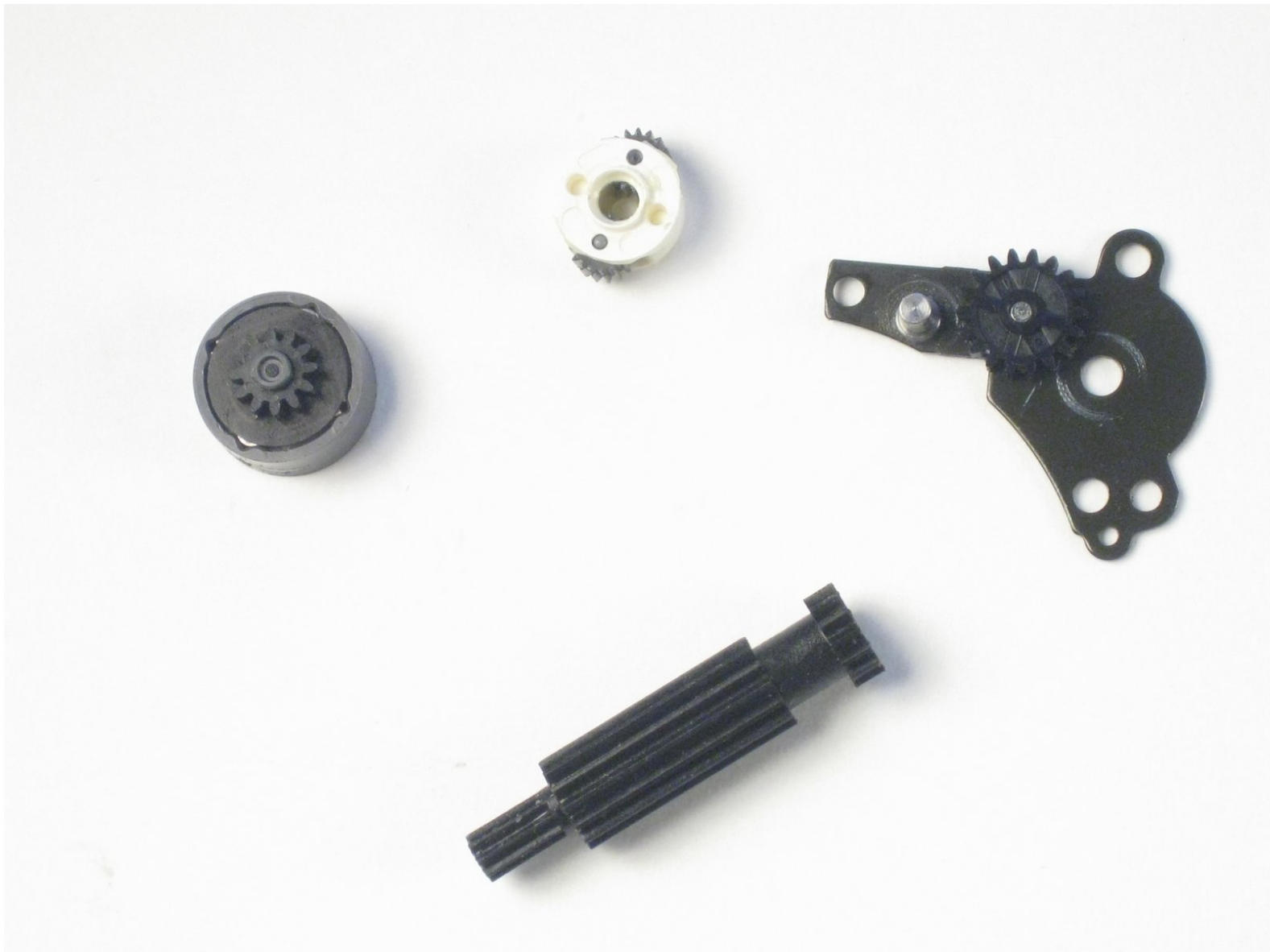




Leica Z2X Lens Motor Replacement

A guide on how to install a new zoom motor in a Leica Z2X

Written By: Zachary





TOOLS:

- [.8 inch Screwdriver](#) (1)
-

Step 1 — Remove the Bottom Screws



- Carefully unscrew the four Phillips #0 screws on the bottom of the camera.
- ⓘ There is a screw located inside of the tripod hole (large circle.) Make sure the screw is removed from there too!

Step 2 — Open the Back Door



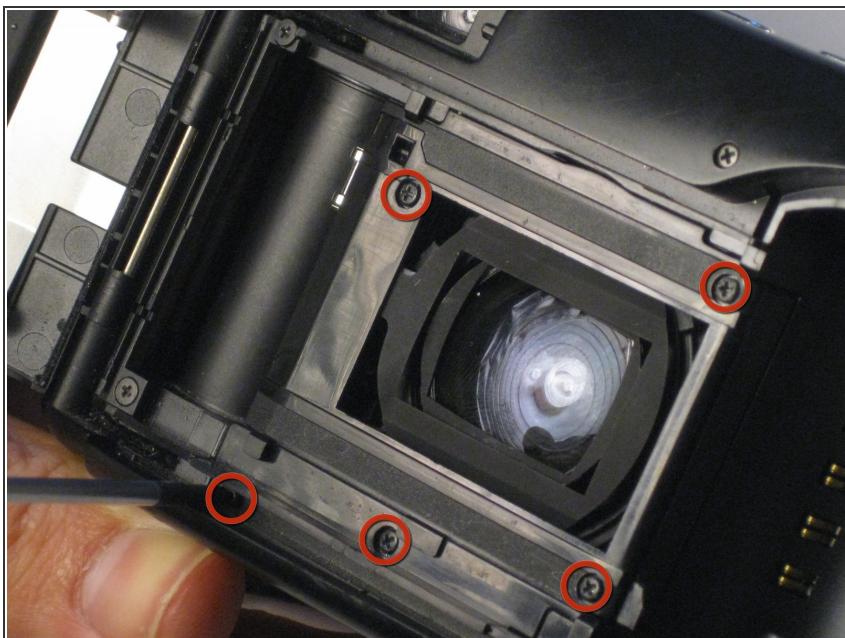
- Open the back door on the camera by pushing down on the door latch.

Step 3 — Remove the Bottom Plate



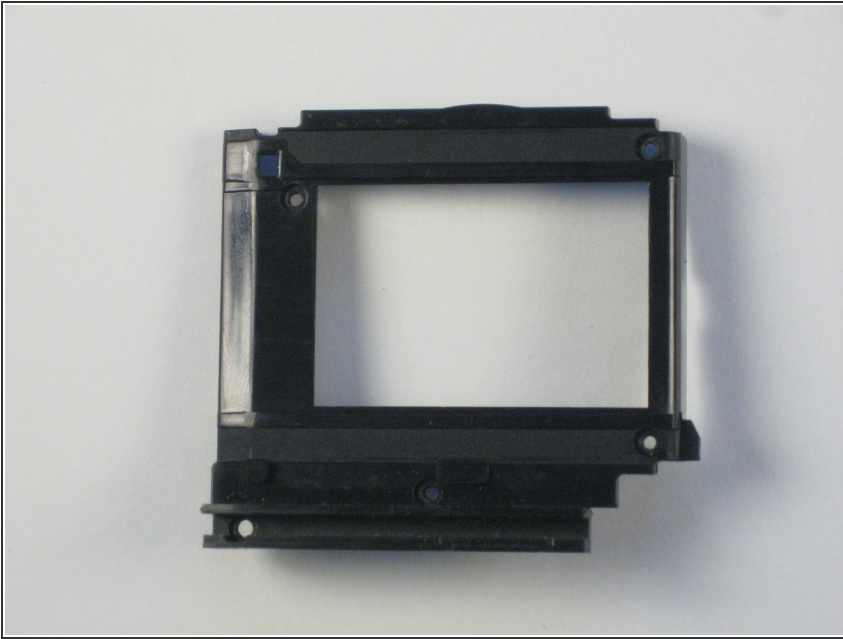
- Apply pressure to the bottom plate and it will pop off.
- From here, you can replace the bottom plate, or continue on to further steps.

Step 4 — Lens Motor



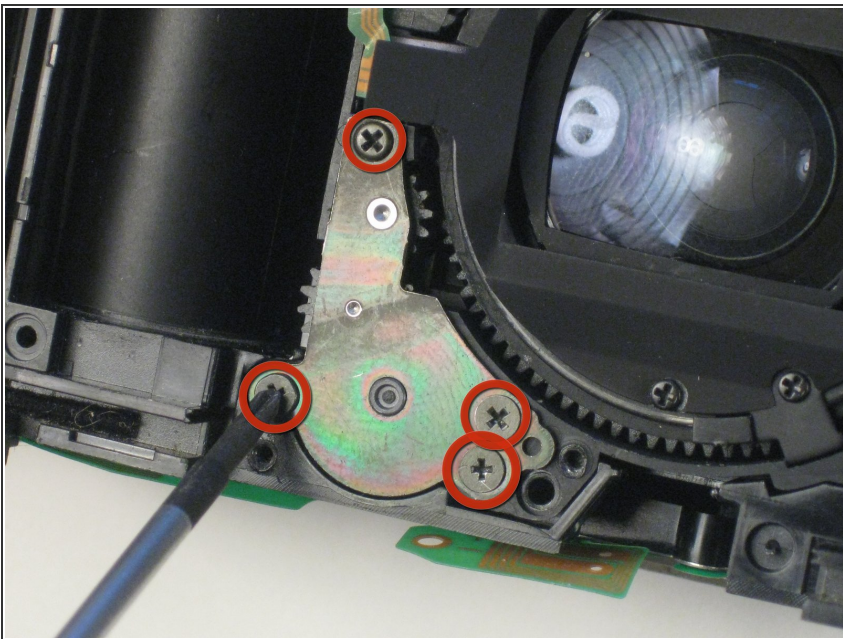
- Having opened the camera and removed the bottom plate, unscrew the five screws marked in the picture.
- The screw marked in blue is a tiny bit harder to find because it's in a crevice. Don't miss it!

Step 5



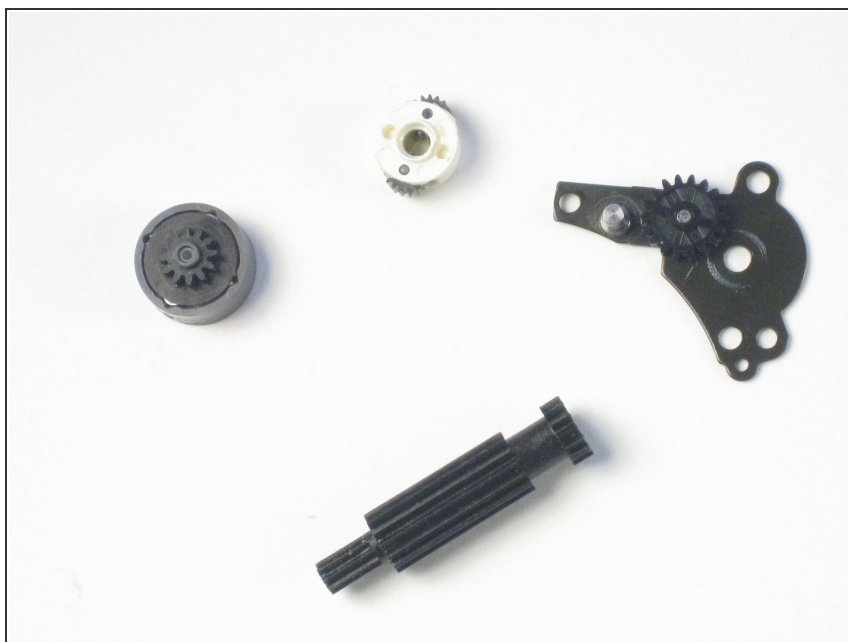
- Apply pressure until the piece you unscrewed in the last step pops off.

Step 6



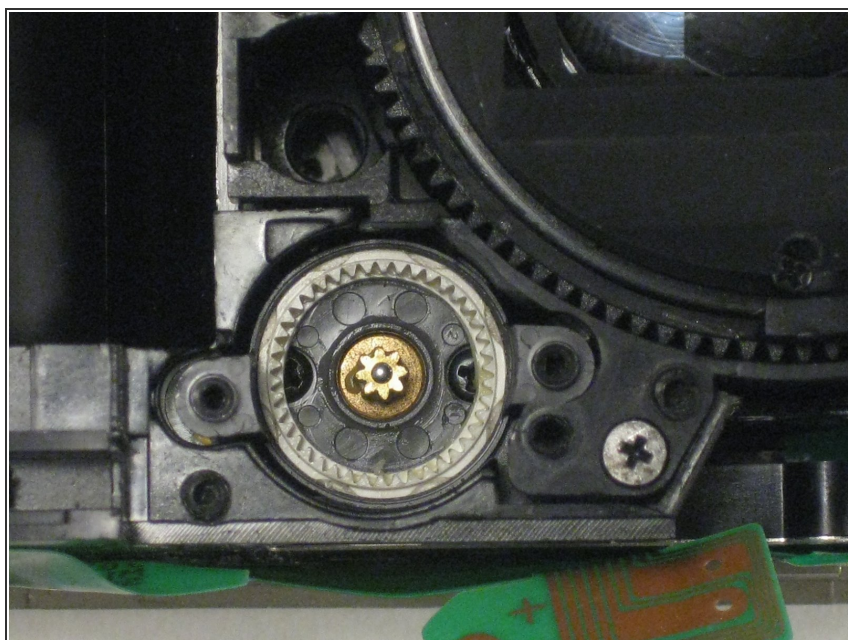
- Unscrew the four screws on the back of this piece to the lower-left corner of the lens.

Step 7



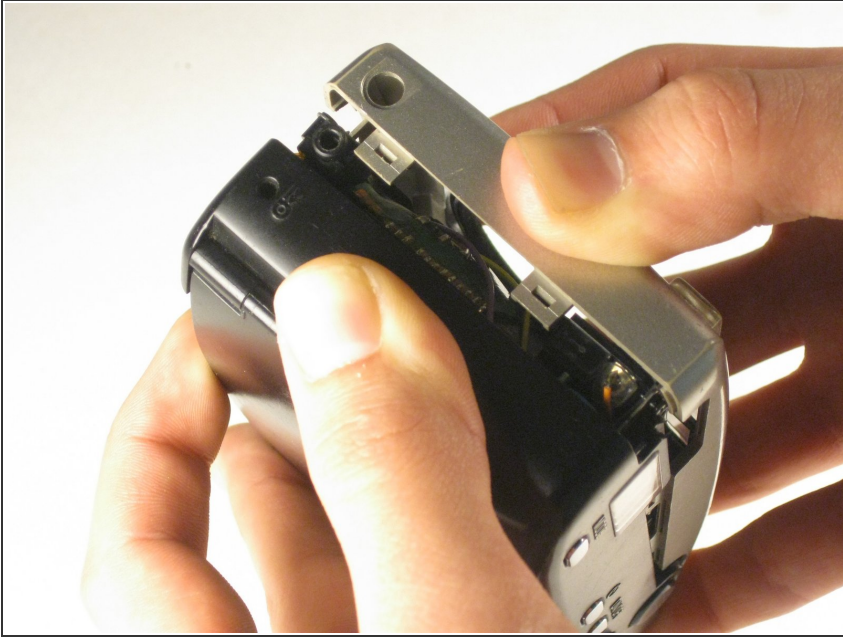
- Removing the lens motor cover, you should be left with these four pieces.

Step 8



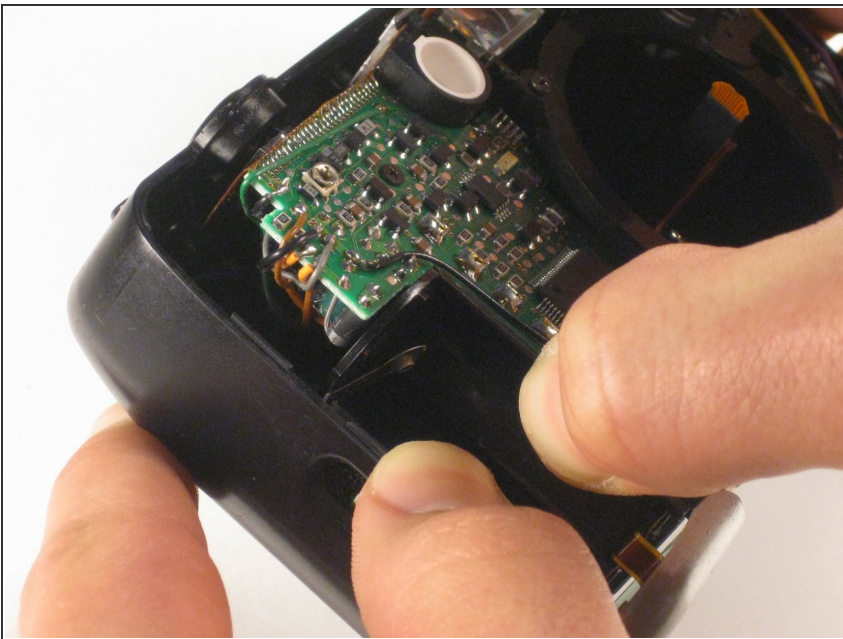
- Located underneath these four pieces is the lens motor.

Step 9



- Now that you've removed the bottom plate, you can pull apart the front and back covers.
- Start with the front cover and, by applying pressure (perhaps a lot of pressure), snap off the front cover.

Step 10



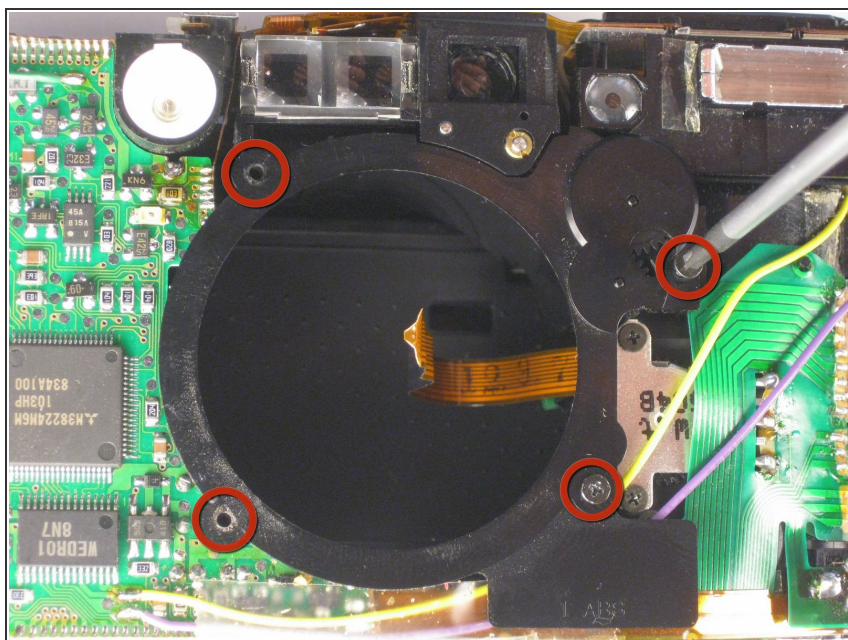
- Next, the back cover.
 - Apply pressure to remove the back plate.
- ⚠ Be careful of the buttons on the top of the camera falling off, they are small parts and CAN get lost easily.
- The best way to remove the back is to stick your thumbs on either side of the battery socket and separate from there.

Step 11



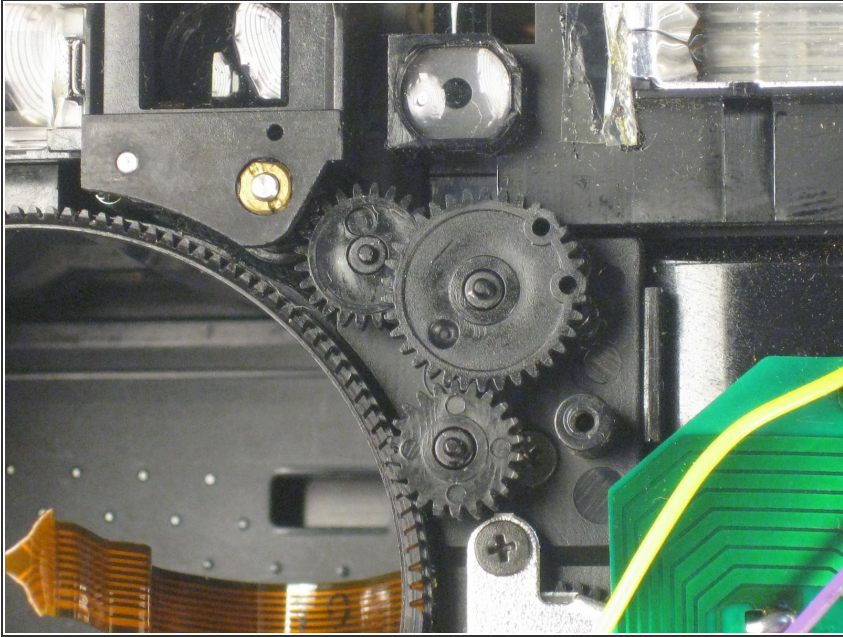
- You should now have removed the front and back plates.

Step 12



- Remove the four screws holding on the front panel surrounding the lens.

Step 13



- Remove the three gears under the panel you removed in the last step and the lens motor should be able to be removed.

To reassemble your device, follow these instructions in reverse order.