



# Garmin Nuvi 2797LMT Motherboard Replacement

The motherboard has several circuits that are connected together to make the GPS work. It's important to have this part fully functional at all times.

Written By: Isaias Silva



---

## INTRODUCTION

Here are a few easy steps on how to correctly remove the motherboard so a new one can be installed.

---




### TOOLS:

- [T6 Torx Screwdriver](#) (1)
  - [iFixit Opening Tools](#) (1)
  - [T4 Torx Screwdriver](#) (1)
-


## Step 1 — Motherboard



-  Before you begin make sure to turn off your GPS.
- Using your T-6 Torx Screwdriver, unscrew the ten 2.38 mm torx T-6 screws from the back of your GPS.

## Step 2



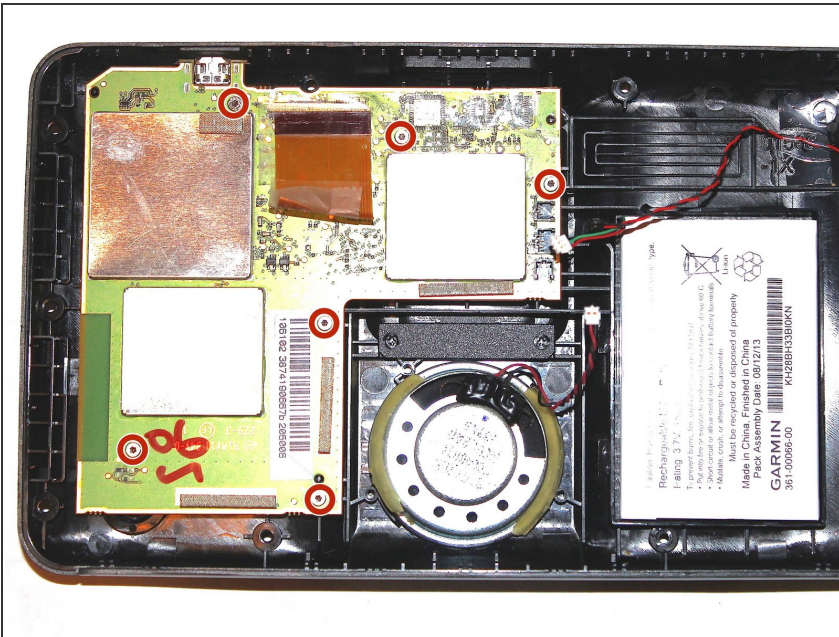
- Using the biggest plastic opening tool, pry open the GPS from the sides. You should now be able to see everything inside the GPS.
-  Be careful when opening the GPS because of the ribbon attached to the screen. It can tear easily.

## Step 3



- With the device opened, carefully remove the ribbon from the motherboard.
- Unplug the three wire connectors from the motherboard.

## Step 4



- Using your T-4 Torx Screwdriver, unscrew six 1.58 mm T-4 Torx screws from the motherboard.



## Step 5



- Now remove the motherboard out of the device. You will have two separate pieces.

To reassemble your device, follow these instructions in reverse order.