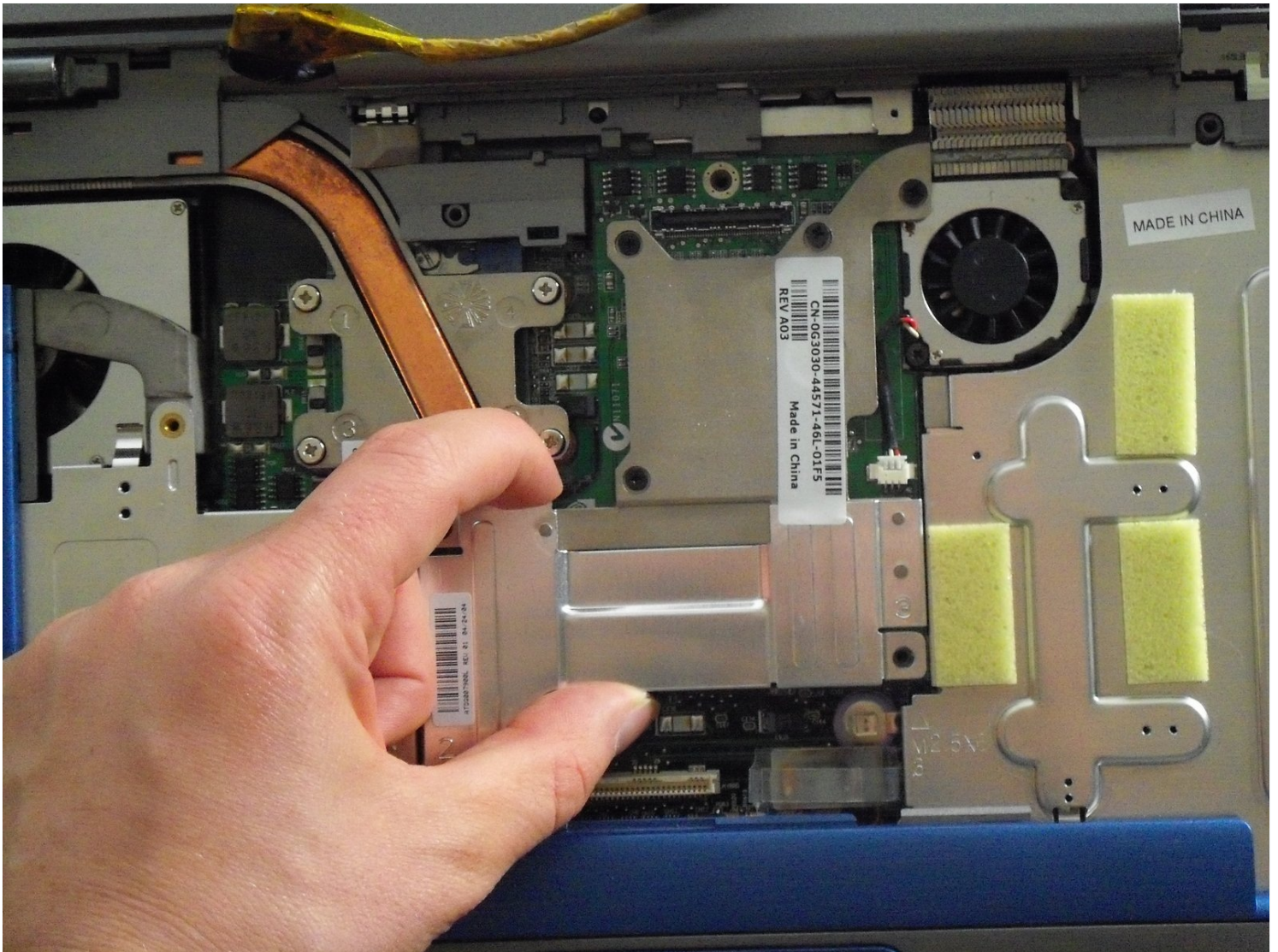




Dell Inspiron 8600 Video Card Replacement

If the LCD screen is not working, it may be a...

Written By: Brian Murphy



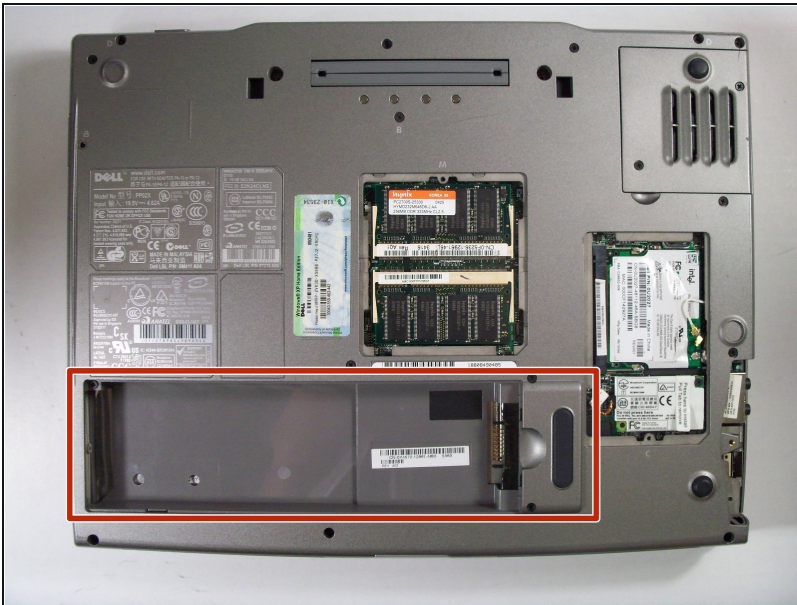
INTRODUCTION

If the LCD screen is not working, it may be a problem with the video card.


TOOLS:

Phillips #1 Screwdriver (1)

Step 1 — Battery



- Remove the battery from the bottom left of the laptop as shown.

 **Remove the battery before operating on the computer to avoid electrocution.**

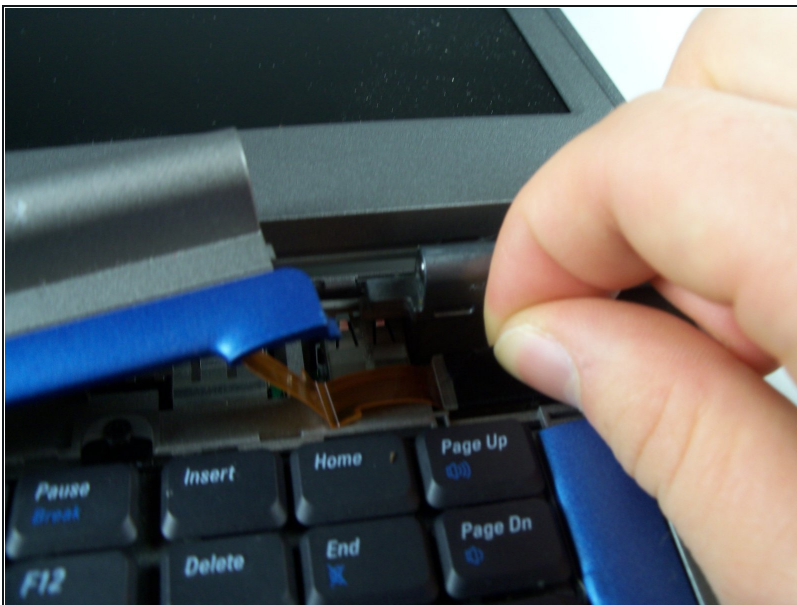
Step 2 — Hinge Cover



- Insert a spudger into the notch at the far left side of the top blue panel and pry the hinge cover off.
- You may need to pry the other side off as well. You can do this by inserting the spudger between the hinge and the top cover.

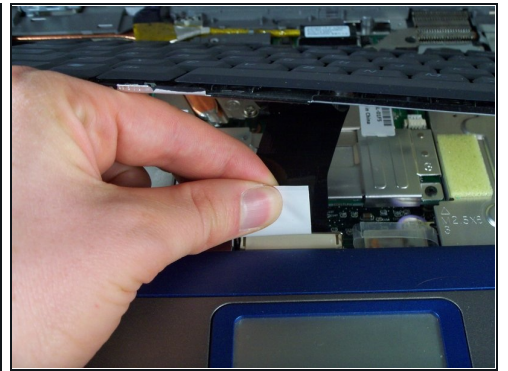
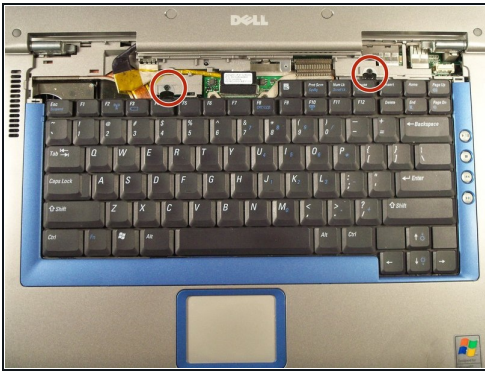
⚠ Be careful of the wire attached to the underside of the hinge cover.

Step 3



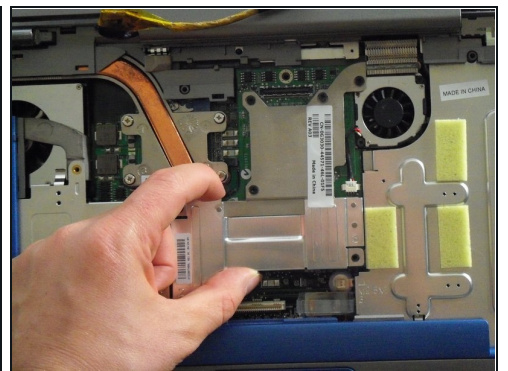
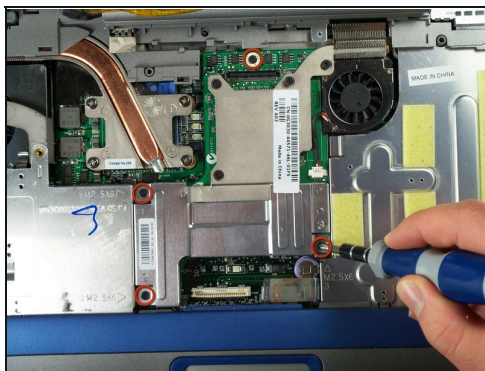
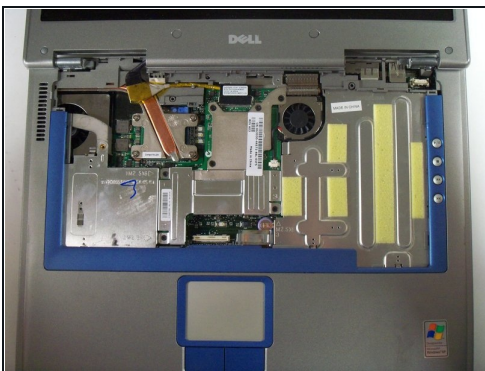
- Pull the small black tab on the right hand side of the laptop.
- You have now removed the hinge cover.

Step 4 — Keyboard



- Using the Phillips #1 remove the screws at the top of the keyboard as indicated.
- ⓘ Do not just lift up. There is a tab underneath the keyboard that is still connected to the mother board.
- You will need to pull out the white tab underneath the keyboard upwards until it pops out of its socket.
- ⓘ The keyboard should be easily removable at this point.

Step 5 — Video Card



- After removing the keyboard, locate and remove the labeled screws.
- Gently lift the Video Card unit for replacing.

To reassemble your device, follow these instructions in reverse order.