



Asus X555LA-SI305041 CD Drive Replacement

This guide will help you replace the CD Drive in this device. You may need to replace the CD Drive if you want a better drive, or your current one is not working properly.

Written By: Alex Turner



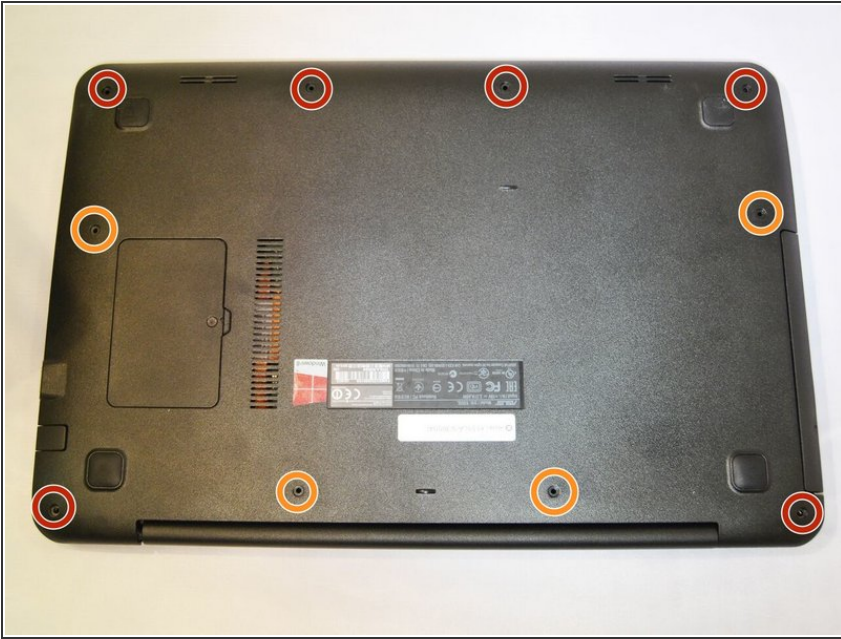
INTRODUCTION

You may need to replace the CD Drive if it is not working, or if you want a more advanced CD Drive. This is a fairly easy replacement, and there is not too much else you need to take off of the device in order to get the CD Drive out. The CD Drive is essentially its own entity, so there will not be any other parts that need to come out with it. There is no easy way to repair a CD Drive itself, so if you have determined that your drive is not working, the best option is going to be to replace the whole thing.

TOOLS:

- [Phillips #0 Screwdriver](#) (1)
 - [iFixit Opening Tool](#) (1)
-

Step 1 — Keyboard Assembly



- Remove the following Phillips #0 screws from the lower case:
 - Six 9 mm screws
 - Four 11 mm screws

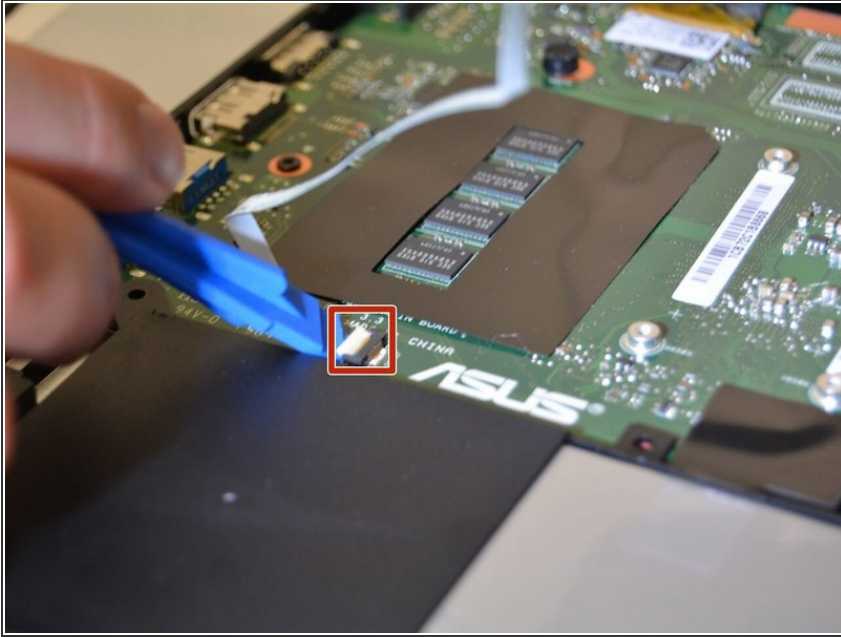
Step 2



- Use the plastic opening tool to separate the top cover from the laptop.
- Start by prying on the front of the laptop.
- Continue prying around the cover and end just under the screen to release the front cover.

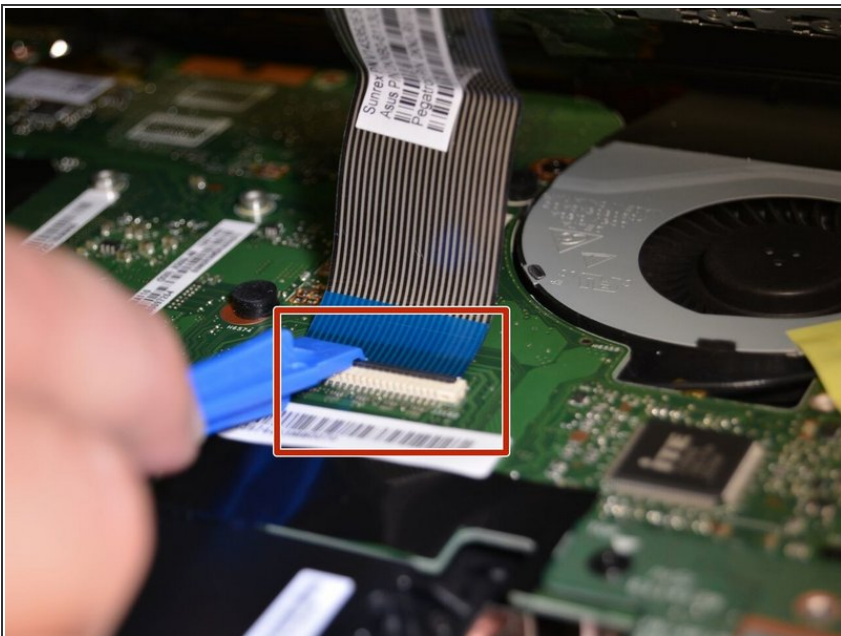
⚠ Do not fully remove the top cover, it is attached by two ribbon cables that will be disconnected in the following steps.

Step 3



- To release the ZIF latch, flip up the small white tab.
- ⓘ The connector may have a white base with a small grey rotating latch.
- Pull the white ribbon cable out of the socket to disconnect it.
- ⓘ Very little force should be required to pull out the cable.

Step 4



- To release the ZIF latch on the keyboard cable, flip the grey rotating tab up.
- Gently pull the black and blue ribbon cable out of its connector.

Step 5



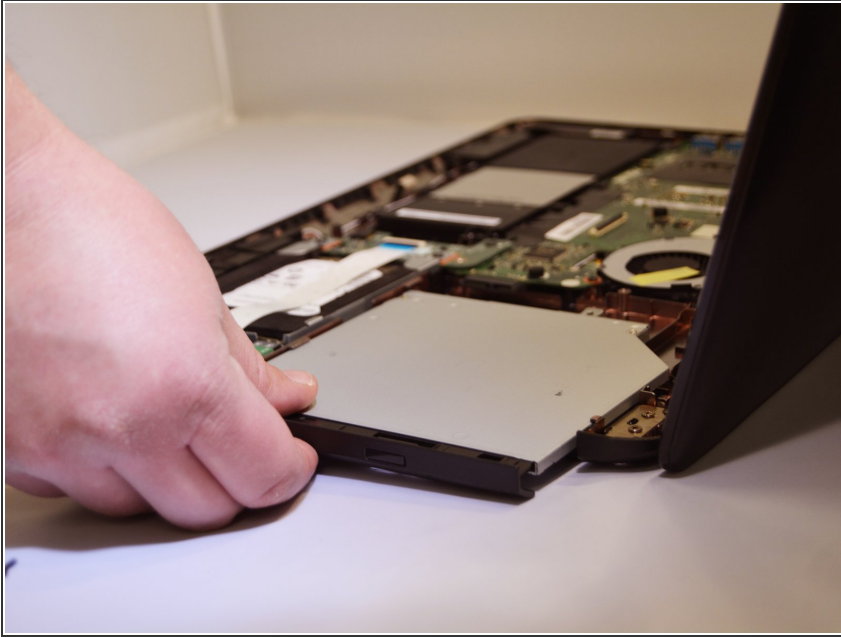
- You can now fully remove the keyboard and front panel to gain access to the inside of the laptop.

Step 6 — CD Drive



- Using a #0 Phillips screw driver, remove the (5mm) black screw to the left of the CD Drive and to the right of the cooling fan.

Step 7



- CD Drive should easily slide out.

To reassemble your device, follow these instructions in reverse order.