



Canon EOS 60D Rear LCD screen protective plastic cover Replacement

Replace your scratched rear LCD screen's protective plastic cover to allow for optimum display and efficiency.

Written By: Nazmi Bargouthi



INTRODUCTION

The rear LCD screen's plastic cover provides protection for the sensitive LCD screen beneath it. If the cover is scratched or damaged, it would obstruct the display of the screen. The replacement of the plastic cover should be handled with care in order to avoid damaging the plastic frame which holds it.



TOOLS:

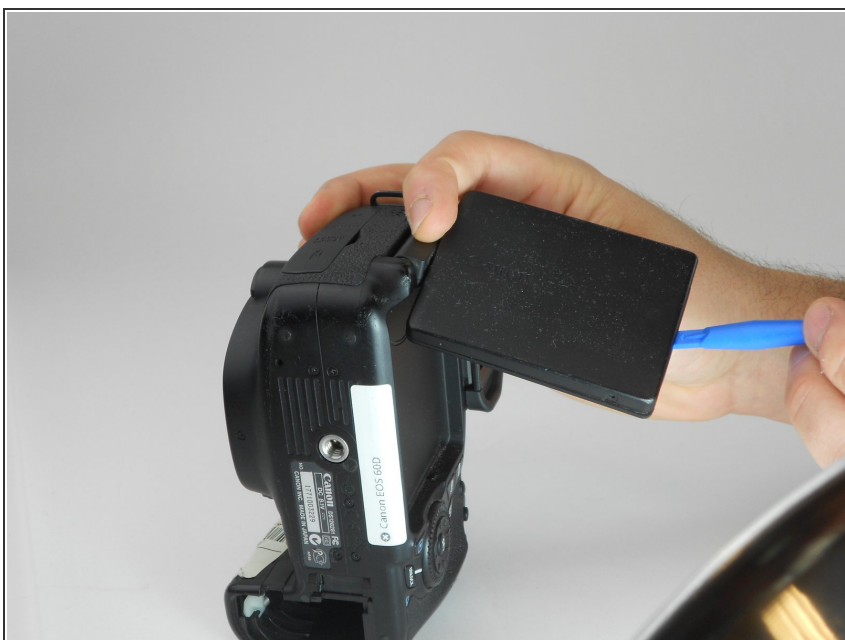
- [iFixit Opening Tools](#) (1)
 - [Precision Tweezers Set](#) (1)
 - [Jimmy](#) (1)
 - [Phillips #00 Screwdriver](#) (1)
-

Step 1 — Rear LCD Screen Dissassembly



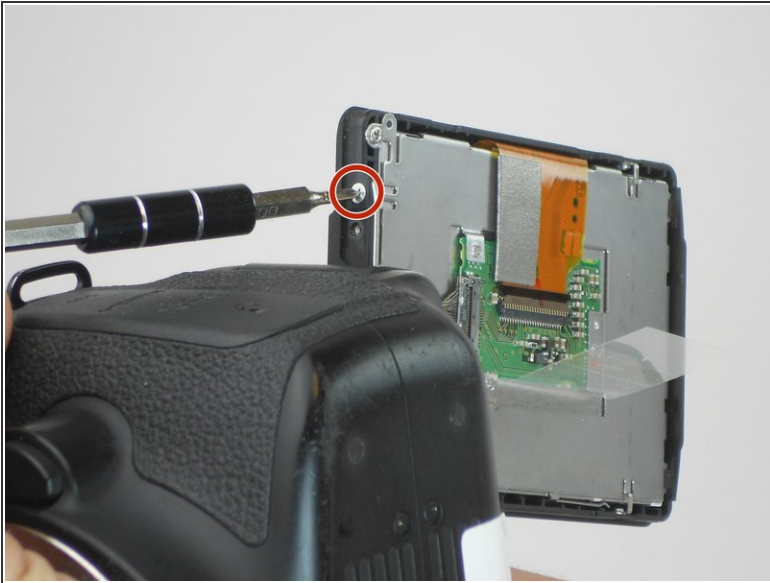
- Take the LCD out of its place to expose the Phillips #PH00 screws.
- Remove the two 2.5 mm Phillips #PH00 black screws on both sides of the LCD screen.
- Next remove the two 3 mm Phillips #PH00 black screws near both sides of the base where the screen swivels.

Step 2



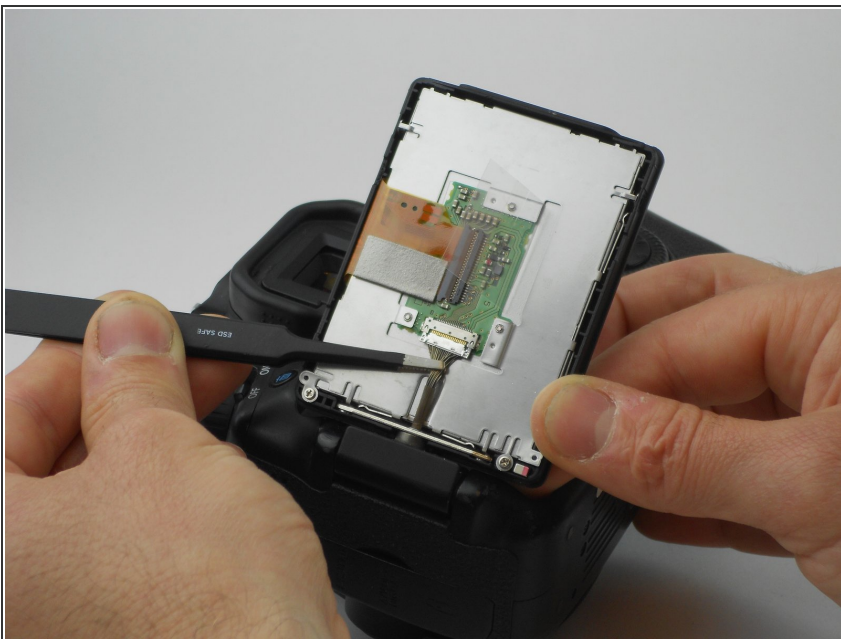
- Using a plastic opening tool, carefully pry off the back cover of the LCD.

Step 3



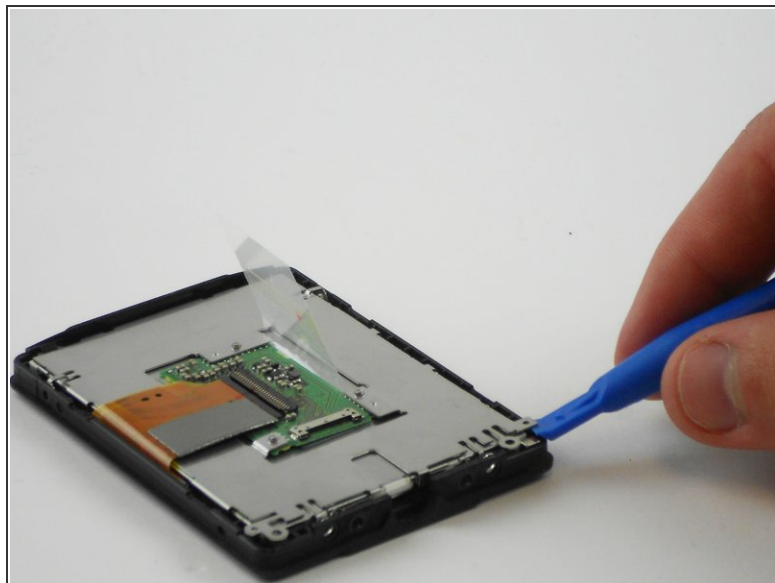
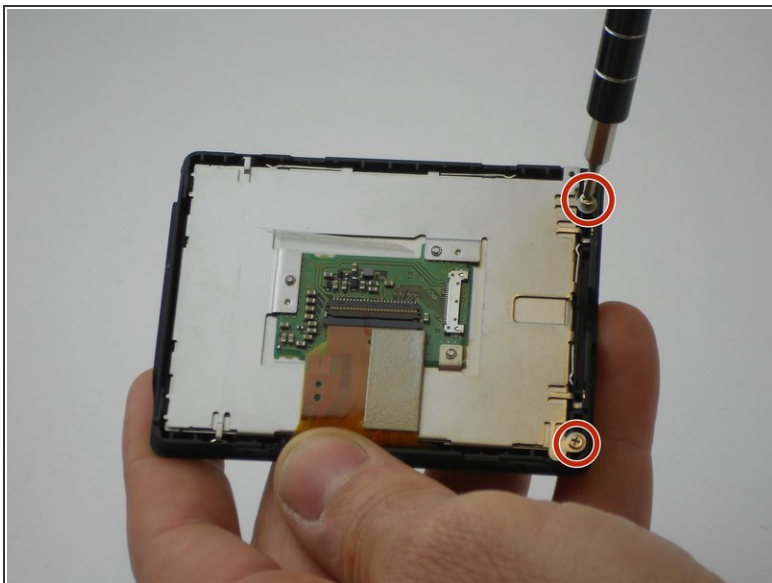
- Remove the 3 mm Phillips #PH00 silver screw on the side of the screen.
- Turn the screen to remove the second 3 mm Phillips #PH00 silver screw.

Step 4



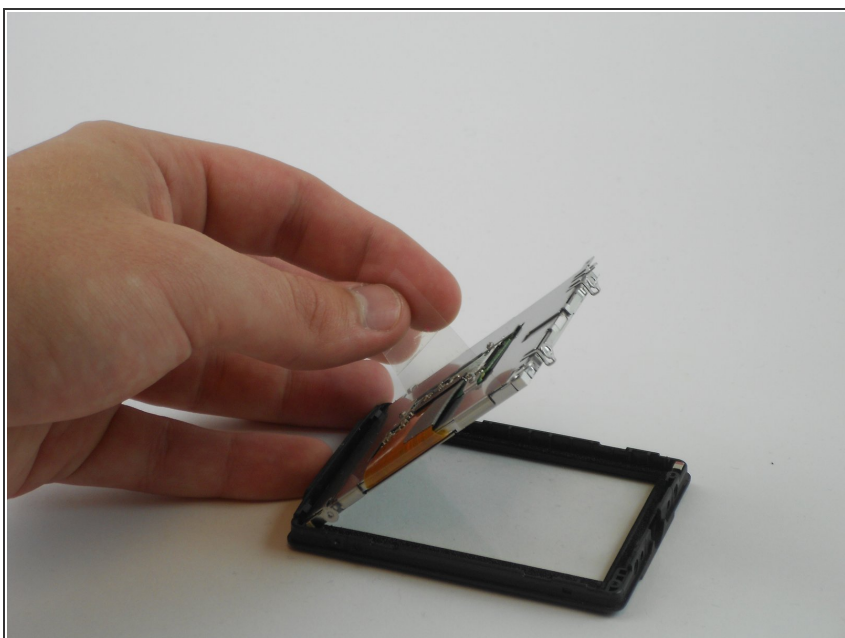
- Using the tweezers, carefully disconnect the rear connector by pulling it away from the screen.

Step 5 — Rear LCD Screen



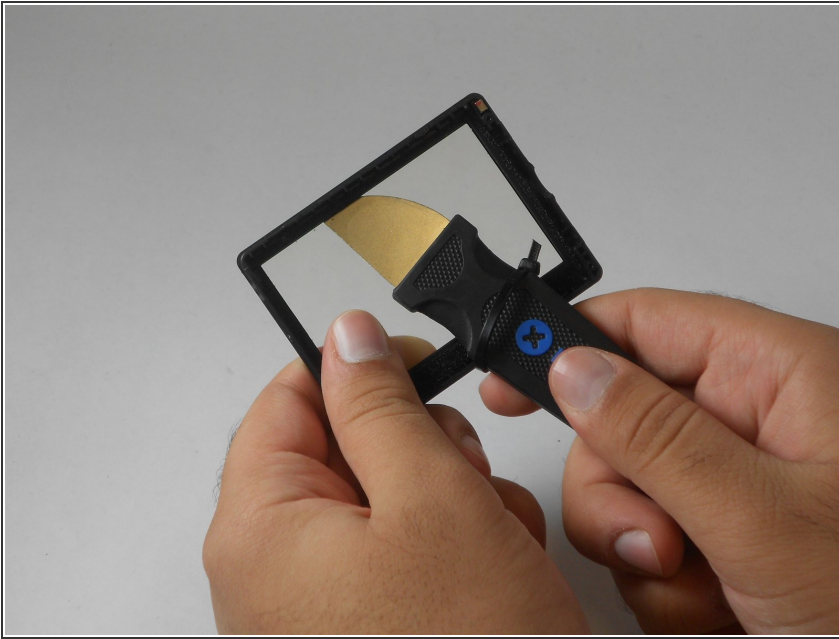
- Remove the two 2.5 mm Phillips #PH00 silver screws using the PH00 screwdriver.
- Using the plastic Spudger opening tool, carefully lift up on the metal tabs next to where the screws were located.

Step 6




- Finally, remove the LCD screen by grabbing the clear plastic tab and lifting it carefully.

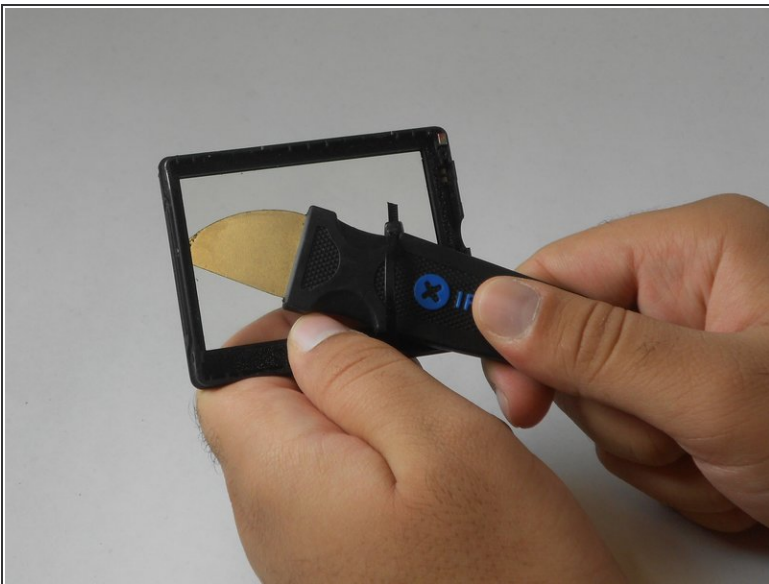
Step 7 — Rear LCD screen protective plastic cover



- Slowly insert the tip of the Jimmy between the damaged plastic cover and the plastic frame, which holds it, to loosen the connection between them.

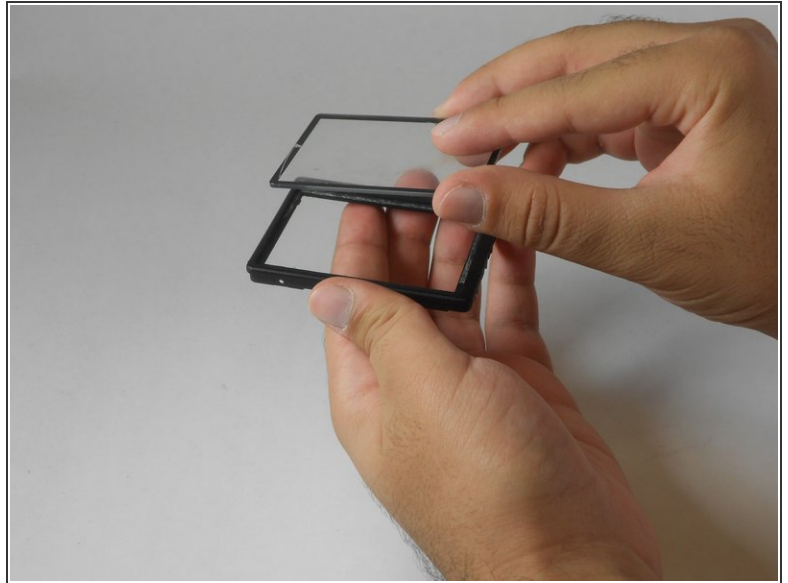
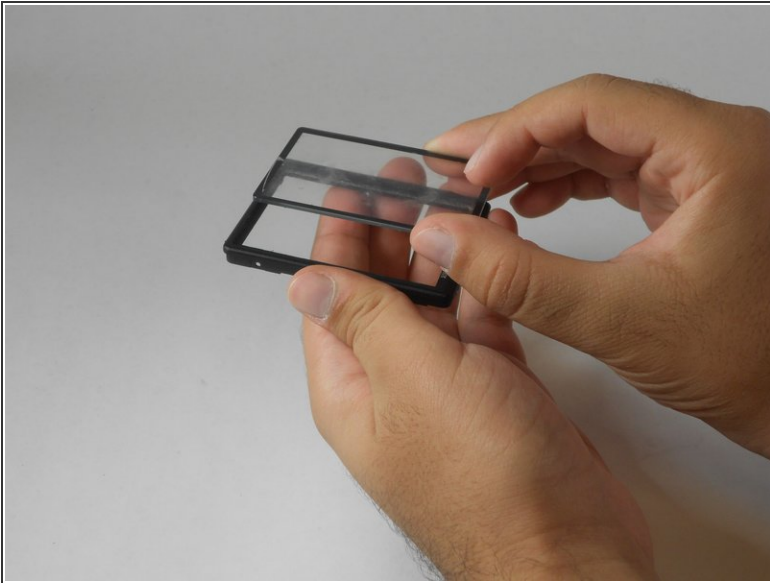
 The Jimmy is sharp, so take special care when using it to avoid damaging the plastic frame or causing personal injury.

Step 8



- Carefully slide the Jimmy through all corners of the plastic frame until it is detached from the plastic cover.

Step 9



- Using your hand, lift the detached plastic cover off the plastic frame.
- To place a new plastic cover, simply stick it to the frame in the appropriate position.

To reassemble your device, follow these instructions in reverse order.