



# Zoomer Dino Boomer Nose Sensor Replacement

Before removing and replacing the sensor of...

Written By: Lauren Mannix



# INTRODUCTION

Before removing and replacing the sensor of Zoomer Dino Boomer, check the [Troubleshooting Page](#) to make sure the issue with gesture mode cannot be fixed without removing the sensor.

---

## TOOLS:

Phillips #0 Screwdriver (1)

Spudger (1)

Soldering Iron (1)

Lead-Free Solder (1)

Soldering Tweezers (1)

---

## Step 1 — Nose Sensor



- Unscrew the two 7.5 mm Phillips #0 screws at the base of the neck.
- Remove the two 7.2 mm Phillips #0 screws above these at the base of the mouth.

## Step 2



- Use the spudger to pry Zoomer Dino Boomer's lower jaw from its mouth.

## Step 3



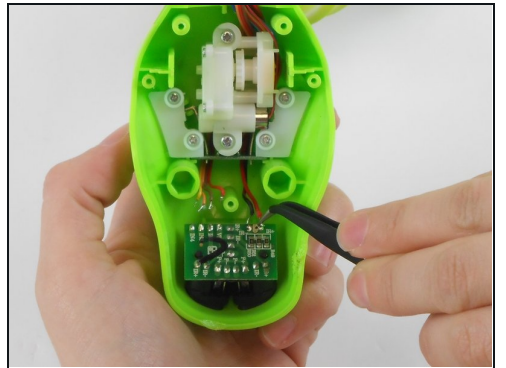
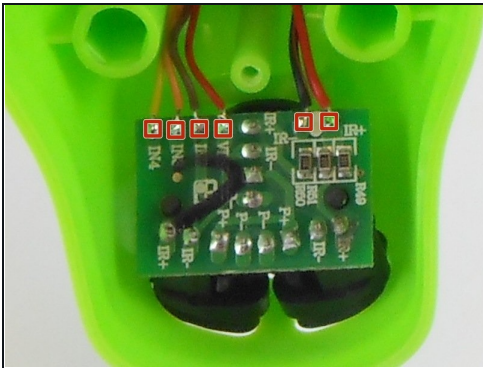
- Remove the roof of Zoomer Dino Boomer's mouth by unscrewing the 7.5 mm Phillips #0 screw.

## Step 4



- Carefully push the sensors out of the nose socket with your fingers.

## Step 5



- Use a soldering iron to remove the wires from the sensor chip by melting the metal joints on the chip.
  - Use the [tweezers](#) to remove the wires as you are soldering them.
- ⚠ Do not touch any parts of Zoomer Dino Boomer or yourself when using the soldering iron. The soldering iron will be very hot.
- ☑ When reassembling, extra solder may be required to reconnect the wires with the circuit board.

## Step 6



- Remove and replace the nose sensor.

---

To reassemble your device, follow these instructions in reverse order.