



Baby Einstein Take Along Tunes Music Button Replacement

Music button being unresponsive or get stuck. Hence, replace the button or by repositioning it

Written By: Shreya Sunny



INTRODUCTION

In this guide, you will learn how to remove and replace the music button in the middle of the device



TOOLS:

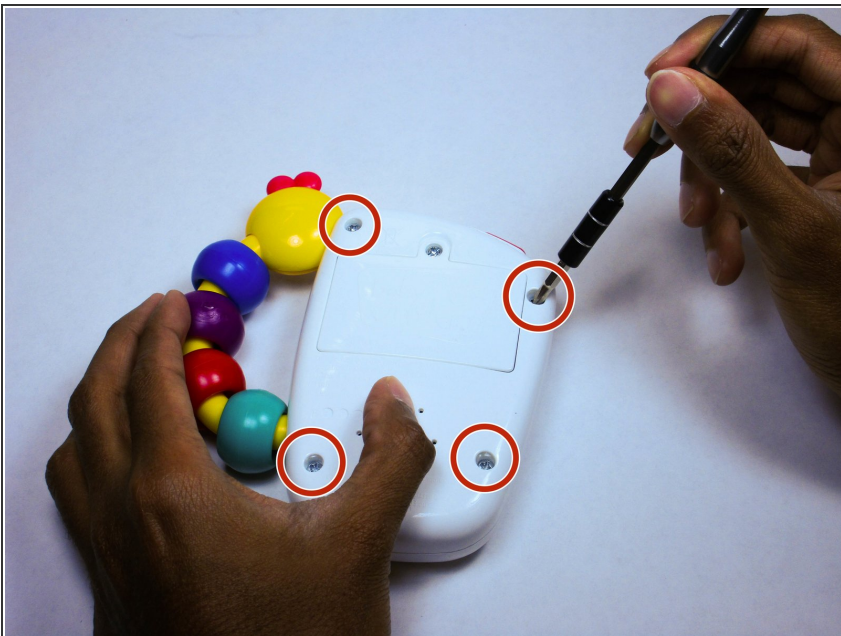
- [Phillips #1 Screwdriver](#) (1)
 - [iFixit Opening Tools](#) (1)
-

Step 1 — Music Button



- Place the device face down on a flat surface, so that the screws on the back are facing the ceiling.

Step 2



- Using a screwdriver loosen the four screws connecting the body of the device together.

Step 3



- Once unscrewed, pop the back of the device off using the plastic opening tool.

Step 4



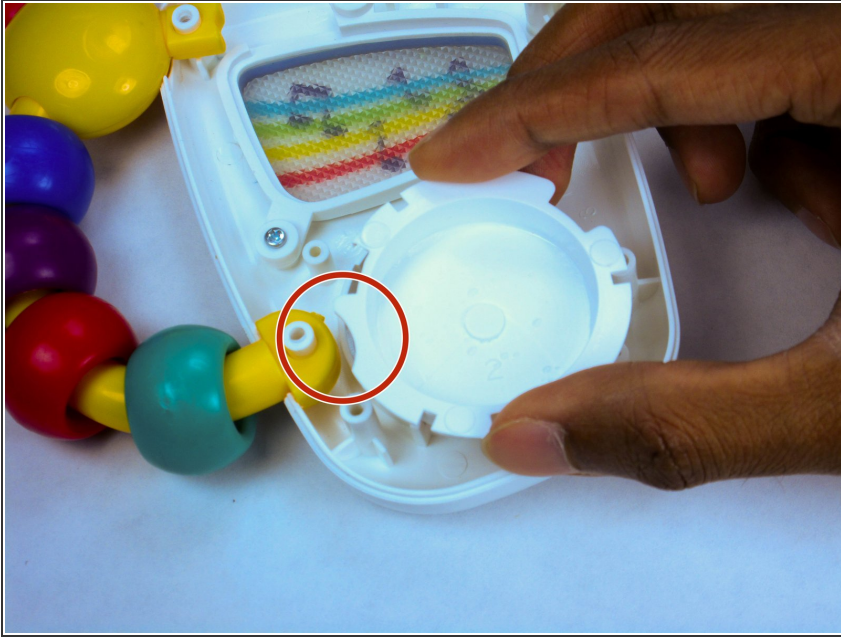
- Place the front of the device face down.

Step 5



- Using the plastic opening tool, pop the music button off.

Step 6



- Gently pull the music button off and replace it with a new one. If you want to put a music button back in, the marked curve must line up with the one on the body.

To reassemble your device, follow these instructions in reverse order.