



HP EliteBook 8440p Keyboard Replacement

This guide will show you how to replace the keyboard on an HP EliteBook 8440p laptop.

Written By: Michael Uytingco



INTRODUCTION

Are keys on your HP EliteBook 8440p laptop keyboard broken, stuck, or dirty? It might be time to replace your keyboard, and this guide will teach you how to do it yourself! Removing the keyboard is also a crucial step to getting inside the computer to make repairs or clean.



TOOLS:

- [Phillips #1 Screwdriver](#) (1)

non-magnetic

- [Spudger](#) (1)

- [Flathead Screwdriver](#) (1)

non-magnetic

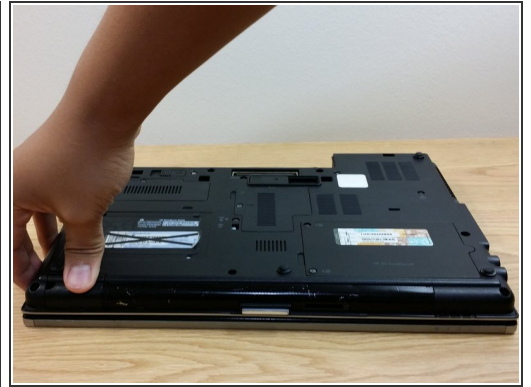
Use as an alternative to a Spudger



PARTS:

- [HP EliteBook 8440p Replacement Laptop Keyboard](#) (1)

Step 1 — Keyboard



i Before you begin, unplug all cables and devices from the laptop.

- Lay the laptop on its cover.

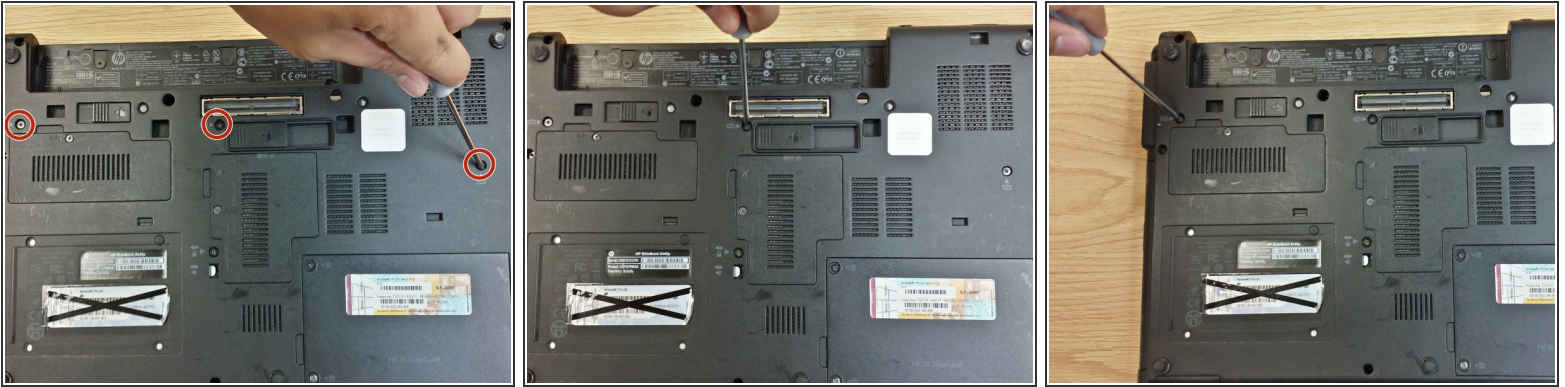
Step 2



- Release the battery by pulling the battery tab to the left.
- Remove the battery.

i The battery is already removed in the reference image.

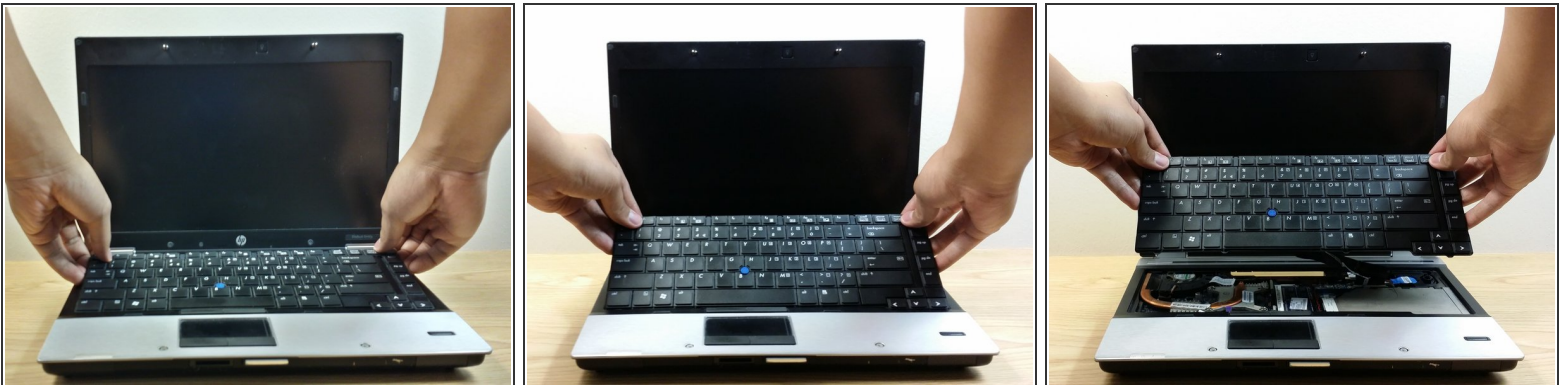
Step 3




- With a Phillips-head screwdriver, unscrew the three screws marked with the keyboard icon.

 Do not remove the screws from the casing; they are built to stay in when loose.

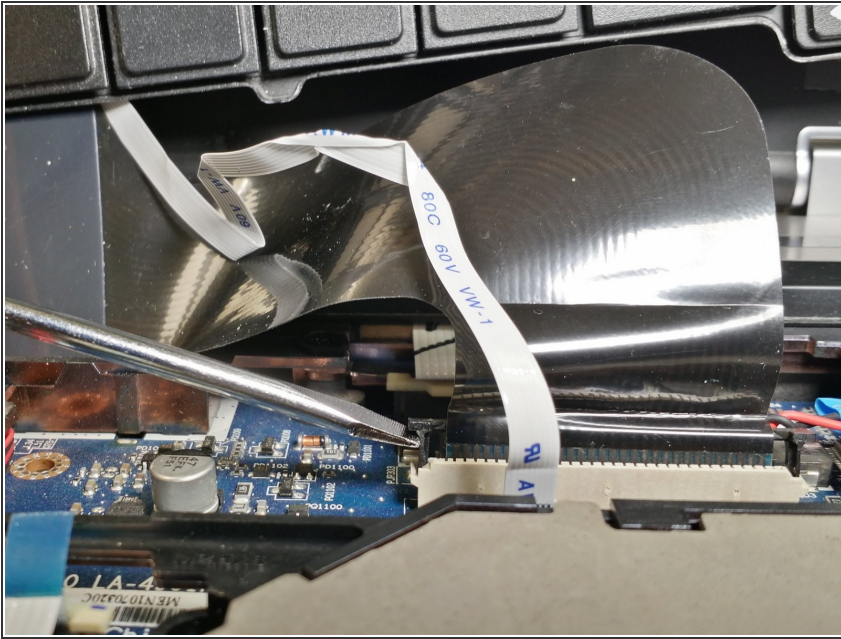
Step 4



- Turn the laptop over and open the cover.
- Push down the little clips located between the Function Keys to release the top of the keyboard. Lift the keyboard gently with a forward and upward motion.
- Rest the keyboard over the touch pad.

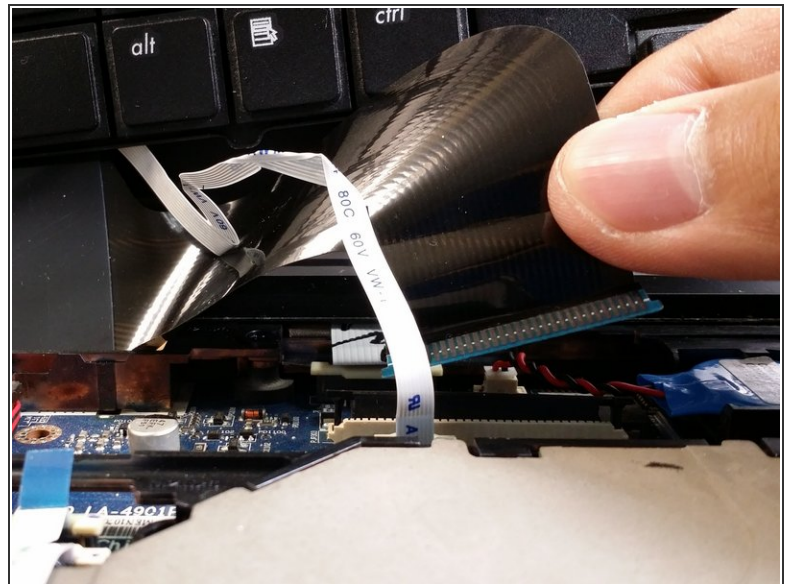
 When reassembling, line up the tabs at the keyboard's base with the casing's slots and reverse the motion.

Step 5



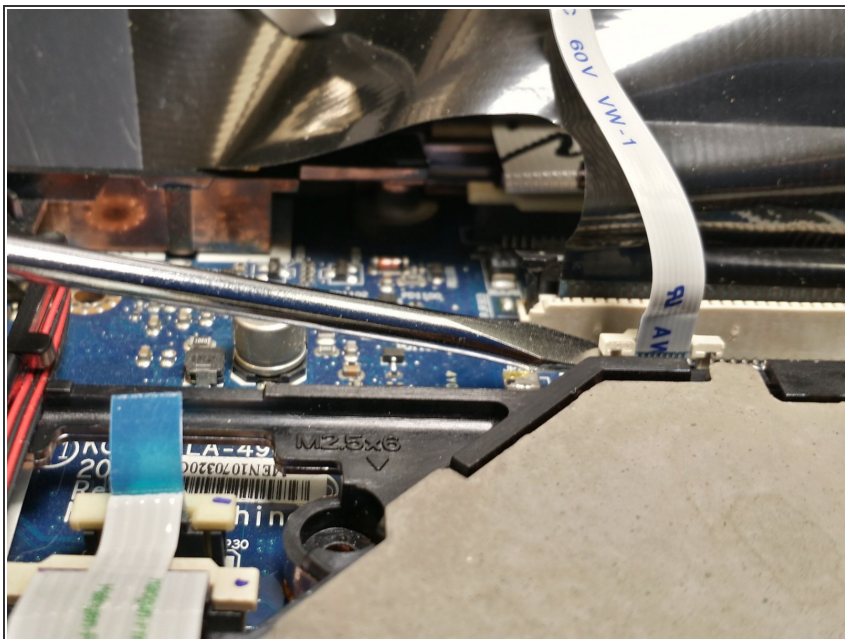
- Using a spudger or flat-head screwdriver, pull up the tabs at the black ribbon cable's sides to unlock the cable.

Step 6



- Pull the black ribbon cable out of its slot.

Step 7



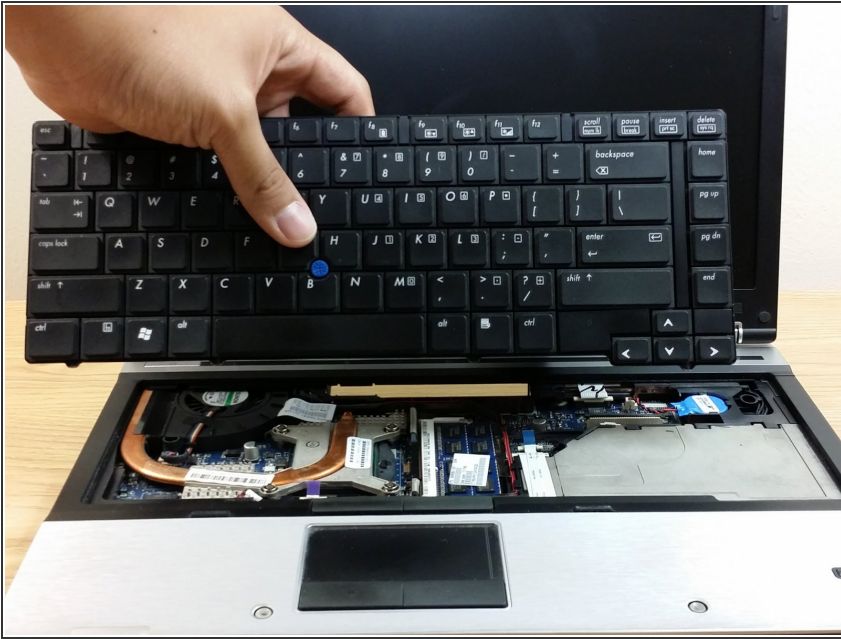
- Using a spudger or flat-head screwdriver, pull up the tabs at the white ribbon cable's sides to unlock the cable.

Step 8



- Pull the white ribbon cable out of its slot.

Step 9



- Remove the keyboard from the laptop.

To reassemble your device, follow these instructions in reverse order.