



# LG G Pad 7.0 Battery Replacement

This guide will show you step by step how to access the internals of a LG G Pad 7.0(LG-V410) and replace the battery.

Written By: GadgetERService



---

## INTRODUCTION

This guide will show you step by step how to access the internals of a LG G Pad 7.0(LG-V410) and replace the battery.

---

### TOOLS:

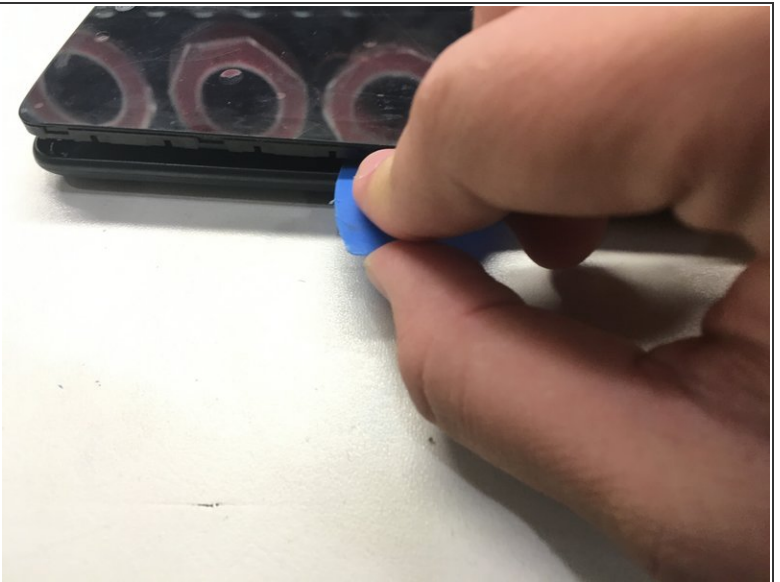
- [iFixit Opening Picks set of 6](#) (1)
  - [Tweezers](#) (1)
  - [iSesamo Opening Tool](#) (1)
-

## Step 1 — LG G-Pad 7.0



- Here it is - LG G-Pad 7.0. Let's dive right in!

## Step 2 — Jumping right into action



- First things first, use the handy pick iFixit sells on their online store. Carefully pry the frame apart in between the screen assembly and back cover. Be extremely careful, you don't want to damage the motherboard..

### Step 3 — First Glimpse



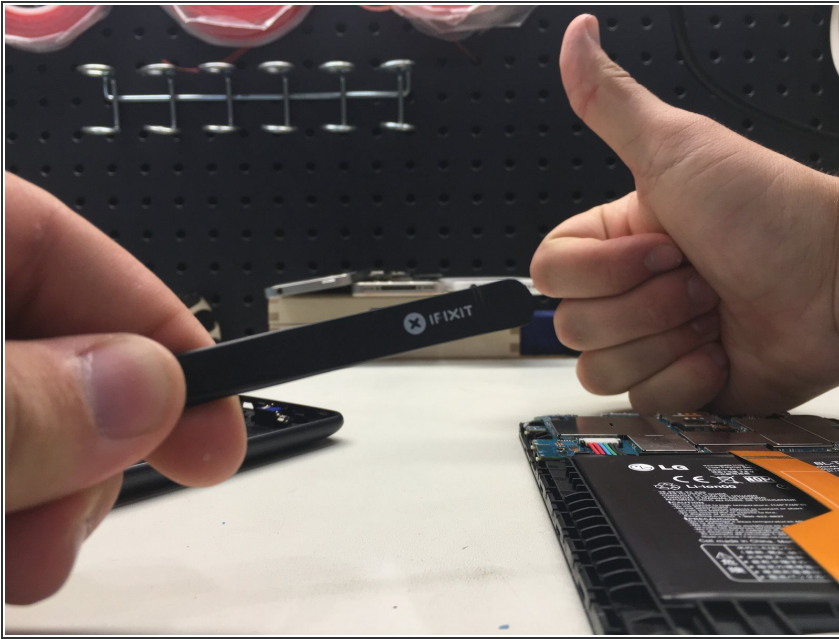
- Vuala! We're in! Carefully slide the screen assembly away from the back cover.

### Step 4 — A Look on the Inside



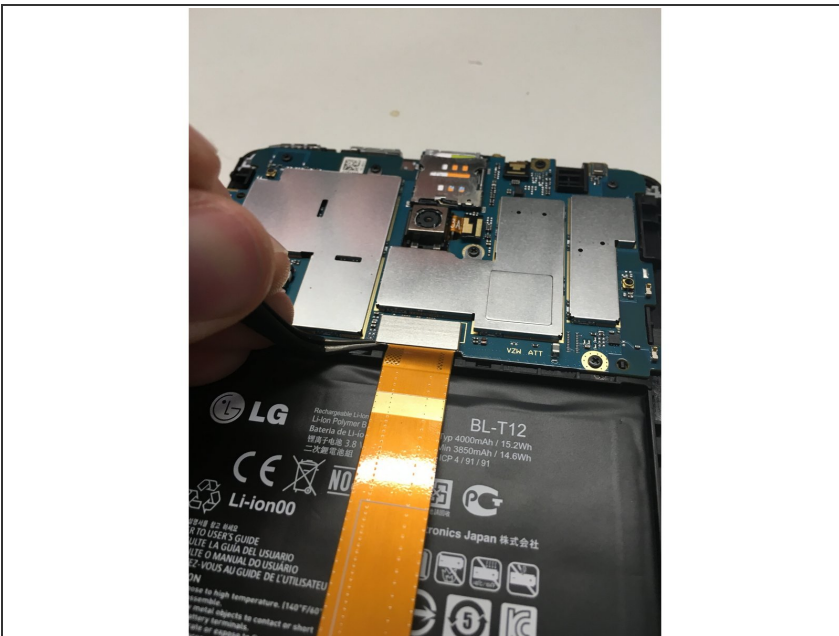
- Here's the inside of the tablet. Pretty straight forward, nothing to spectacular.

## Step 5



- Grab your \* [Tweezers](#), the best tweezers you can get!

## Step 6 — Charging Port Flex



- Carefully pry up the charging port connection from the bottom left with your [Tweezers](#).

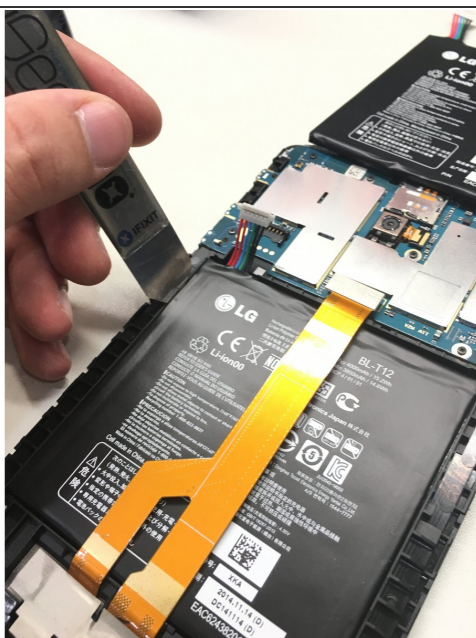


## Step 7 — Battery Connection



- Carefully lift the battery connector.

## Step 8 — Removing the Battery



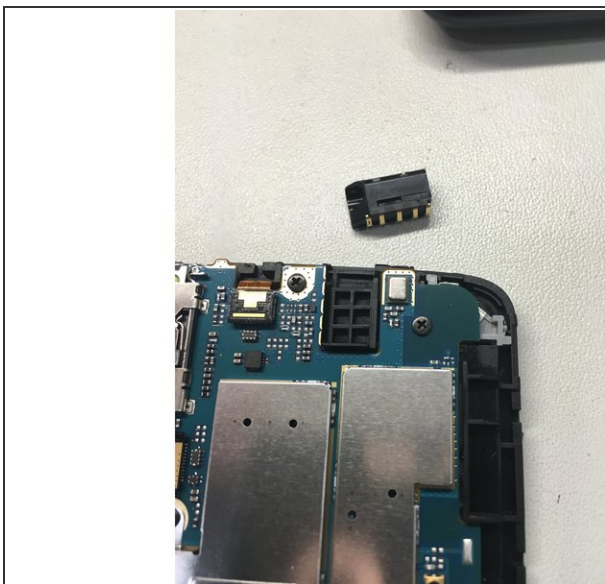
- Grab your [iSesamo Opening Tool](#) and break the adhesive around the edges of the battery.

## Step 9 — Disposal of old Battery



- After removing the faulty/dead battery, make sure you properly dispose it.

## Step 10 — Don't Forget!



- After reconnecting the new battery and charging flex cable, make sure you put the headphone jack back into place.

## Step 11 — All Done! Good Job!



- There you go! A quick battery replacement on your LG G-Pad.

To reassemble your device, follow these instructions in reverse order.