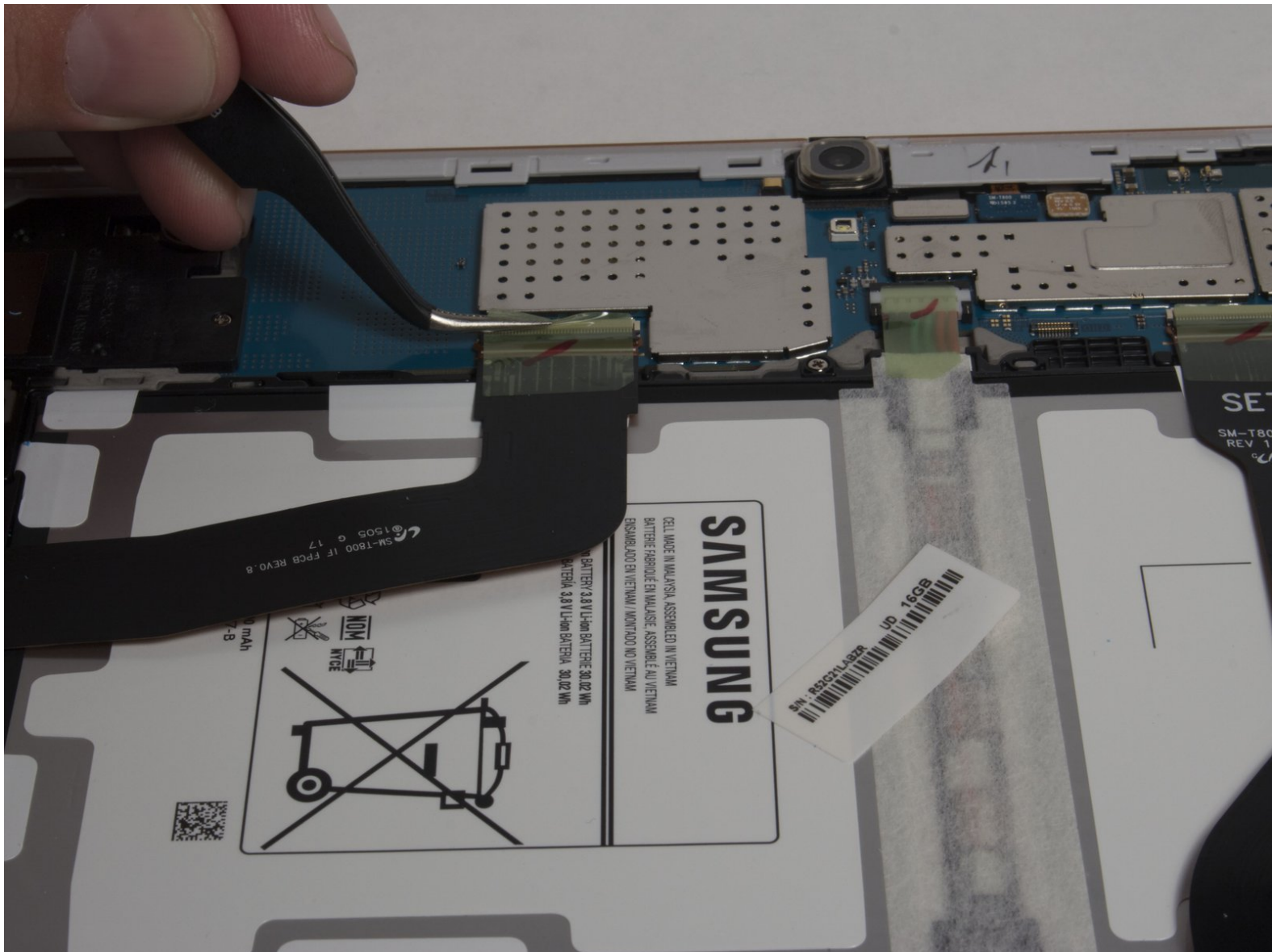




Galaxy Tab S 10.5 Battery Replacement

Steps to remove the battery of the Samsung Galaxy Tab S 10.5.

Written By: Jordan Soto



INTRODUCTION

This guide will give step by step instructions on how to remove and replace an existing battery in the Samsung Galaxy Tab S 10.5.



TOOLS:

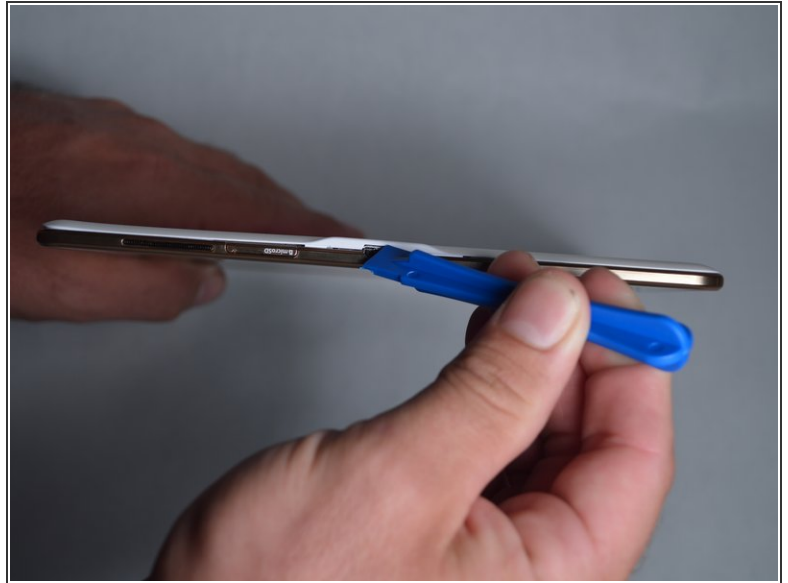
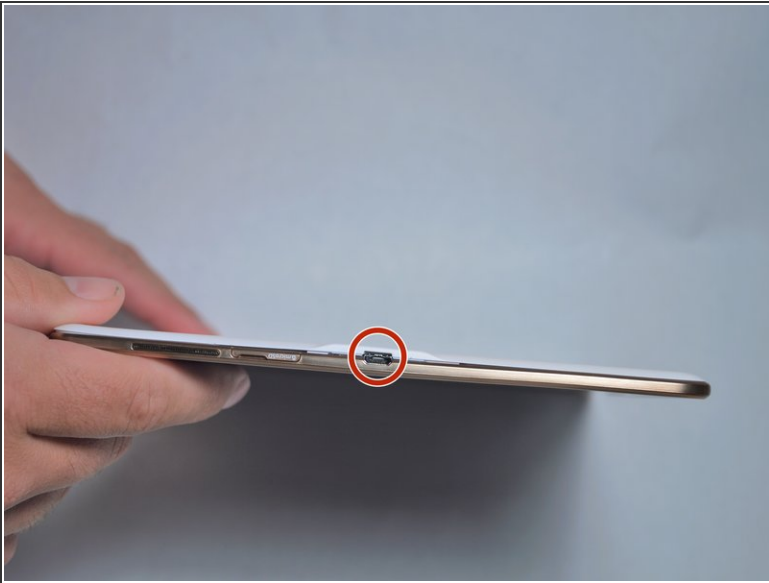
- [Tweezers](#) (1)
- [iFixit Opening Tools](#) (1)
- [Phillips #00 Screwdriver](#) (1)
- [Phillips #1 Screwdriver](#) (1)



PARTS:

- [Samsung Galaxy Tab S 10.5 Battery](#) (1)

Step 1 — Disassembling Galaxy Tab S 10.5 Back Cover



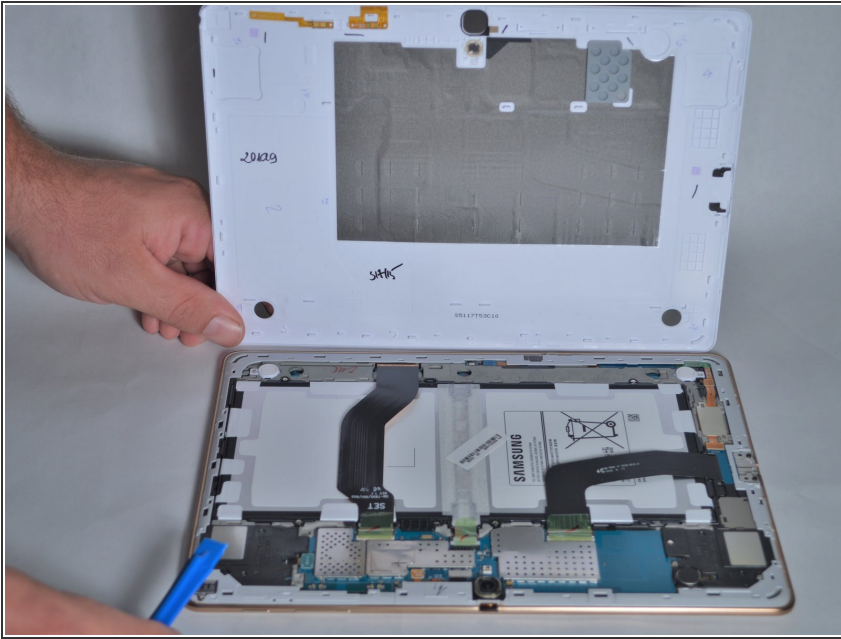
- Place the plastic opening tool into the SD card slot or charge port.
- Try in an upward motion until you see a separation between the tablet and back cover.

Step 2



- Work around the entire device by sliding the plastic opening tool around the rim.
- ⓘ If this is the first time, it will be hard to separate the back cover from the tablet.
- ⓘ The clips are approximately 5 cm apart. While working around the device, the clips will make a dislocating sound when disconnected.

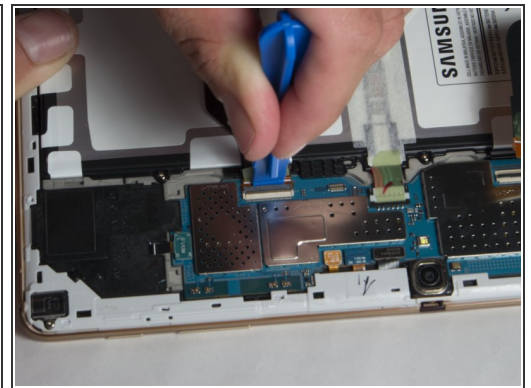
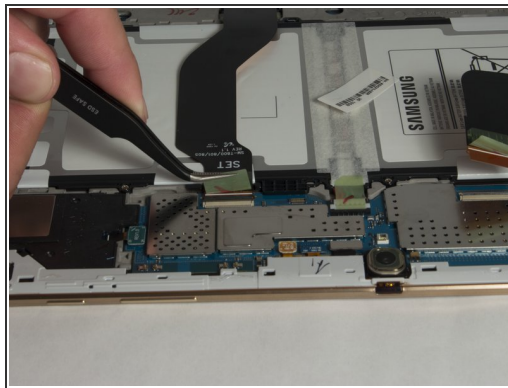
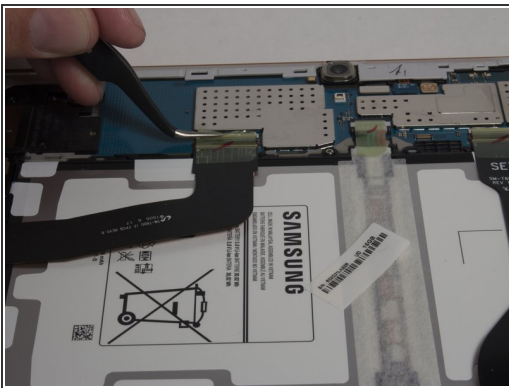
Step 3



- Remove the back cover once all links have been separated.

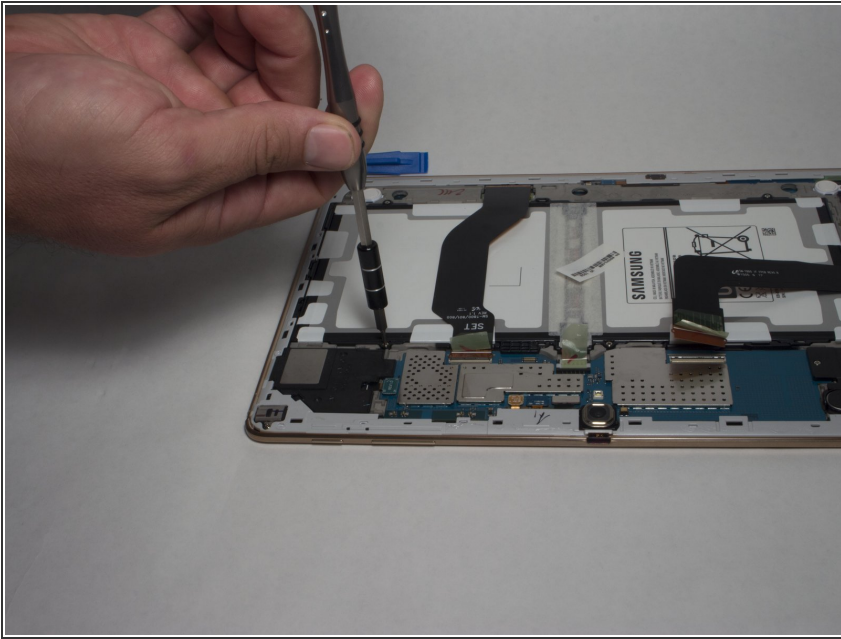
⚠ Be careful when touching any of the internal components of the tablet.

Step 4 — Battery



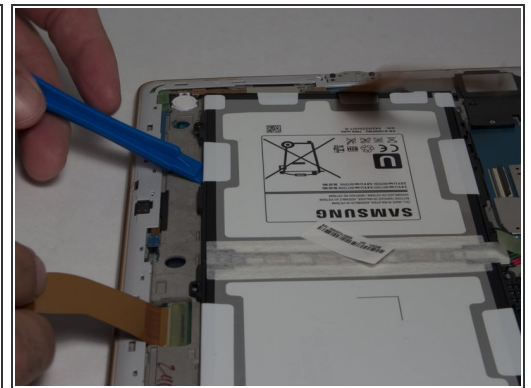
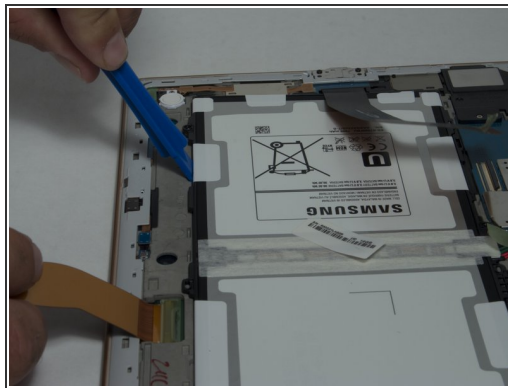
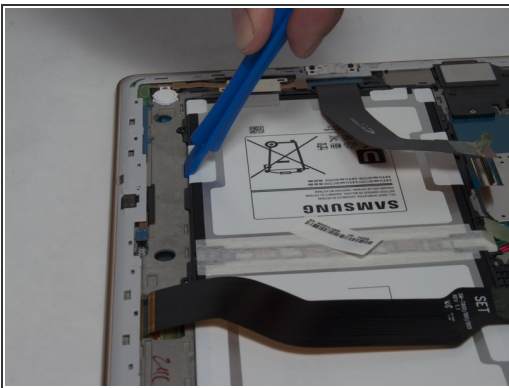
- Using tweezers, peel back the green tape from the ZIF connectors on the two black ribbon cables.
- Use a plastic opening tool to lift up the plastic clips on the ZIF connectors.

Step 5



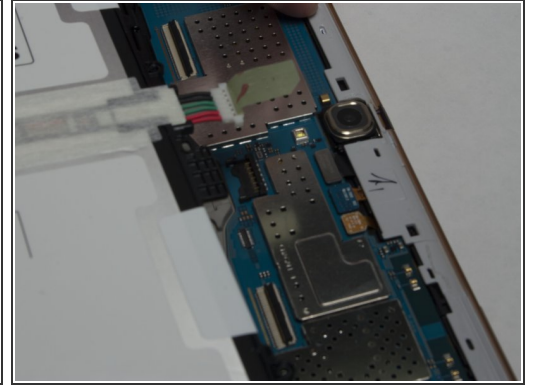
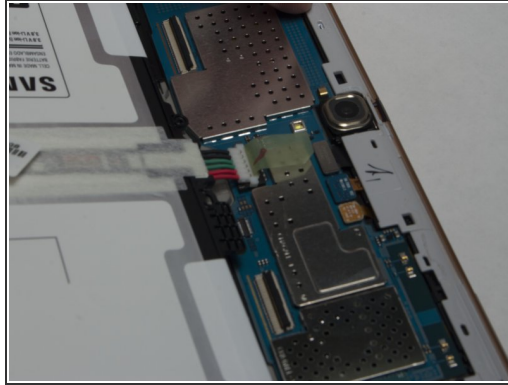
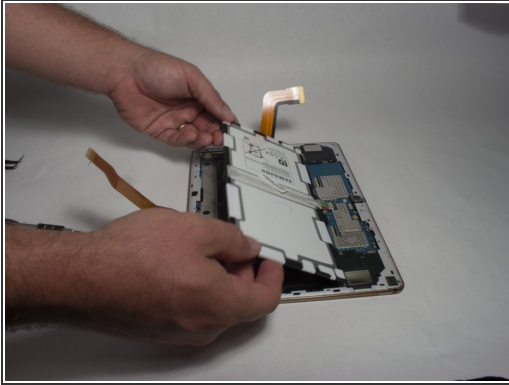
- Remove the six 2mm screws Phillips #000 screws surrounding the battery.

Step 6



- Place the plastic opening tool between the frame and battery.
- Move the plastic opening tool in a downward motion, away from the battery to bring the battery out of the device.

Step 7



- Hold the battery and disconnect the plug to remove the battery.

To reassemble your device, follow these instructions in reverse order.