



# VTech Spin and Learn Color Flashlight

## Speaker Replacement

Guide that covers a step-by-step procedure for removing and disconnecting the speaker from the flashlight housing. If the speaker cannot be fixed, it will be removed and replaced.

Written By: Nathaniel Troyer



---

## INTRODUCTION

The speaker for this device rests in the speaker housing at the back of the flashlight. The guide explains the procedure for accessing and removing the speaker from the flashlight. If needed the speaker will be replaced.

---

### TOOLS:

- [Soldering Iron](#) (1)
  - [Phillips #0 Screwdriver](#) (1)
  - [Phillips #1 Screwdriver](#) (1)
-

## Step 1 — Battery Housing



- Locate the battery housing on the back of the flashlight as pictured.
- Unscrew the single 8 mm Phillips #1 screw.
  - ⓘ The screw will stay attached to the cover that will be removed.
- Lift the battery housing cover to reveal the battery terminals. Remove the batteries.

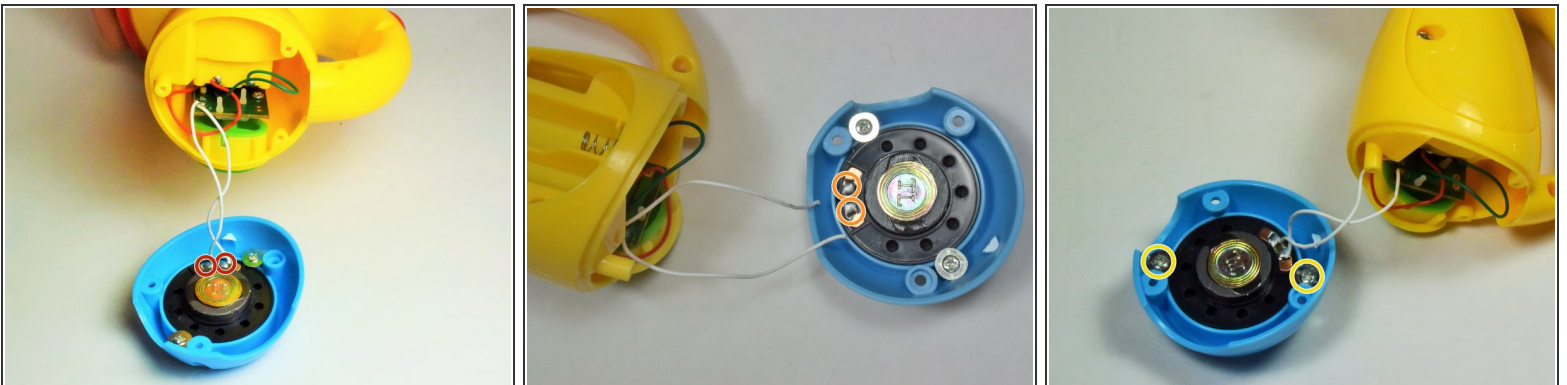


## Step 2 — Speaker Housing



- Locate the light blue speaker housing on the bottom of the flashlight.
- Remove the three 6 mm Phillips #0 screws.
- Once the screws have been removed, pull the housing away from the yellow body of the flashlight. Be careful not to disconnect the white wires from the speaker, unless speaker replacement is required.

## Step 3 — Speaker



- Locate the wires connected to the speaker indicated by the red circles in image one.
- Desolder the wires from the connection point circled in the second image. If you're unsure of how to use the soldering station, use [iFixit's guide](#) to soldering and desoldering to help.
- Remove the 2 highlighted 4mm Phillips #0 screws in image three.

To reassemble your device, follow these instructions in reverse order.