



Archived

# Logitech K750 Keyboard ML2032 to CR2032 Battery Conversion

NOTE: You can now buy ML2032 batteries online,...

Written By: Endrju



# INTRODUCTION

*NOTE: You can now buy ML2032 batteries online, so you will no longer need to disable the solar panels.*

Logitech support will not help you and they do not have ML2032 as a spare part.

Maxell - battery manufacturer answered me this:

Unfortunately ML type batteries are industrial batteries which we sell to OEMs only. Due to **strict health and safety purposes** we are not allowed to sell this type of batteries to endusers.""

The claim from Maxell is also the reason why I do not believe buying ML2032 from eBay nor Amazon is safe.

So I decided to modify my keyboard. If you disable solar panels, there will not be any charging for the battery and then you can use regular CR2032 battery which is easy to buy and replace.

And since I did not find any guide like this I decided to share the steps with you.



## TOOLS:

[Phillips #0 Screwdriver](#) (1)

*or Phillips 1 Screwdriver*

[Soldering Iron](#) (1)

[Solder Vacuum](#) (1)

[Electrical Tape in 6 Assorted Colors](#) (1)



## PARTS:

[CR2032 Lithium Battery](#) (1)

[ML2032 Rechargeable Battery](#) (1)

---

## Step 1 — Turn off the keyboard



- Before you begin, flip the keyboard's power switch into the **OFF** position.

## Step 2 — Flip the keyboard over



- Flip the entire keyboard over, keys facing down.



### Step 3 — Pry open the battery tray



- ❶ The ML2032 rechargeable coin cell battery is located in a tray at the back edge of the keyboard.
- Insert the flat end of a spudger into the gap between the battery tray and the top surface of the keyboard.
- Pivot the spudger down, towards the top of the keyboard, to begin to pry the tray out of its cavity.

### Step 4 — Remove the battery tray



- Use the flat end of the spudger to push the battery tray out and away from the keyboard.
- ❶ The tray is held in by small "ears" and may take a significant amount of force to dislodge.
- Remove the battery tray.
- ☑ During reassembly, firmly push the battery tray into its slot until it clicks into place.

## Step 5 — Remove the battery



- Push the battery out of the tray to remove it.
- ⓘ Note the battery orientation—it can only go in one way. Set the battery into the tray with side with the text and the "+" sign facing down.
- ⚠ Use only a rechargeable **ML2032** coin cell battery as a replacement. Although it's the same size and shape as the more common **CR2032**, CR2032s are not rechargeable.

## Step 6 — Remove old battery



- Steps are described in this guide [Logitech K750 Keyboard Battery Replacement](#). Turn off the keyboard before removing the battery.

**⚠ ML2032 battery can be dangerous** so be careful. For more details read [Maxell Safety Data Sheet](#) and [Maxell Safety Instructions](#).

- ① For more information about ML type batteries read this [Lithium Manganese Dioxide Rechargeable Battery](#).

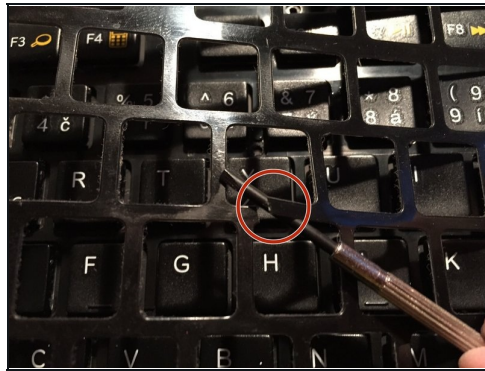
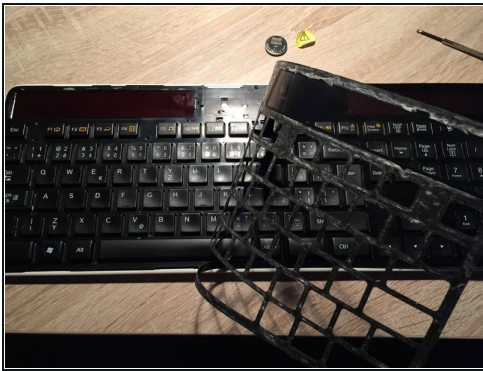
- **Trash old ML2032 battery in special container!**

## Step 7 — Now decide how you will continue in this guide



- ① You can just simply cover **both** solar panels with some thick black tape (like electrical tape) and then continue to the step 10. If you decide for this you need to **make sure** (this is really important!) that your Solar app is showing zero energy received from the solar panels (CL2032 can not be recharged)!
- ① Or you decide for **100% working** but more complicated solution which involves peeling off keyboards plastic top deck (it covers screws) and desoldering wires form the solar panels. Your keyboard cover might not stick back as good as it was. In this case continue to the next step.

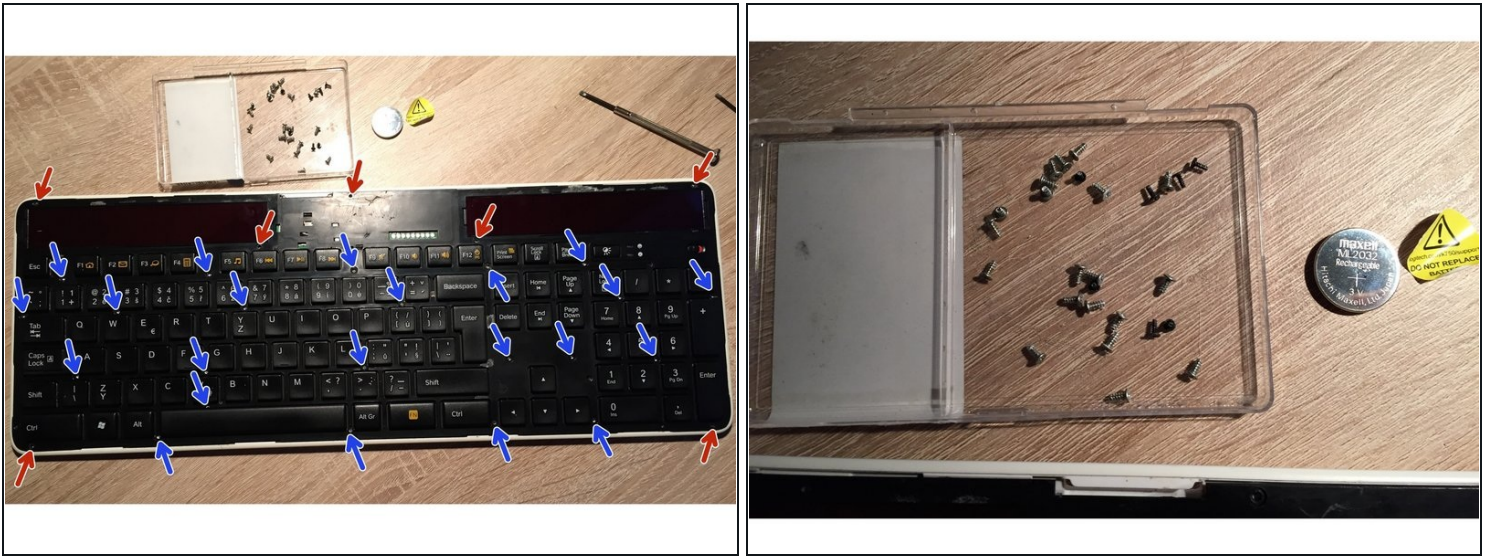
## Step 8 — Peel off the plastic top deck



- Be careful to not crack the plastic deck. Don't pull it off hard.

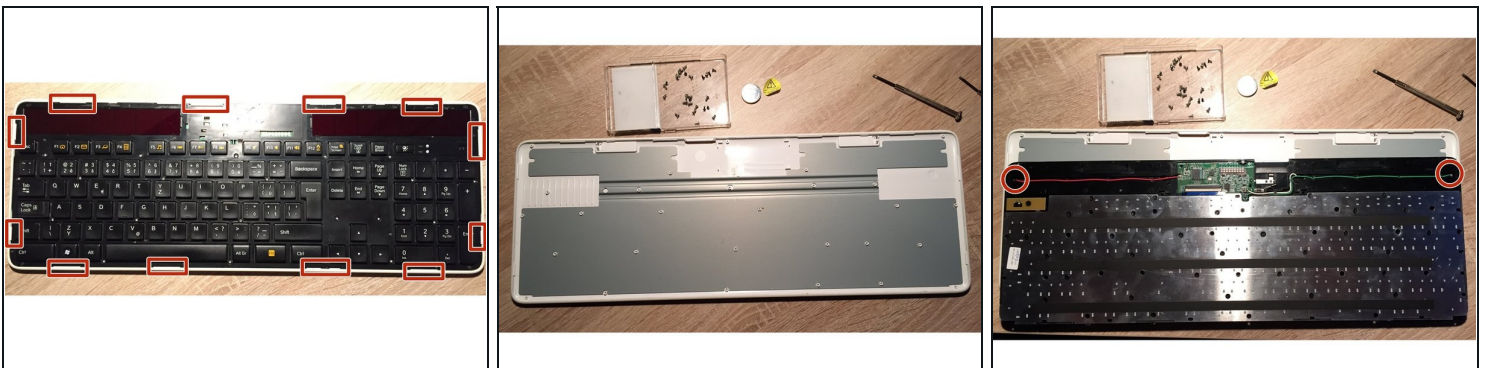


## Step 9 — Unscrew the screws



- Remove the seven black Phillips screws.
- Remove the 22 silver screws.
  - ❗ Your model may only have 21 silver screws.
- Put the screws somewhere into the bowl to not lose them and try to remember the position of the black ones.

## Step 10 — Remove and flip the top cover



- Unclip the back panel from the front (keys) panel.
- When you flip the (keys) panel you can notice that both solar panels have a pair of cables.

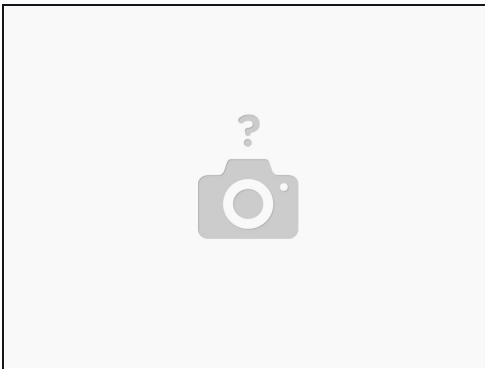


## Step 11 — Desolder one wire from both solar panels



- I have decided to desolder the long cable (red and green one) because they are far away from the logic board so I will not transfer heat to it while desoldering them.
- Tape desoldered cables so they do not come in contact with anything.

## Step 12 — Insert new CL2032 battery



- Insert fresh CL2032 battery in the battery compartment - check the polarity a close battery tray.
- ⓘ **Note:** your Solar app will be showing zero energy because there is not power coming from the solar panels to the logic board.

---

To reassemble your device, follow these instructions in reverse order.