



# Canon PowerShot S400 Battery Replacement

This guide describes how to remove the battery casing for cleaning.

Written By: Adam Grijalva



---

# INTRODUCTION

This guide illustrates how to remove the battery casing.



## TOOLS:

- [Spudger](#) (1)
  - [Phillips #00 Screwdriver](#) (1)
-

## Step 1 — LCD Screen



 Unless stated otherwise, use a Phillips #00 screwdriver to remove all screws.

- On the backside of the camera, remove the 4.75 mm screw that sits at the top right corner.
- Remove the four 4.75 mm screws that sit at the bottom of the camera.

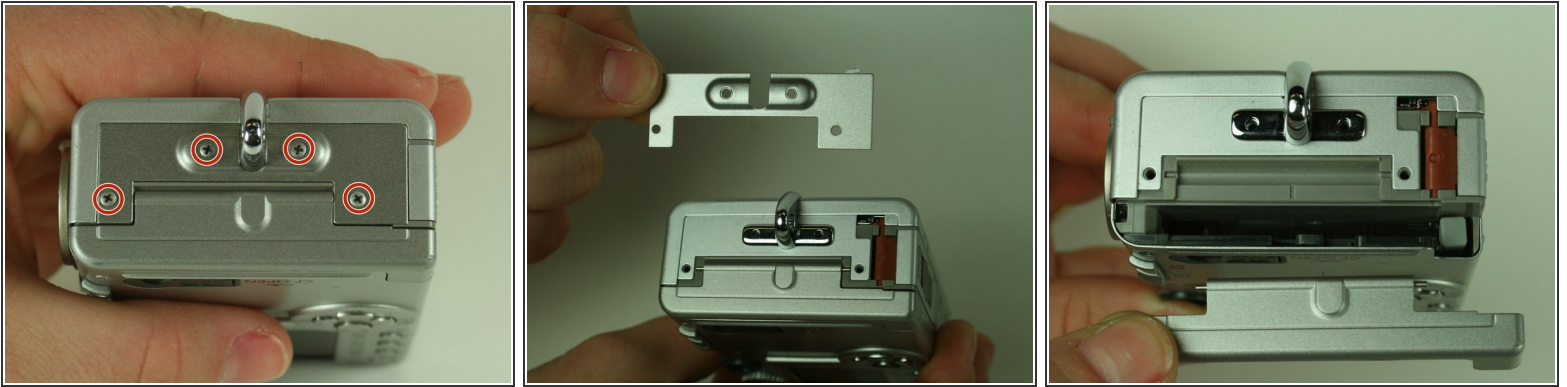
## Step 2



- On the side of the camera, remove the two 4.75 mm screws that sit near the USB digital terminal.

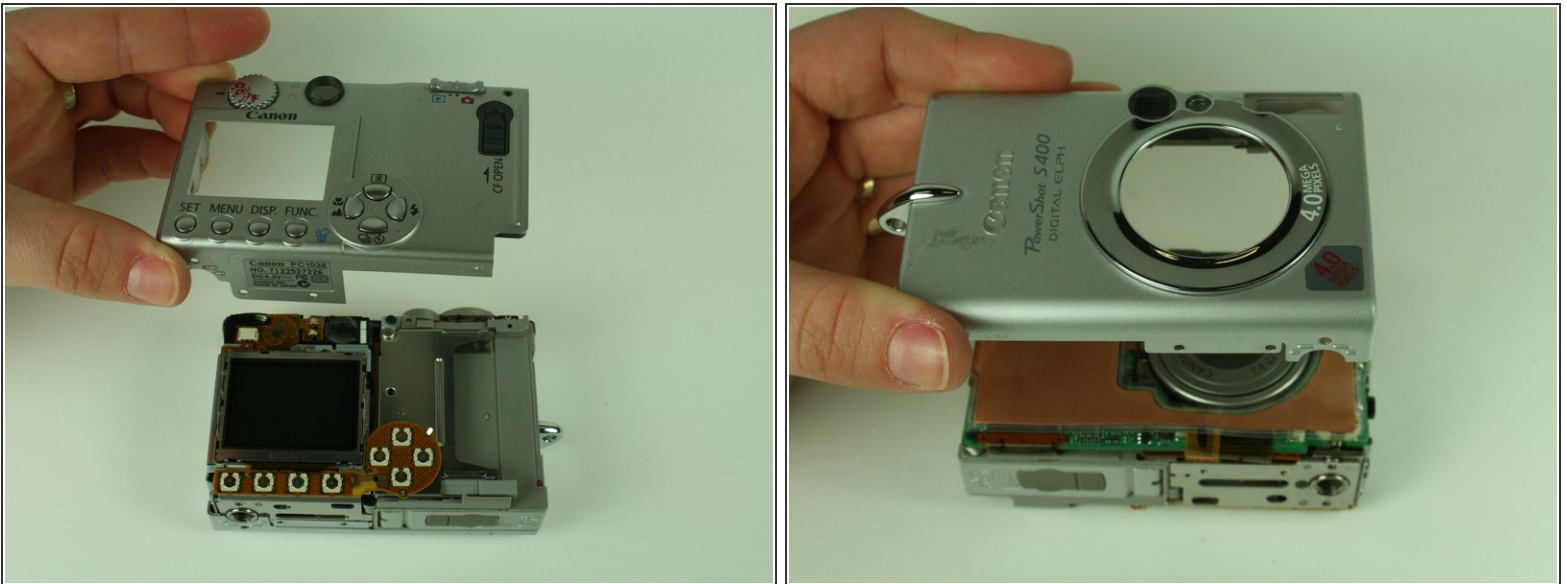



### Step 3



- On the side of the camera, remove the four 4.75 mm screws that sit near the wrist strap mount.
- Remove the two small metal plates, which the four screws hold in place.

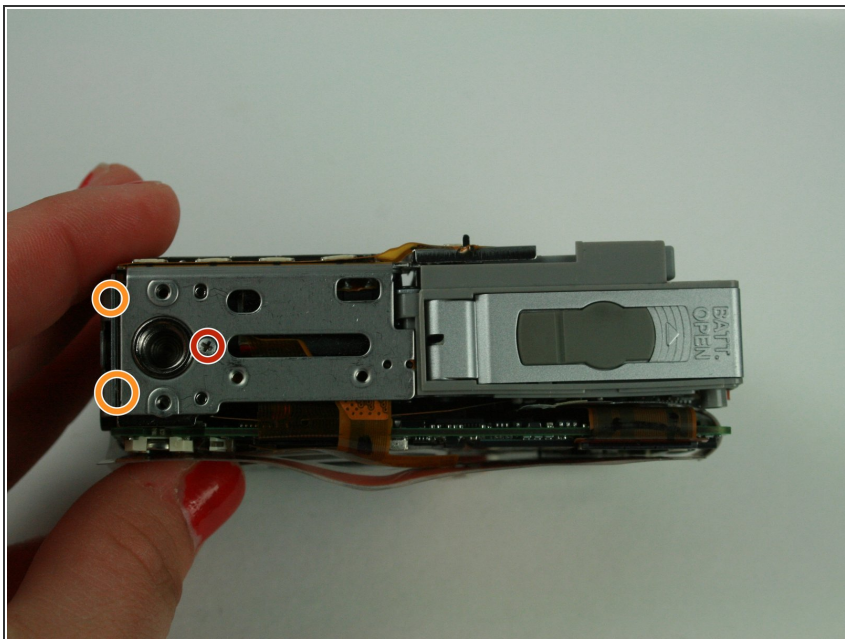
### Step 4




 When removing the casing, do not drop the small black plastic piece. This piece sits in a small gap above the lens, to the left of the flash, and underneath the camera case.


- Remove the small black plastic piece and set it aside. If necessary, use tweezers to remove the small black plastic piece.
- Detach the front case and back case.

## Step 5

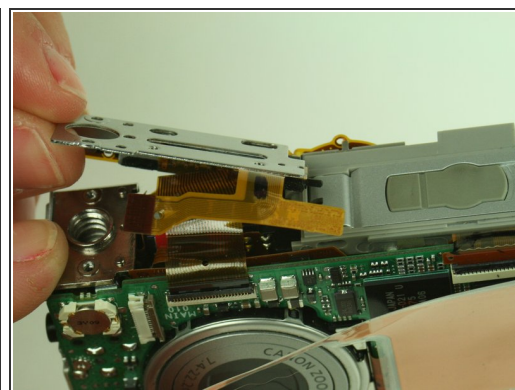
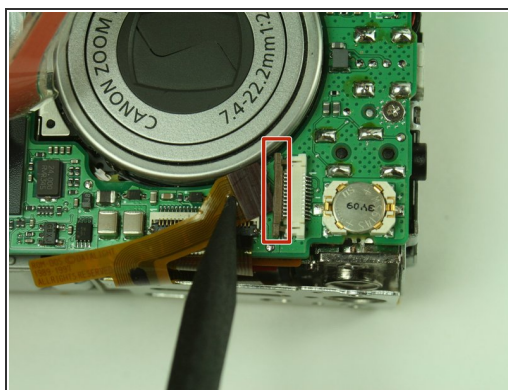
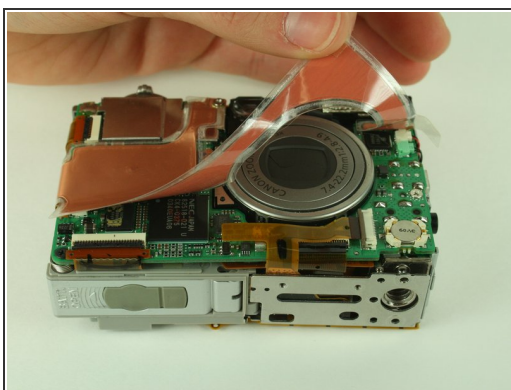


 Do not remove the metal plate this step refers to. Removal at this step may damage the ribbon cable. Wait until the next step to remove the plate.

- Remove the 3.5 mm screw that sits on the metal plate at the bottom of the camera.
- Remove the two other 3.5 mm screws that sit on the side, to the left of the screw you just removed.

 In the image, we have already removed some of the screws.

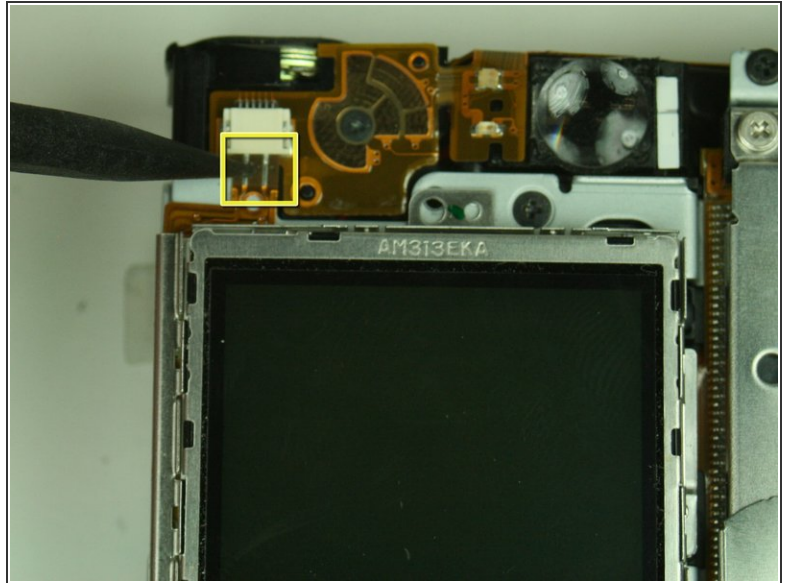
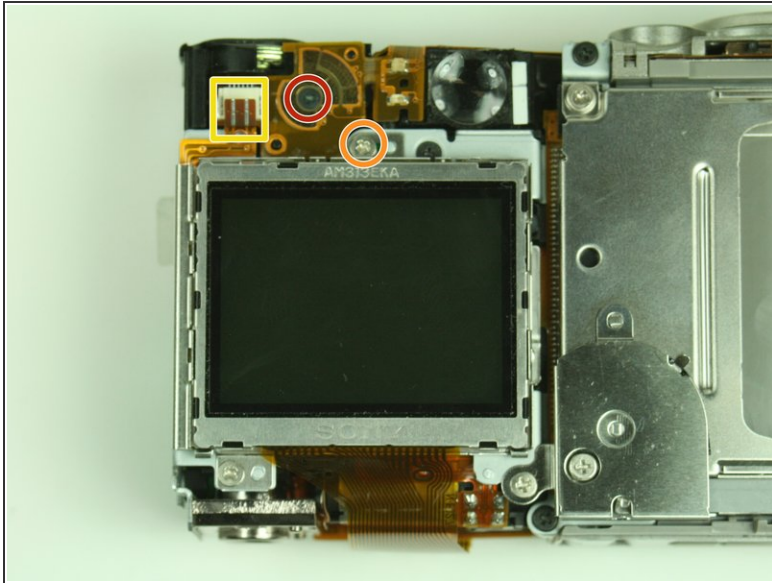
## Step 6



- A ribbon cable attaches to the metal plate and to the main circuit board, on the front of the camera.
- Gently release the black latch.
- Remove the ribbon cable and metal plate assembly.

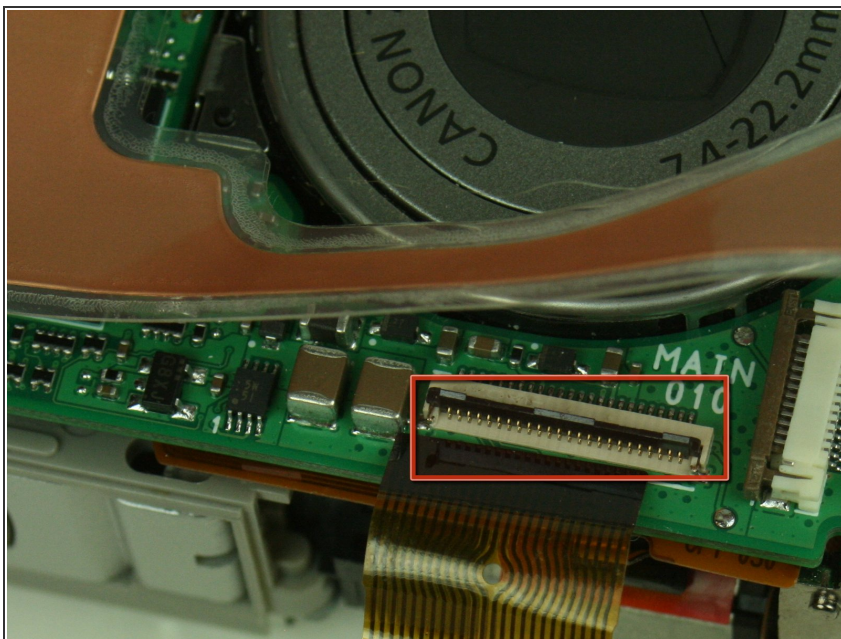


## Step 7



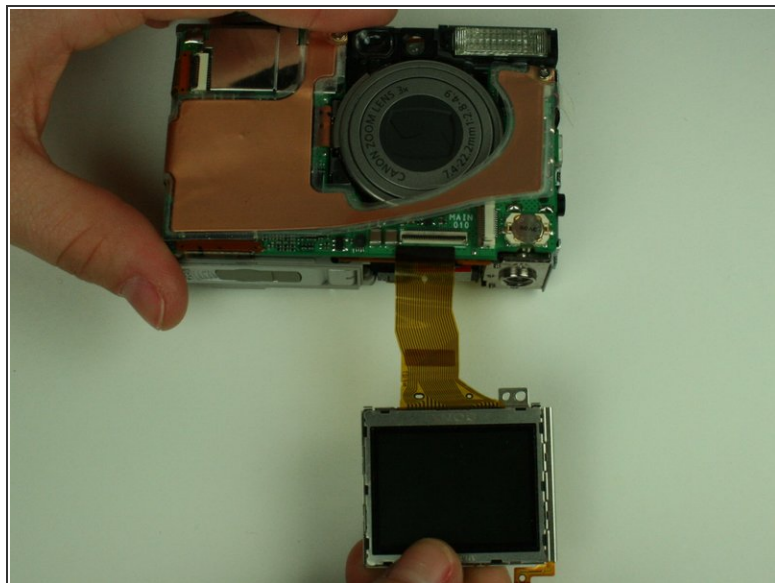
- On the backside of the camera, remove the 3.5 mm screw that sits to the left of the viewfinder and above the LCD screen.
- Remove the second 3.5 mm screw that sits directly above the LCD screen.
- Gently detach the ribbon cable.

## Step 8



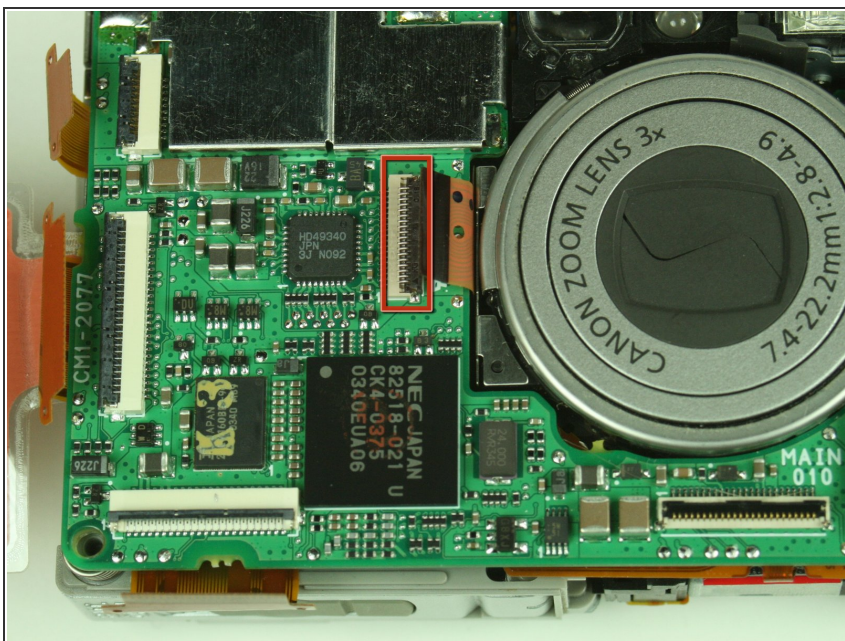
- Locate the ribbon cable on the main circuit board, which sits below the lens.
- Gently release the black latch on the ribbon cable connector and detach the ribbon cable.

## Step 9



- Remove the LCD screen and set it aside.

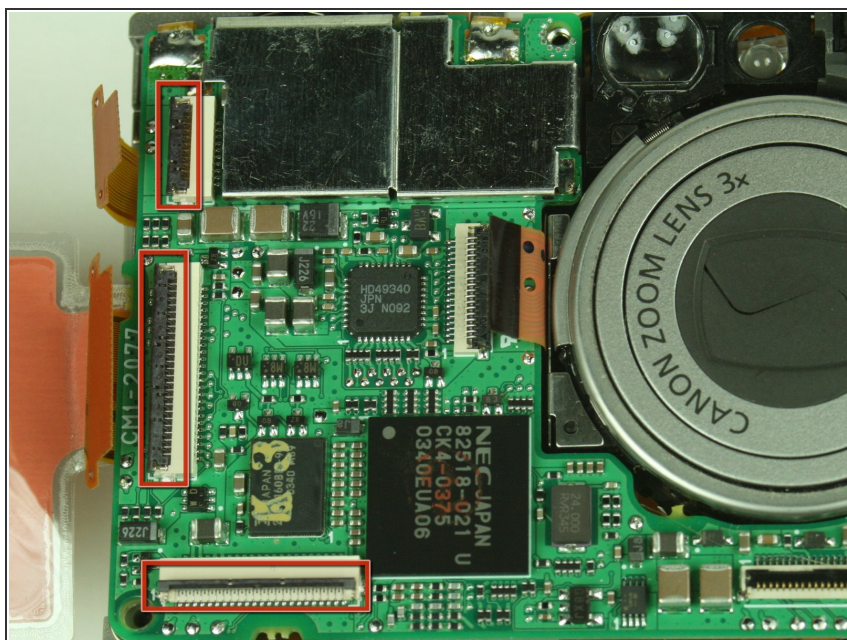
## Step 10 — Battery



- Locate the ribbon cable connection to the left of the lens on the main circuit board.
- Gently flip open the black latch on the connector and detach the ribbon cable.

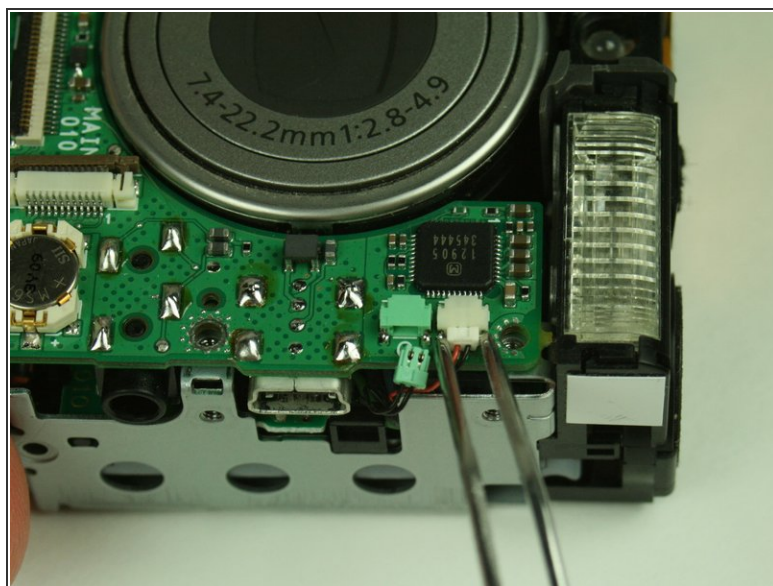
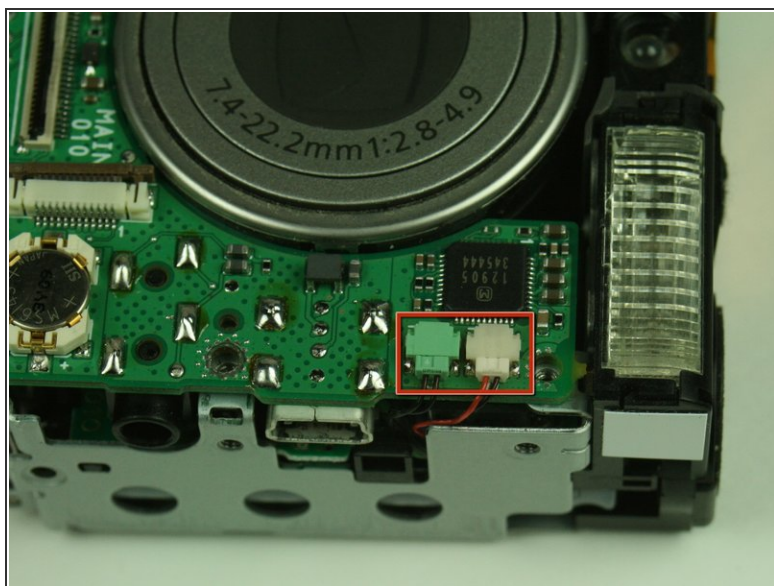


## Step 11



- Locate the three ribbon cables on the main circuit board. Gently flip open these black latches.
- Gently disconnect the ribbon cables.

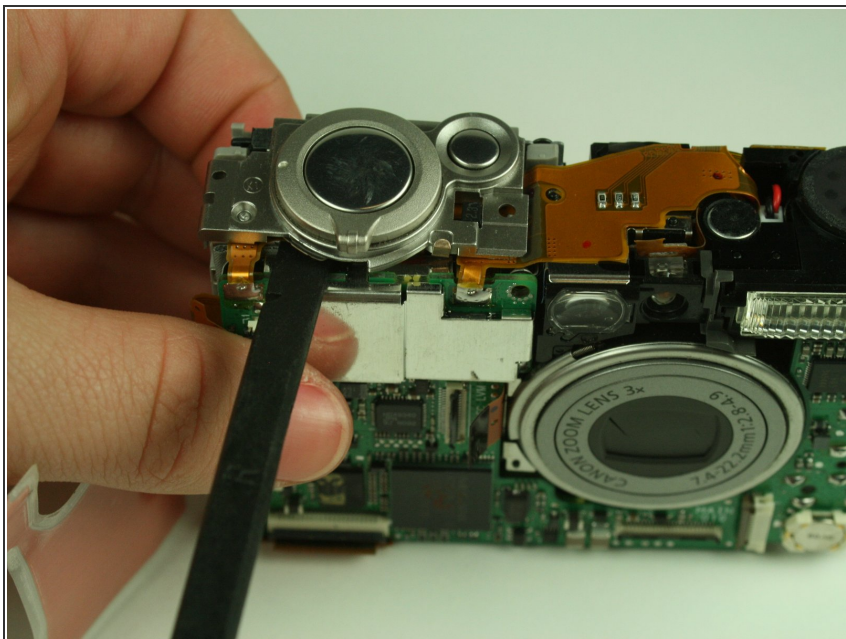
## Step 12



- Locate the white and green connectors underneath the flash.
- Gently disconnect these connectors.

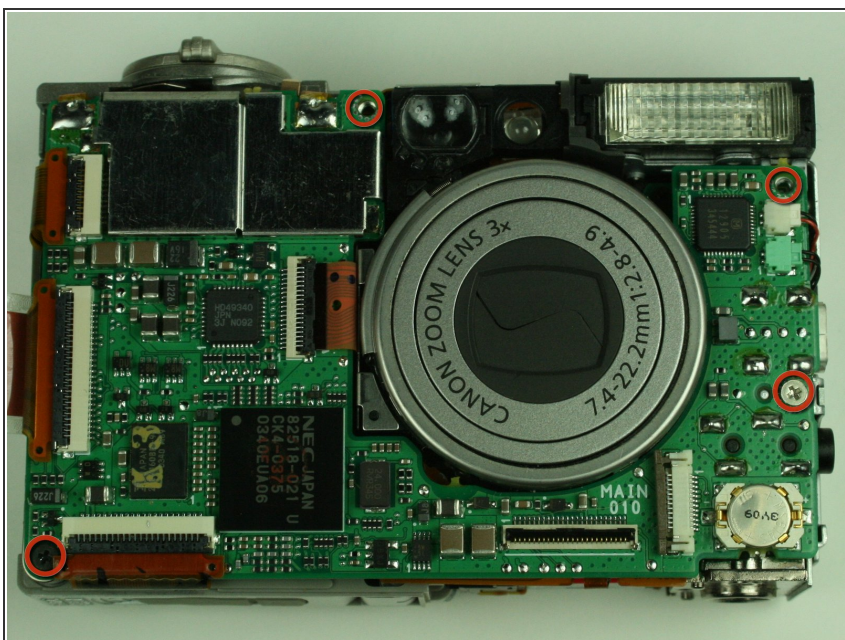


## Step 13



- Using a spudger, carefully pry the shutter button assembly from the camera.

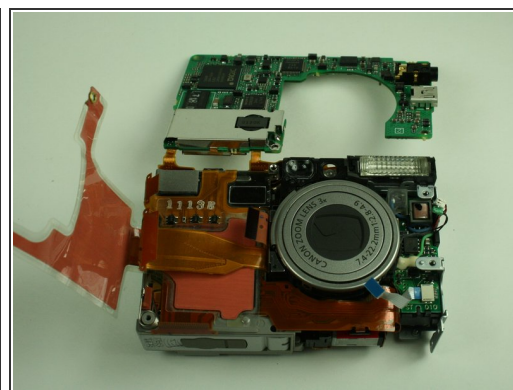
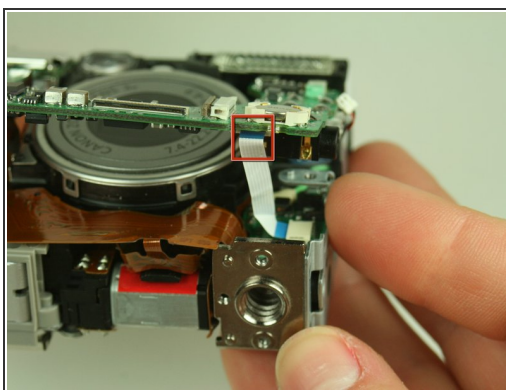
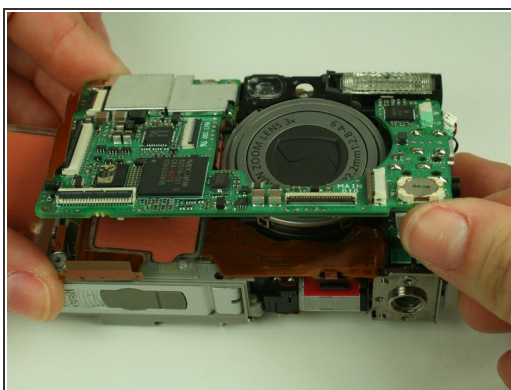
## Step 14



- Remove the four screws securing the main circuit board to the rest of the camera. (In the image, some of the screws have already been removed)

⚠ Do not remove the main circuit board yet.

## Step 15

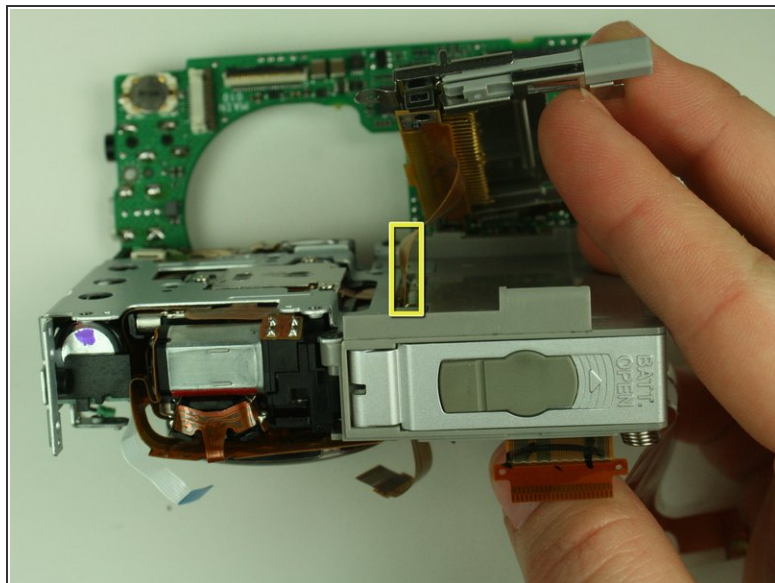
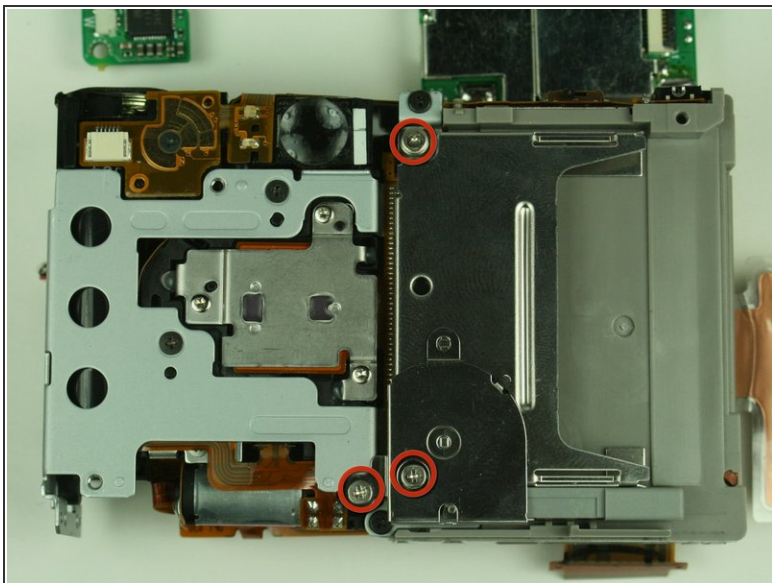


⚠ Do not completely lift the circuit board off the camera. The circuit board is attached to the top of the camera by a soldered ribbon cable. Lifting the main circuit board off the camera will break these soldering points.

- Gently lift the bottom of the main circuit board, the side without the soldered attachment points, like a hinge.
- Locate the white ribbon cable attached to the underside of the main circuit board.
- Gently remove the white ribbon cable from the connector.

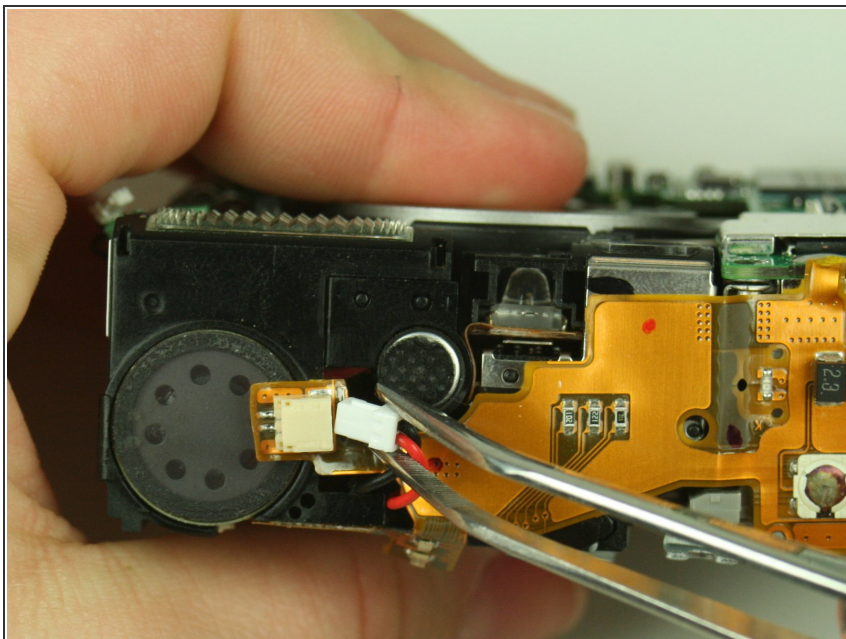


## Step 16



- Locate and remove the three 3.45mm screws on the backside of the camera that secure the CF card slot.
- Make note of the orientation of the ribbon cable connected to the CF card slot. You will need this for re-assembly.
- Gently remove the CF card slot.

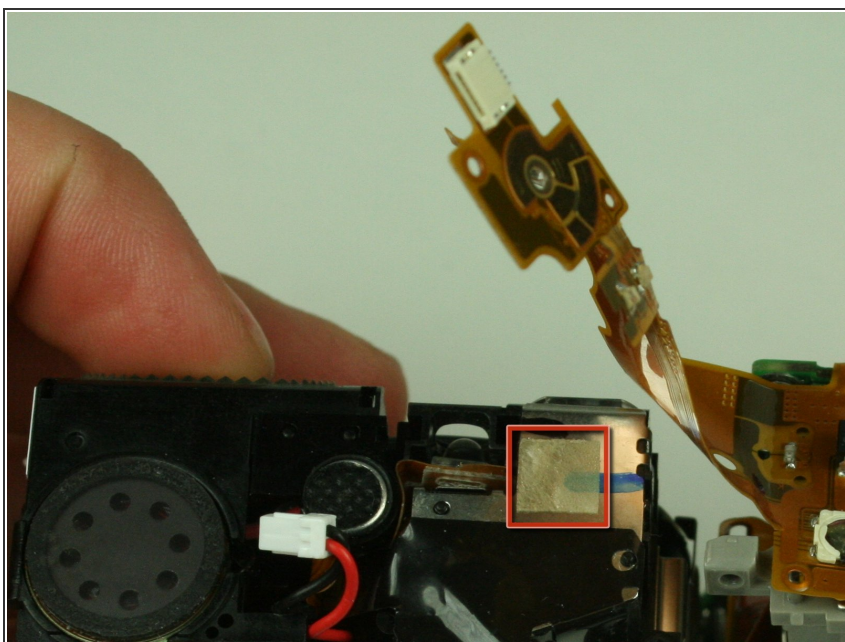
## Step 17



- Orient the camera so you are looking at the top.
- Locate the white connector that attaches the flex circuit to the capacitor.
- ⓘ You may have to pull the connector out of a small space behind the flash bulb in order to access it.
- Disconnect the connector.

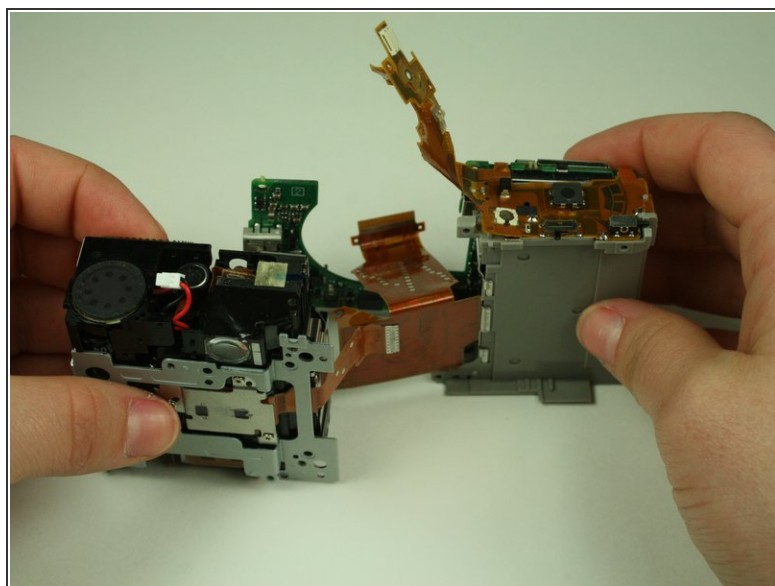
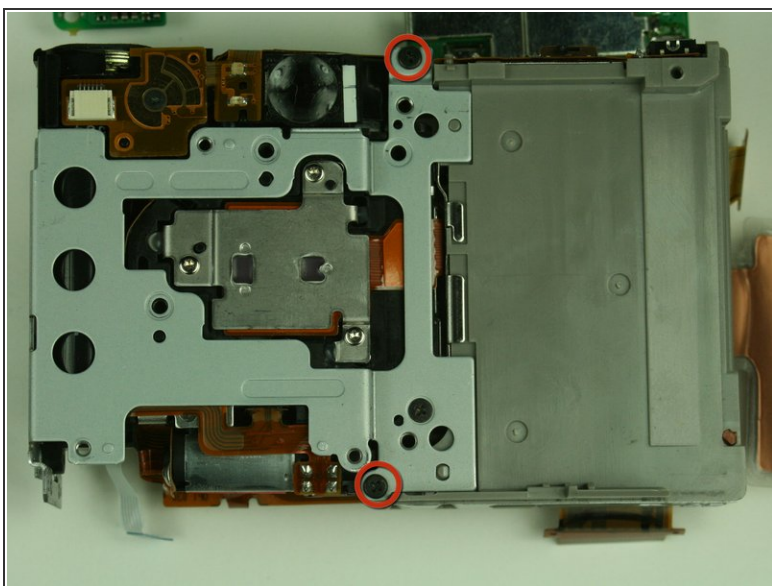


## Step 18



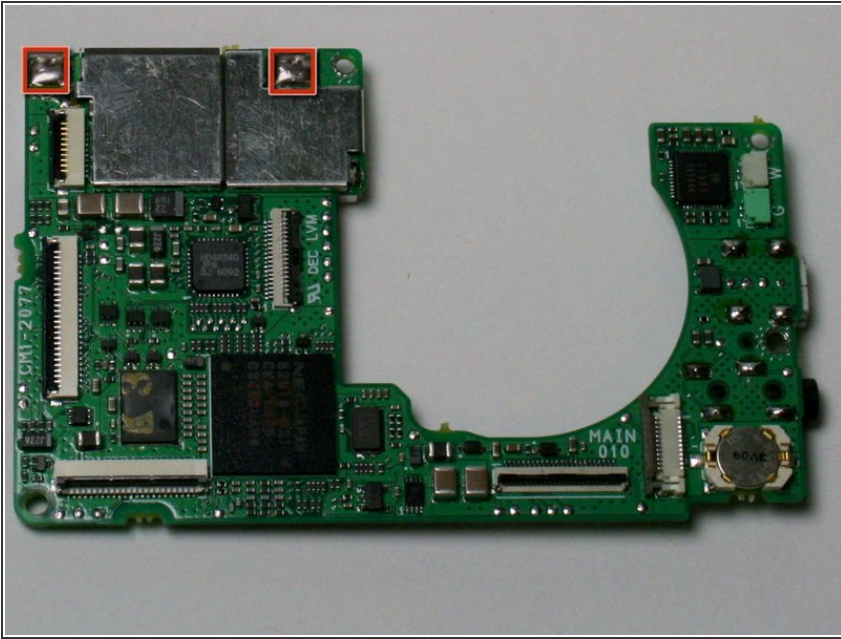
- Adhesive tape attaches the flex circuit to the top of the camera. Gently un-stick the flex circuit from the tape, but do not completely remove the flex circuit.

## Step 19



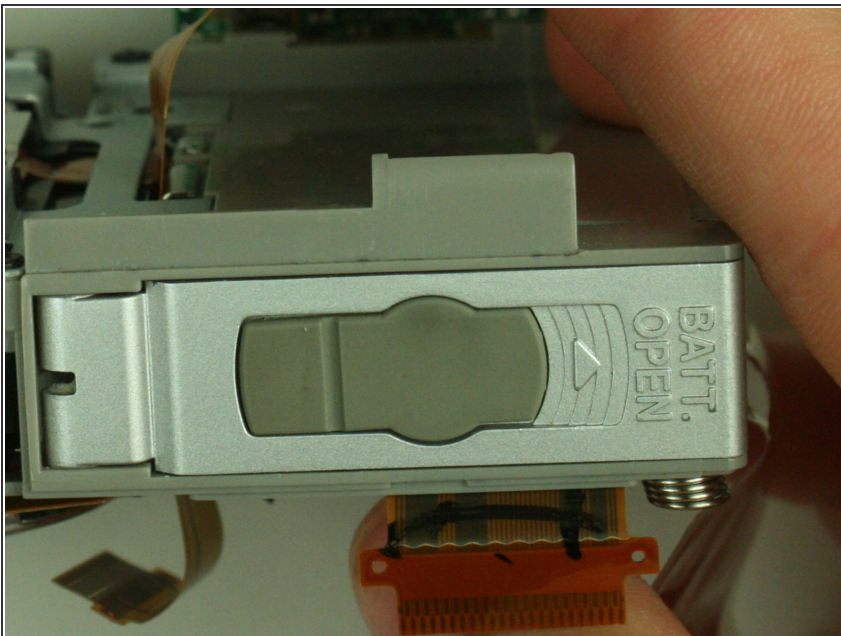
- Remove the two 3.45mm screws located on the backside of the camera.
- Separate the battery compartment and the lens-flash assembly.

## Step 20



- Set the lens-flash assembly aside.
- ⚠ The next step requires the use of a soldering iron. Do not perform this step if you do not have experience soldering, you could permanently damage the mother board
- De-solder the two soldered ribbon cables attached to the motherboard.
- Separate the motherboard and battery case.

## Step 21



- Replace battery casing

To reassemble your device, follow these instructions in reverse order.