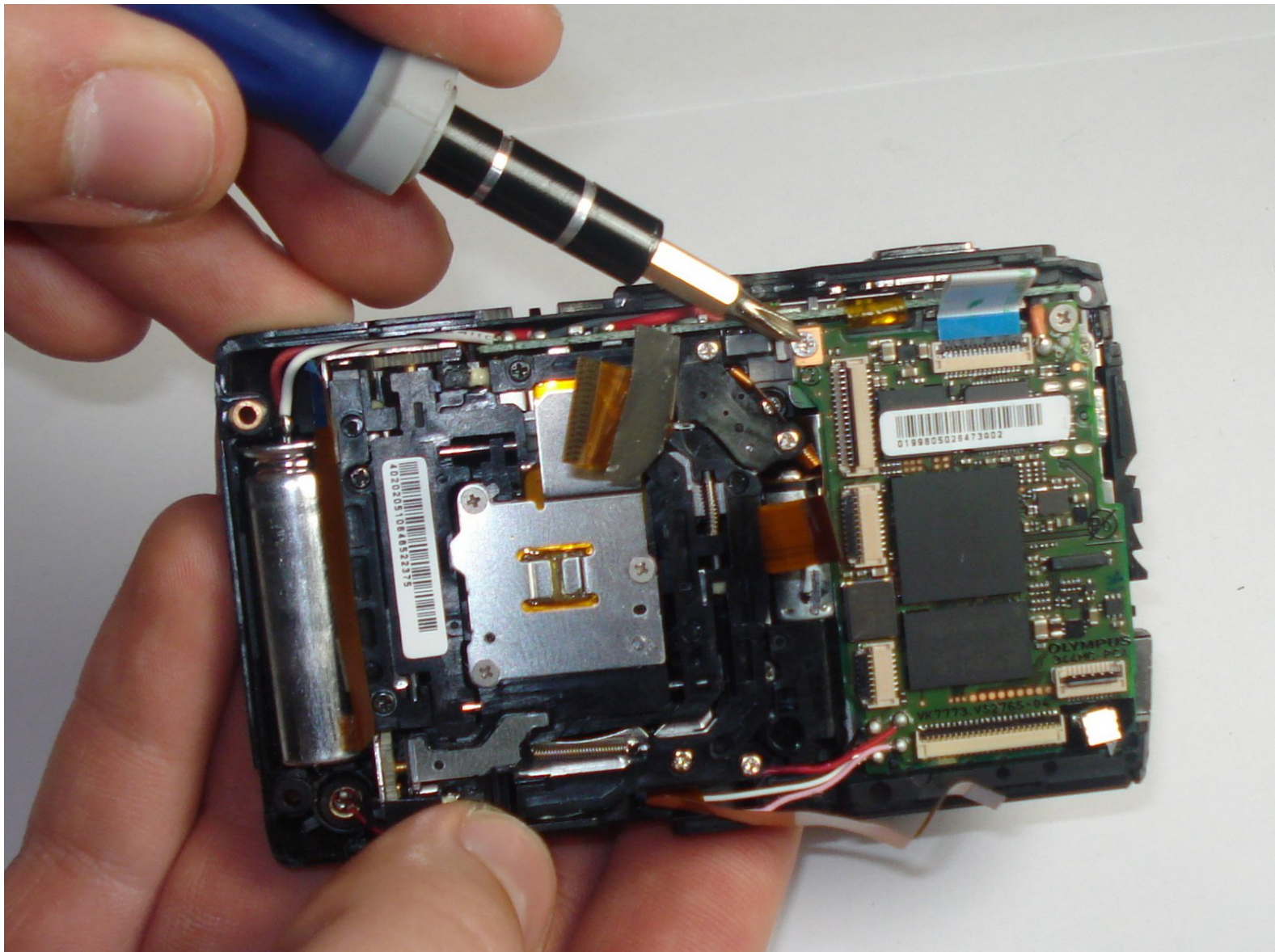




# Olympus Stylus 1010 Motherboard Replacement

How to replace an Olympus Stylus 1010 motherboard.

Written By: Max McIntyre





## TOOLS:

- [Phillips #00 Screwdriver](#) (1)
-

## Step 1 — Disassembling Olympus Stylus 1010 Case



- Remove the five Phillips #00 bottom and right side panel screws.

## Step 2



- Remove the right side panel by pulling off the large silver piece.

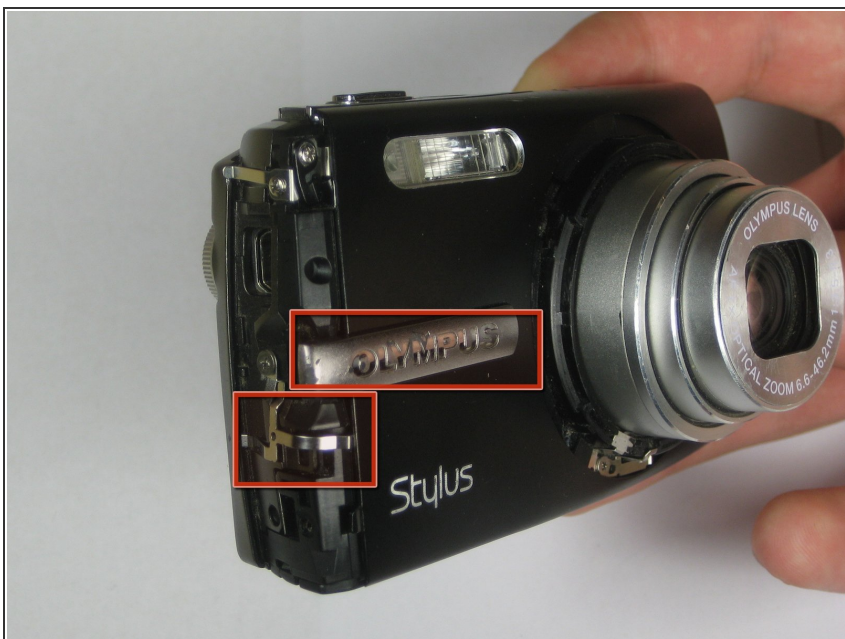


### Step 3



- Remove the remaining three Phillips #00 side and front panel screws.

### Step 4



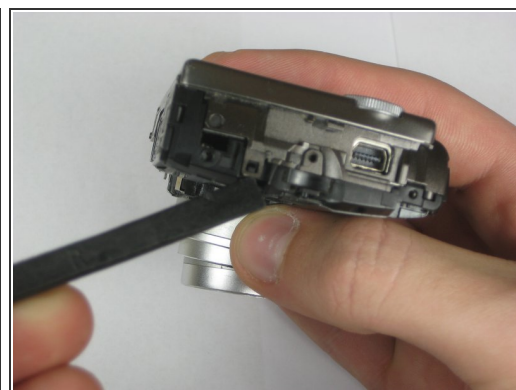
- Using your thumb and forefinger, pull off the silver name plate and silver "T-shape" piece.

## Step 5



- Remove the black front panel by sliding it towards the lens and then pulling it up off of the camera.

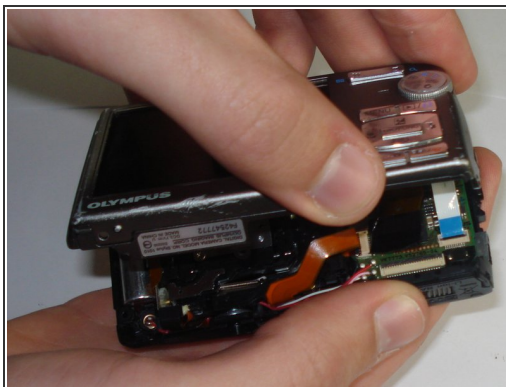
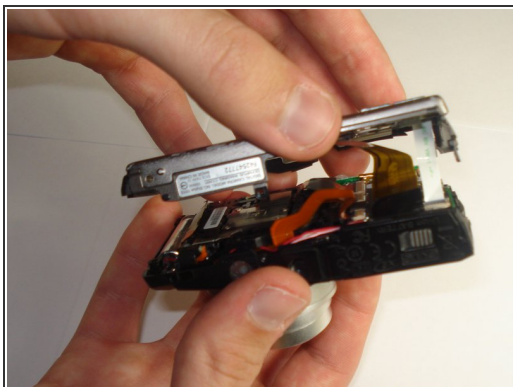
## Step 6



- Remove the three Phillips #00 screws from the front of the camera.
- Using a spudger, lift the two tabs to separate the case—one tab on top and one tab on the right side.

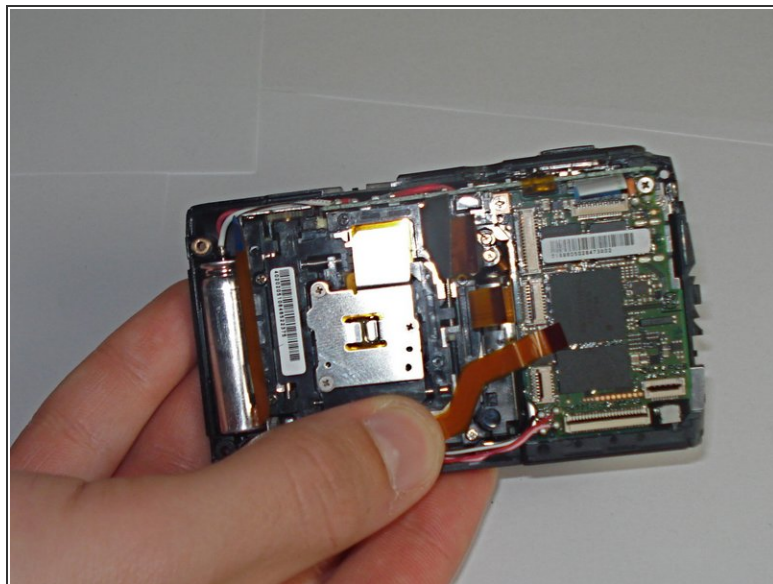


## Step 7



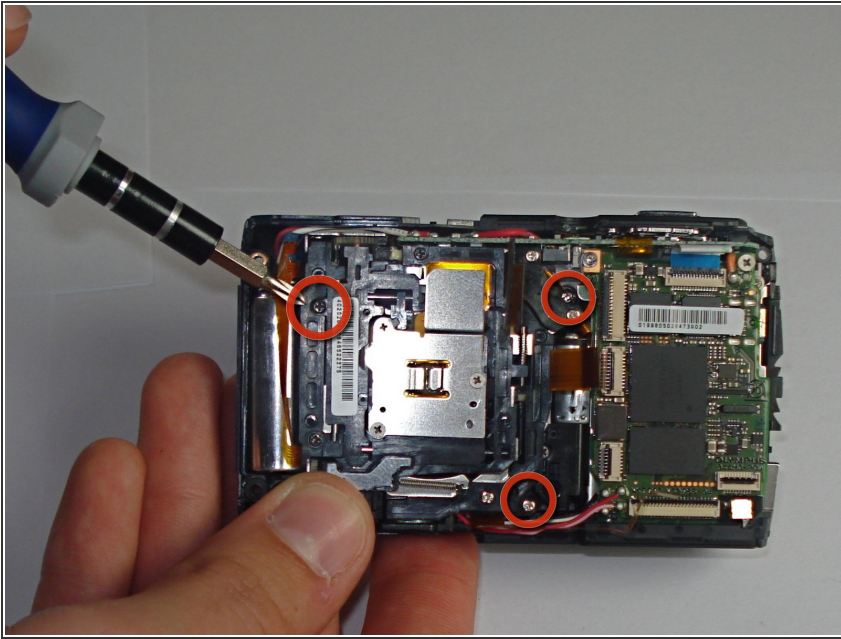
- Using a plastic spudger, lift up the black clips.
- Still using the plastic spudger, detach the gold connector strip and white connector strip.
- Using both hands, pull the camera apart into two pieces.

## Step 8 — Lens



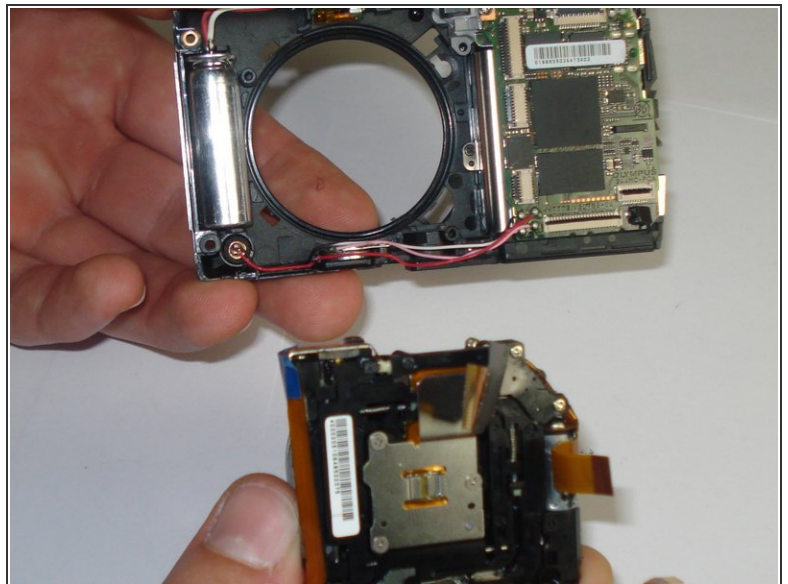
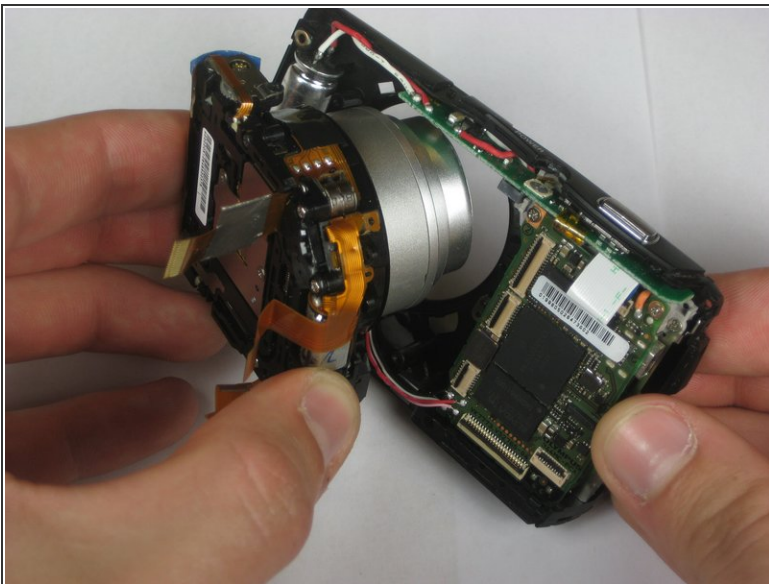
- Using a plastic spudger, lift up the black clips.
- Still using the spudger, detach the three gold wire tape connectors from the inside of the camera.

## Step 9



- Remove the three screws from the inside of the camera using a #00 screwdriver.

## Step 10



- Using your thumb and forefinger, pull the lens piece straight out from the body of the camera.



## Step 11 — Motherboard



- Remove the two Phillips #00 screws on the right side of the camera.

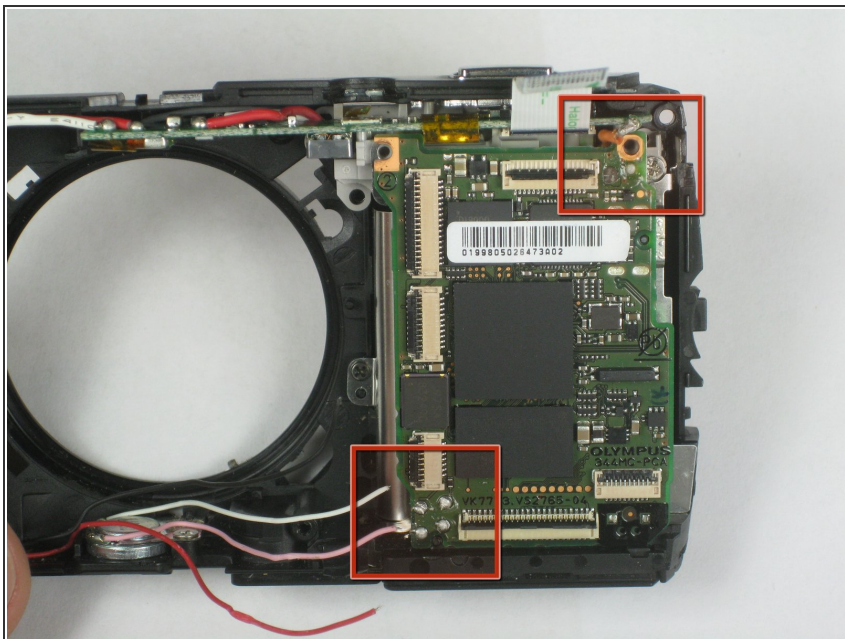
## Step 12



- Using a plastic spudger, lift up the black clips.
- Still using the spudger, detach the gold wire tape connectors from the motherboard.

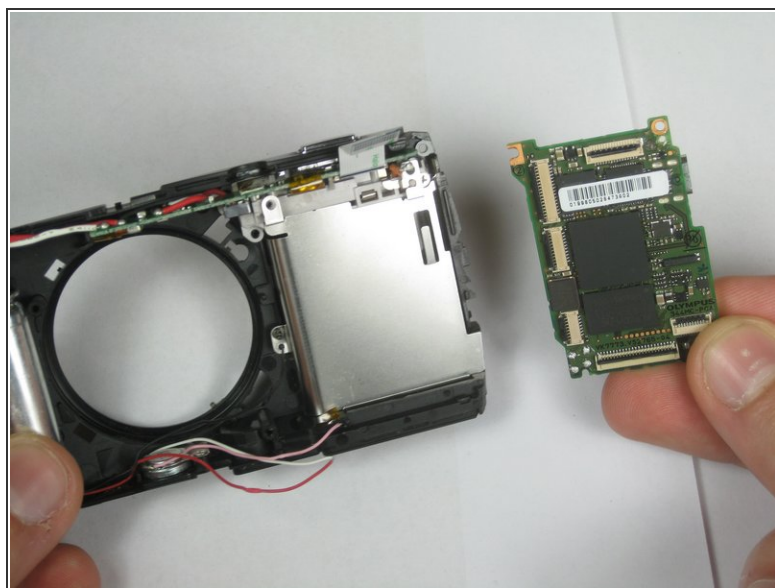
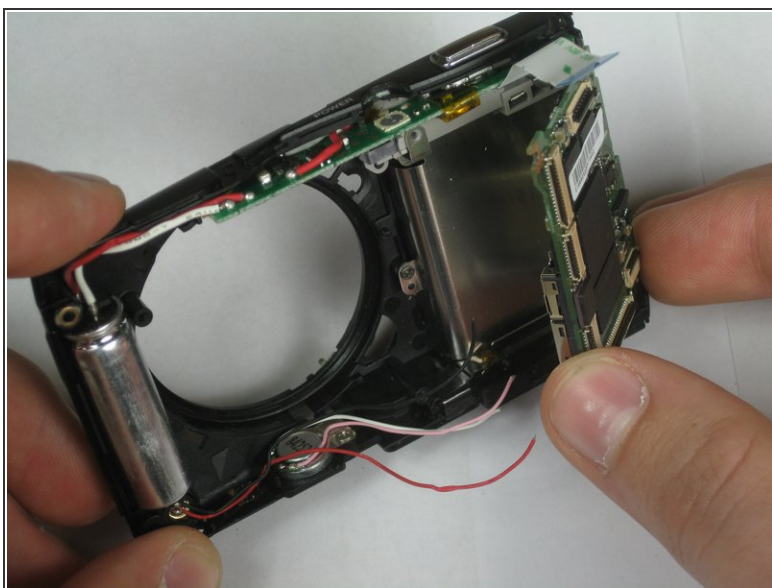


## Step 13



- Desolder the upper right and lower left wires to remove the motherboard.

## Step 14



- In order to remove the motherboard, grab each side of it and pull up using your thumb and forefinger.

To reassemble your device, follow these instructions in reverse order.

This document was generated on 2020-11-19 01:21:18 AM (MST).

