



Sony Ericsson W200i Speaker Replacement

Replacing the speaker of the Sony Ericsson W200i.

Written By: Andy Whitmyre



INTRODUCTION

Replacing the speaker is pretty simple, just be sure to keep track of all of the parts.



TOOLS:

- [iFixit Opening Tools](#) (1)
 - [T6 Torx Screwdriver](#) (1)
 - [Tweezers](#) (1)
-

Step 1 — Disassembling Sony Ericsson W200i Battery



- Slide the battery cover up and off the phone.

Step 2



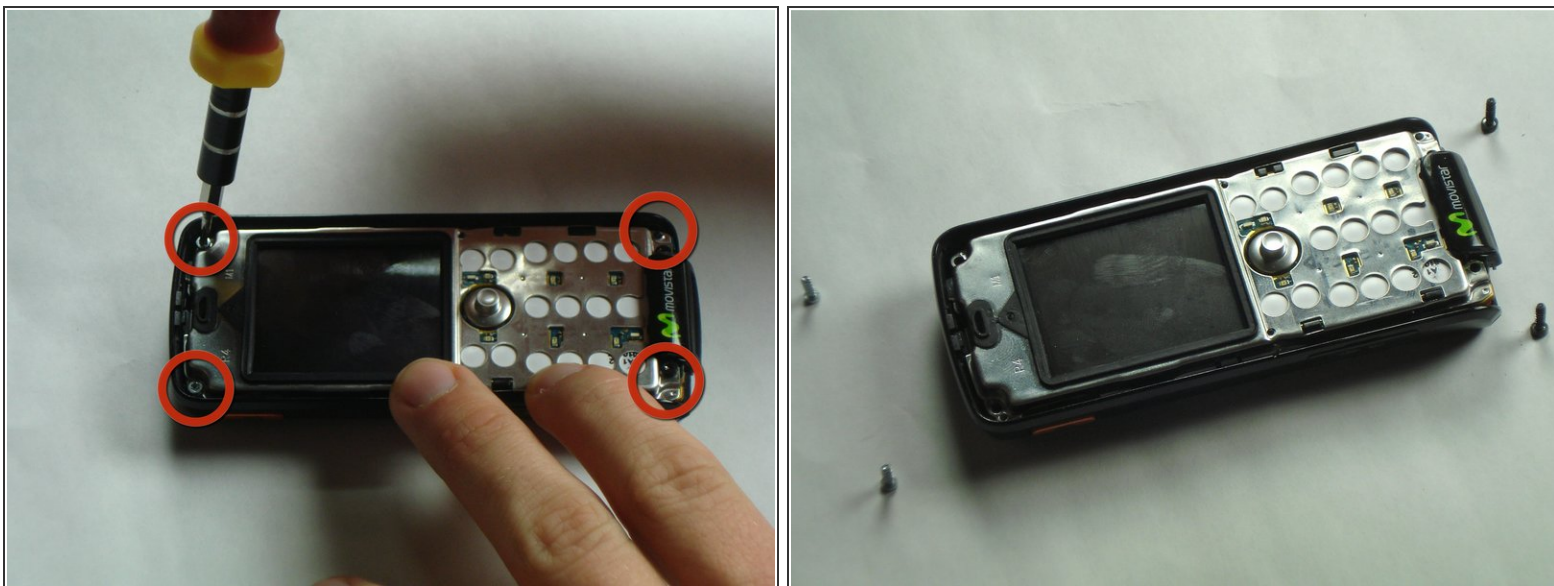
- Pop the battery out of its slot by lifting it up.

Step 3 — Front Case



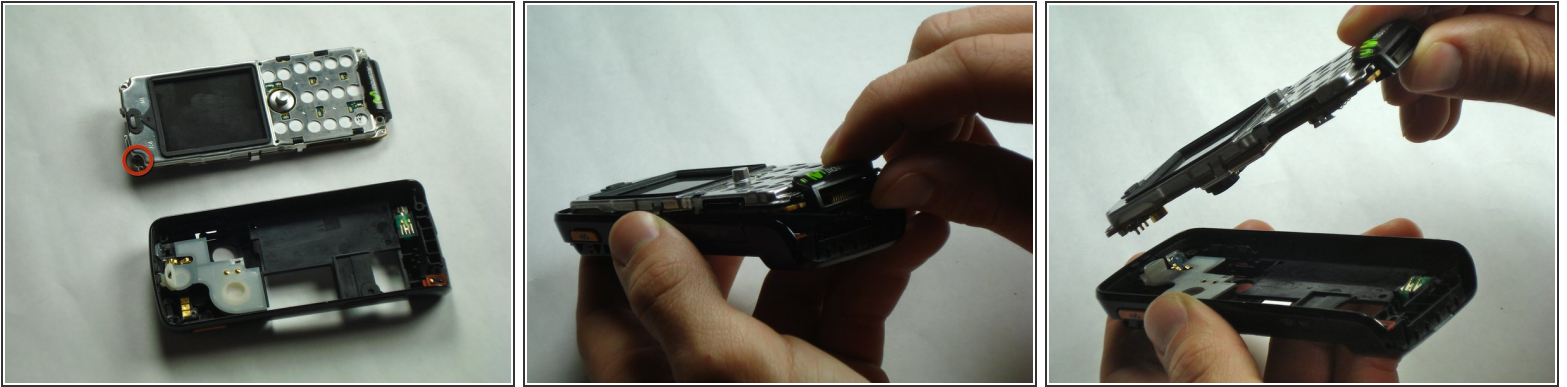
- Insert the plastic opening tool in between the front case and the back case.
 - Apply downward pressure to make the case lift upwards, thus popping the front case off.
- ⚠ Use caution when removing the front case. It may seem stuck but just ease it out.

Step 4 — Core



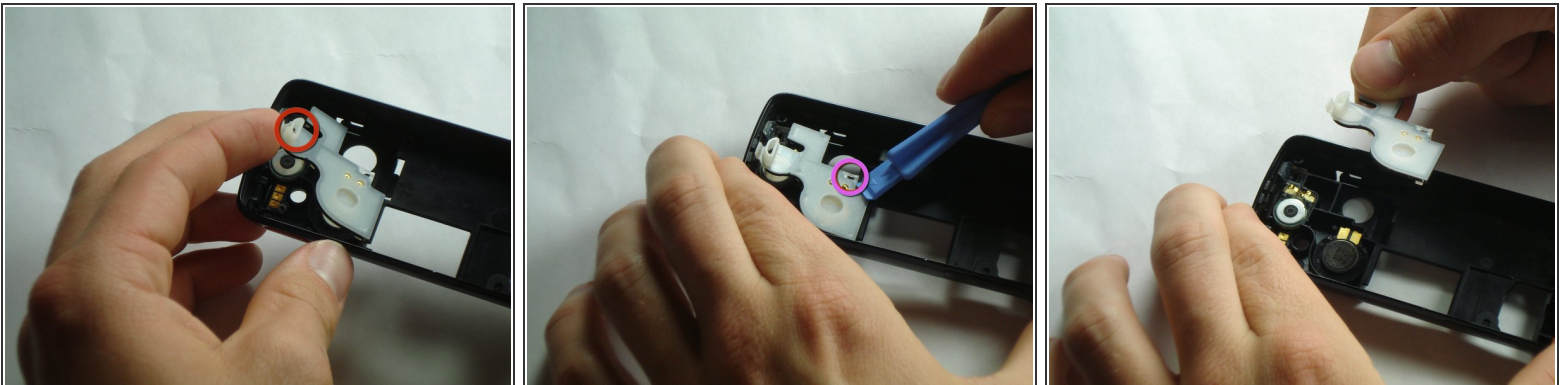
- Remove the 4 screws in the corners of the front of the phone using a T6 screwdriver.
- ⓘ Note that the top 2 screws are silver and the bottom 2 screws are black.

Step 5



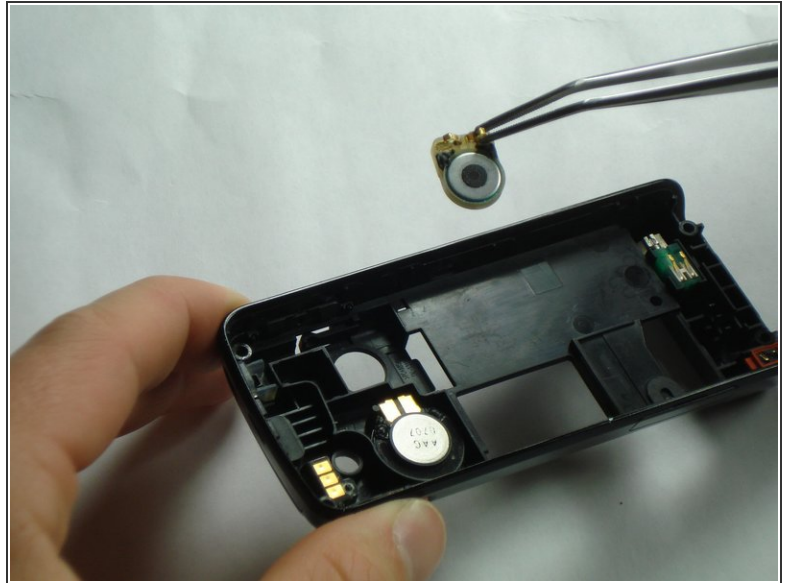
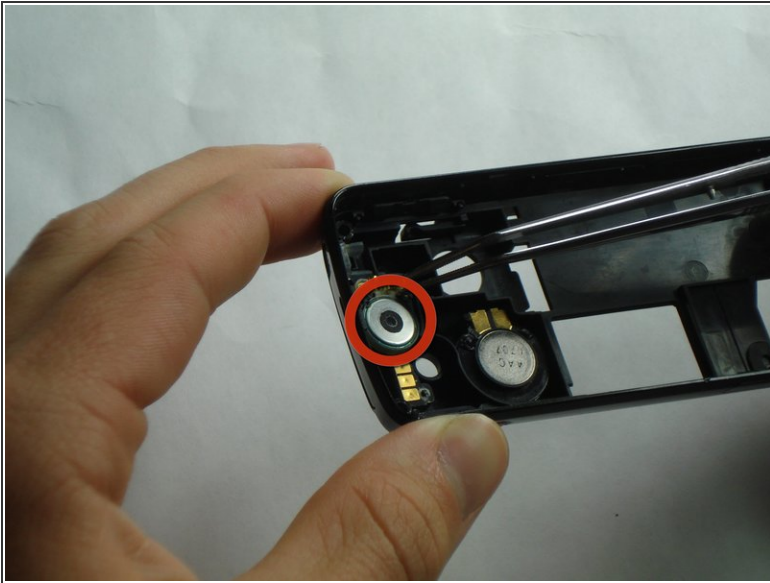
- There is a black tab in the top left corner holding the core in place.
- Remove the core by pulling straight up to prevent breaking the tab.

Step 6 — Back Case



- Pull back on the indicated tab of the white plastic cover to unhook it from the top of the phone.
- Using the plastic opening tool, undo the indicated clip on the bottom of the white plastic cover.
- Remove the white plastic cover.

Step 7 — Speaker



- Remove the speaker by pulling it up and out of place with the tweezers.

To reassemble your device, follow these instructions in reverse order.