



# PSP 300xc UMD Brace Replacement

Replacing the UMD brace in a PSP 300xc

Written By: Matthew Newsom



# INTRODUCTION

Has the metal brace in your UMD drive broken? Follow this guide to replace it!



## TOOLS:

- [Phillips #00 Screwdriver](#) (1)
- [Spudger](#) (1)



## PARTS:

- [Sony PSP 2000/3000 UMD Brace](#) (1)

## Step 1 — Battery



- Press the button securing the battery door to the PSP 300xc, and lift the battery door off.
- Lift the battery out of the PSP.

## Step 2 — Front Case



- Use a spudger or your fingernail to remove the warranty sticker stuck to the inside of the battery tray

## Step 3



- Remove four Phillips screws from the back of the PSP.

## Step 4



- Remove two Phillips screws from the top of the PSP.



## Step 5



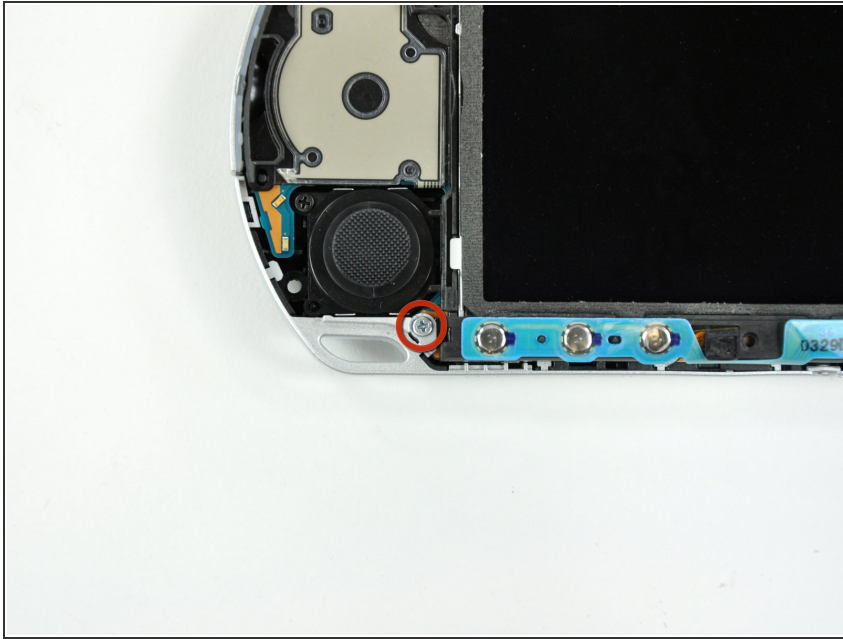
- Remove a single screw from the bottom edge of the PSP.

## Step 6



- Insert a spudger between the front case and PSP, and slide the spudger along the perimeter of the front case to remove it.

## Step 7 — LCD



- Remove a single Phillips screw securing the home bar to the PSP 300xc.

## Step 8



- Push the home bar to the right about 1cm to release a tab, and begin to lift the right end of the home bar slightly.

⚠ Do not attempt to remove the home bar yet, it is still attached to the PSP 300xc.

## Step 9



- Insert a spudger under the LCD, beside the black plastic tab.
- Push the LCD to the left and pry up to release the left edge of the LCD from under the plastic tab.

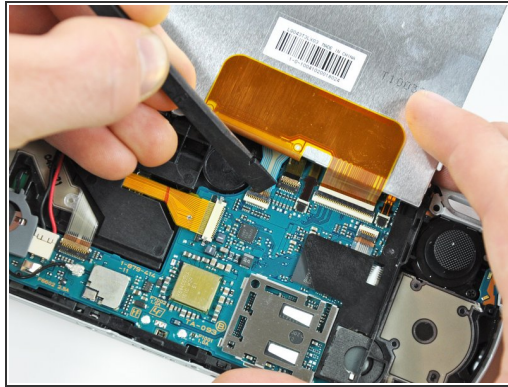
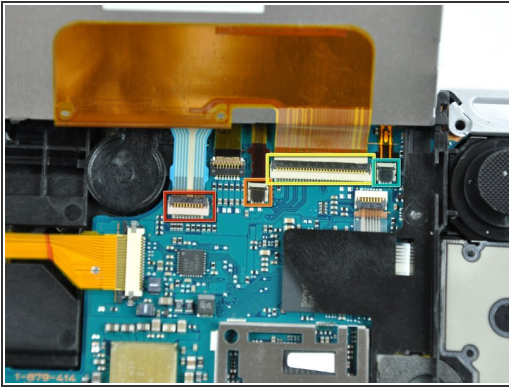
## Step 10



- Insert a spudger under the LCD, beside the black plastic tab.
- Push the LCD to the right and pry up to release the right edge of the LCD from under the plastic tab.



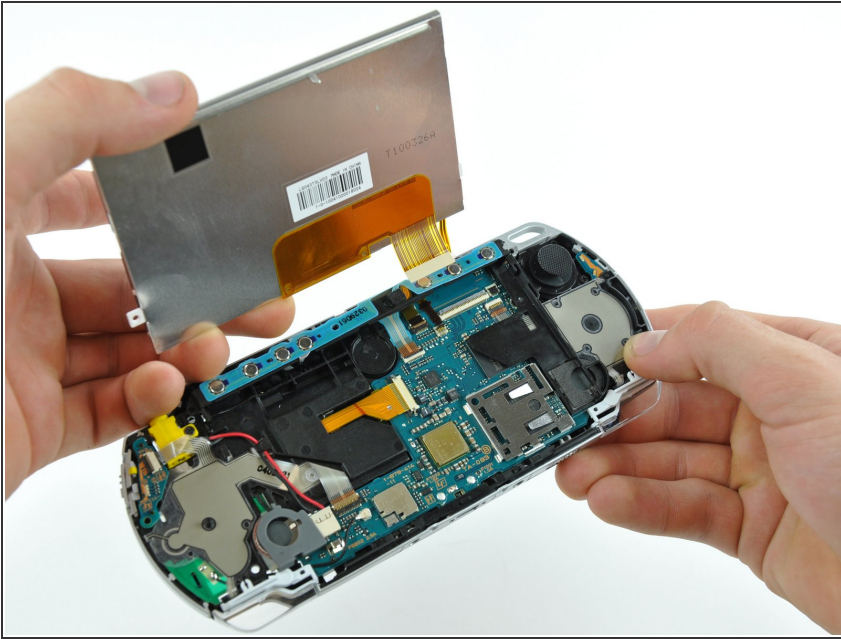
## Step 11



- Rotate the LCD away from the PSP to reveal the LCD and home bar ribbon cables.
  - Use your fingernail or the edge of a plastic opening tool to flip up the retaining flap on the following four ZIF connectors:
    - Home bar cable
    - Microphone cable
    - LCD display data cable
    - Touchscreen cable
- ⚠ Be sure you are prying up on the retaining flap, not the socket itself
- After flipping up the locking tabs on all four connectors, use your fingers or a spudger to gently pull the cables straight out of the connectors.

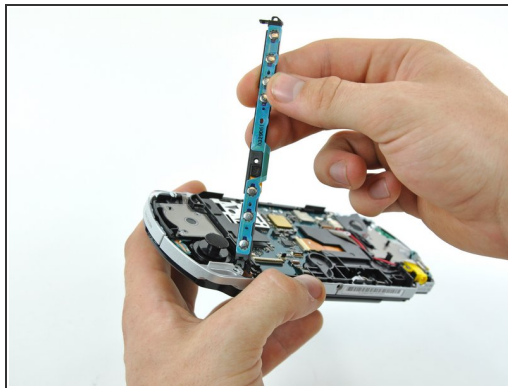
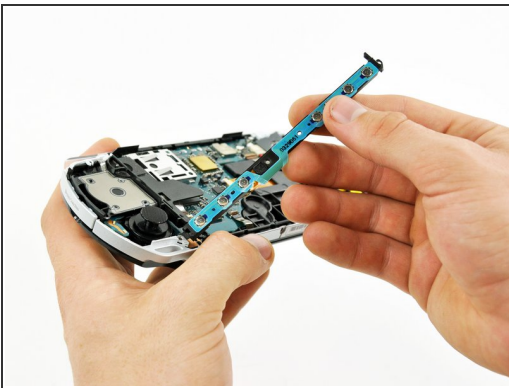


## Step 12



- Remove the LCD from the PSP 300xc.

## Step 13 — Home Bar

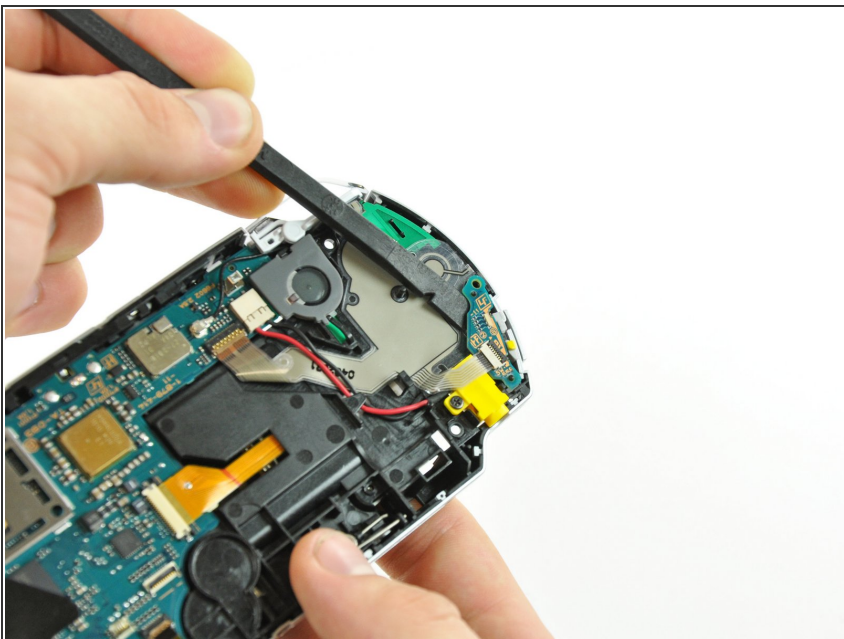


- Lift the home bar up as high as it will go, but not so high that the wires disconnect.

⚠ Try to bend the small tab under the silver rim as little as possible in the following steps. The more you bend, the more likely it will snap.

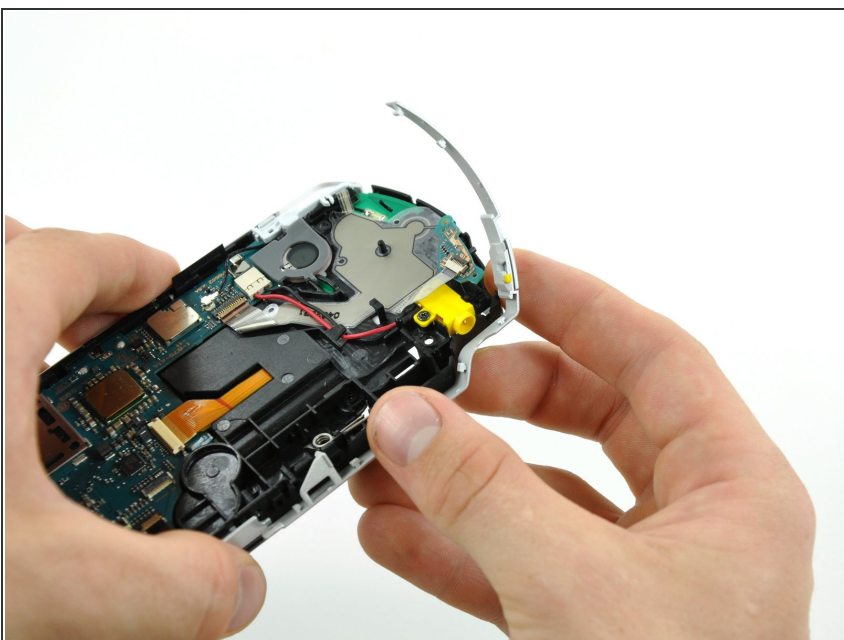
- Twist the home bar counter clockwise while carefully lifting it further. The left edge has to lift over the black plastic frame to allow it to rotate.
- The home bar should now lift out of the PSP 300xc.

## Step 14 — UMD Brace



- Using the flat edge of a spudger, pry the power board away from the PSP 300xc.

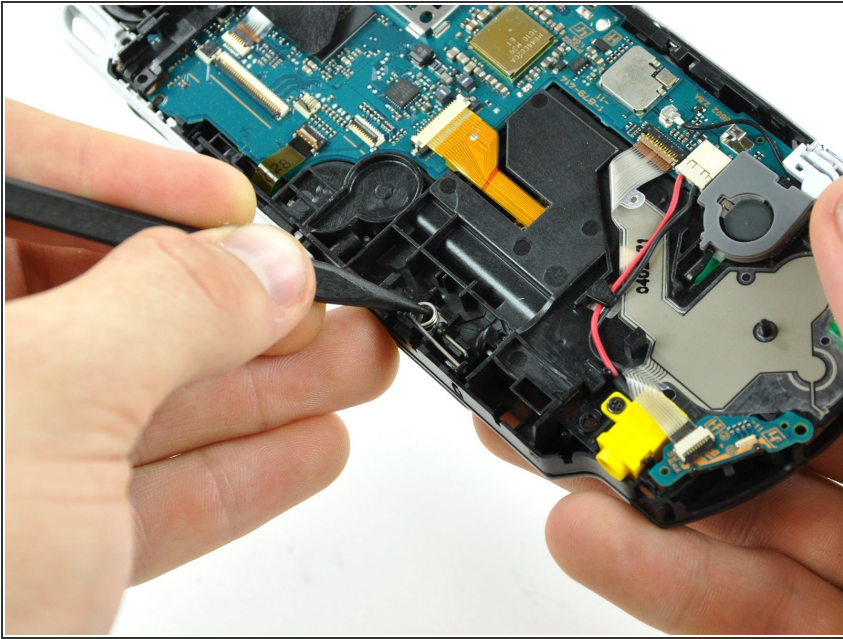
## Step 15



- Lift the right silver rim up and off the PSP 300xc.

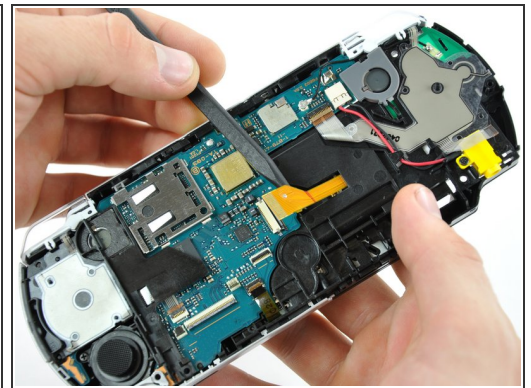
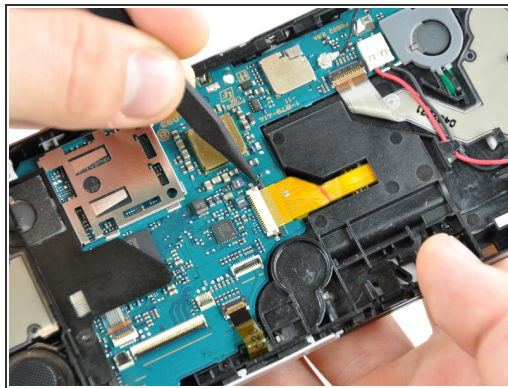
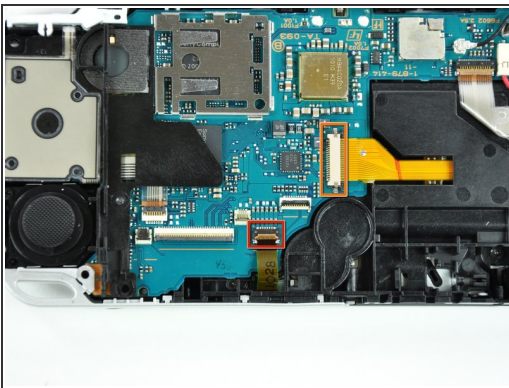


## Step 16



- Using the pointed end of a spudger, pull the UMD door spring to the left, and remove it from the PSP.

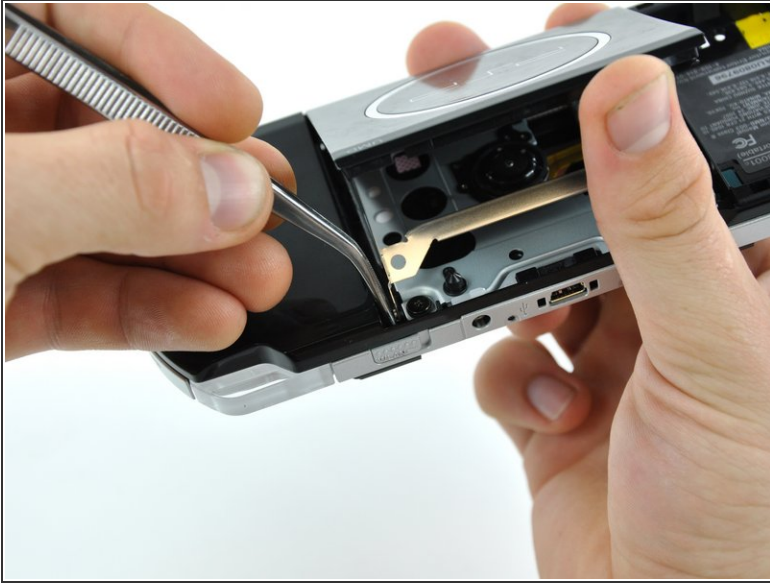
## Step 17



- Use your fingernail or the edge of a spudger to flip up the retaining flap on the UMD drive ribbon socket.
- ⚠ Be sure you are prying up on the retaining flap, not the socket itself
- Use your fingernail or tip of a spudger to push both sides of the black retaining flap on the UMD laser ribbon socket to the right.
- Use a spudger to gently pull both ribbon cables straight out of their sockets.



## Step 18



- Flip the PSP 300xc over and open the UMD door.
- Using a pair of tweezers, grab the small rubber square between the metal UMD brace and case, and lift it out of the PSP 300xc.
- Repeat for the rubber square on the other side of the UMD door.

## Step 19



- Slide the UMD brace toward the top of the UMD door until the brace disconnects from the door. Remove the brace.

To reassemble your device, follow these instructions in reverse order.