



# Canon EF 24-105mm F4.0 L IS - Err01 Flex Cable Replacement

The camera shows Err01 every now and then -...

Written By: jensloewe



# INTRODUCTION

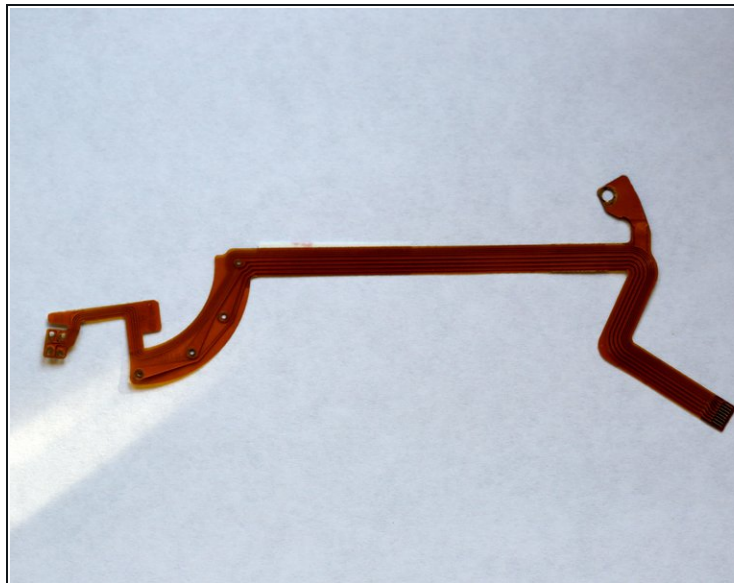
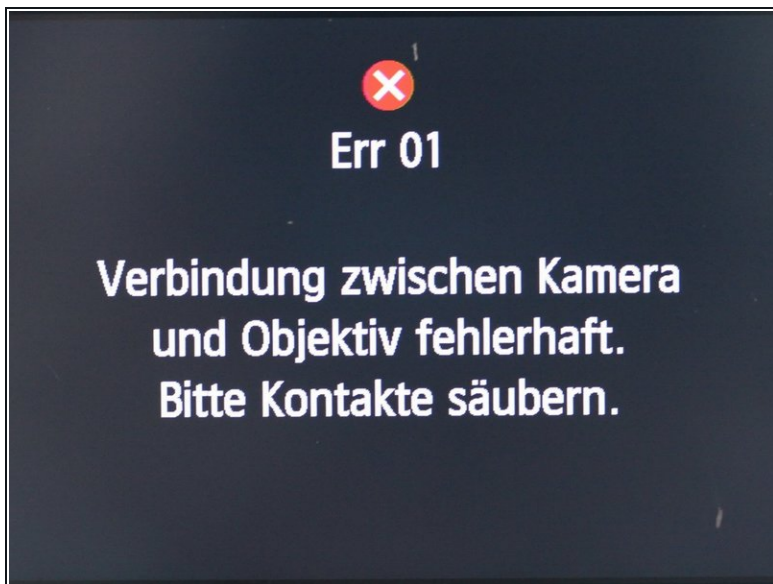
The camera shows Err01 every now and then - Connection between camera and lens faulty. Please clean the contacts. In most cases, a conductor path in the lens is broken.

## TOOLS:

[Essential Electronics Toolkit](#) (1)

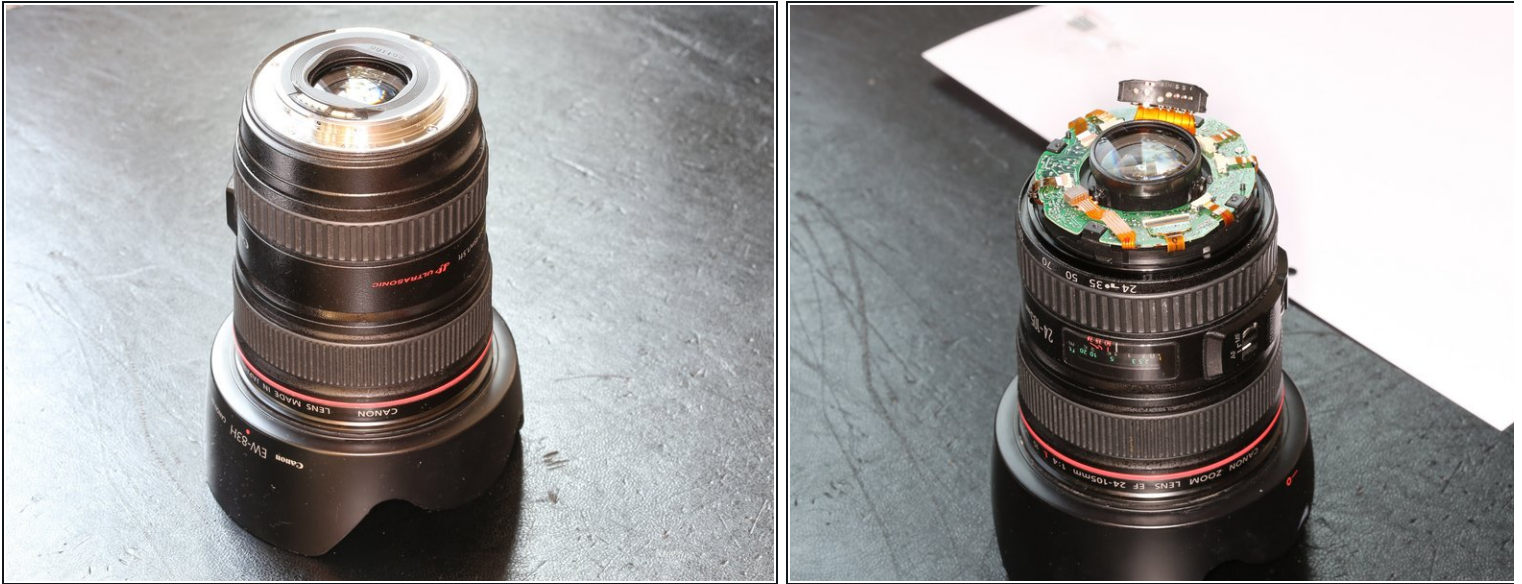
[Soldering Iron](#) (1)

### Step 1 — Flex-Cable Aperture - Aperture Flex



- Here is the problem with this camera and the needed replacement part is shown.

## Step 2 — Remove bayonet lock



- The bayonet lock is mounted with four little screws. Remove them and mark them (like all other screws) and put them aside
- The black insert is a plastic part and fixed with four clips from below. The most upper ring can be lifted a little bit on the opposite side of the contacts. By doing that, you can remove one or two clips from below to push out the black insert carefully.
  - Be especially carefully not to put too much tension on the flex-cable which connects the contact-strip with the PCB below!
- The contact-strip itself is fixed with two very tiny PH0-Phillips-screws from the outer side. Please remove both of them and put them aside



### Step 3 — Remove circuit board



- Now, remove all flex cables from the the PCB very carefully. There are several different ways of connections.
- remove the screw which holds the PCB in place and remove the board afterwards

### Step 4 — Removing assembly for scales



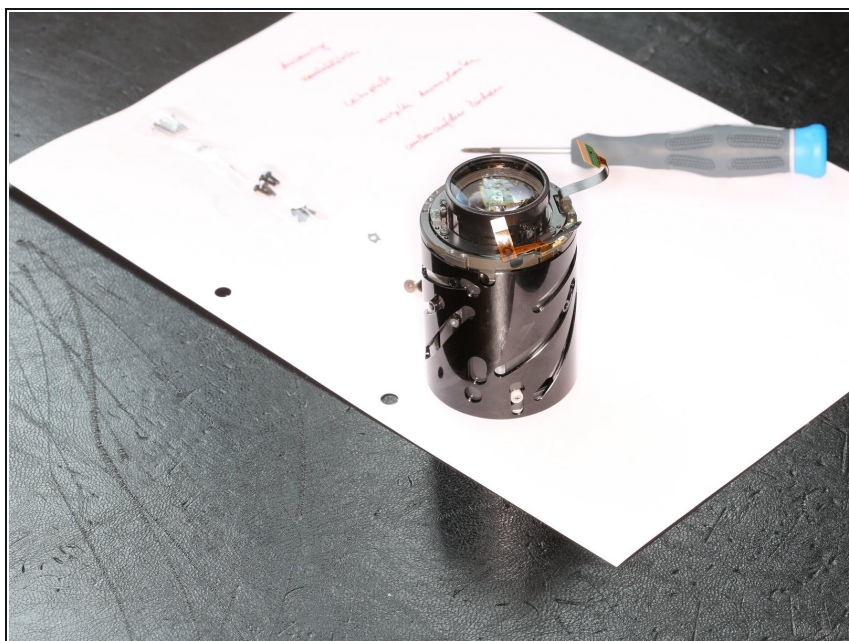
- now disassemble the assembly with the scale for focal length and distance.

## Step 5 — Remove Focus assembly



- now remove the assembly for the manual focus

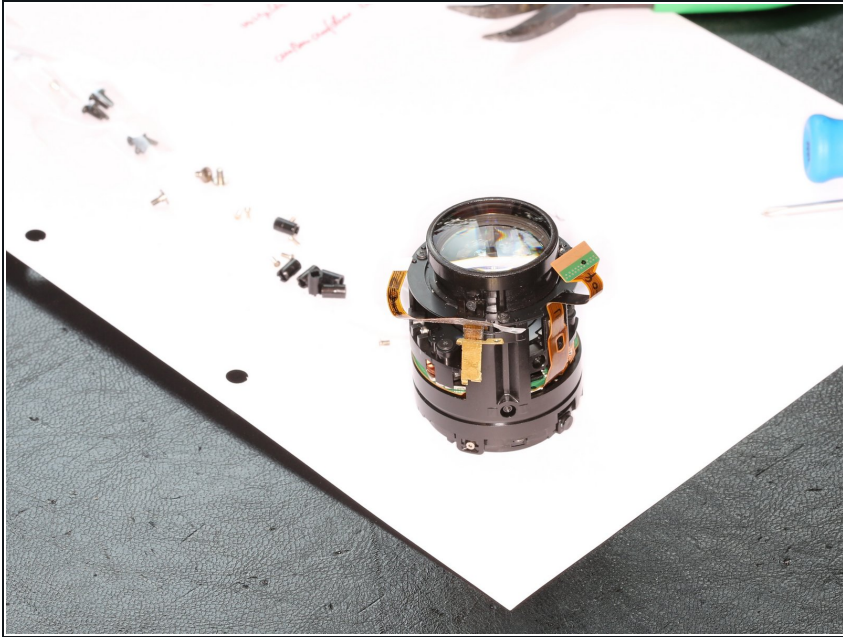
## Step 6 — Disassemble the cage



- now, it gets a little bit tricky: the rails of the "cage" are guided by little pins. These are individually sized

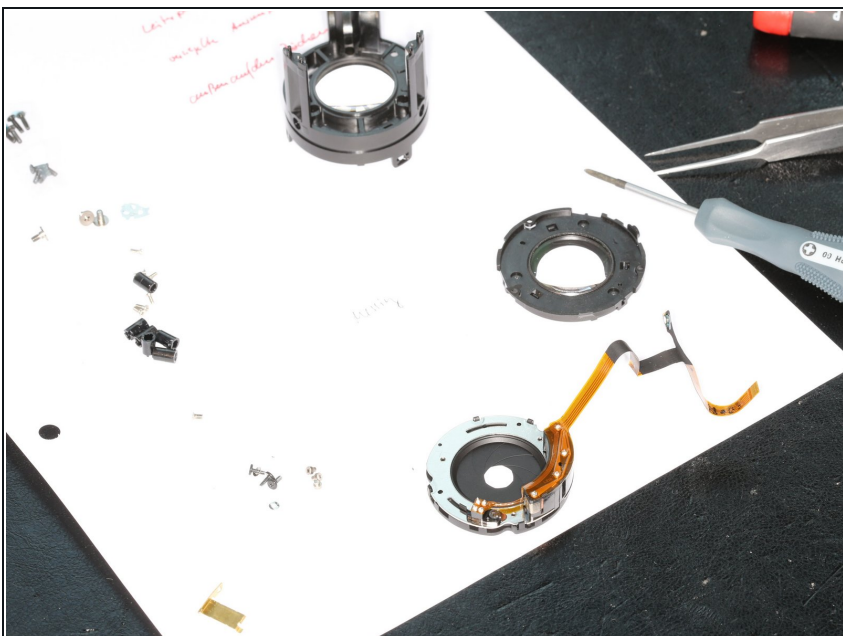
and have to go exactly where they were before. So be careful and document everything in detail

## Step 7



- Dismantle aperture plate and IS assembly

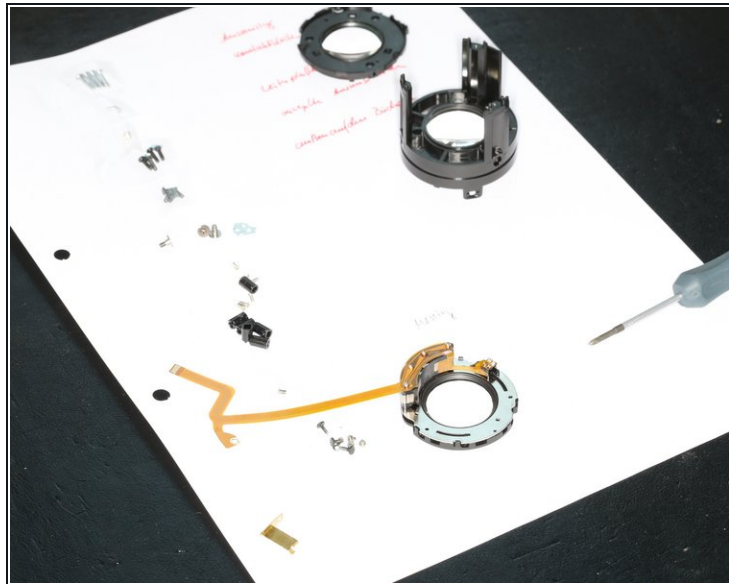
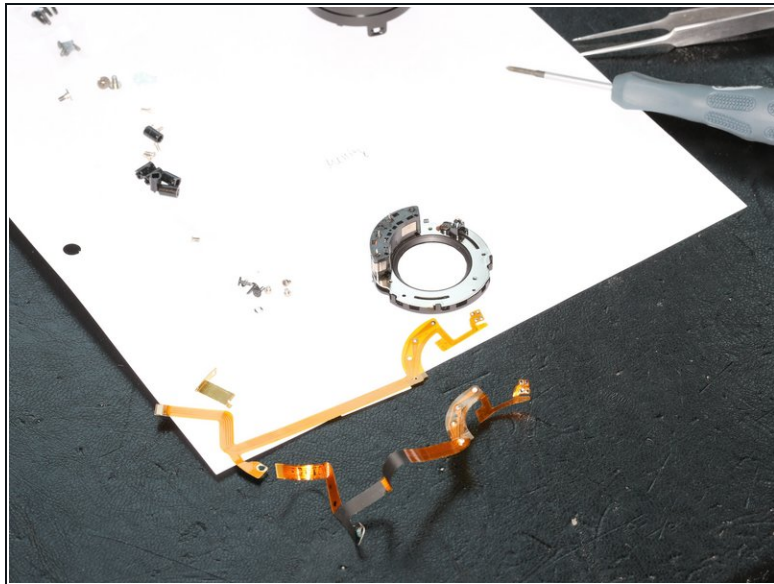
## Step 8



- Unsolder old flex cable for the aperture plate



## Step 9



- Resolder new cable for the aperture plate

Um Ihr Gerät wieder zusammenzubauen, befolgen Sie diese Anweisungen in umgekehrter Reihenfolge.