



# Disassembling Garmin Nuvi 1200 Logic Board

Removing the Logic Board from a Garmin Nuvi 1200

Written By: Zachary Landau



---

# INTRODUCTION

This guide shows how to fully disassemble a Garmin Nuvi 1200 to replace the logic board.

---



## TOOLS:

- [Spudger](#) (1)
  - [T5 Torx Screwdriver](#) (1)
-

## Step 1 — Logic Board



- Remove the sticker on the back of the unit and then remove the two T5 screws once this is done use a spudger to carefully pry off the silver cover.
- Once the tool is inserted it can slide around the entire device.

## Step 2



- Remove four small T5 torx screws.
- Be gentle, the screws are easily stripped.



### Step 3



- Lift cover off of unit.
- Be careful not to lose small rubber piece on the bottom right corner.

### Step 4



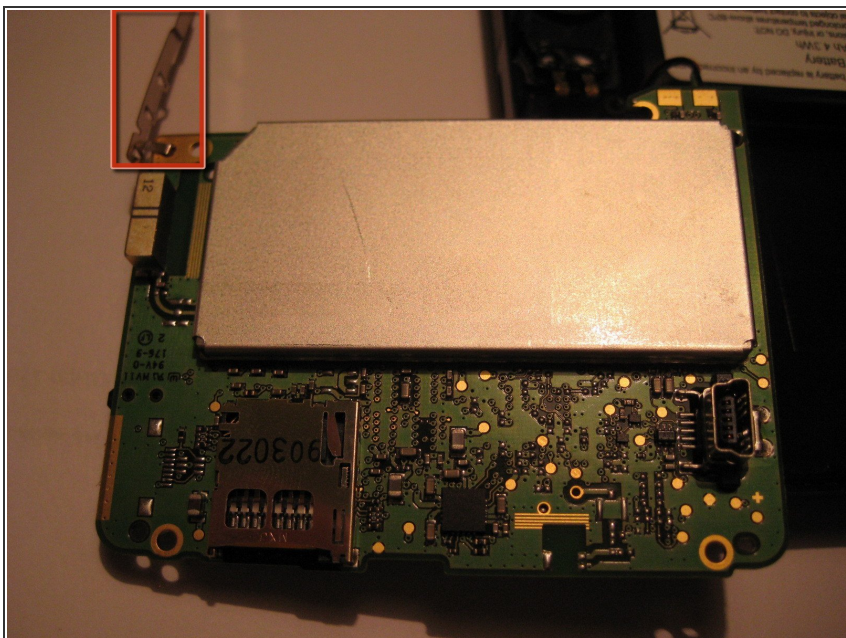
- Disconnect ribbon cable from logic board.

## Step 5



- Remove two T5 torx screws holding down logic board.
- Disconnect battery.

## Step 6



- Gently lift the logic board out of the unit
- Be careful not to damage the battery connector on the top of the unit.

To reassemble your device, follow these instructions in reverse order.