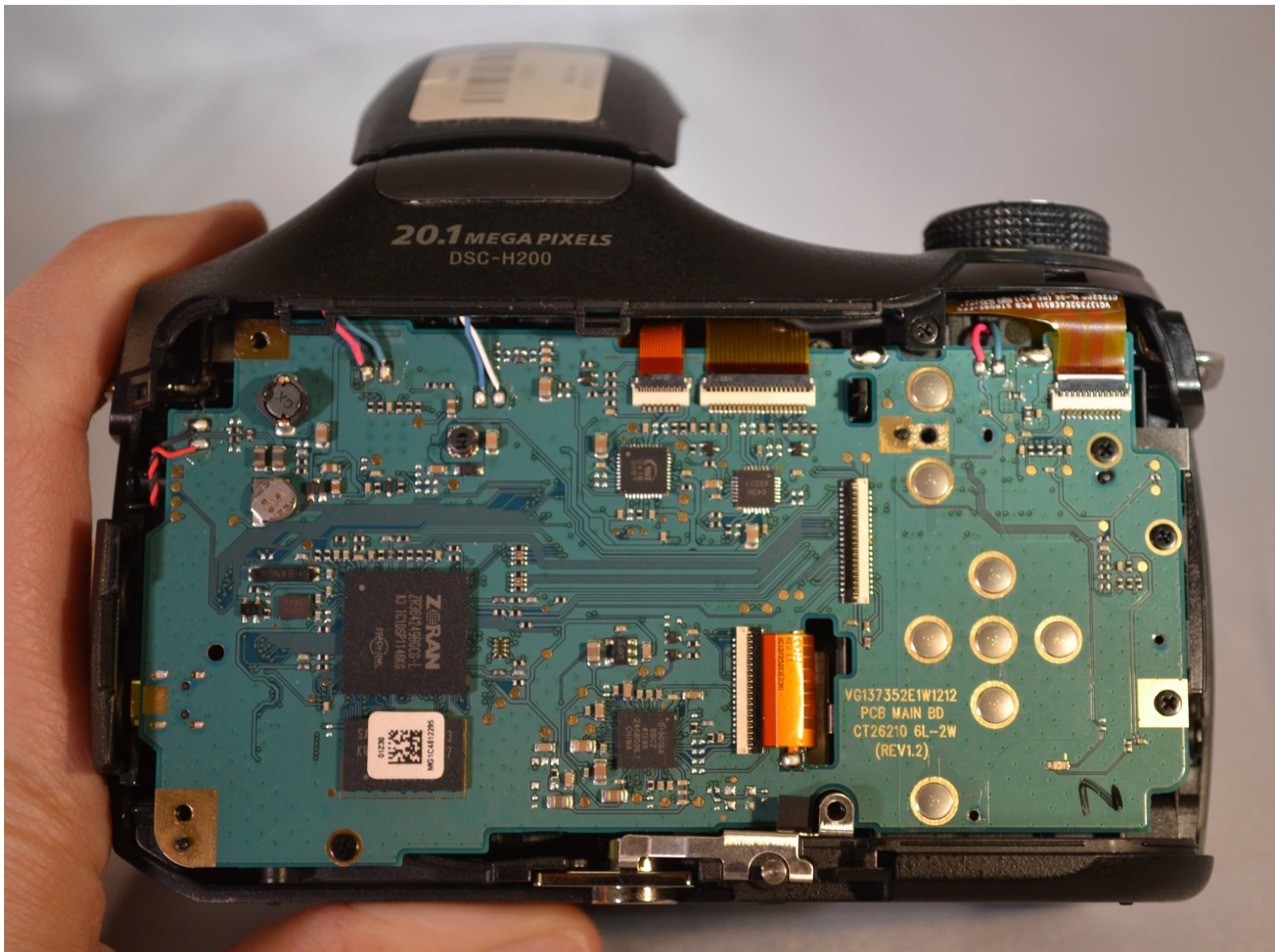




Sony Cyber-shot DSC-H200 Motherboard Replacement

To replace the motherboard correctly, users...

Written By: Faith Masiello



INTRODUCTION

To replace the motherboard correctly, users must get to the motherboard by first removing the LCD screen and metal plate behind it. To begin, please refer to the LCD Screen prerequisite guide to find the proper steps for the LCD removal process.



TOOLS:

- [Tweezers](#) (1)
 - [Magnetic Project Mat](#) (1)
 - [64 Bit Driver Kit](#) (1)
 - [Soldering Workstation](#) (1)
-

Step 1 — LCD Screen



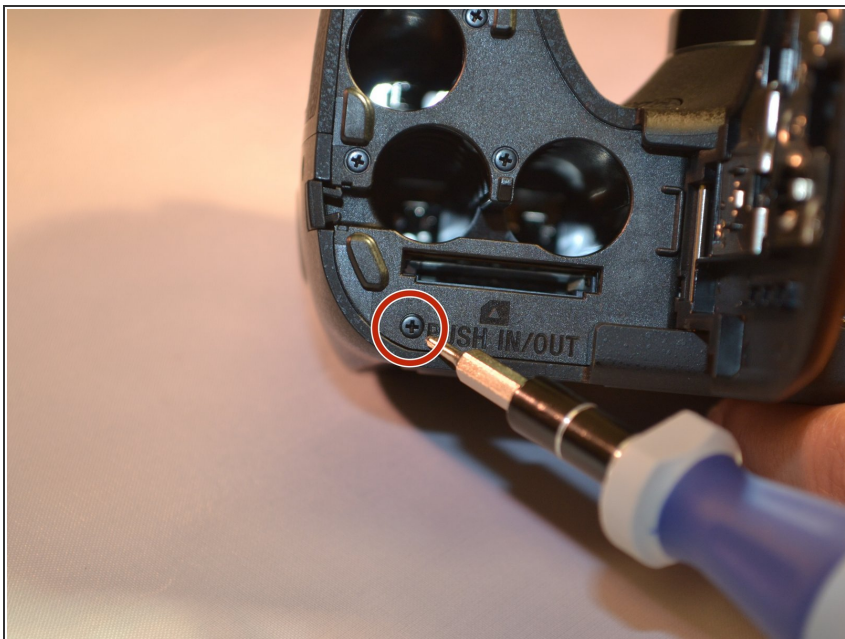
- Using a screwdriver, remove the five 6mm screws located on the back panel.
- Using a screwdriver, remove the two 3mm screws located on the back panel.

Step 2



- Using a screwdriver, remove one 6mm screw on the front panel.
- Using a screwdriver, remove two 3mm screws on the front panel.

Step 3



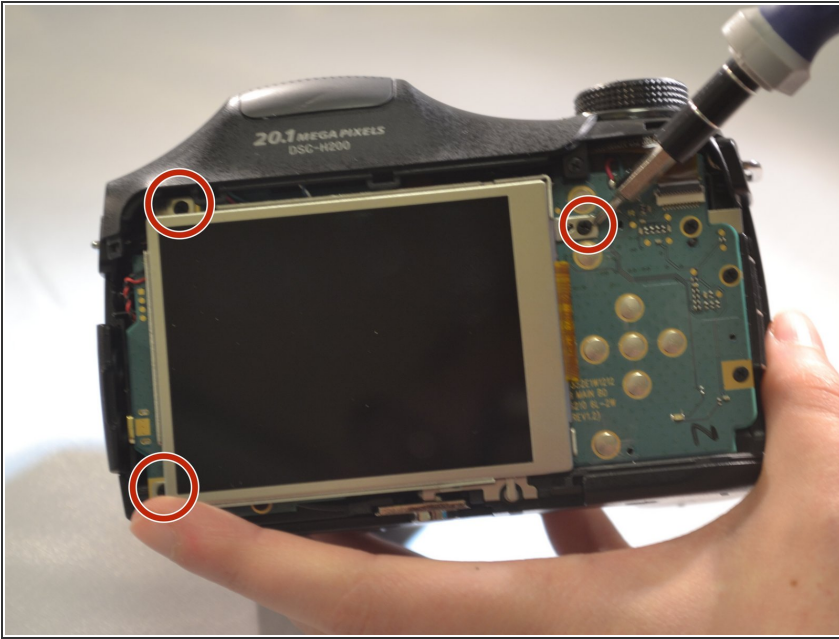
- Open the SD Door, unscrew and remove the single 6mm screw closest to "PUSH IN/OUT" under the SD card slot.

Step 4



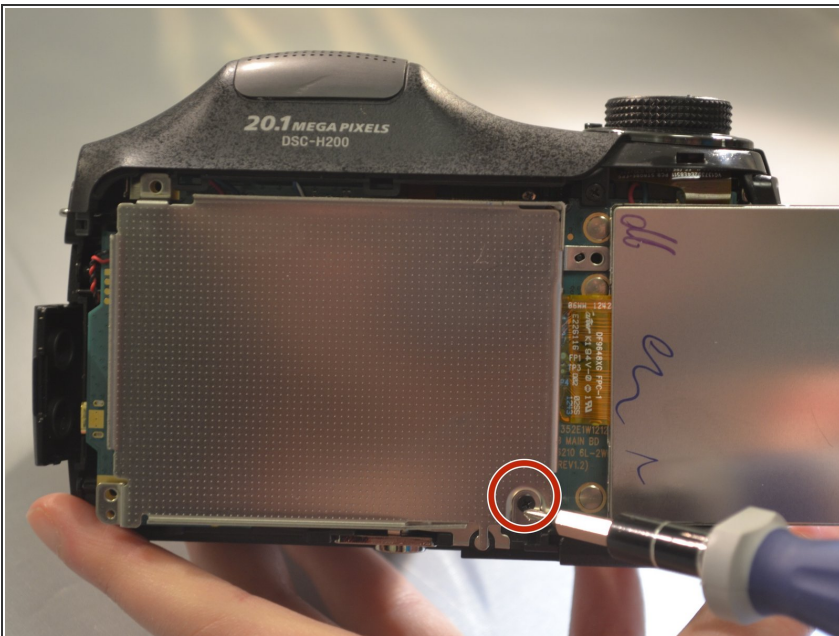
- Remove the back panel (the LCD and motherboard are exposed).

Step 5



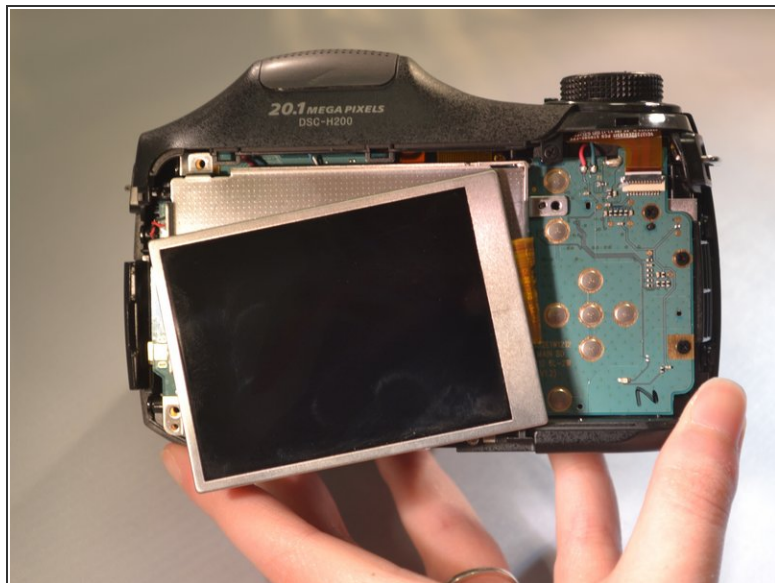
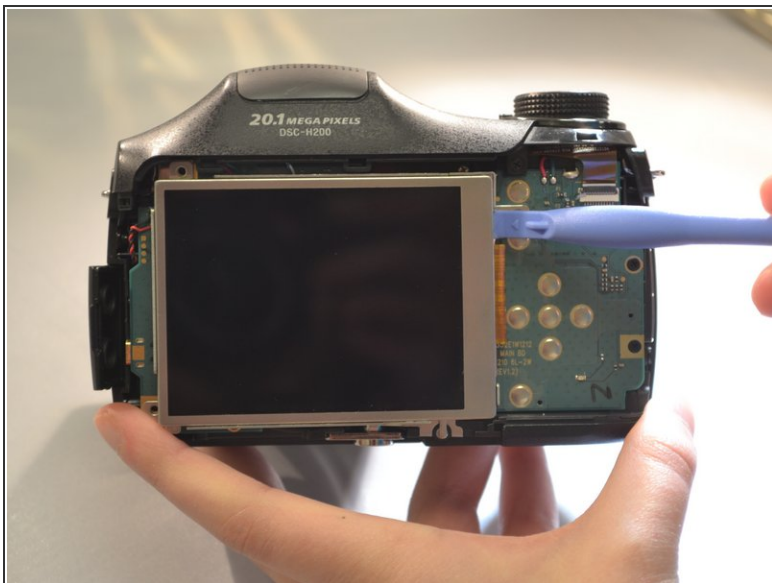
- Using a screwdriver, remove the three 4mm screws that attach the LCD to the camera motherboard. (The LCD is contained in a holding plate, attached to the motherboard with a ribbon cable.)

Step 6



- Using a screwdriver, remove the single 4mm screw at the bottom of the holding plate.

Step 7



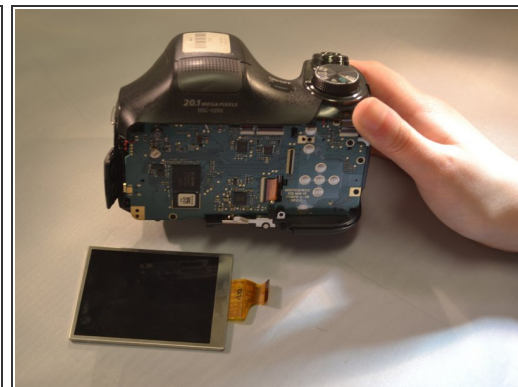
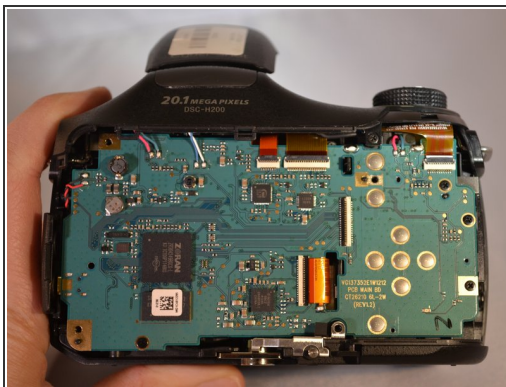
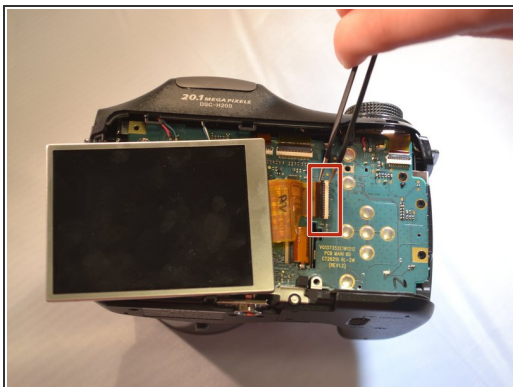
- Lift the holding plate away from the motherboard and set aside.

Step 8



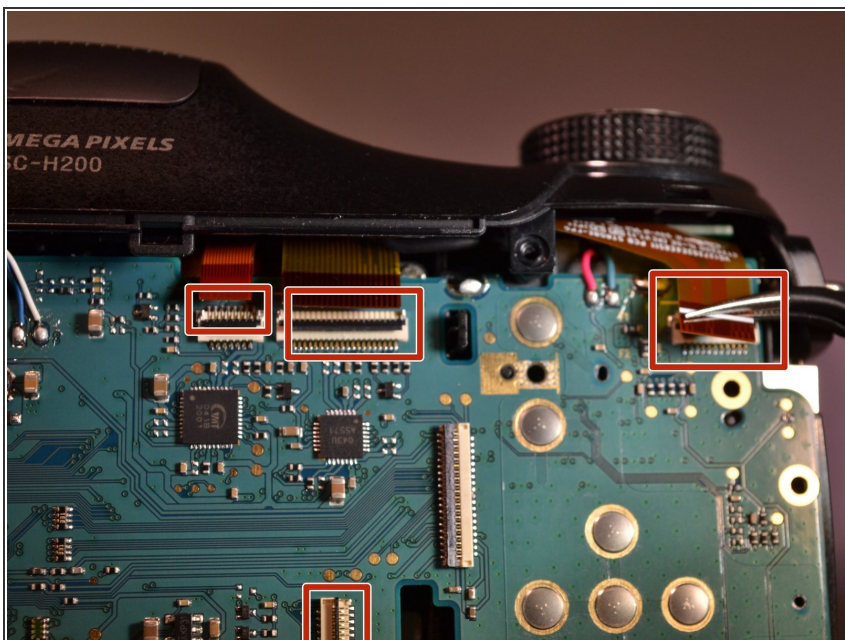
- Using tweezers, open the LCD ribbon port by lifting the black hinge. (The LCD ribbon cable will detach.)

Step 9



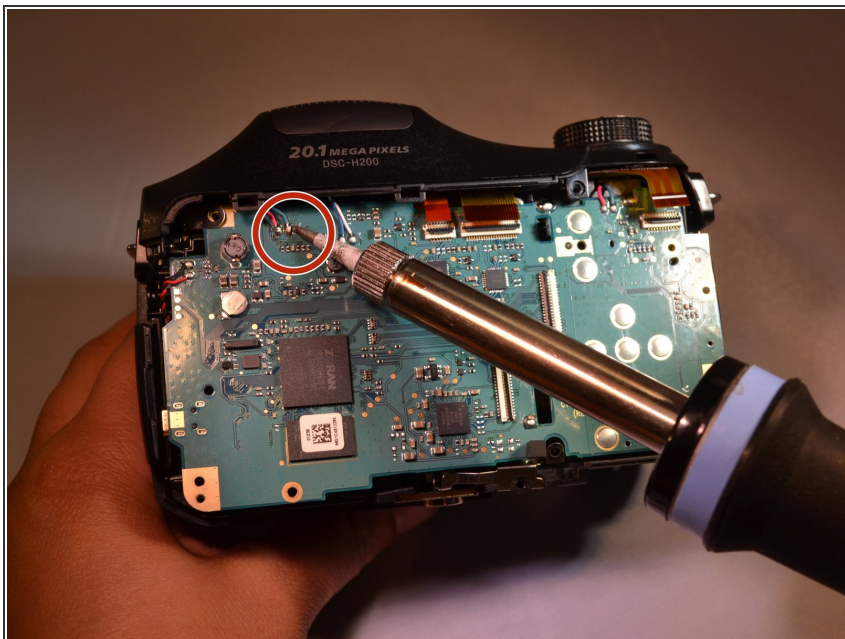
- Using tweezers, remove the LCD with the ribbon cable and set aside.

Step 10 — Motherboard



- Disconnect the four amber-colored ribbon cables from the motherboard using tweezers.

Step 11



- Disconnect all wires from the motherboard by using a soldering iron.
- ⚠ Users unfamiliar with a soldering iron should be extremely careful as the device can get very hot.

Step 12



- Gently lift the motherboard away from the camera body.

To reassemble your device, follow these instructions in reverse order.