



How to Reset the Rockwheel Electric Unicycle Mainboard

How to Reset the Rockwheel Electric Unicycle Mainboard

Written By: Zsolt Kovacs



INTRODUCTION

When one lifts GR16 from the ground, or fell from it on a way that the tilt shout-off does not turn off the motor quick enough, the over drain/over-current can some of the battery cell render to cut-off mode, resulting that the main-board halts.



TOOLS:

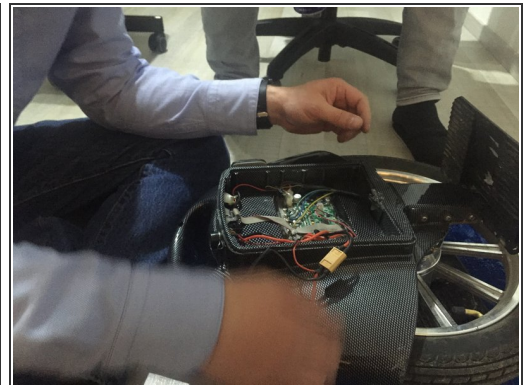
- [Essential Electronics Toolkit](#) (1)
-

Step 1 — Removing rubber cover



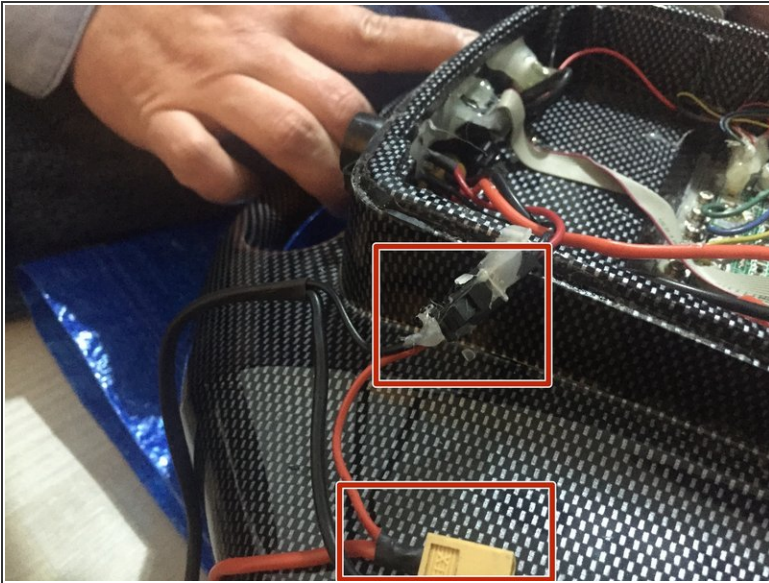
- It's glued to the chassis, but relatively easy to remove.
- remove 6-8 screws, nothing fancy
- New line.
- Lift plastic cover, expect no obstacles

Step 2 — Accessing battery packs



- Lift plastic cover to gain access to battery pack one. Disconnect the big yellowish connector.
- Disconnect the small black gauge connector from the battery pack

Step 3 — Disconnect second battery pack



- The small black gauge connector is for charging the battery pack, the bigger yellow/orange is for discharging it.
- The second battery has the same connectors, one for charge one for discharge, the are squeezed into the gap under the top of the chassis. Disconnect them both.
- Once the batteries are fully disconnected, turn GR16 on, to discharge the on board capacitor fully.
- Then reconnect the second, and the first battery pack. Expect some sparks when the yellow connectors are connected. Don't forget to connect both battery packs.
- Turn on GR16 to check if it is working. Reassemble and fix the rubber cover with duck tapes :) or glue them on.

To reassemble your device, follow these instructions in reverse order.