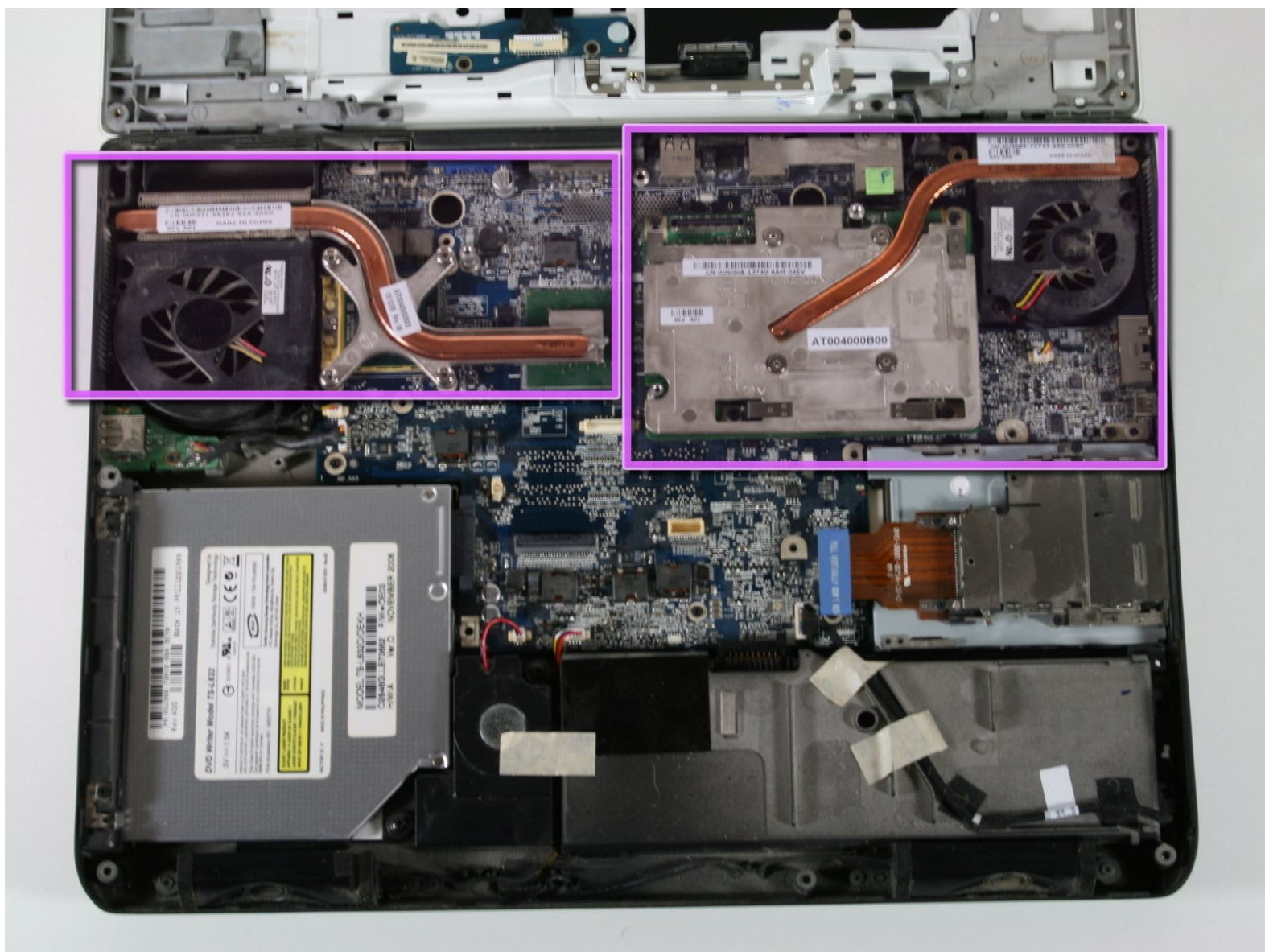




Dell Inspiron E1705 Heat Sink and GPU Replacement

This guide will show you how to open your Dell Inspiron E1705 and install the heat sink.

Written By: Malik Shahbal

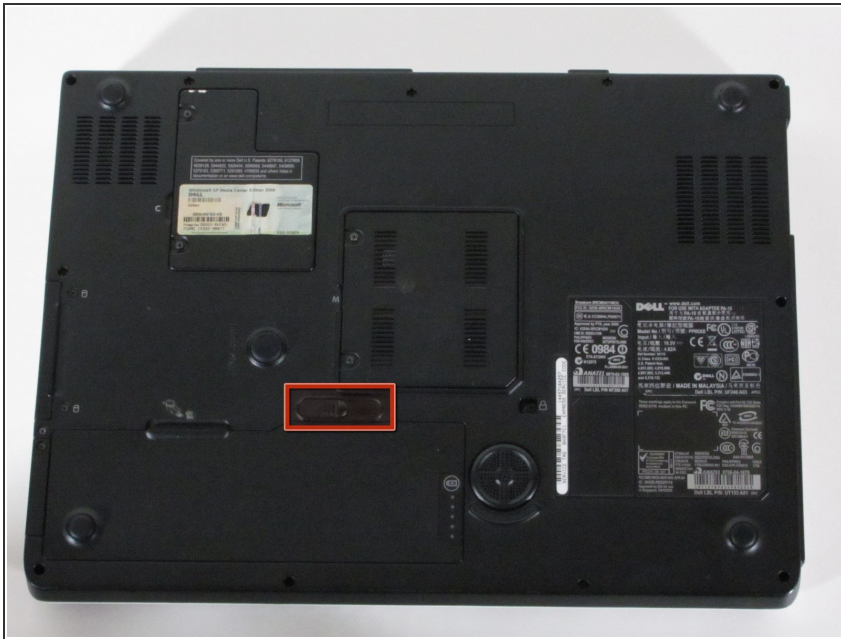




TOOLS:

- [Phillips #1 Screwdriver](#) (1)
- [iFixit Opening Tools](#) (1)

Step 1 — Battery



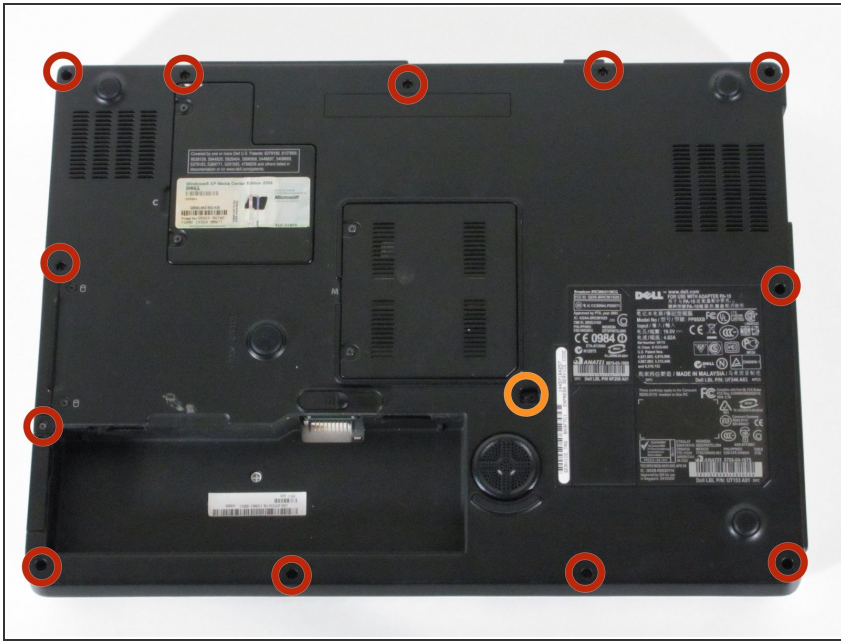
- ⚠ Make sure that the computer is turned off and is disconnected from external power source.
- Turn it upside down and locate the battery release switch.

Step 2



- While holding the switch in the open position, lift out the battery.
- ⓘ If you plan to work on any internal laptop components, press and hold the power button for 5 seconds. This will dissipate any residual charge on the motherboard to prevent electrical shock when you begin to handle it.

Step 3 — Lower Case



- Remove the 12 Phillips #1 screws from the edges of the lower case.
- You may also need to remove the central screw next to the lock icon.

Step 4



- Turn the computer back over and tilt the screen open.
- Use the plastic opening tool to carefully pry the panel out as shown in the pictures

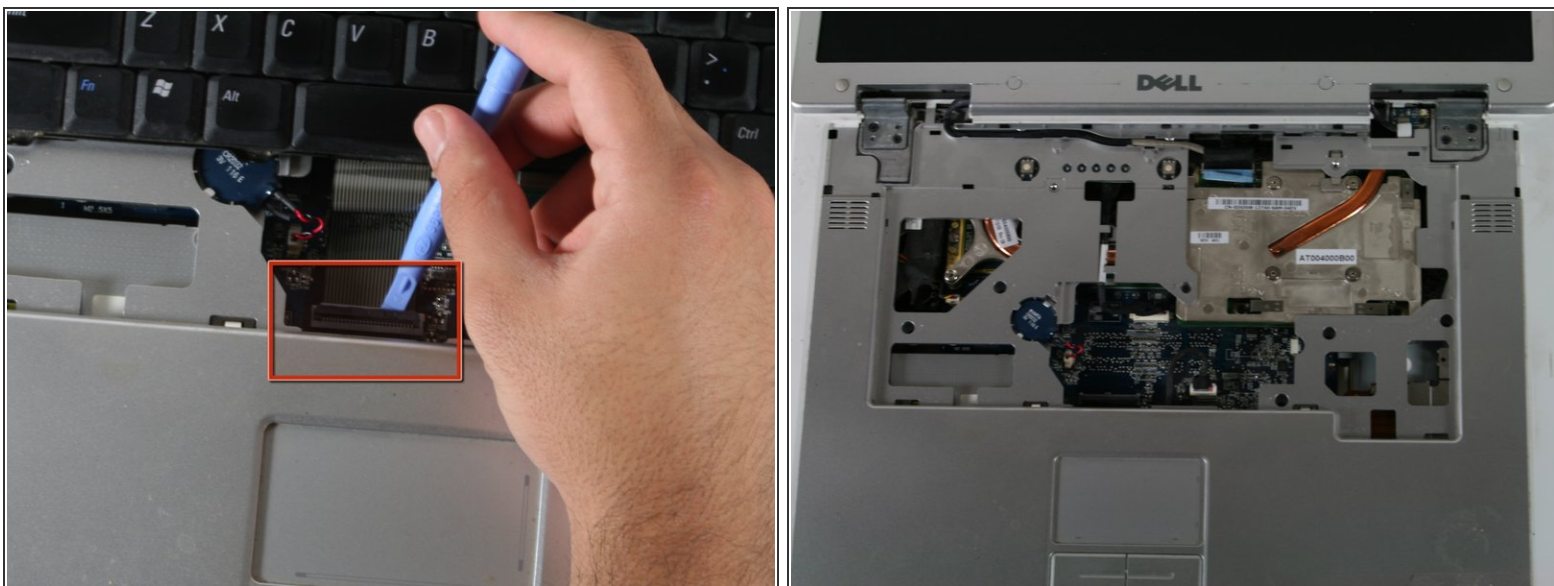
⚠ Remove the plastic panel carefully.

Step 5



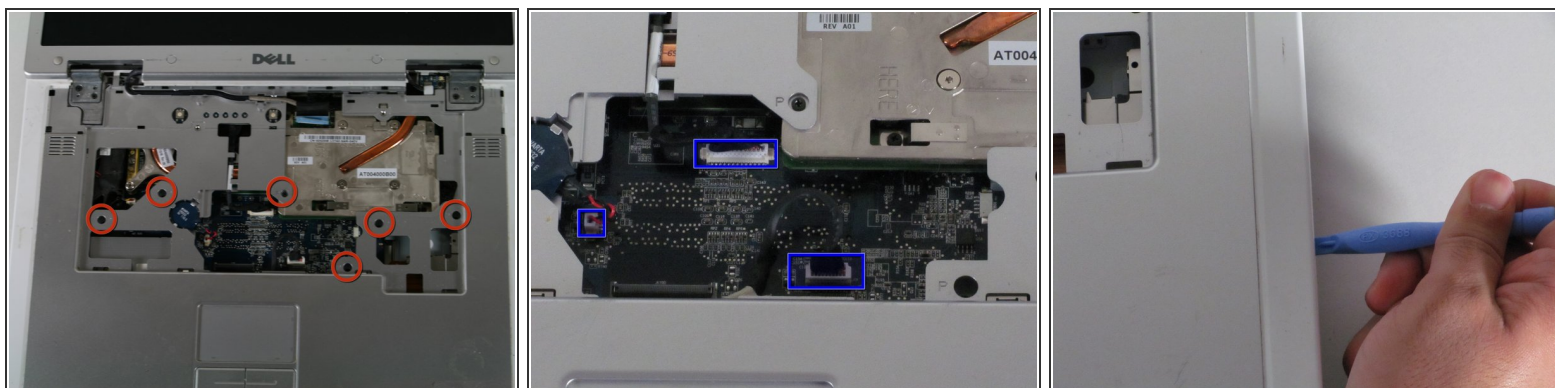
- Use the small Phillips head screwdriver to remove the screws circled in red.
- Gently lift the keyboard up and rest it just below the screen as shown in the picture.
- The keyboard will still be connected to the motherboard.

Step 6



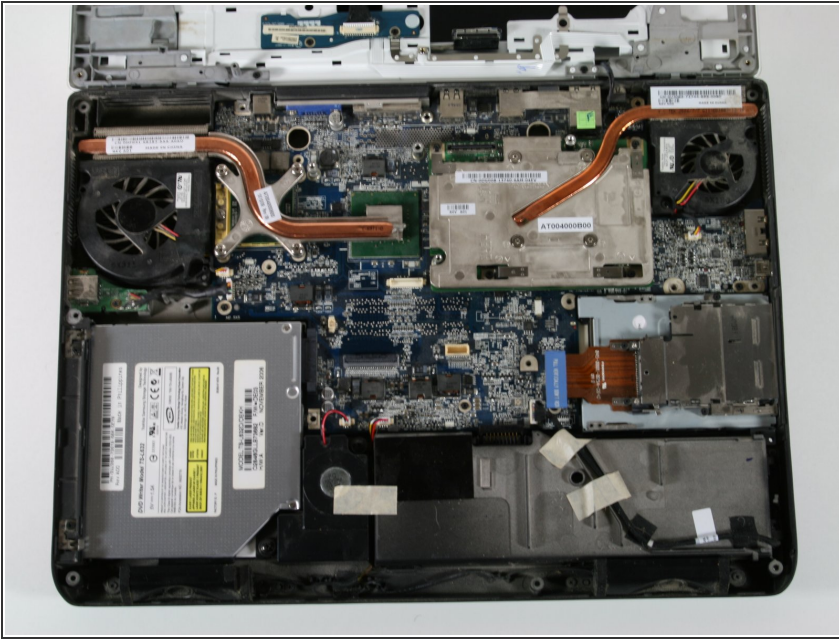
- Before removing the keyboard completely, use the plastic opening tool to gently lift the clamp connecting the keyboard to the motherboard.
- Once the keyboard has been disconnected, remove the keyboard completely.

Step 7



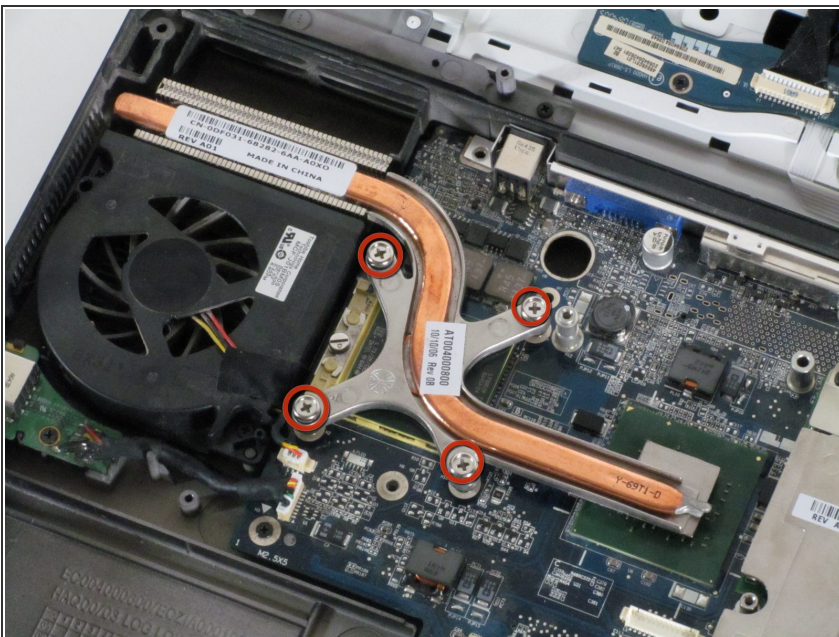
- Using a Phillips head screwdriver, remove the screws shown in the image. They all have the letter "P" next to them.
- Carefully unplug the connections shown.
- ⓘ Don't forget the display cable. It is slightly to the right of the Dell logo at the top.
- Also, the wireless cables on the right side may prevent moving the upper case out of the way.
- Once the screws have been removed and the connections unplugged, use the plastic opening tool to gently separate the panel from the lower case.

Step 8



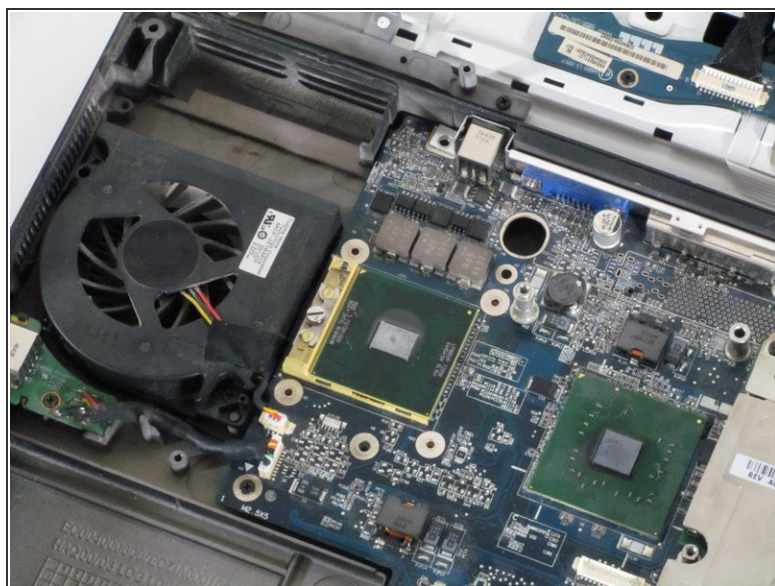
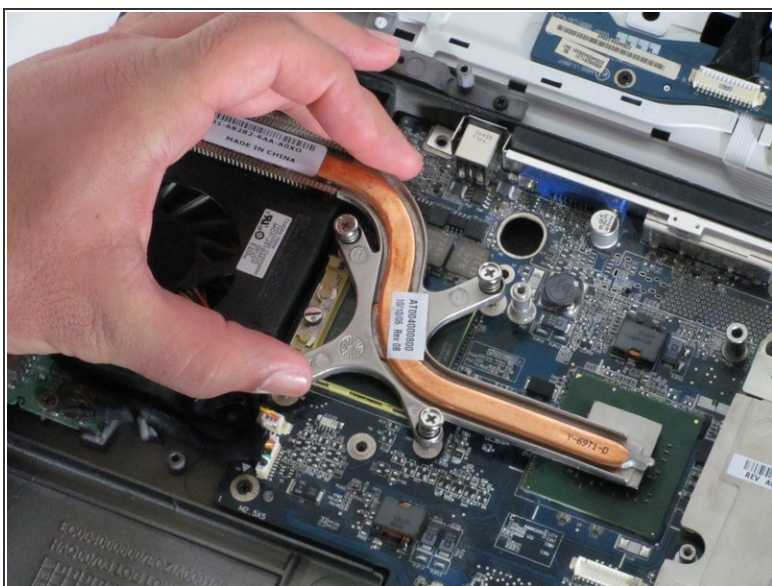
- Remove the plastic case by gently bending back towards the screen. You can bend the screen all the way back if that helps.
- ⓘ For the motherboard the optical drive will be removed already. However for the lower case it is not necessary that it be taken out.
- ⚠ If you are having trouble removing the upper plastic case (and LCD) from the lower case, there may still be a wire connected to the Wi-Fi adapter. Turn the laptop over, open the Wi-Fi module access panel and remove the + and - leads for the Wi-Fi antenna.

Step 9 — Heat Sink



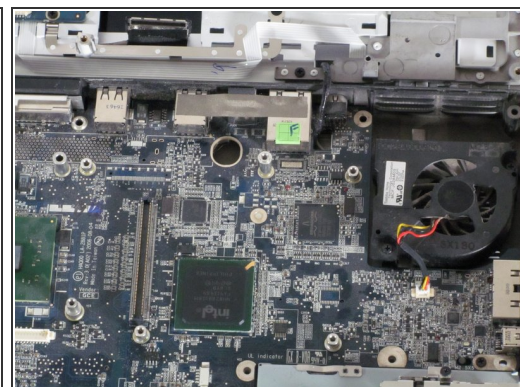
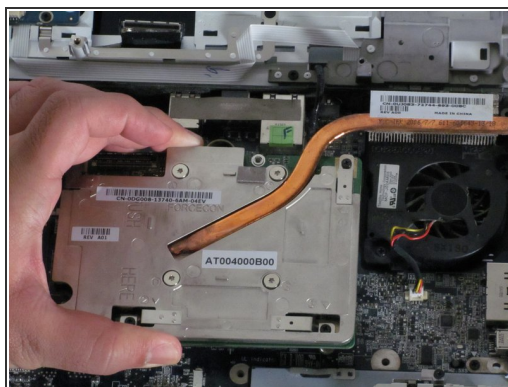
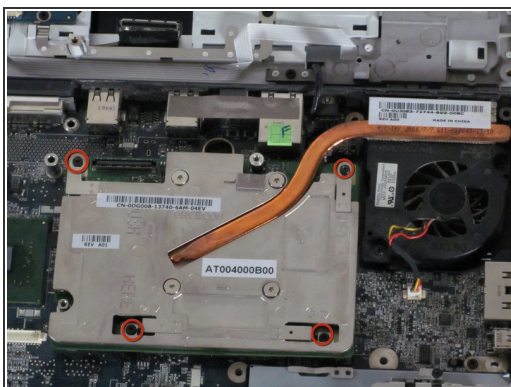
- Unscrew the 4 screws shown in the picture.
- ⓘ Screws will not come out all the way.

Step 10



- Remove the heat sync gently

Step 11



- ⓘ The right heat sync is connected to the videocard. To remove the heat sync requires also removing the videocard.

- Remove the 4 screws indicated in the first picture

- ⓘ Screws will not totally come out.

- Gently lift up the videocard and heat sync from the motherboard.

To reassemble your device, follow these instructions in reverse order.