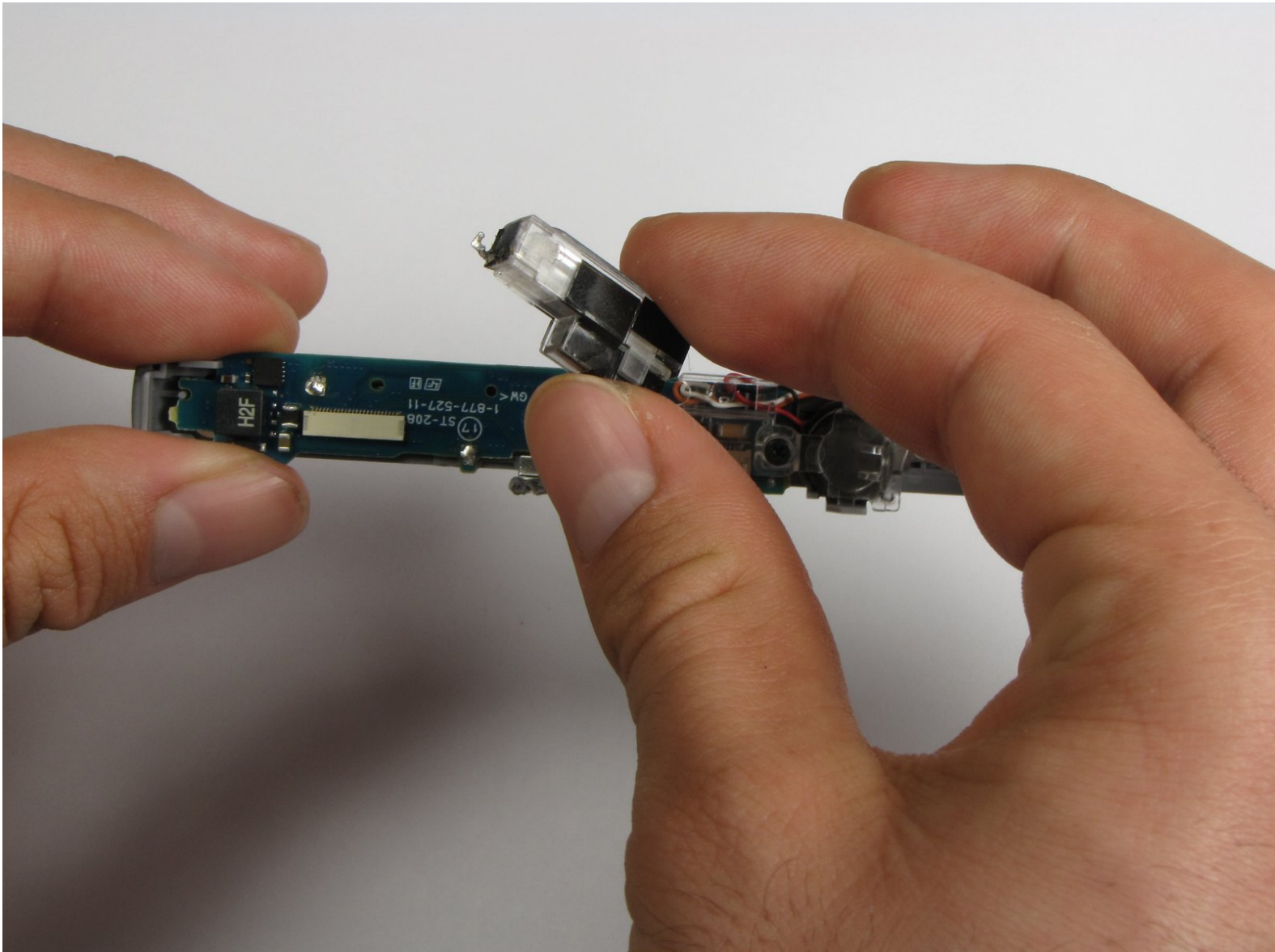




Sony Cyber-shot DSC-W290 Flash Bulb Replacement

This guide will show you how to install or replace the Sony Cyber-shot DSC-W290's flash bulb.

Written By: William Schill



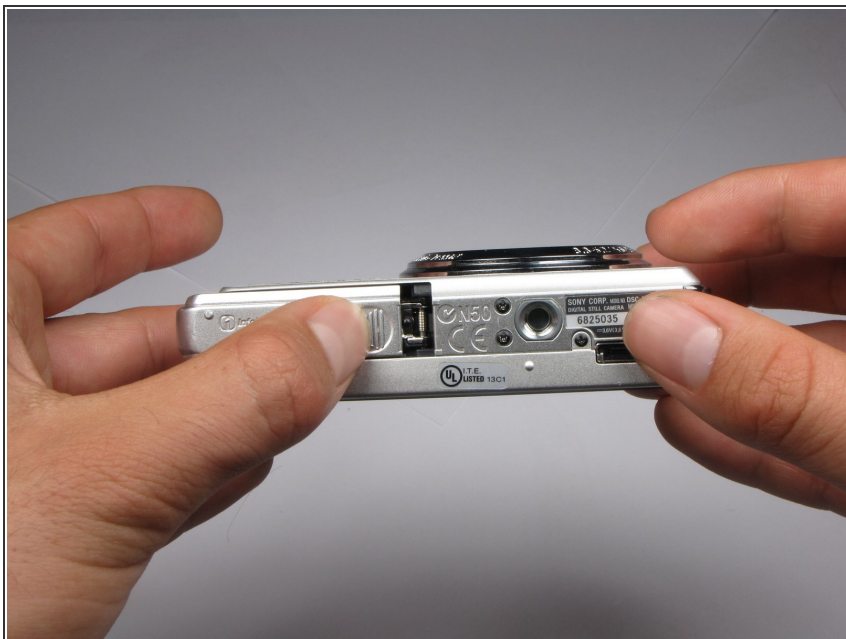
INTRODUCTION

Make sure you have all of the requisite tools on hand before beginning to replace the flash bulb.

TOOLS:

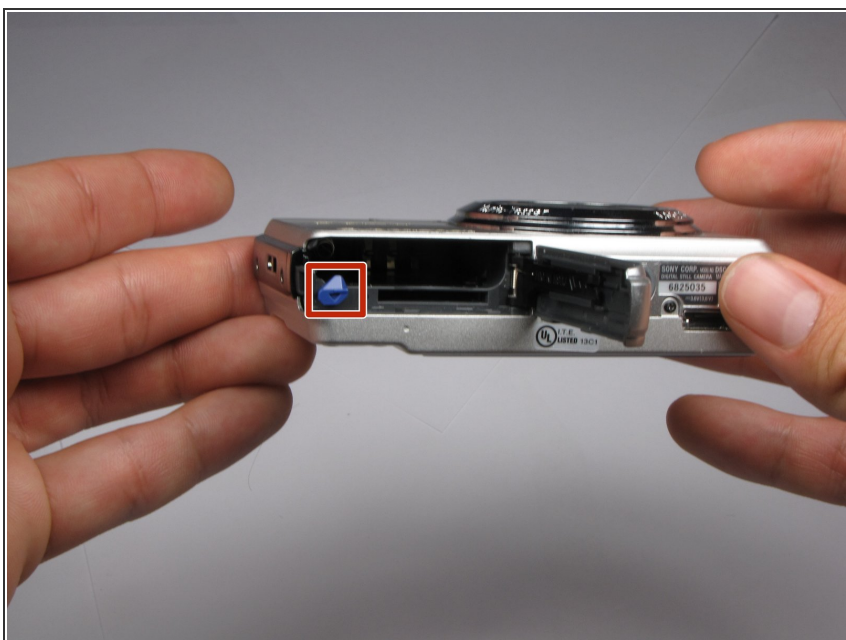
- [Soldering Workstation](#) (1)
 - [Phillips #0 Screwdriver](#) (1)
 - [Tweezers](#) (1)
 - [Desoldering Braid](#) (1)
-

Step 1 — Battery



- Find the hatch labeled "open" on the left side of the bottom of the camera.
- Slide the hatch in the direction that the arrow is pointing. The hatch will open outward on its own.

Step 2



- Slide the blue locking tab to release the battery.
- Slide the battery out of the camera.

Step 3 — Outer Casing



- Replace hatch and rotate camera 180 degrees. You should still be looking at the bottom of the camera.
- Remove the four 2.5mm Phillips #0 screws.

Step 4



- Turn the camera so the left side-panel reading "5x Optical Zoom" faces you.
- Remove the two 2.5mm Phillips #0 screws.
- ⓘ You may have to remove the screws with a pair of tweezers when the screws are almost out.

Step 5



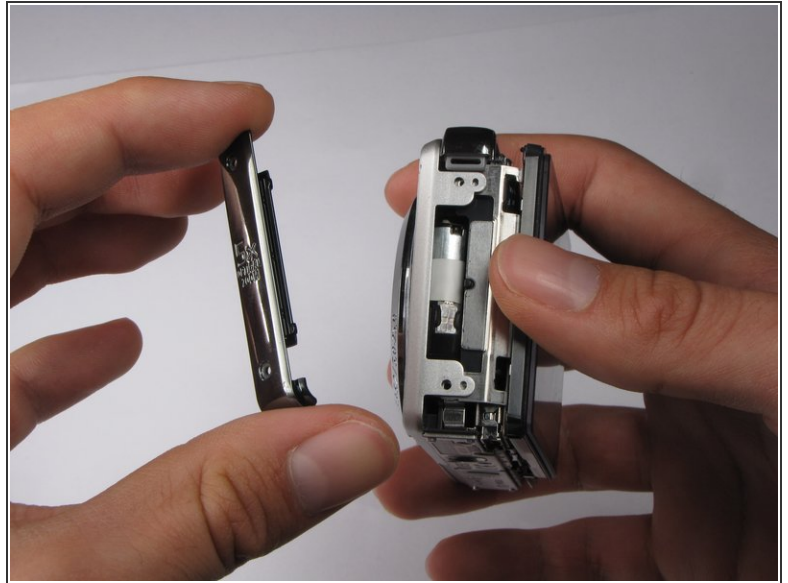
- Turn the camera so the right side faces you.
- Remove the two 2.5mm Phillips #0 screws.
- ⓘ You may have to remove the screws with a pair of tweezers when the screws are almost out.

Step 6



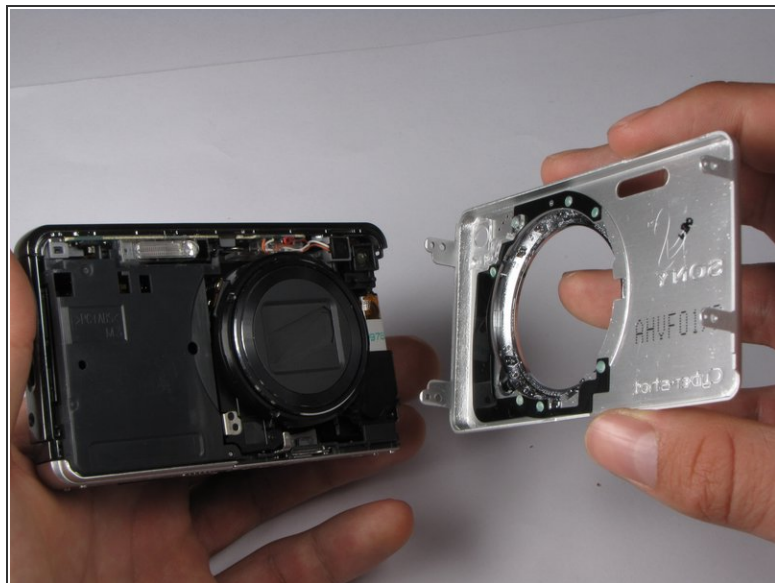
- Rotate camera so that the back is facing you.
- Pull the back casing directly away from the LCD screen.

Step 7



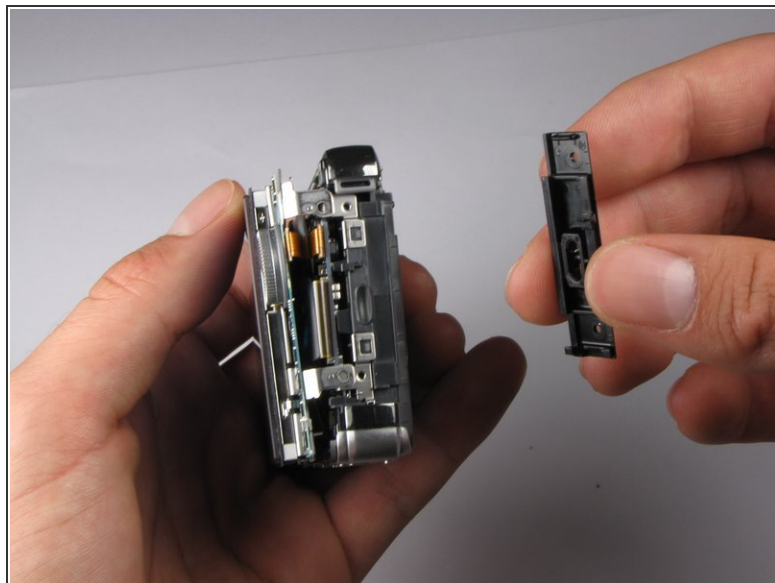
- Turn the camera so that the left side is facing you.
- Pull the left side-panel off of the camera.

Step 8



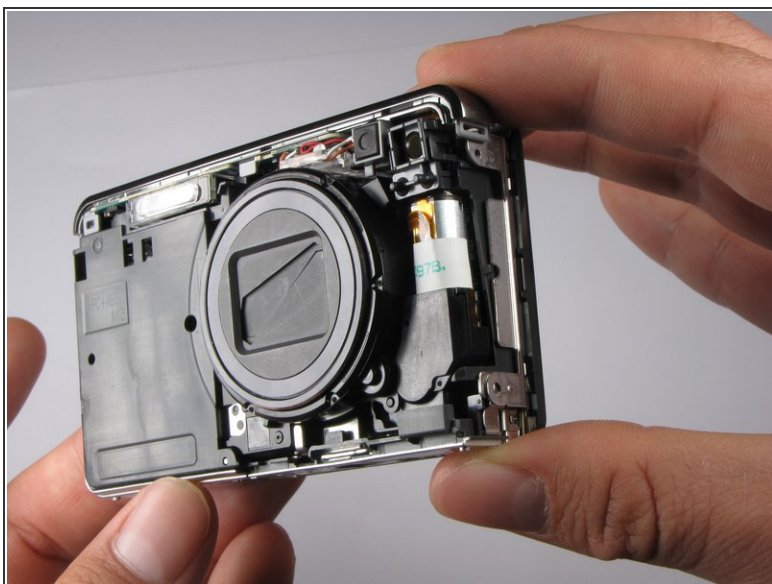
- Turn camera so that the front of the camera is facing you.
 - Pull the front casing directly away from the camera.
- i** The right side panel may fall off when you take the front panel off.

Step 9



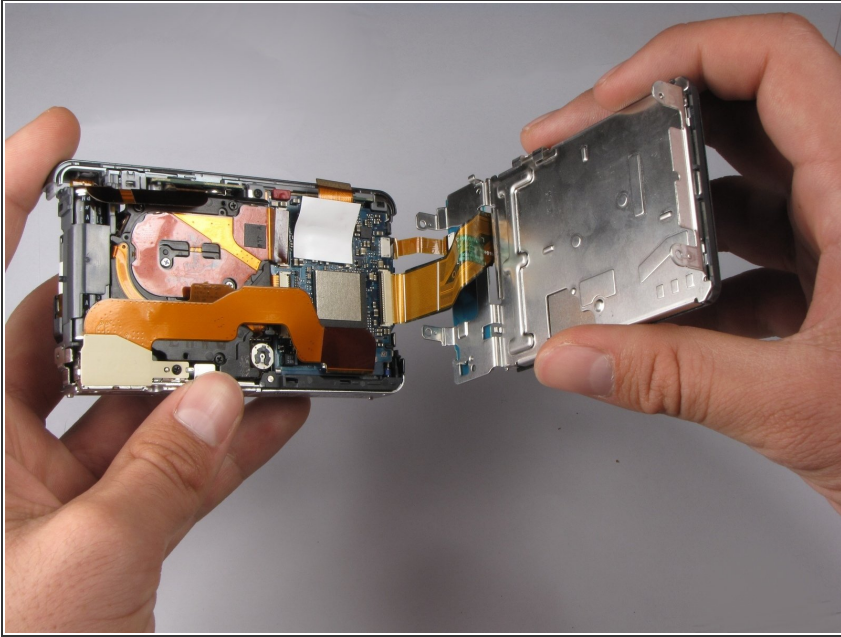
- Turn the camera so that the right side is facing you.
- Pull the right side-panel away from the rest of the camera.

Step 10



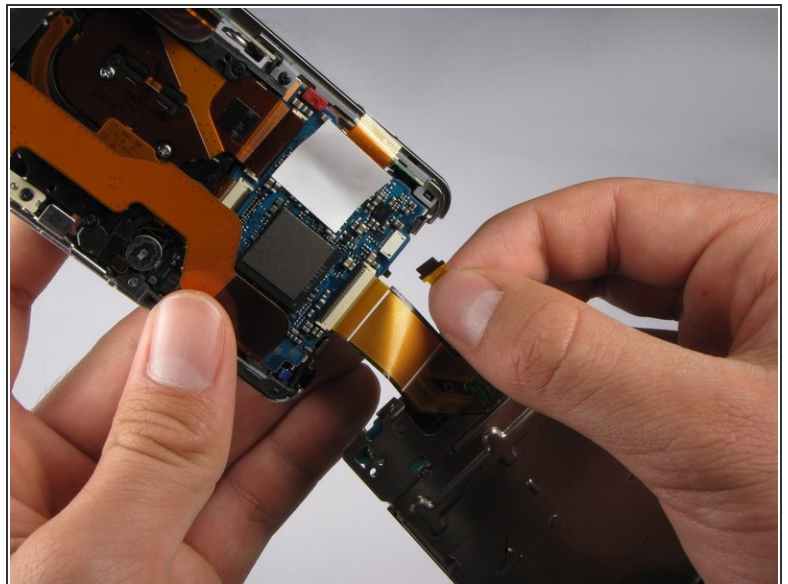
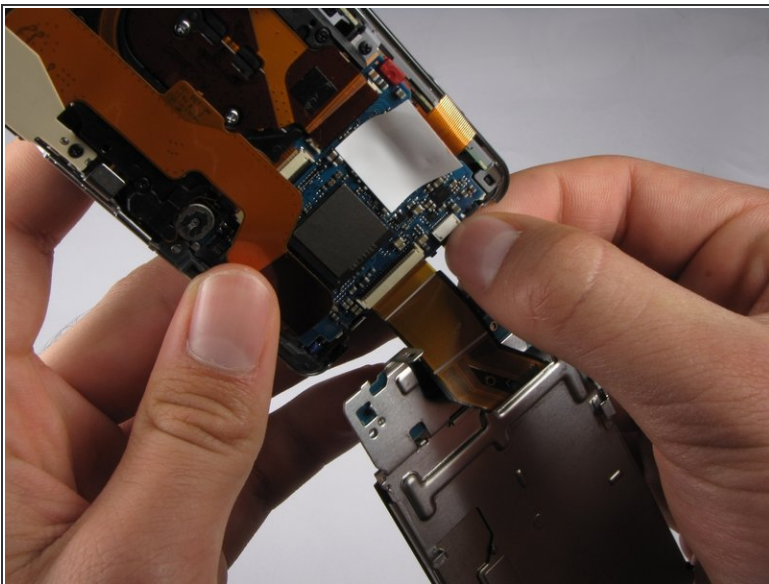
- This is what your camera should look like now that you have removed the casing from all sides.

Step 11 — LCD Assembly



- Gently pull the LCD and its casing away from the motherboard as shown.
- ⓘ Be careful not to rip out any ribbon cables.

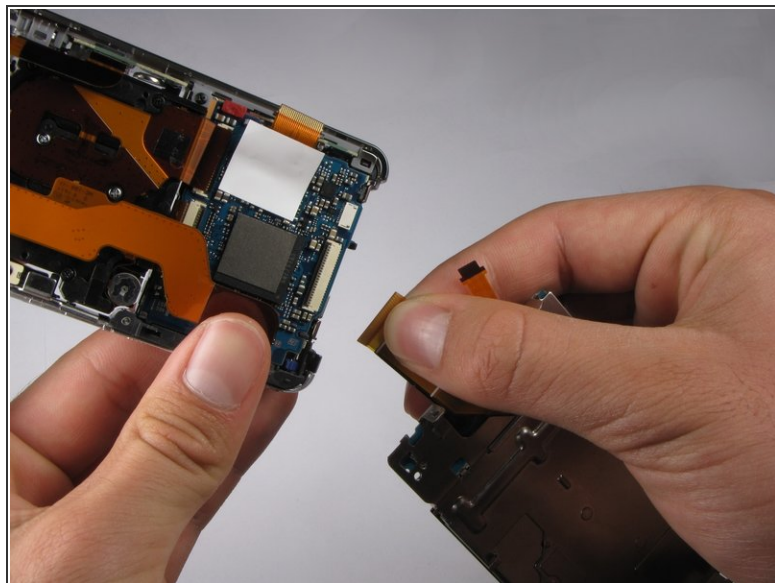
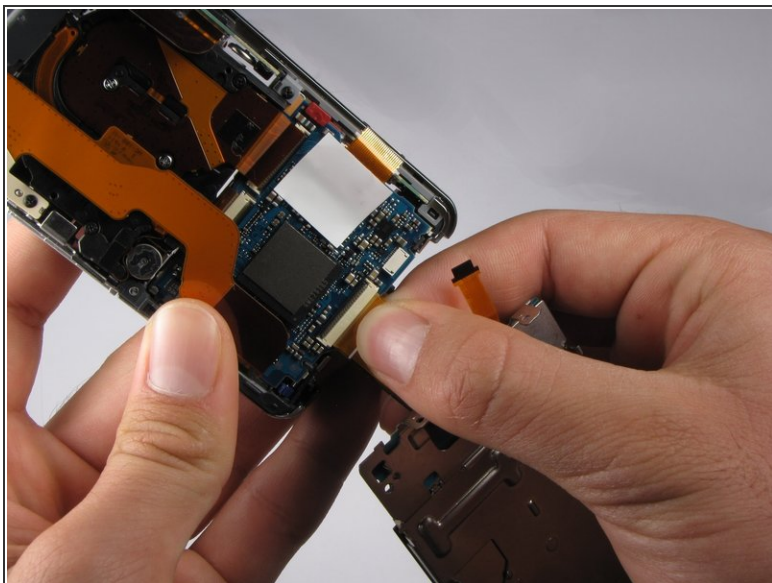
Step 12



- Disconnect the small ribbon-wire by gently pulling on the small ribbon-wire where it connects with the motherboard.

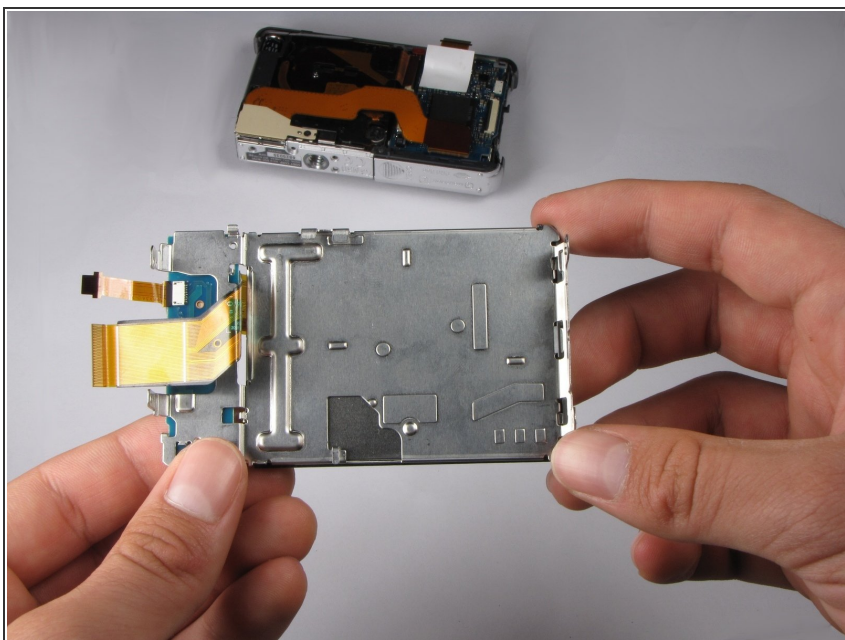
⚠ Do *not* use excessive force to remove the wire because this may cause it to tear.

Step 13



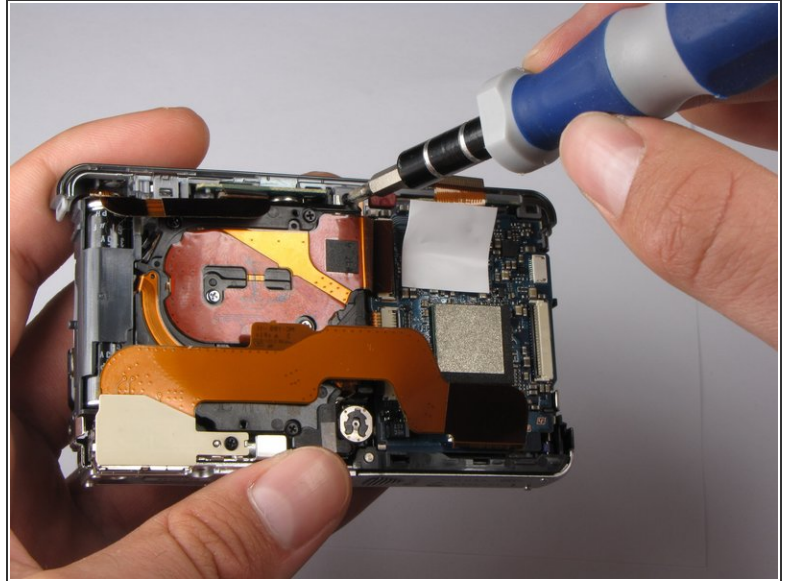
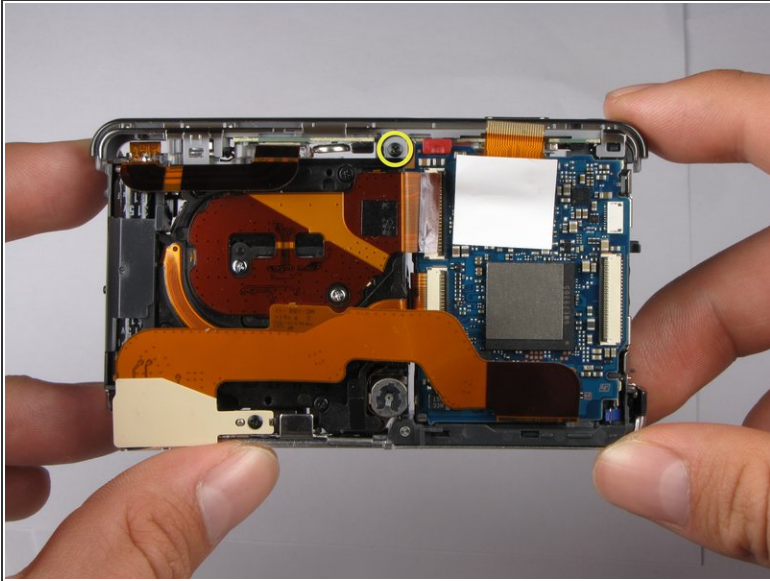
- Disconnect the large ribbon-wire by pulling on the large ribbon-wire where it connects to the motherboard.

Step 14



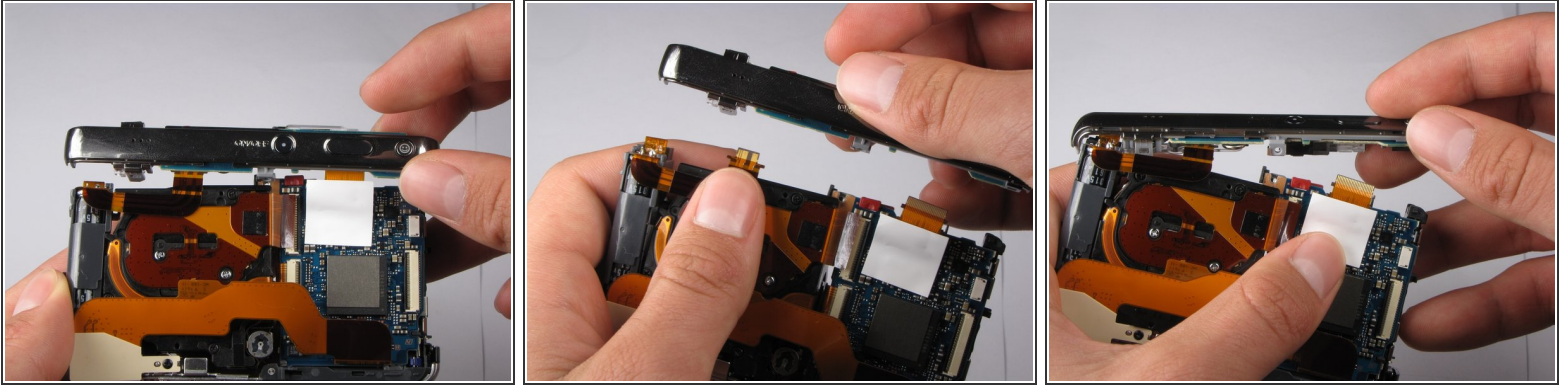
- Pull the LCD and its casing away from the rest of the camera.

Step 15 — Flash Bulb Assembly



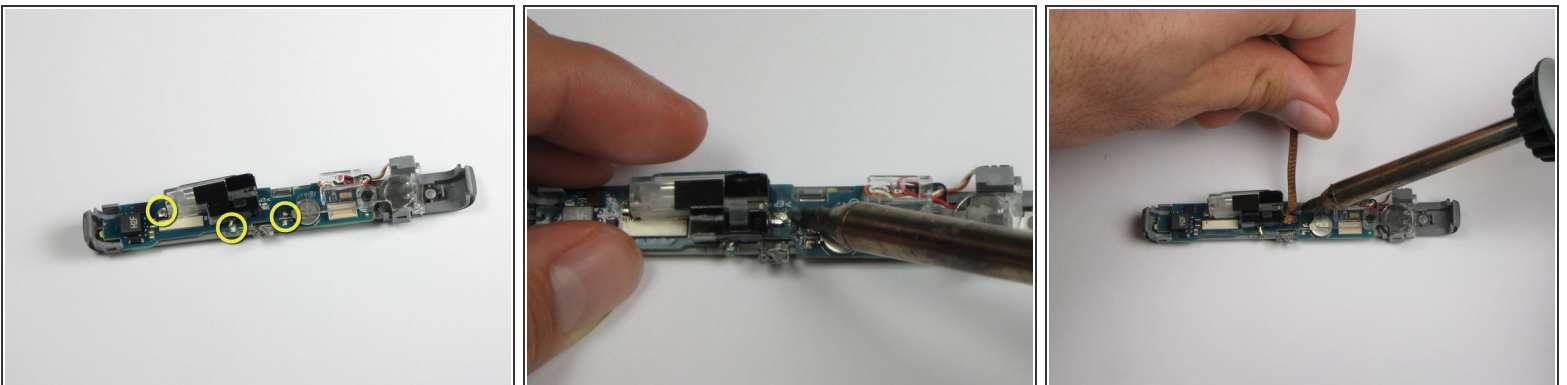
- Turn the camera so the back is facing you.
- Remove the 2.5mm Philips #0 screw at the top of the camera.

Step 16



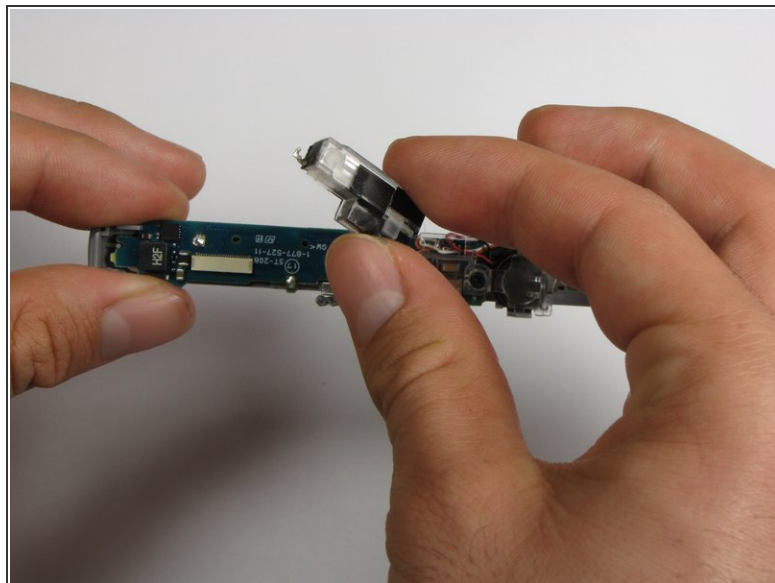
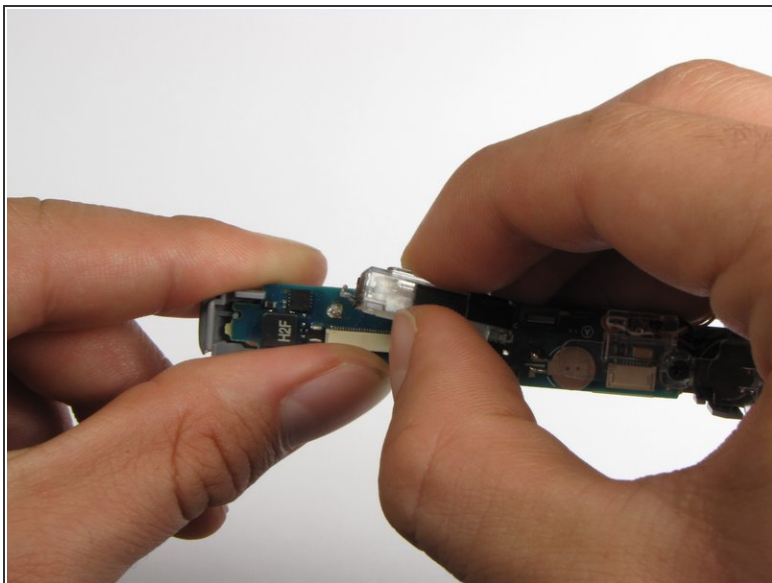
- Tilt top casing up and towards you.
- Carefully remove the right ribbon-wire from the top camera panel by pulling where the wire connects to the top.
- ⓘ Make sure to hold the camera with your thumb on the white square to ensure the ribbon-wire is not disconnected from the motherboard.
- Carefully remove the left ribbon-wire from the top camera panel by pulling where the wire connects to the top.

Step 17 — Flash Bulb



- Pull the top of the camera off and turn it so the bottom is facing you.
- Desolder the three connections from the bulb to the small circuit board.
- Remove the excess solder using your soldering iron and desoldering wick.

Step 18



- Gently wiggle the flash bulb to remove it from the joints.
- ⓘ It may be necessary to use the soldering iron to heat up the joints as you pull it off.

To reassemble your device, follow these instructions in reverse order.