



Disassembling Ninja NJ600 Blender Base Cover

Prerequisite Only In order to replace any internal components, the bottom cover of the blender base must be removed.

Written By: Kody D



INTRODUCTION

This guide will serve as a prerequisite for most replacement guides. In order to access internal components that need replacing, the cover on the bottom of the blender base must be removed. This is a simple process that involves the removal of a total of 11 screws and 3 layers of plastic molds. The screws can be removed with a Phillips #2 screwdriver.

TOOLS:

- [Phillips #2 Screwdriver](#) (1)
-

Step 1 — Blender Base Cover



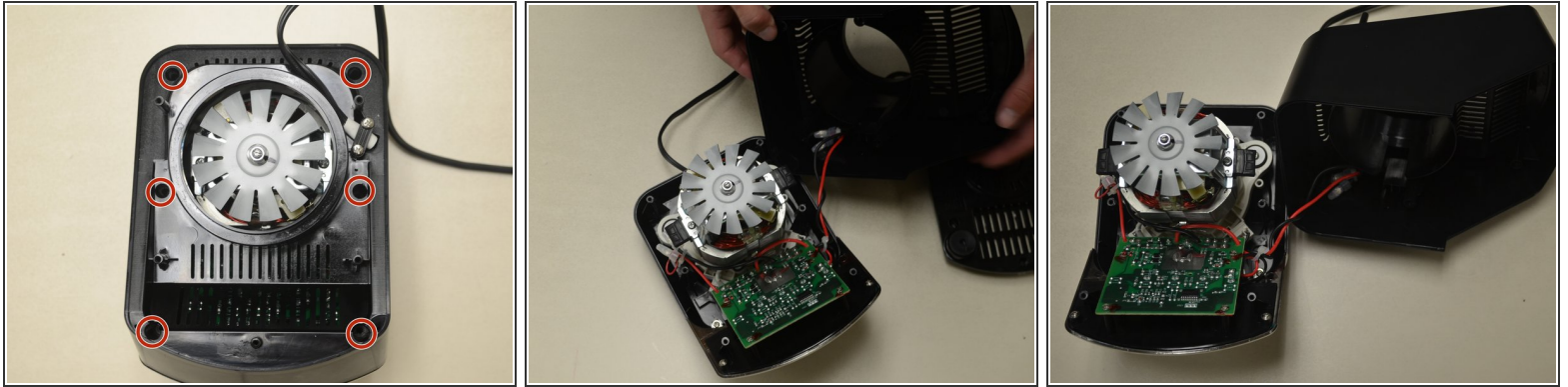
- Remove the five screws (13mm long, 6mm head diameter) using a Phillips #2 screwdriver.

Step 2



- Without removing any screws, you can pull the 2nd layer free from the base. Do this now and set it down gently next to the base.
- The power cord runs through a hole in the side of this layer. Squeeze the cord and pull it through the hole to separate the layer from the cord.

Step 3



- Using the Phillips #2 screwdriver, remove these six screws (13mm long, 6mm head diameter). Then carefully remove this layer, and rest it next to the blender base.

⚠ Be careful not to damage the two wires that are keeping this third layer attached to the base.

To reassemble your device, follow these instructions in reverse order.