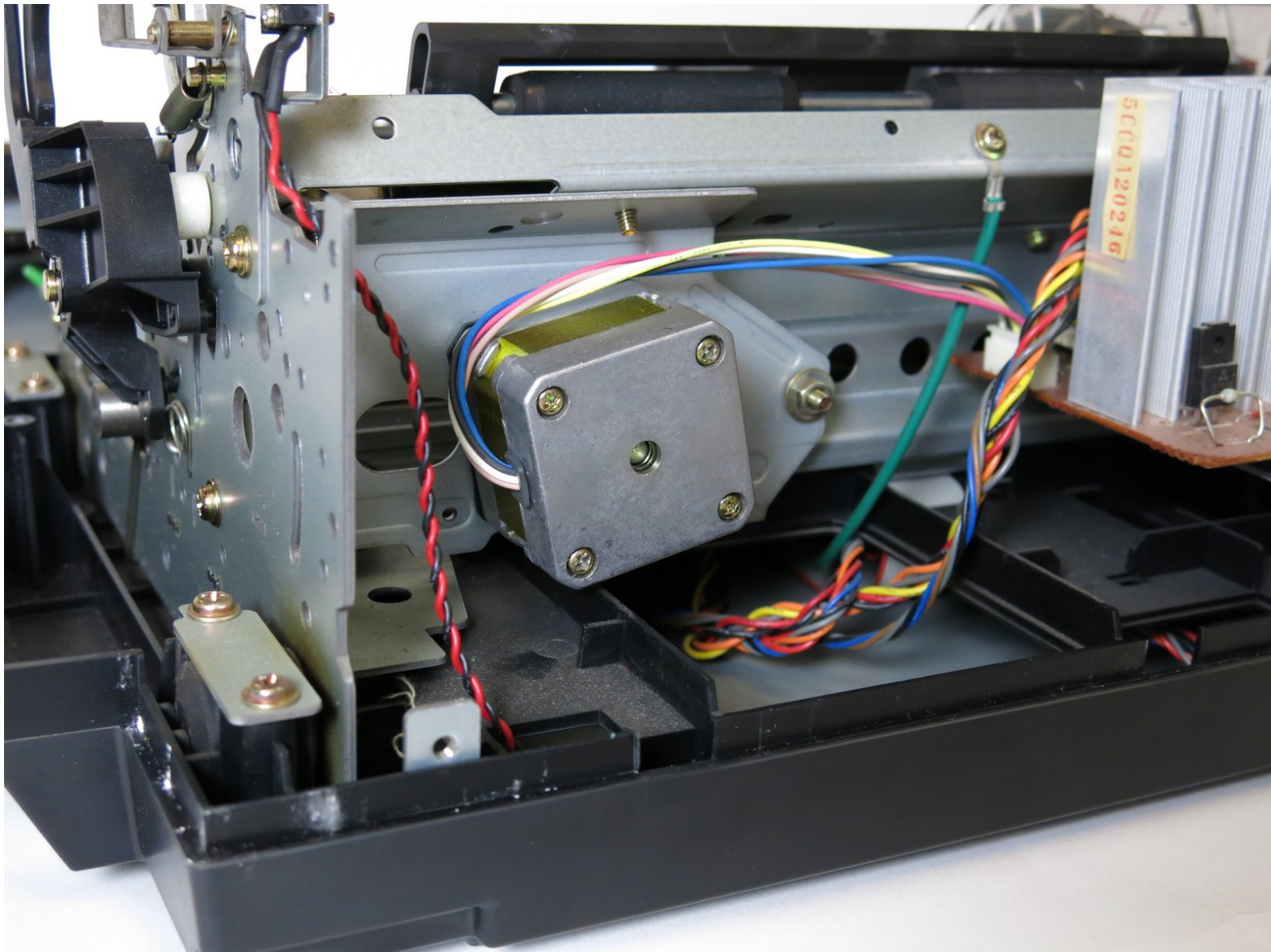




# Panasonic KX-E603 Stepper Motor Replacement

This guide will show you how to properly remove the stepper motor from the Panasonic KX-E603.

Written By: Lindsay Stratis



---

## INTRODUCTION

This guide will demonstrate how to replace the stepper motor on your typewriter, step-by-step.

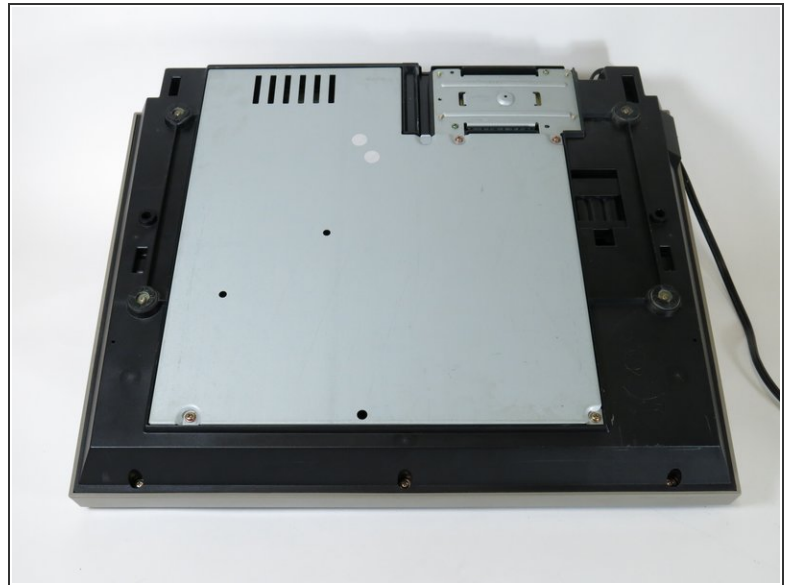
---



### TOOLS:

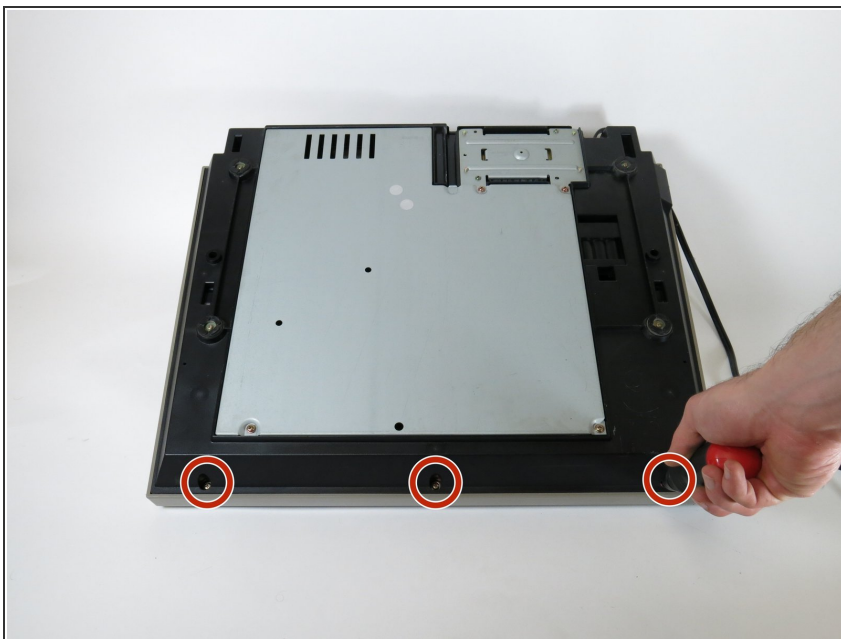
- [Phillips #1 Screwdriver](#) (1)
-

## Step 1 — Case



- Flip the typewriter to expose the bottom body panel.
- ⓘ Be careful to not damage the top surface of the typewriter when you rest it upside-down.

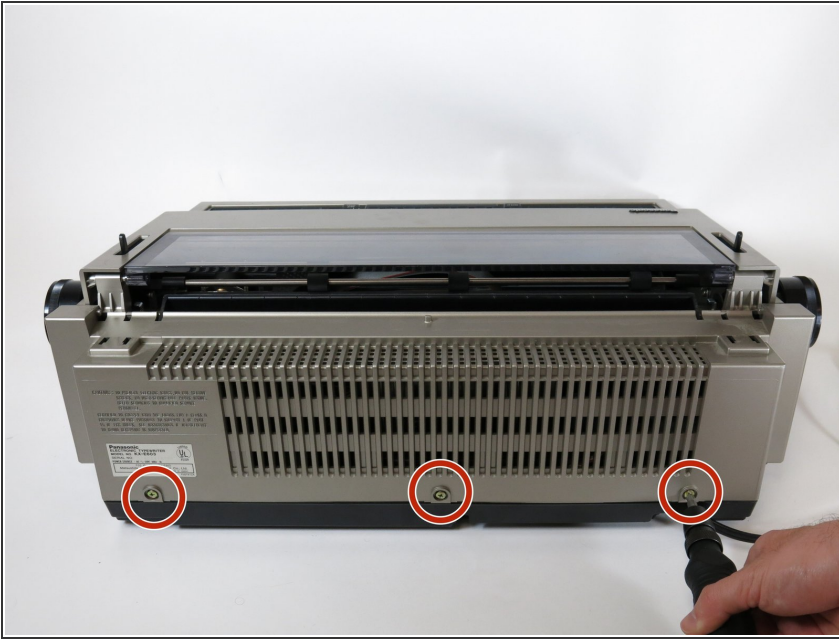
## Step 2



- Remove the three 19 mm screws located in the recessed holes on the edge of the black underside panel using a Phillips #2 screwdriver.



## Step 3



- Flip the typewriter back to its original orientation, then rotate it so that the rear is facing towards you.
- Remove the three 19 mm screws near the bottom of the tan body panel using a Phillips #2 screwdriver.

## Step 4



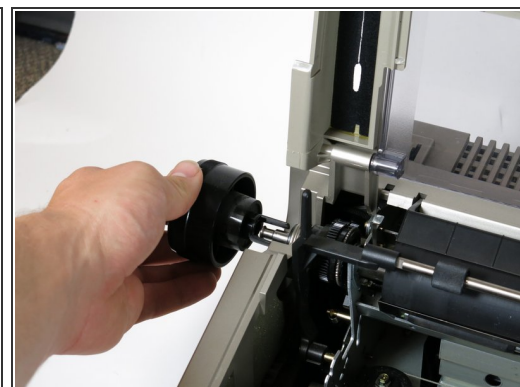
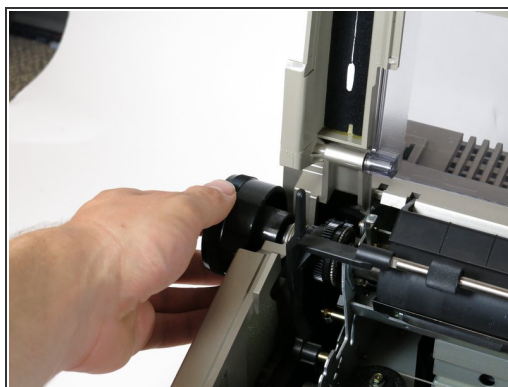
- Open the typewriter lid and push the carriage away to expose the two screws holding the case to the chassis.
- Remove the two 19 mm screws using a Phillips #2 screwdriver.

## Step 5



- Flip the plastic lever on the right side of the roller wheel to disengage the paper lock.

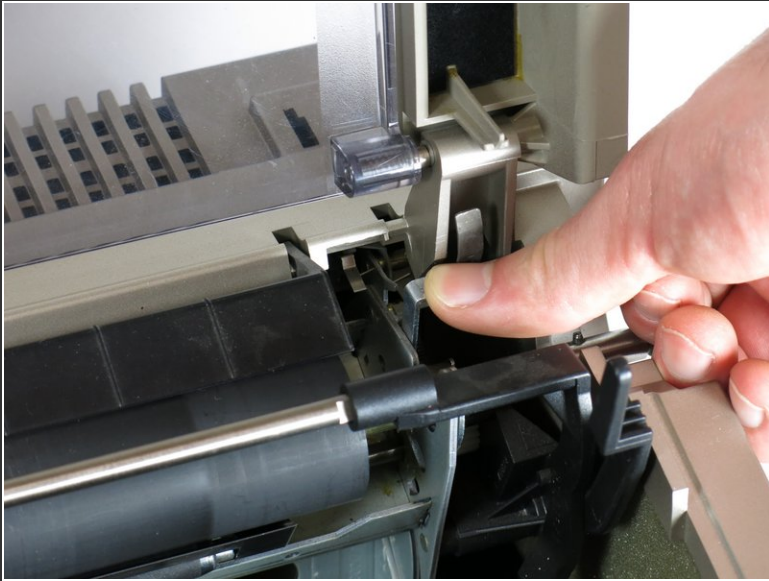
## Step 6



- Remove the roller wheel adjustment knobs by pulling firmly outward.
  - ❗ Both black knobs must be removed in this step.



## Step 7



- Unlock the roller wheel by simultaneously pressing down on the two spring levers on the left and right of the roller ends.

## Step 8



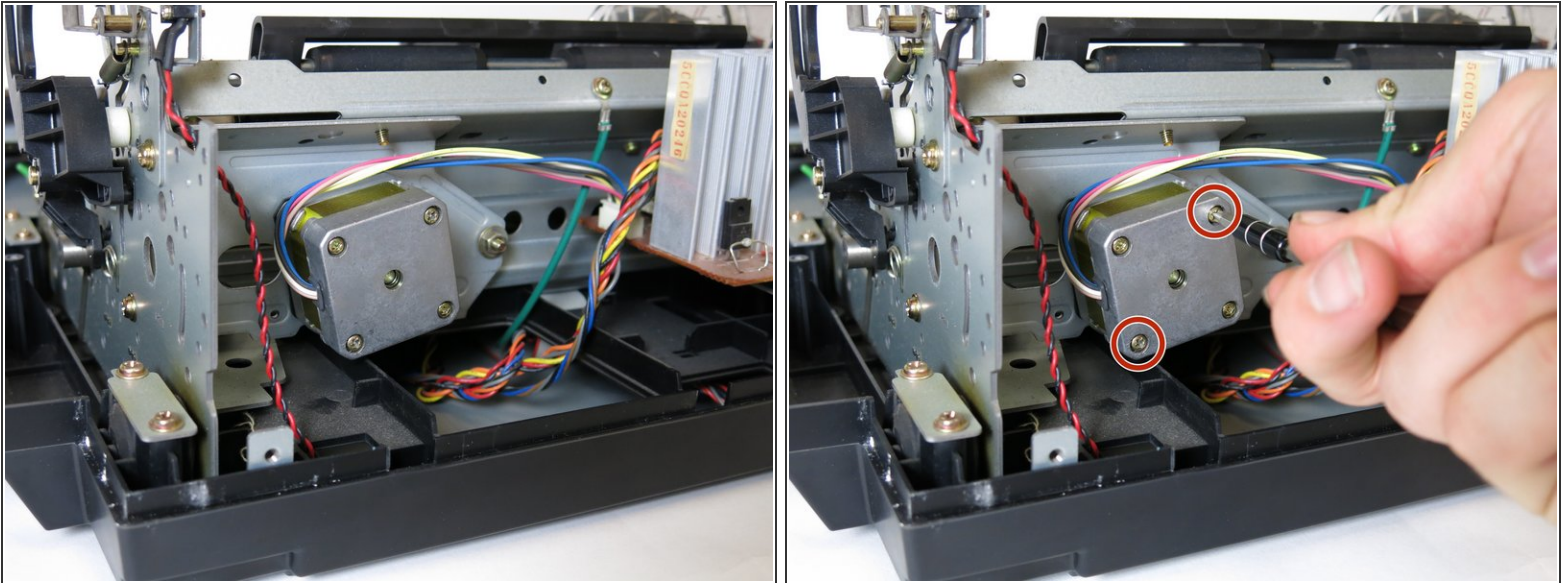
- While both spring levers are depressed, lift up with both hands to remove the roller wheel.

## Step 9



- Flip the top down. Then, with both hands, lift straight up on the tan case to remove it from the chassis.

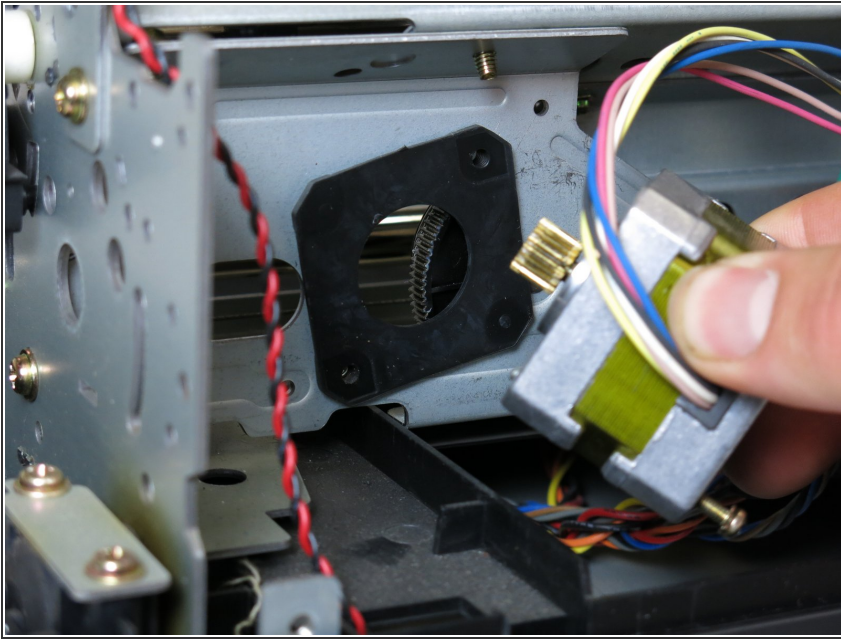
## Step 10 — Stepper Motor



- ⓘ Do not remove the screws fully from the stepper motor. Just unscrew them enough to allow the stepper motor to come loose. Removing them all the way can cause damage to the motor.
- The stepper motor is located on the left when looking from the rear of the typewriter. Rotate the typewriter so that the stepper motor is facing you.
- ⓘ While loosening the screws, use your finger to brace the corresponding nuts found on the opposite side of the stepper motor mounting bracket.
- Using a P1 screwdriver, unscrew the top right and bottom right integrated #3 screws from the back of the stepper motor.



## Step 11



- Remove the stepper motor by pulling it straight out.

To reassemble your device, follow these instructions in reverse order using a working stepper motor.