



Written By: Wyatt



INTRODUCTION

Prerequisite Only



TOOLS:

- [Spudger](#) (1)
-

Step 1 — Panel Cover



⚠ Make sure the computer is turned off, by selecting the start menu and choosing "Shut Down".

⚠ Ensure all cables, speakers and other devices are unplugged and turned off before opening the computer case.

Step 2



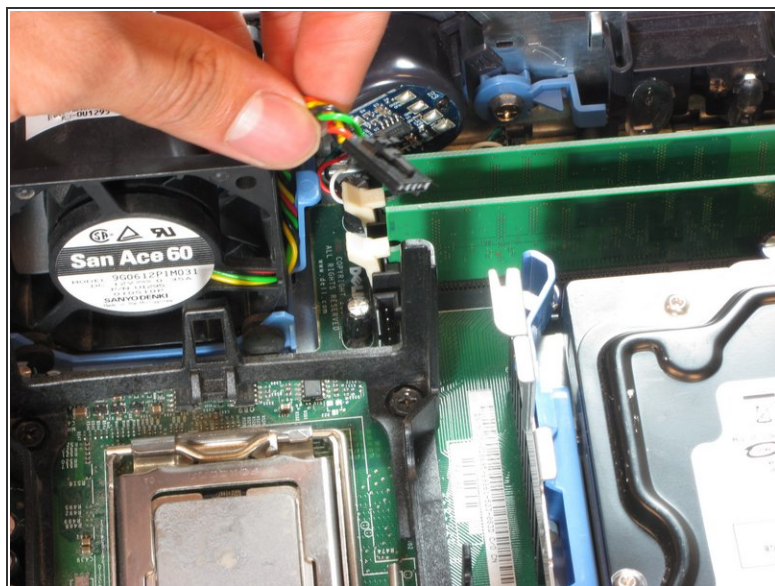
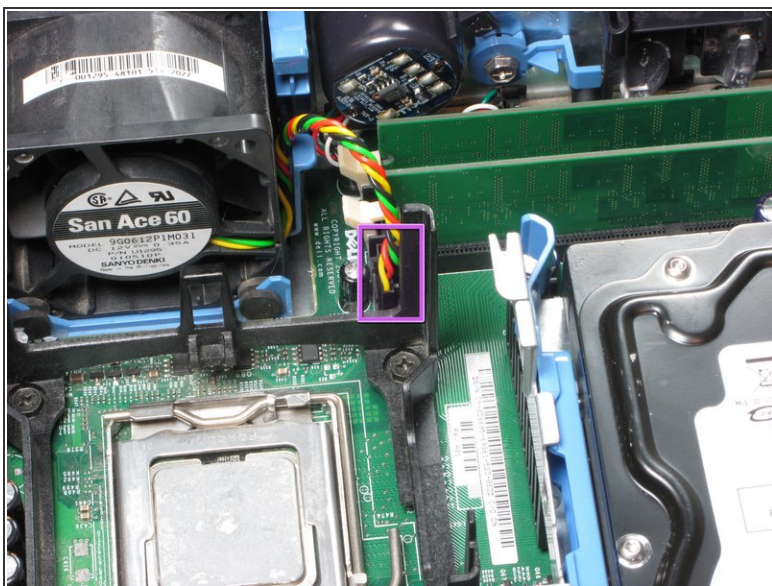
- Lay the computer on its side; you will see a blue knob.
- Turn this knob 90 deg clockwise.

Step 3



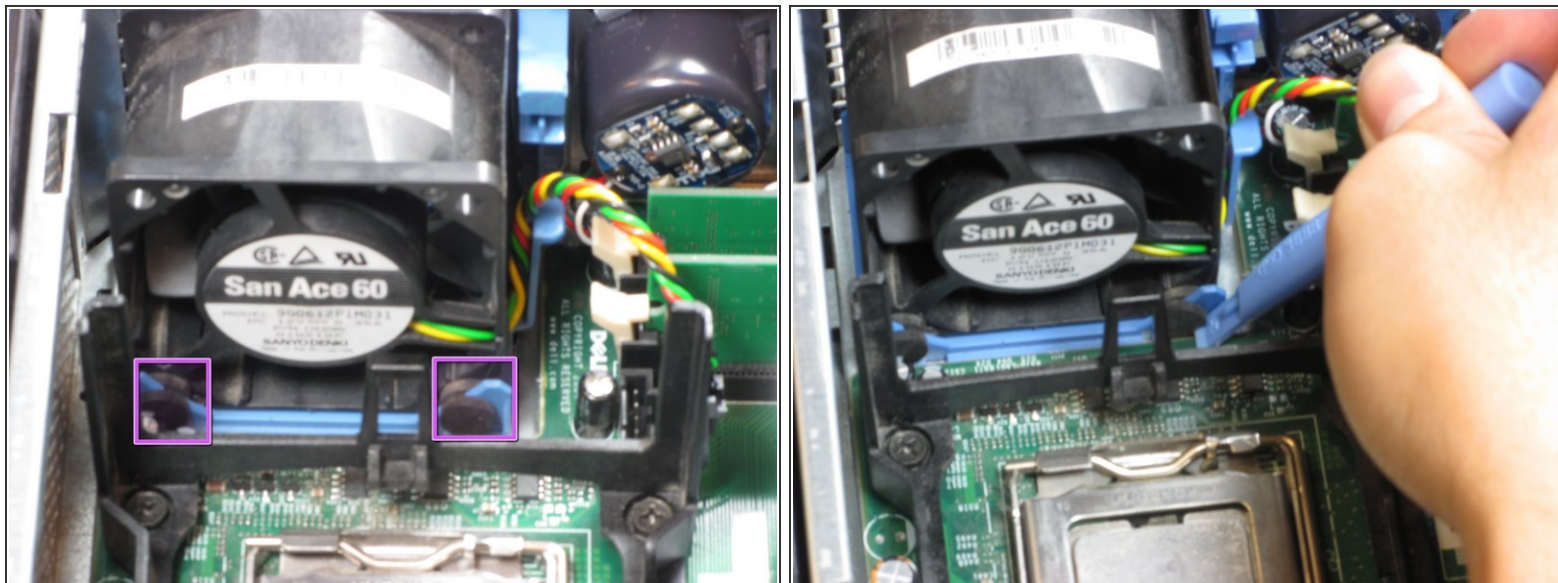
- Slide the panel case forward about 1/2 inch while knob is turned.
- Lift panel case off computer.

Step 4 — Upper Fan



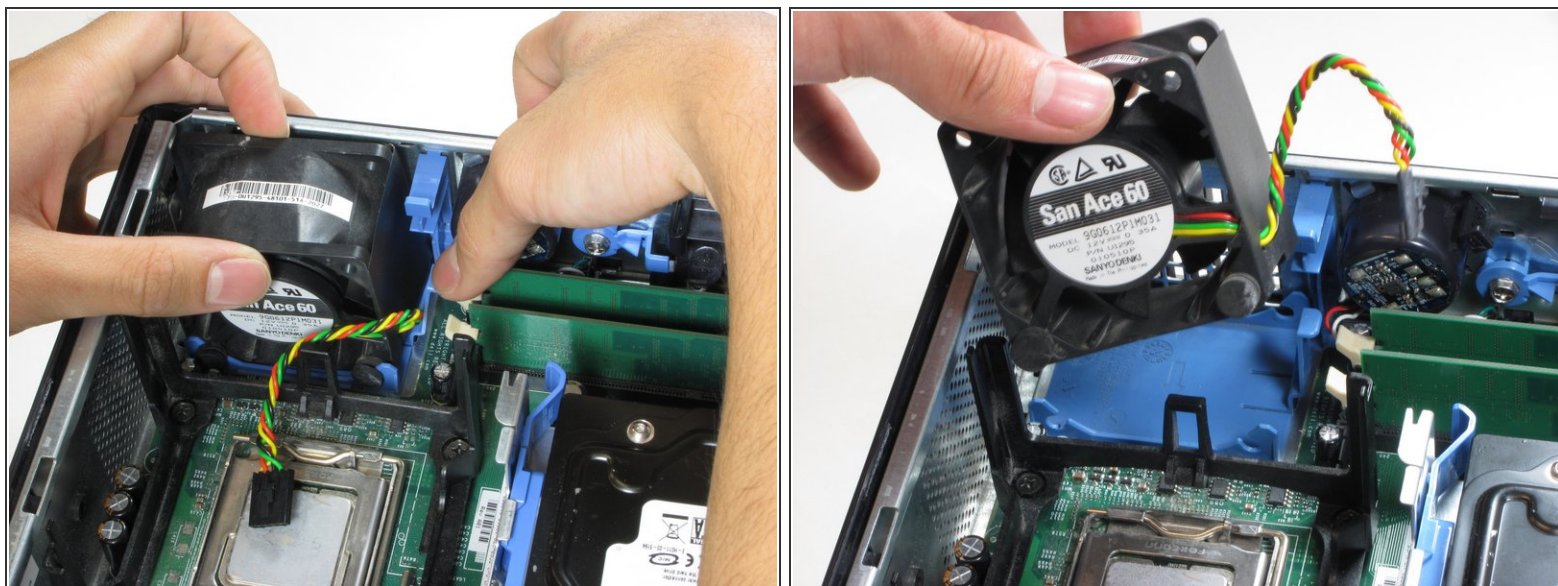
- Remove the power supply that connects the upper fan to the motherboard. The power supply has black, red, green and yellow wires.

Step 5



- Remove the rubber grommets from the base of the fan. A spudger may be useful.

Step 6



- Press on the blue release tab and pull the upper fan out of the computer.

To reassemble your device, follow these instructions in reverse order.