



Insignia NS-CLIP02 Digital Display Replacement

This guide shows you how to replace a broken...

Written By: Aubrey



INTRODUCTION

This guide shows you how to replace a broken display on the Insignia NS-CLIP02. The device should be physically unplugged, not just “switched off.” If your display glass is cracked, keep further breakage contained and prevent bodily harm during your repair by taping over the glass.

TOOLS:

[Essential Electronics Toolkit](#) (1)

[Spatule en métal](#) (1)

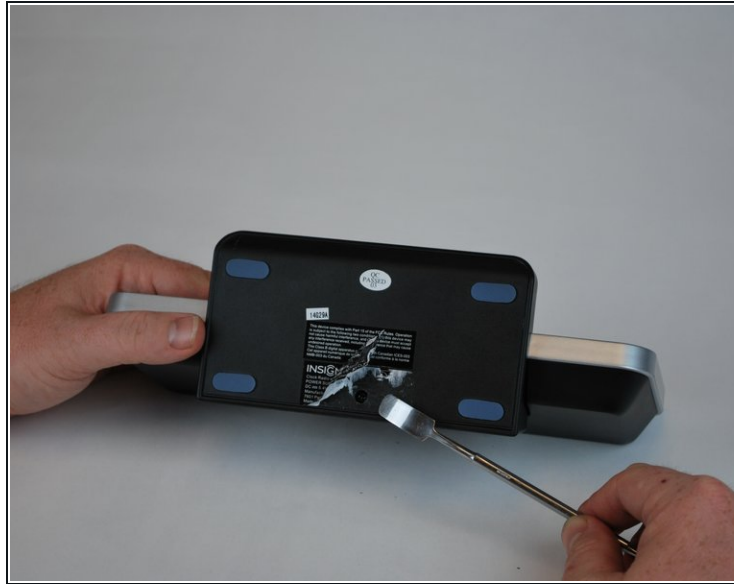
[Magnetized jeweler's #1 Phillips screwdriver](#)
(1)

Step 1 — Motherboard



- Set the clock radio on the work space so the bottom of the device is showing.

Step 2



- Use a metal spudger to peel back the adhesive sticker on the bottom of the clock.

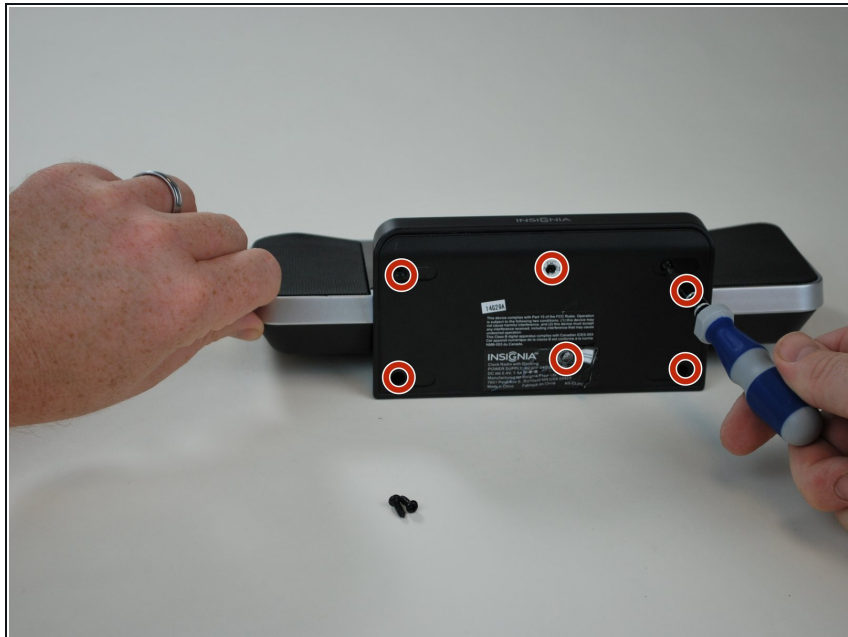
i You should see a single screw beneath the sticker.

Step 3



- Using a plastic opening tool, peel off the adhesive gel stoppers.

Step 4



- Use a Phillips screwdriver to remove the six 11 mm screws on the bottom of the device.

Step 5



- Remove the bottom cover from the device to reveal the motherboard.

Step 6



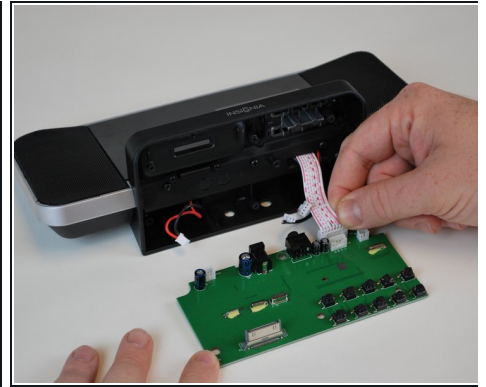
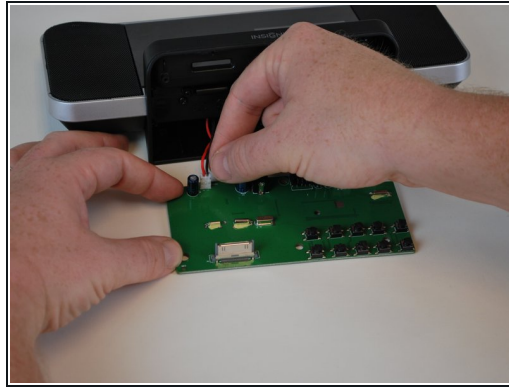
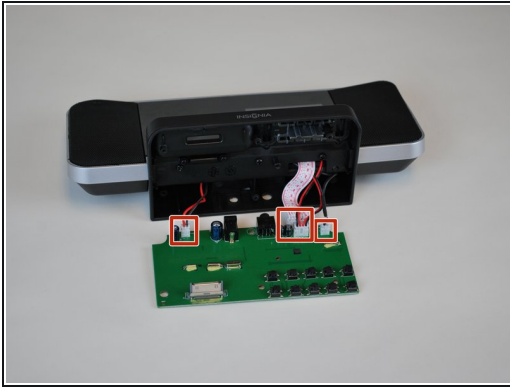
- Use a Phillips screwdriver to remove the 9.5 mm screw located near the center of the motherboard.

Step 7



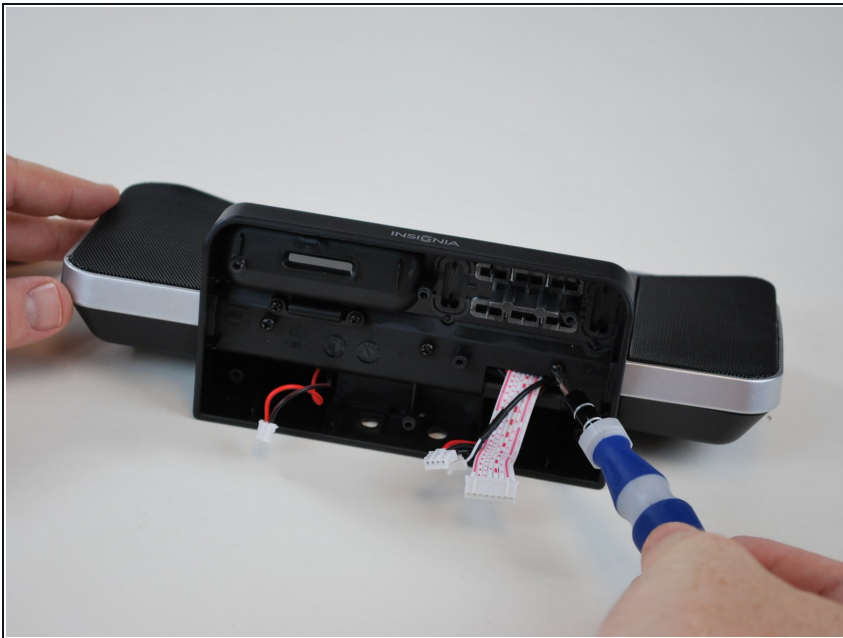
- Lift the motherboard away from the device.

Step 8



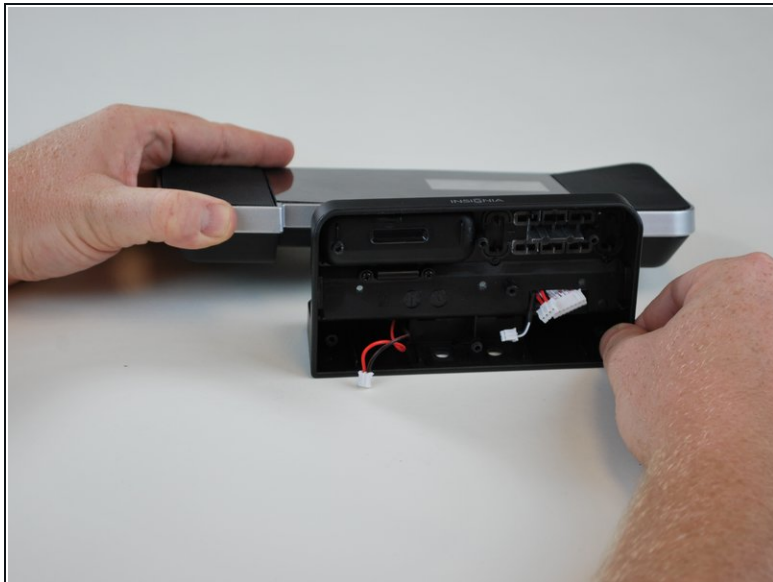
- Disconnect the four cables connecting the motherboard to the device.

Step 9 — Digital Display



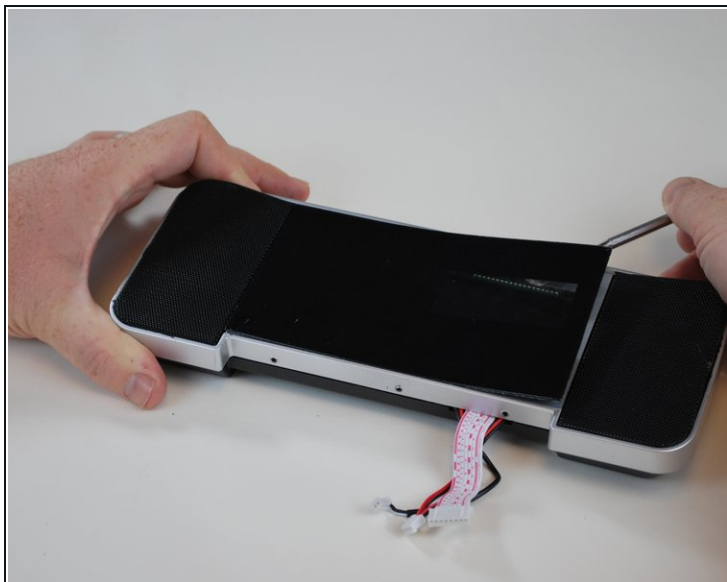
- Using the Phillips screwdriver, remove the three screws that run along the center of the base.

Step 10



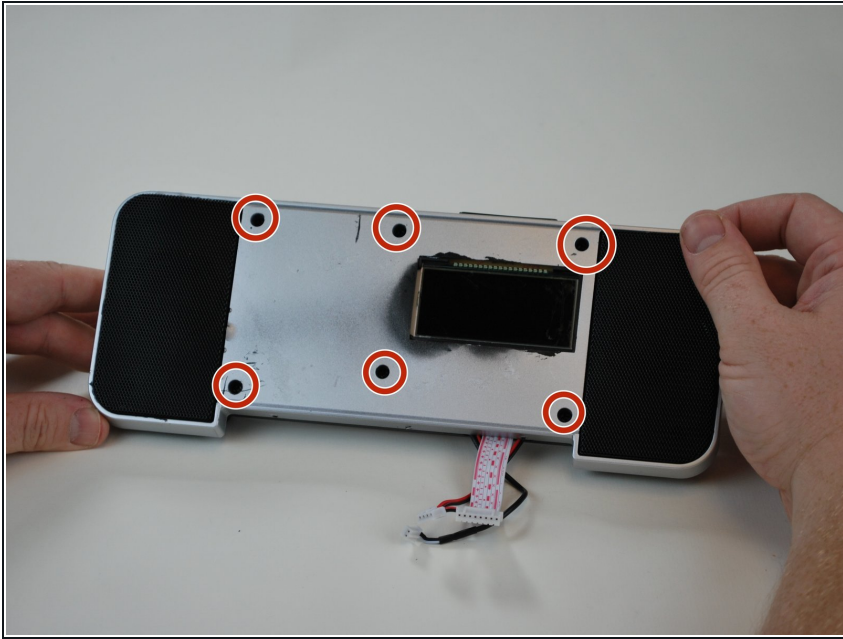
- Carefully remove the base.

Step 11



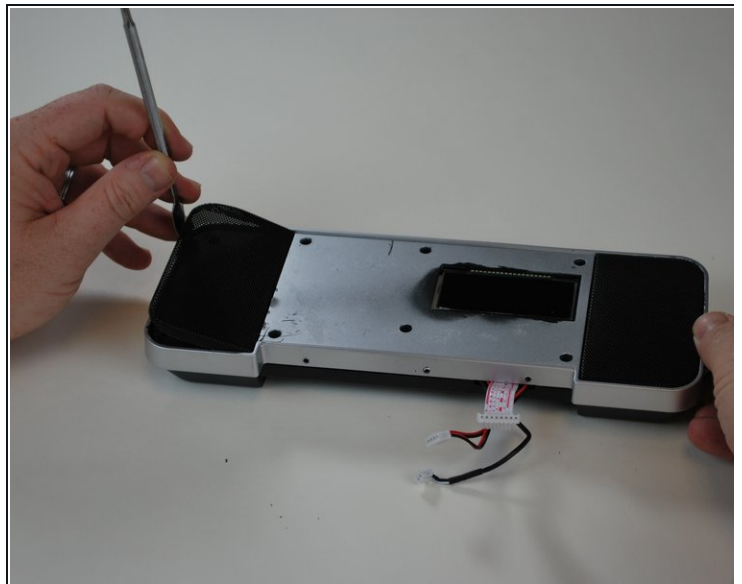
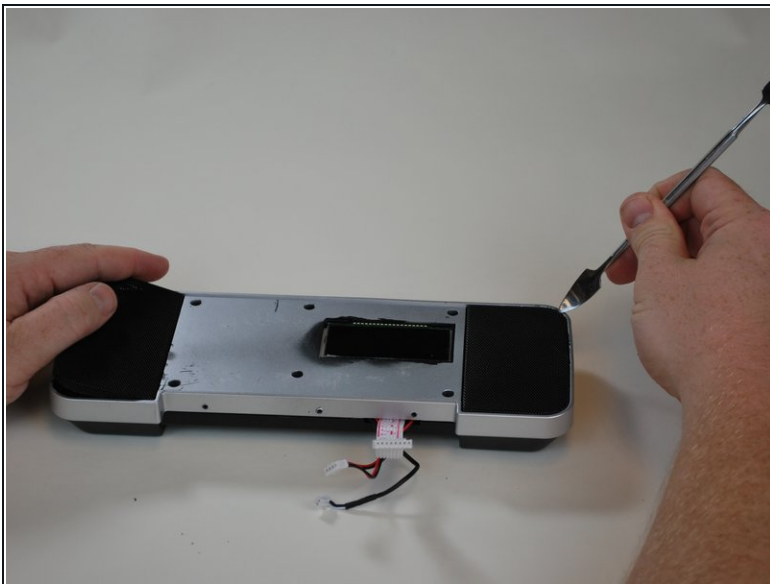
- Using the metal spudger, gently lift the face plate away from the display.

Step 12



- Once the face plate is removed, use the Phillips screwdriver to remove the six screws shown here.

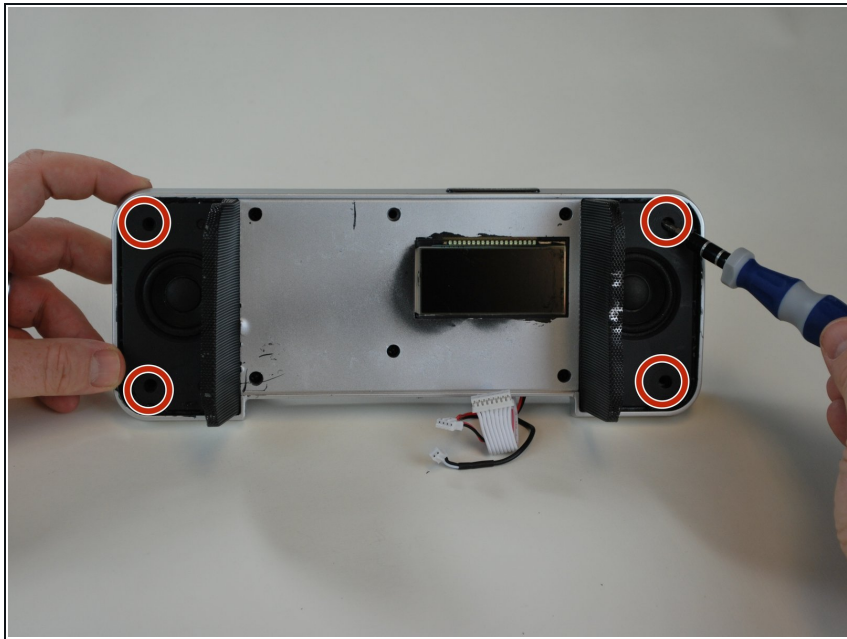
Step 13



- Using the metal spudger, lift the speaker grilles from the display.

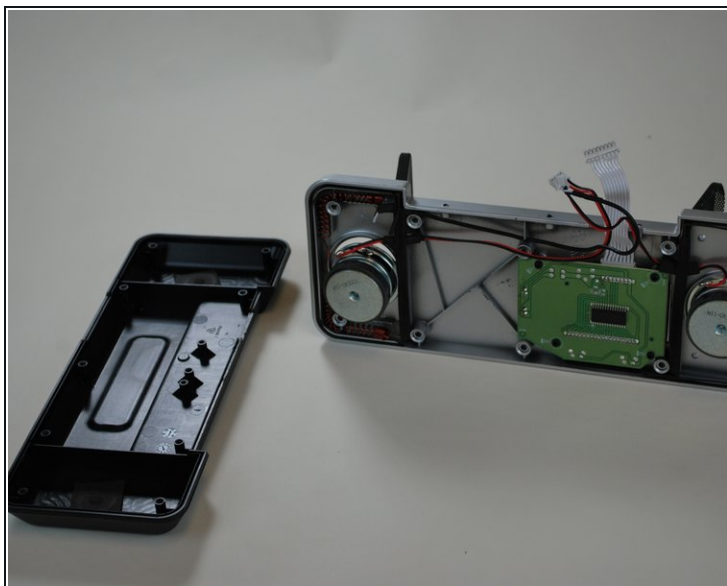
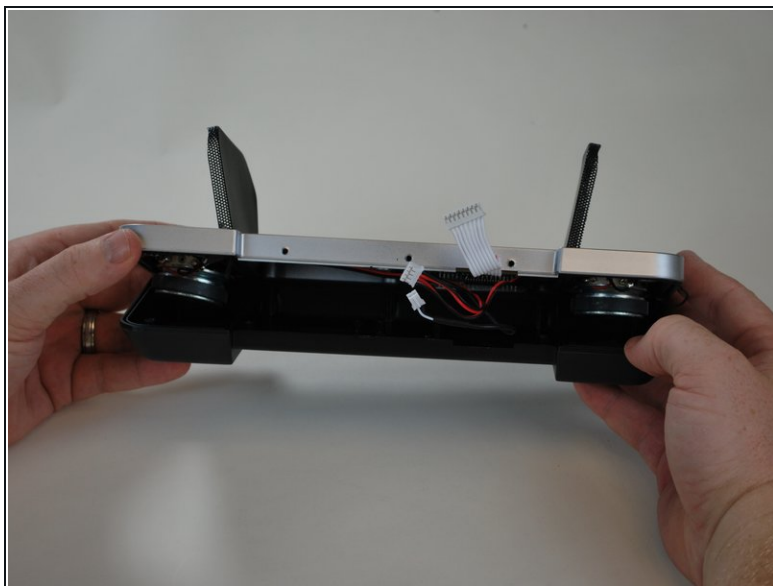
i The speaker grilles will hinge on the side closest to the display.

Step 14



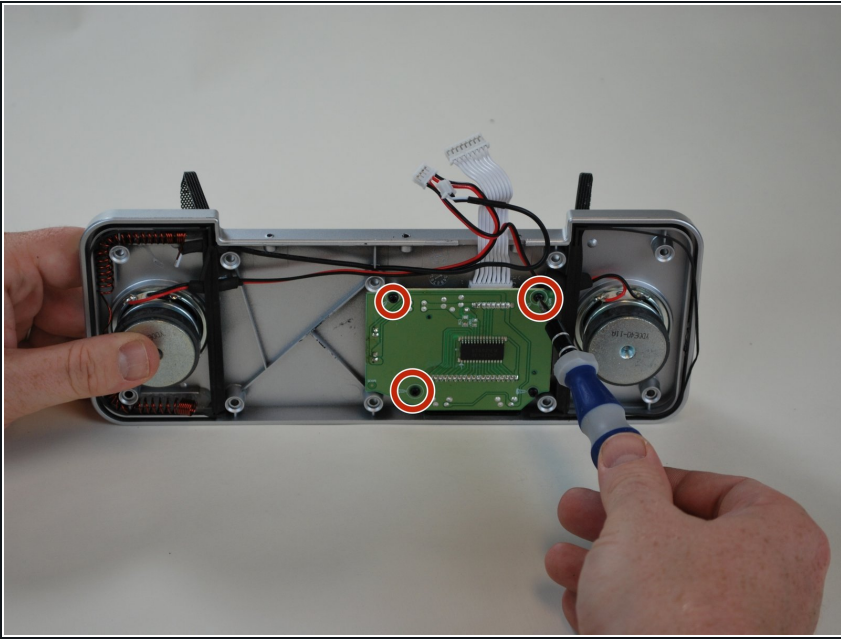
- Using the Phillips screwdriver, remove the four screws shown here.

Step 15



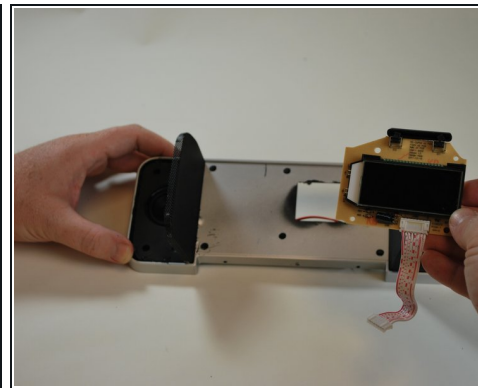
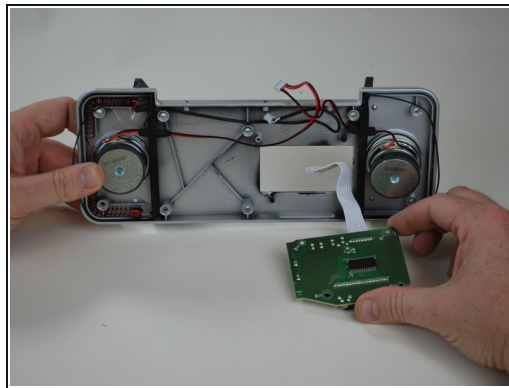
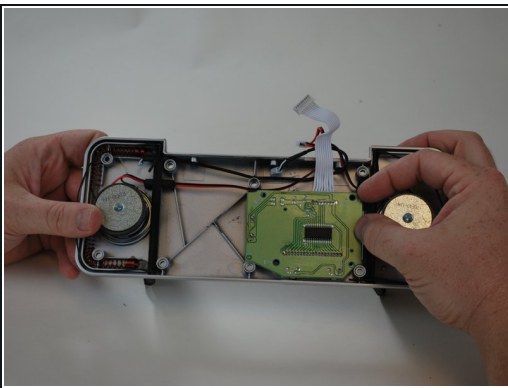
- The two pieces of the display should easily separate.

Step 16



- Using the Phillips screwdriver, remove the three screws shown here.

Step 17



- The digital display should now be easy to remove.
- Replace with new part.

To reassemble your device, follow these instructions in reverse order.