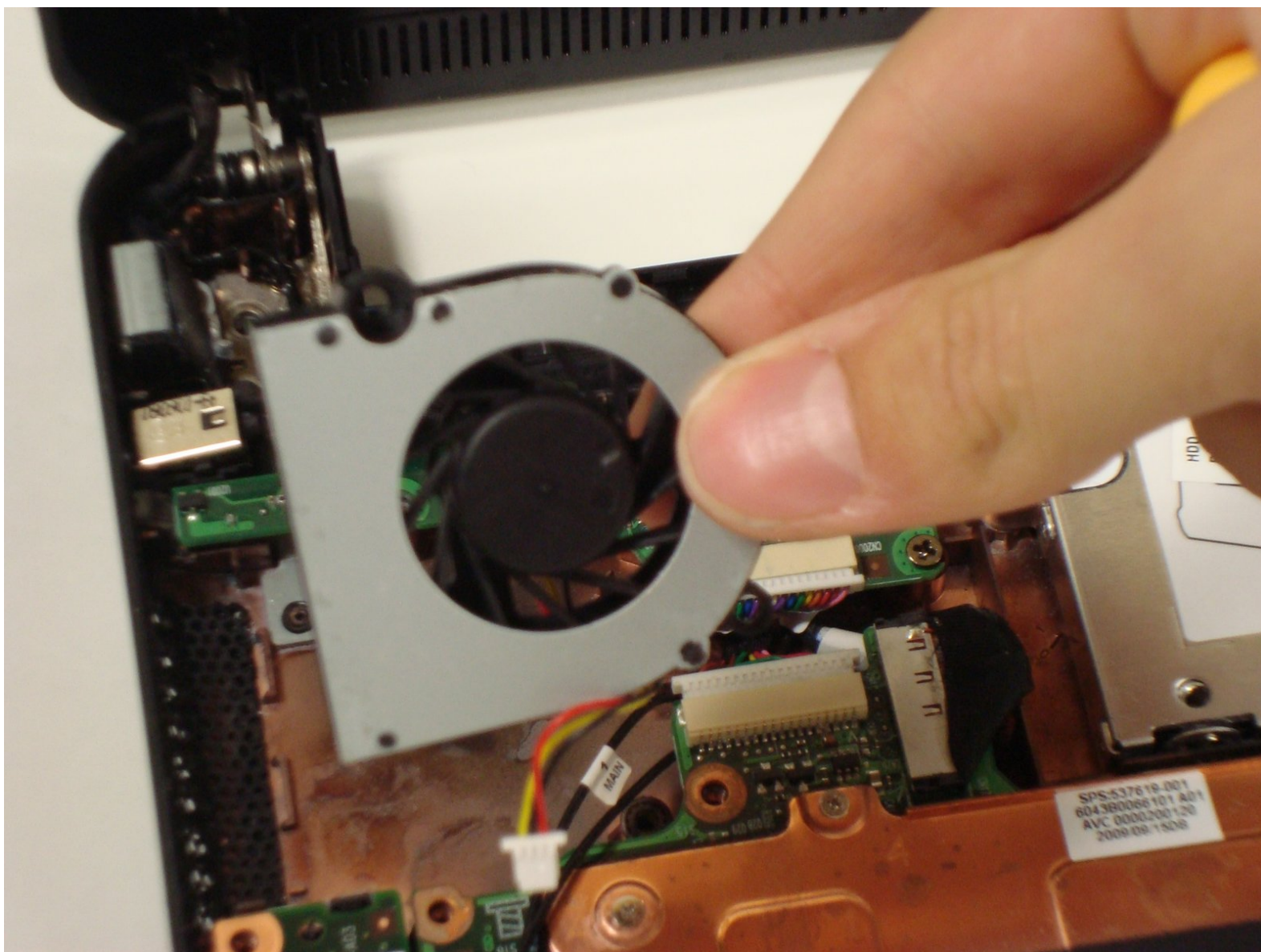




Disassembling Compaq Mini 110 Fan

Abolish the noisy bugger and put in a...

Written By: alea



INTRODUCTION

Abolish the noisy bugger and put in a powerfully quiet cooling device.

TOOLS:

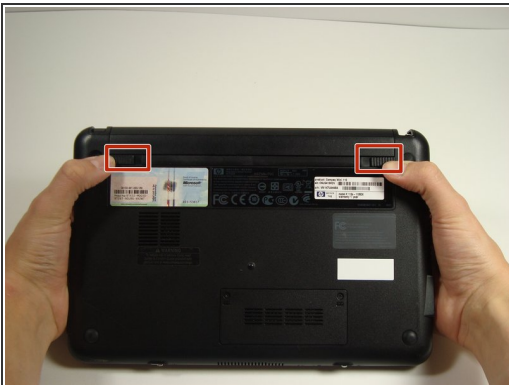
- [Phillips #0 Screwdriver](#) (1)
 - [Spudger](#) (1)
-

Step 1 — Battery



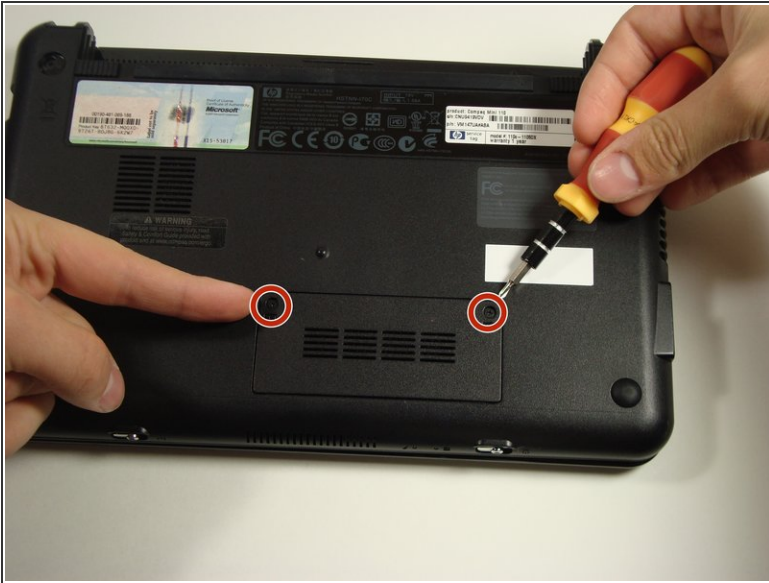
- Locate the battery and the battery tabs on the bottom of the Compaq Mini.

Step 2



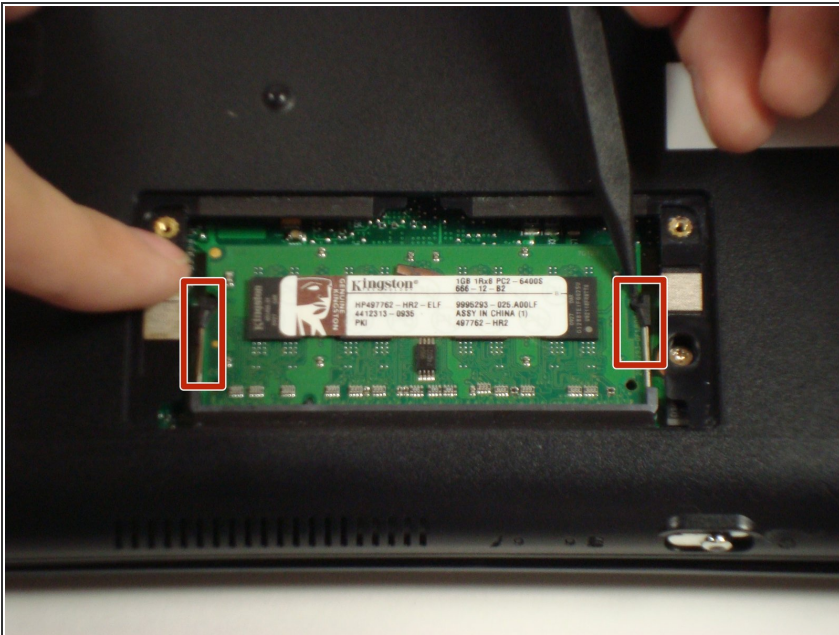
- Push both tabs inward simultaneously and slide the battery out.

Step 3 — RAM



- Use a Philips #0 screwdriver to unscrew the two screws covering the memory compartment on the bottom of the laptop and remove the cover.

Step 4



- Push out the side tabs simultaneously and pull out the old RAM module.
- ☑ When inserting a new RAM stick, be sure to evenly insert the gold pins in the same orientation that the old module was removed. While sliding the module in, press the side tabs in place.

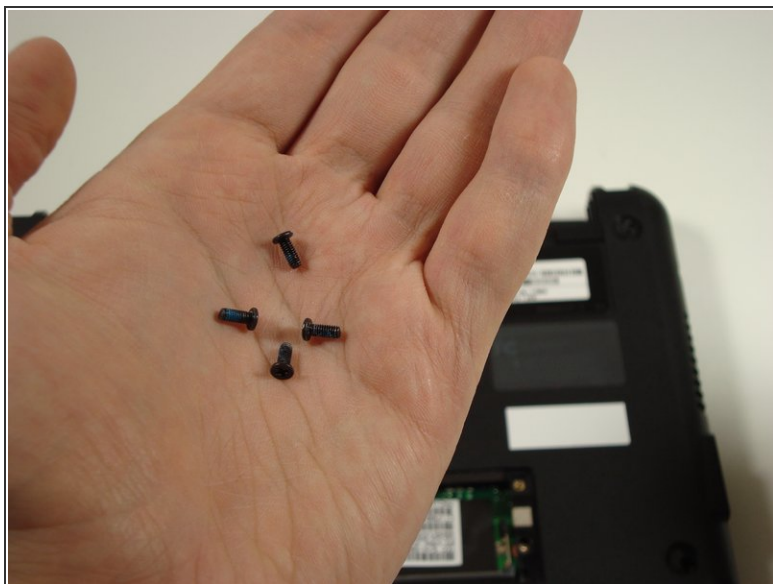
Step 5 — Keyboard



- Remove the rubber pads located on the corners of your Compaq Mini.

⚠ There may be junk underneath it. This is residue left from the glue that held on the rubber pad. Just scrape it away to find the screw.

Step 6



- Unscrew all the corner screws. There are four total, one under each rubber pad.

Step 7



- Unscrew the screw for the bottom case located in the RAM compartment.

Step 8

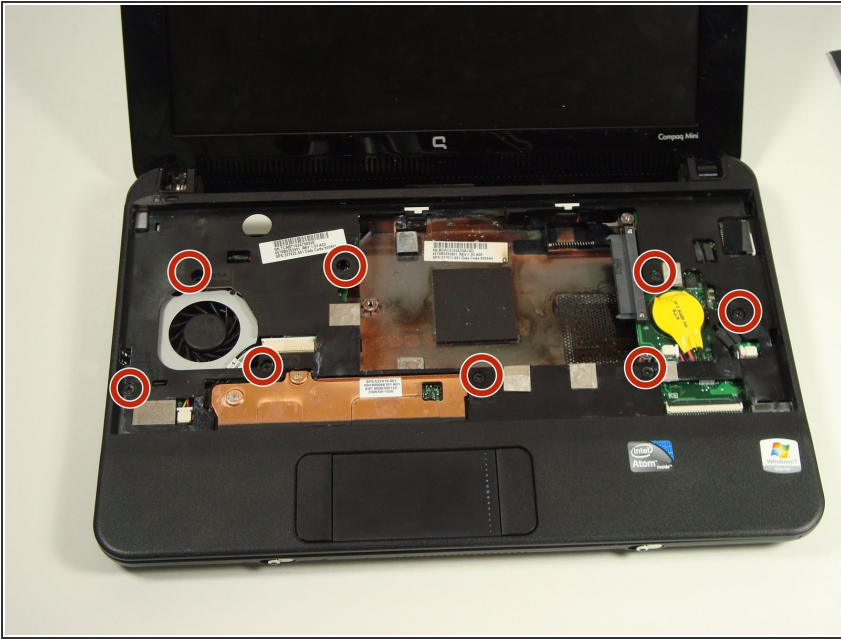


- Remove the three screws in the silver tabs at the back of the keyboard.

i These are located at the back of the base under the screen.

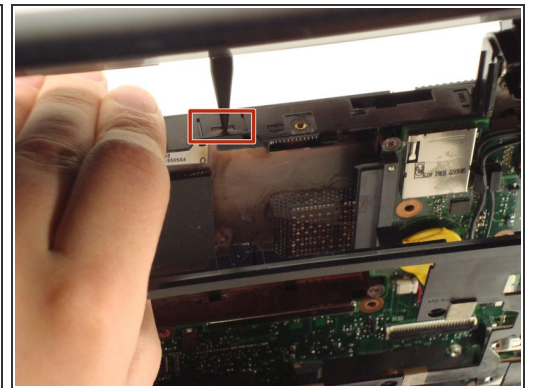
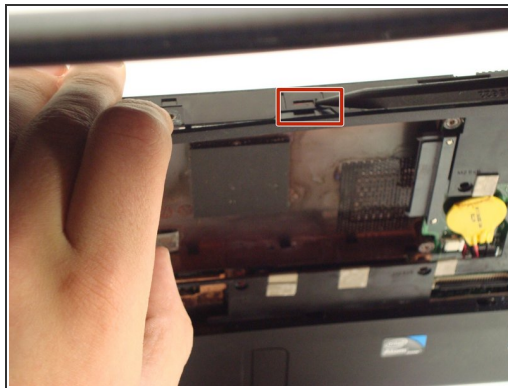
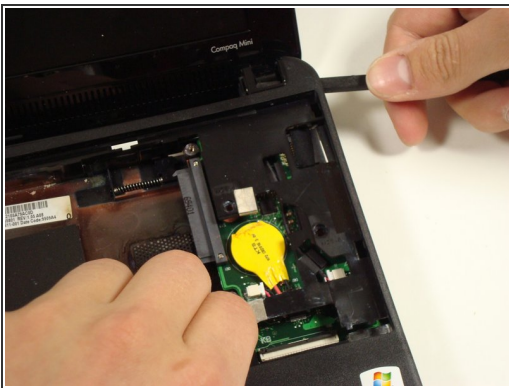
- Lift the keyboard away from the laptop.

Step 9 — Top Cover



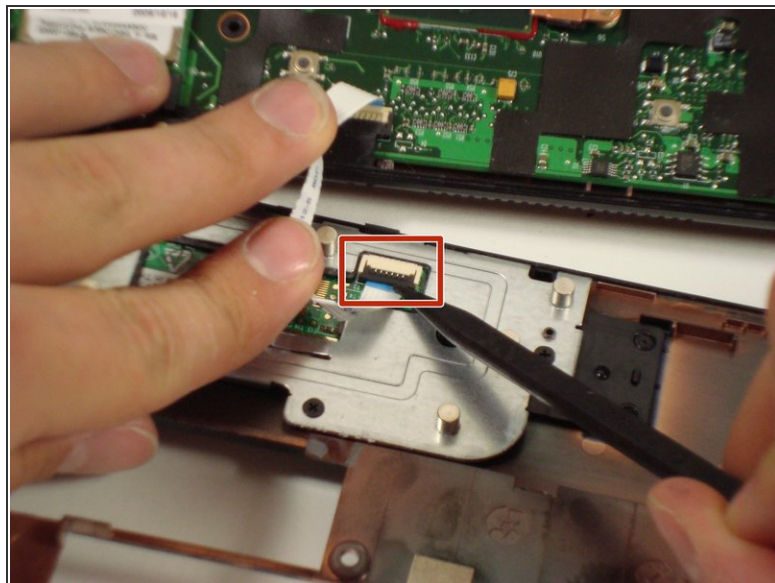
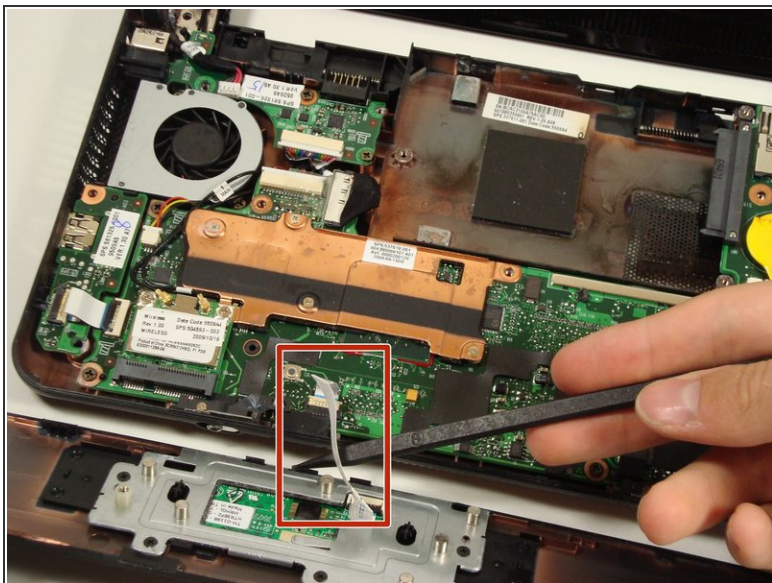
- Remove the eight screws that are from the plastic top cover.

Step 10



- Pry up the top plastic cover using a spudger.
- These two tabs under the screen need to be pushed in with a spudger.

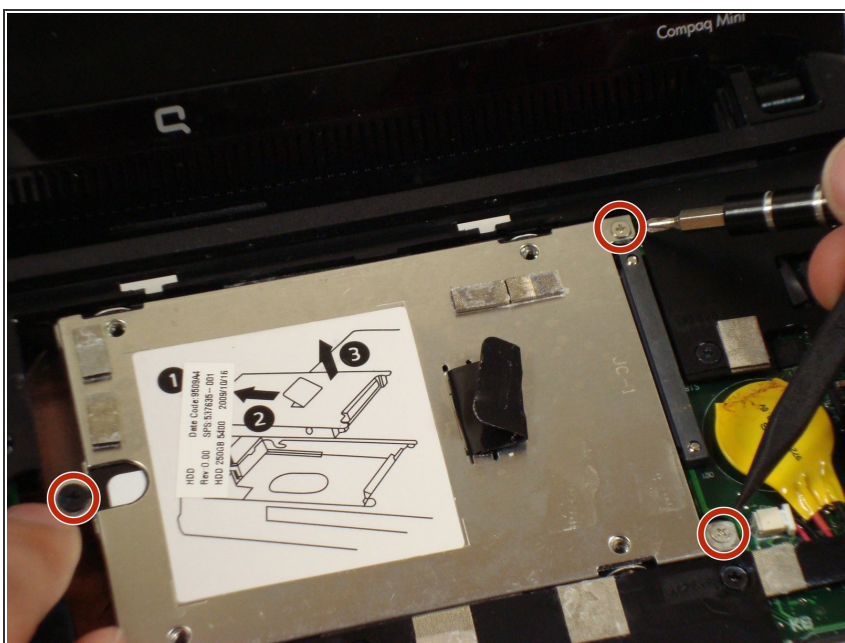
Step 11



- Remove the cable by carefully pulling it up.

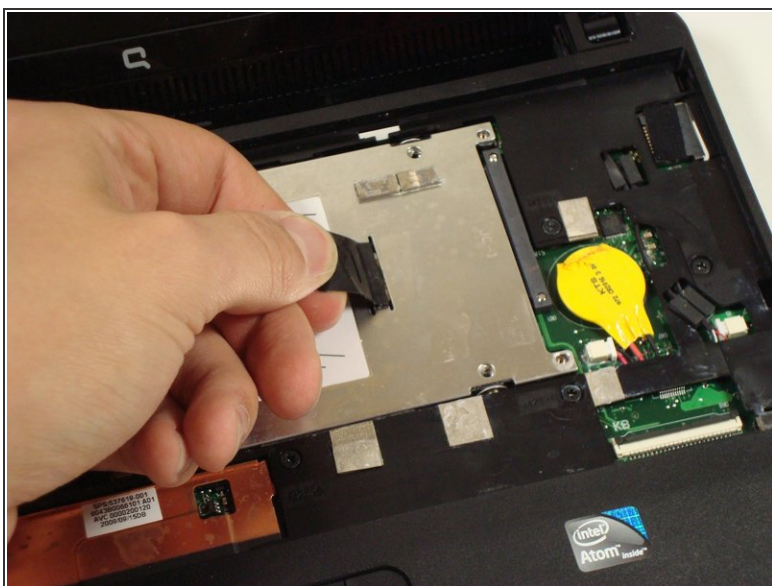
⚠ Be careful when lifting up the cover because the track pad is still attached.

Step 12 — Hard Drive



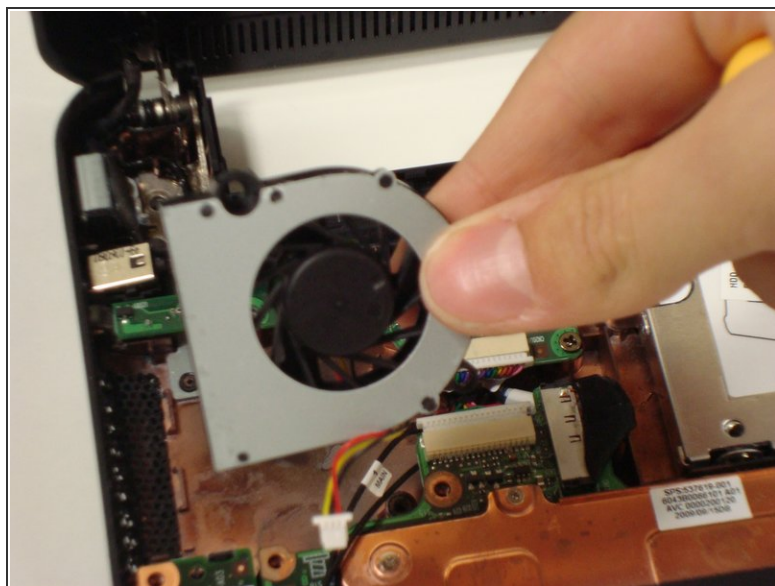
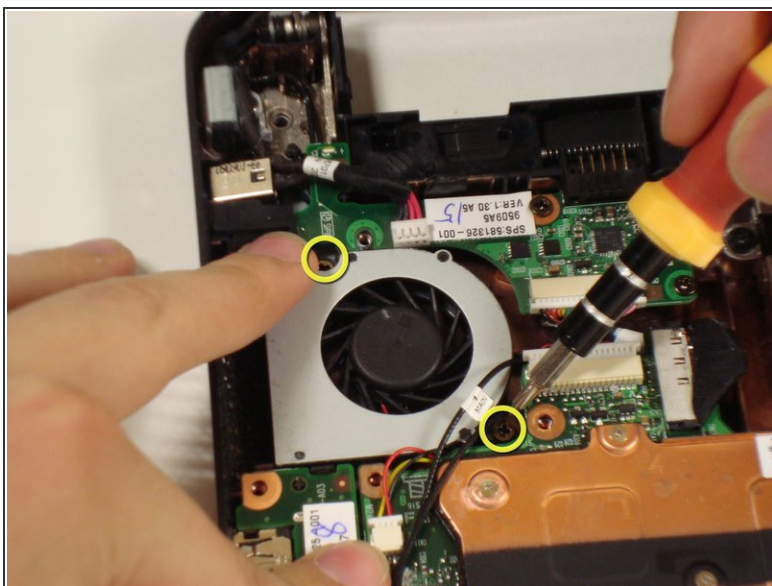
- Remove the three screws holding the panel in place.

Step 13



- Pull up on the tab to remove the hard drive.

Step 14 — Fan



- Remove the two screws holding the fan in place.
- ⓘ There is still a cable attached to the fan so be sure to pull that out as well.

To reassemble your device, follow these instructions in reverse order.