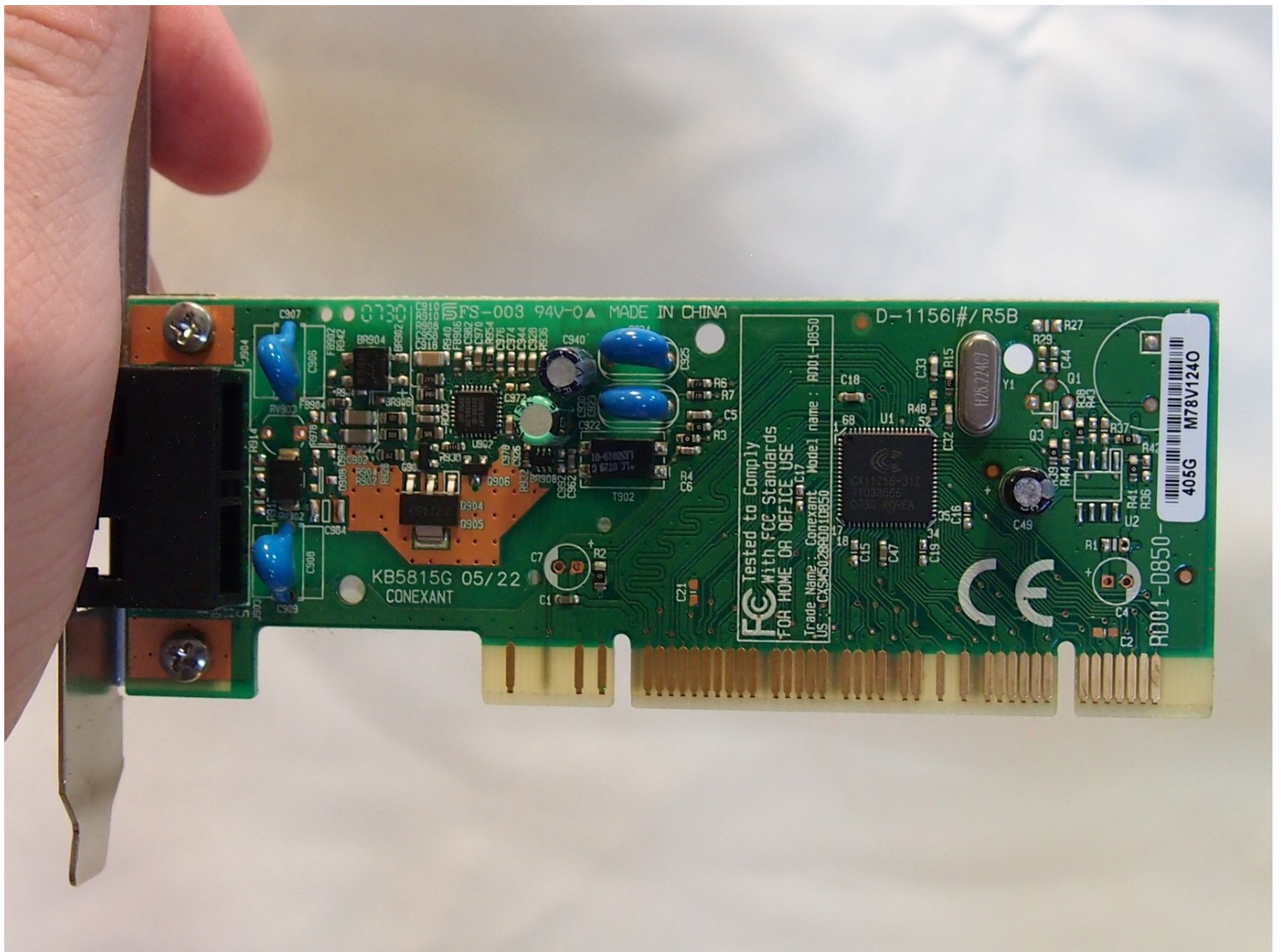




# Dell Inspiron 530 DCMF PCI Slot:Dial up modem Replacement

The Peripheral Component Interconnect (PCI)...

Written By: Drew Cunningham



# INTRODUCTION

The Peripheral Component Interconnect (PCI) slot is a built-in slot that allows the attachment of various hardware components on the motherboard of a computer. It can hold different types of cards: network cards, modems, sound cards, disk controllers and other peripherals. As well as a Wi-Fi receiver or Bluetooth.

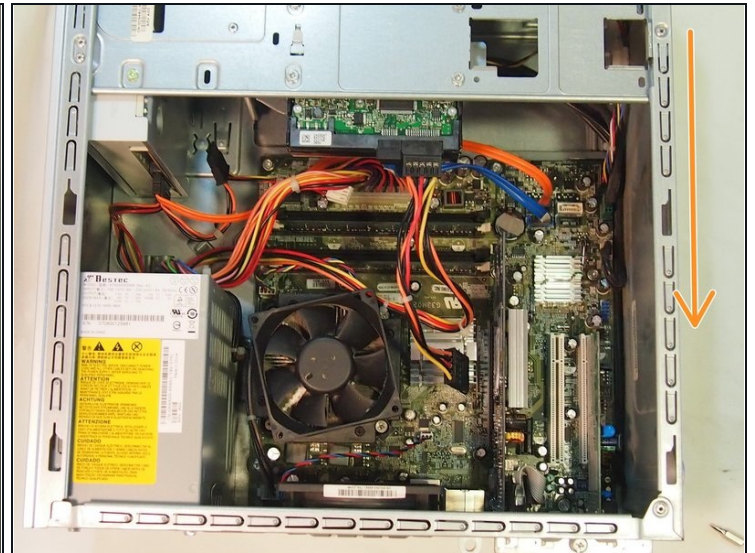
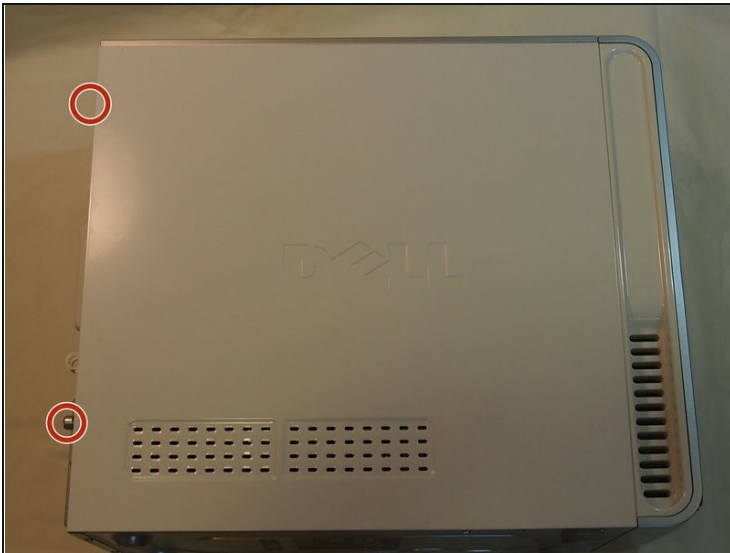
---

## TOOLS:

Screwdriver (1)

---

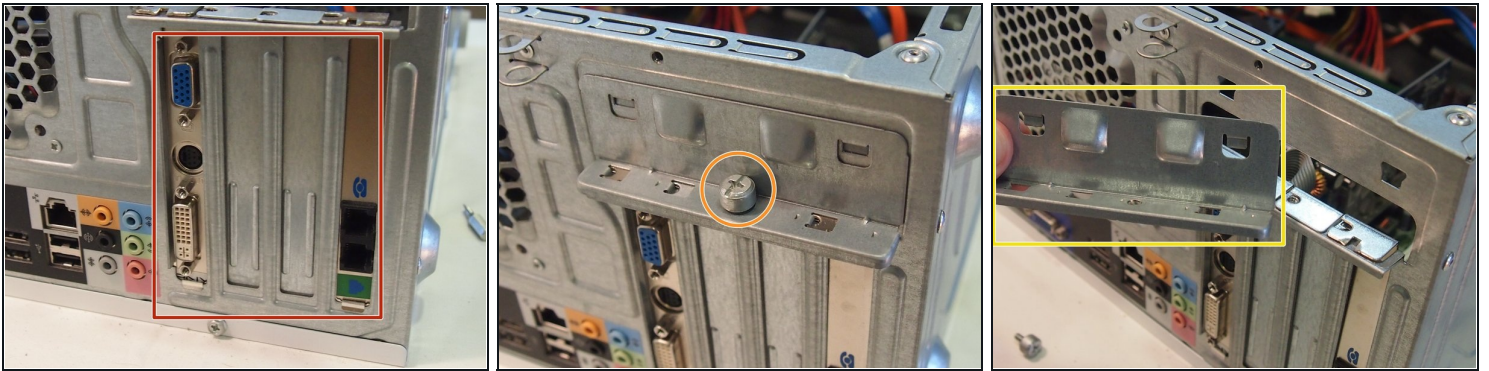
### Step 1 — PCI Slot: Dial up modem



- Unscrew the two large screws in the back holding on the side panel.
- Slide the panel backwards to remove it.

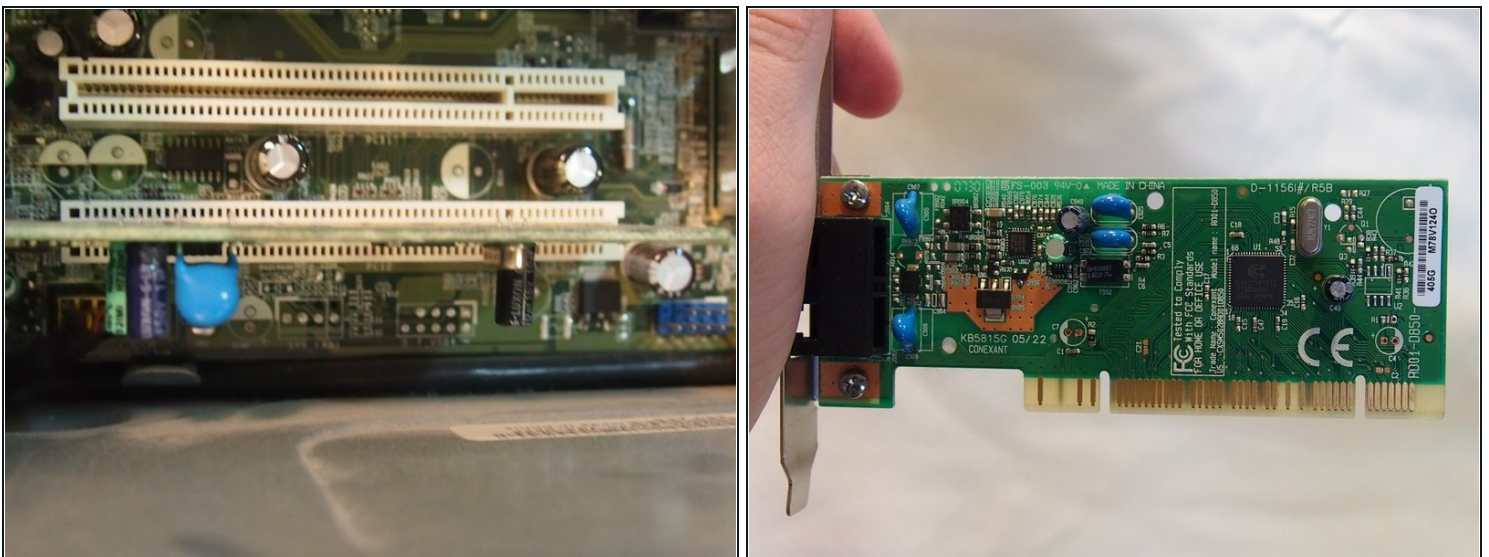


## Step 2



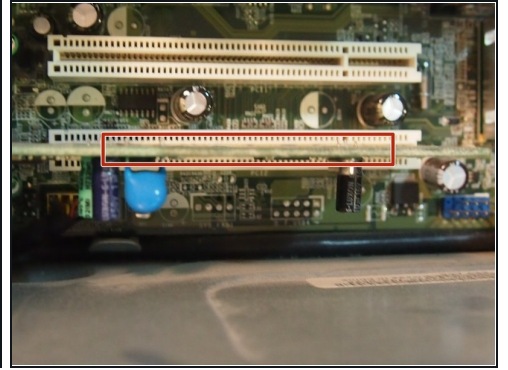
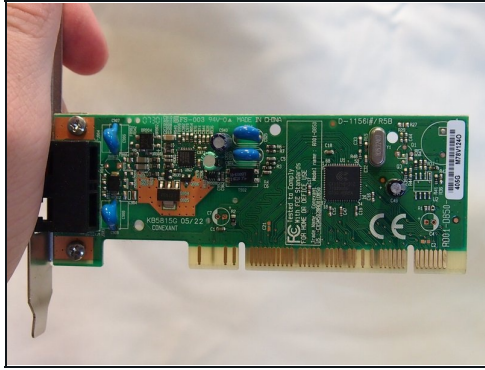
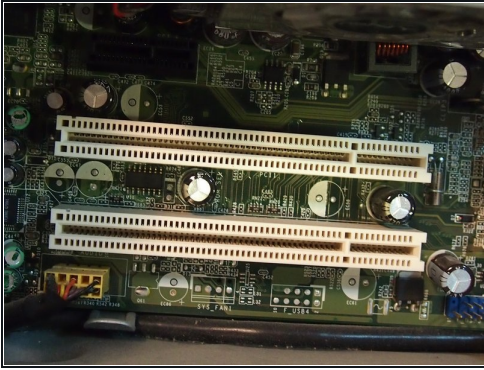
- The PCI slots are located at the bottom back of the computer.
- Unscrew the screw to release the metal piece that holds the cards in place.
- Remove metal piece.

## Step 3



- Slide the card in the PCI slot up and out.
- ① In this case, it is a dial up modem.

## Step 4



- Take the new card and slide it into the slot that you removed the old one out of.
- ☑ Remember to replace the metal piece you removed earlier to secure the cards in place.

---

To reassemble your device, follow these instructions in reverse order.