



# Insignia NS-CLIP02 30-Pin Connector Replacement

If your Insignia NS-CLIP02 is not connecting to...

Written By: Erik



## INTRODUCTION

If your Insignia NS-CLIP02 is not connecting to your Apple device, follow this guide to replace the 30-pin connector. The 30-pin connector transmits audio from the iPhone/iPod to the Insignia NS-CLIP02. A faulty 30-pin will result in distorted or no audio, and no charge coming into the connected device.

Before using this guide, be sure to inspect the spot in which the iPhone/iPod plugs into the device for debris that might be causing the audio issues. If you have another compatible device, be sure to test it on the 30-pin to be sure the iPhone/iPod is not the issue.

Before beginning be sure that the Insignia NS-CLIP02 is not plugged in to any socket, and disconnect any device connected to the 30-pin connector.

---

### TOOLS:

- [Screwdriver](#) (1)
  - [Metal Spudger](#) (1)
  - [iFixit Opening Tool](#) (1)
  - [Small Plastic Spudger](#) (1)
-

## Step 1 — 30-Pin Connector



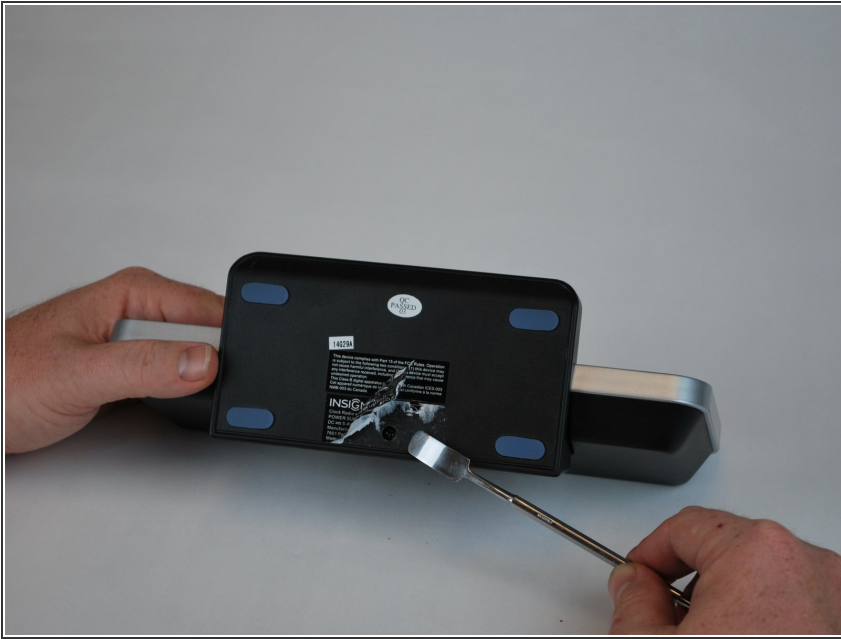
- Locate the bottom of the device.

## Step 2



- Begin by using the Metal Spudger to peel back the adhesive sticker and locate the screw beneath the sticker.

### Step 3



- Locate the 11mm screw beneath the sticker.

### Step 4



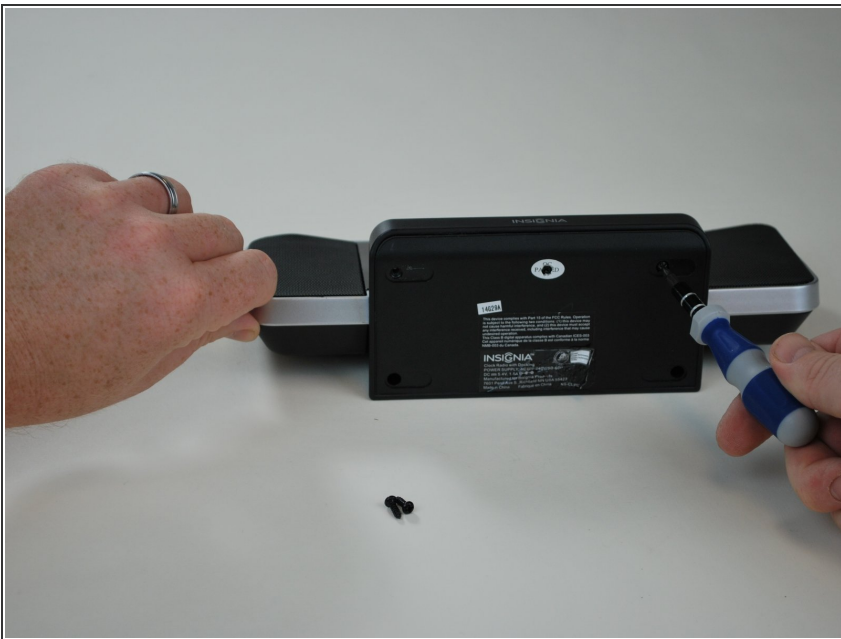
- Using the Plastic Spudger, peel off the adhesive gel stoppers.

## Step 5



- Continue peeling the rest of the gel stoppers from the bottom of the device.

## Step 6



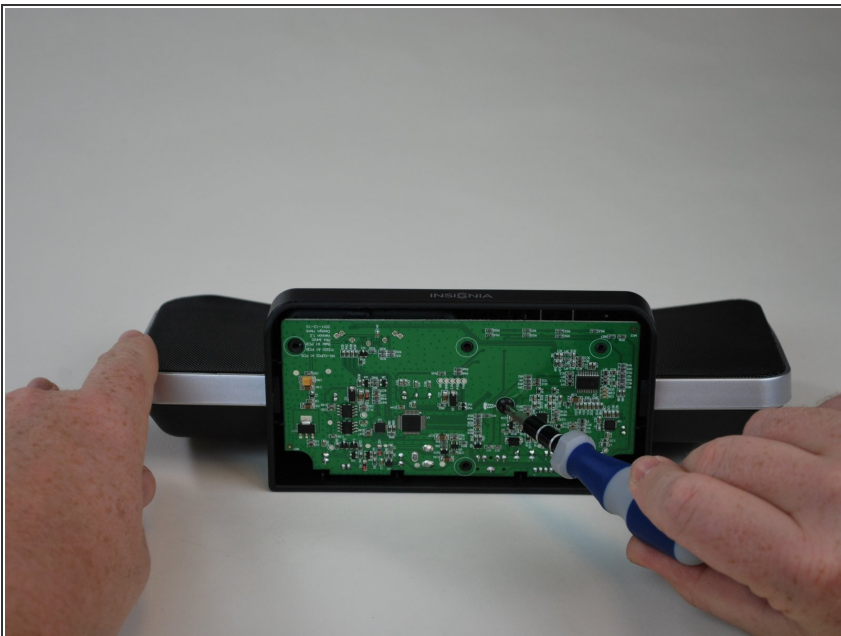
- Begin unscrewing the six 11mm screws with a Phillips head screw driver.

## Step 7



- Once you peel off the bottom from the device, you will see the motherboard.

## Step 8



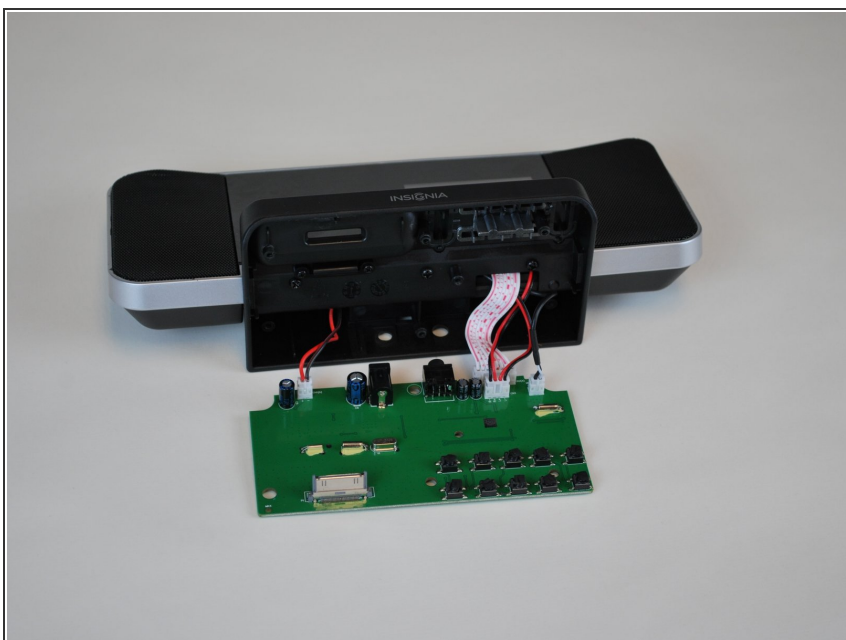
- Unscrew the 9.5mm screw located near the center of the motherboard with a Phillips head screw driver.

## Step 9



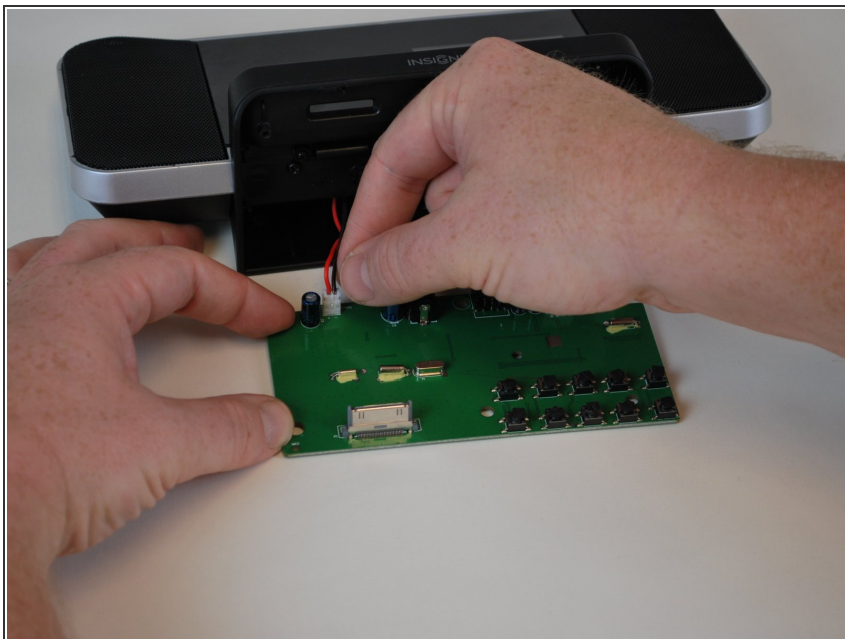
- Lift the motherboard from the device.

## Step 10



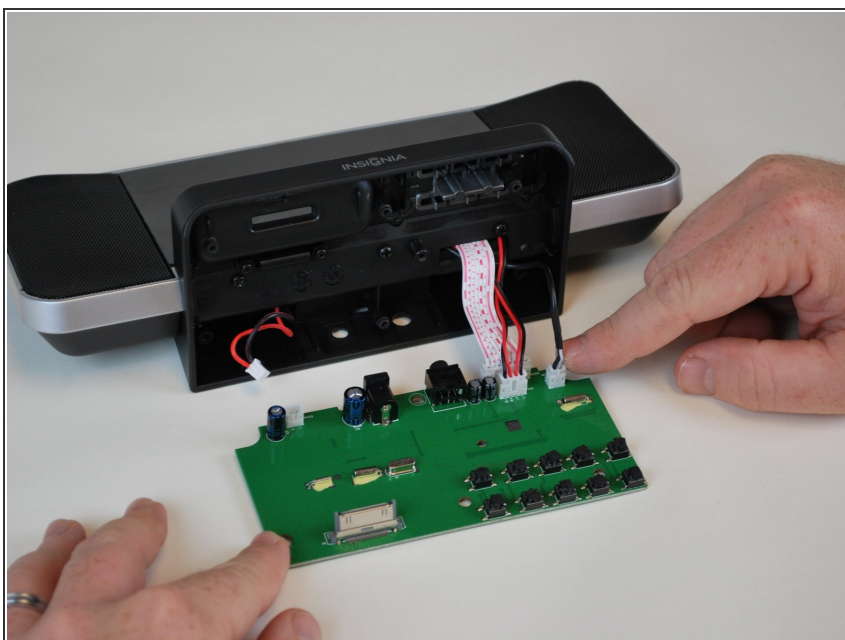
- Locate the four plugs connecting the motherboard to the rest of the device.

## Step 11



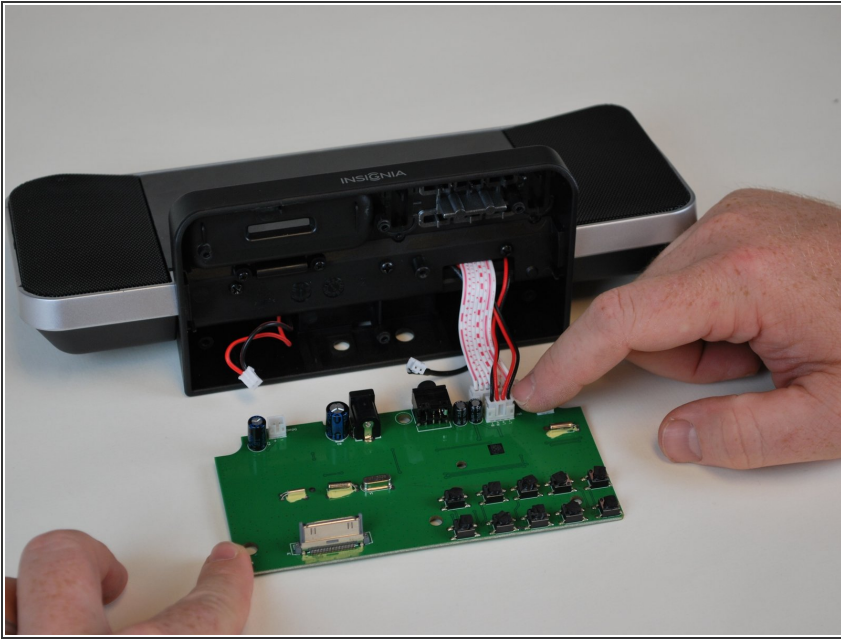
- Begin with removing the plug to your left.

## Step 12



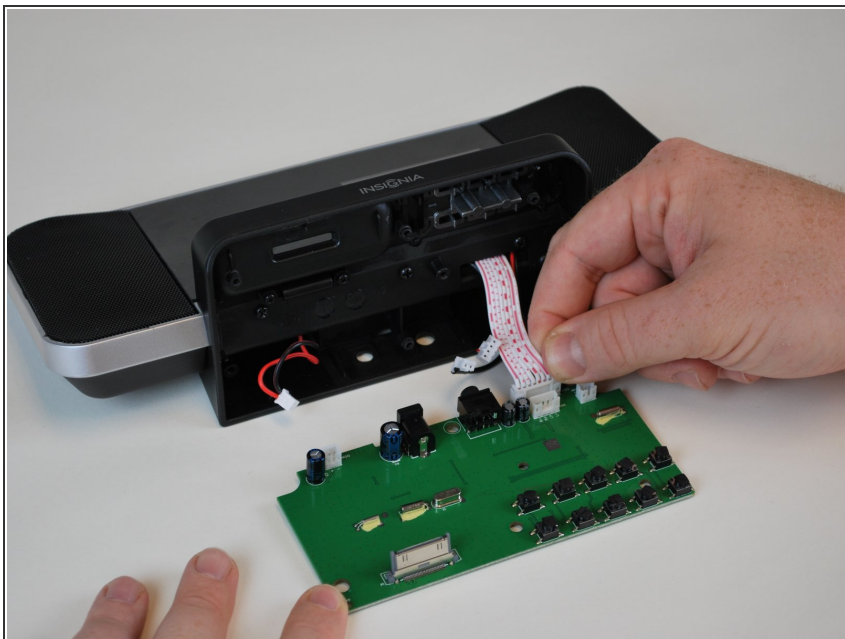
- Remove the plug to your right from the motherboard.

## Step 13



- Remove the plug in front of the LCD screen plug.

## Step 14



- Remove the LCD screen plug. Then, follow the previous instructions in reverse, replacing the old motherboard with the new one to fix the 30-Pin Connector.

To reassemble your device, follow these instructions in reverse order.