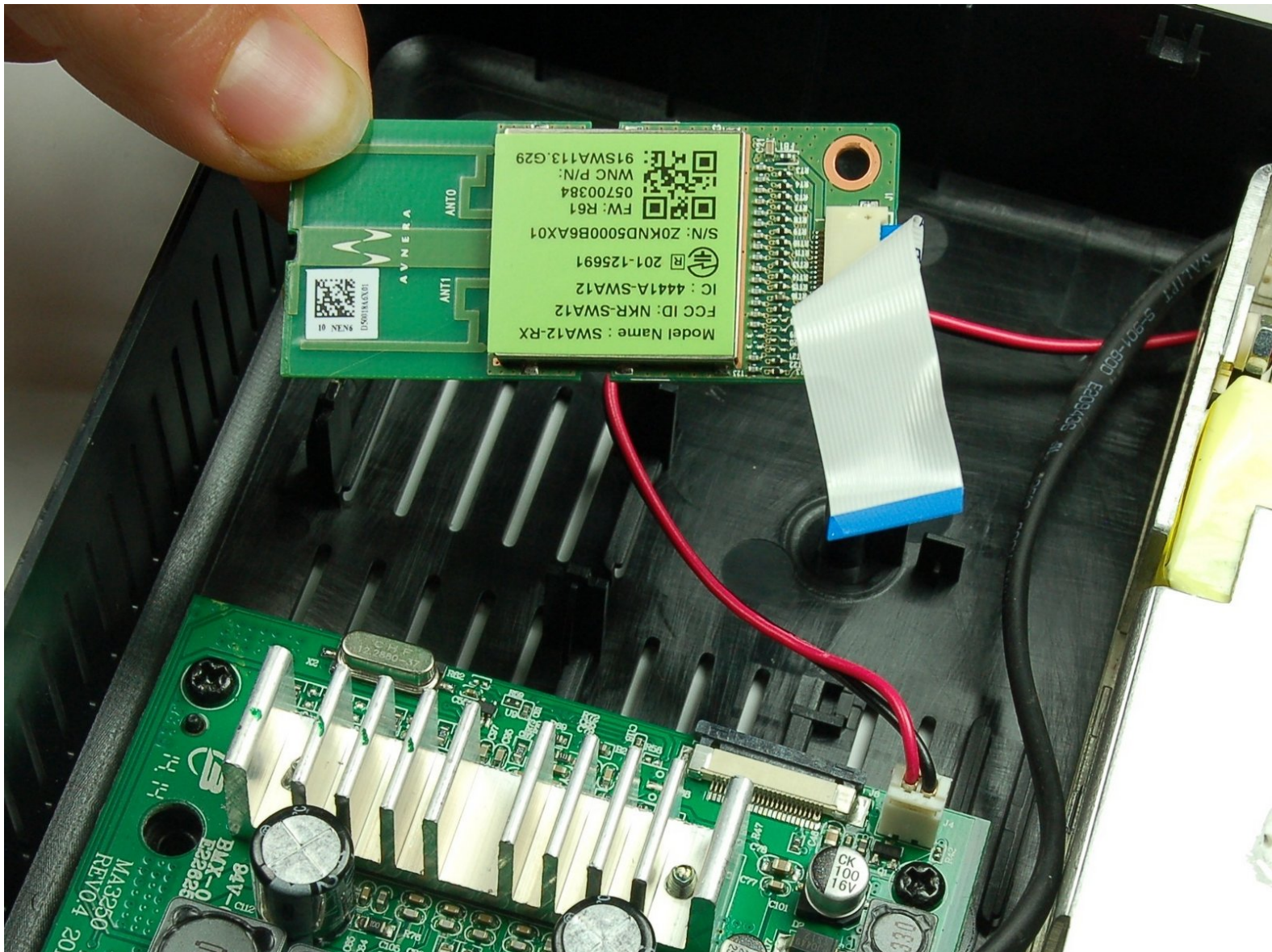




# Rocketfish RF-WHTIB-A Receiver Wireless Audio Module Chip Replacement

This guide will help Rocketfish RF-WHTIB-A replace the wireless audio module chip within the receiver.

Written By: Caitlin Charlton



This document was generated on 2020-11-23 11:13:48 AM (MST).

## INTRODUCTION

A sender that is unresponsive in connection mode may indicate a problem with the wireless connection chip within the device. Replacing a faulty chip can help restore the device's function. This guide will help users replace a faulty wireless module chip indicated by an unresponsive connection between the sender and receiver devices.



### TOOLS:

- [Phillips #1 Screwdriver](#) (1)
  - [Tweezers](#) (1)
-

## Step 1 — How to Open the Rocketfish RF-WHTIB-A Receiver



- Remove the 4 rubber tabs on the bottom side of the receiver.

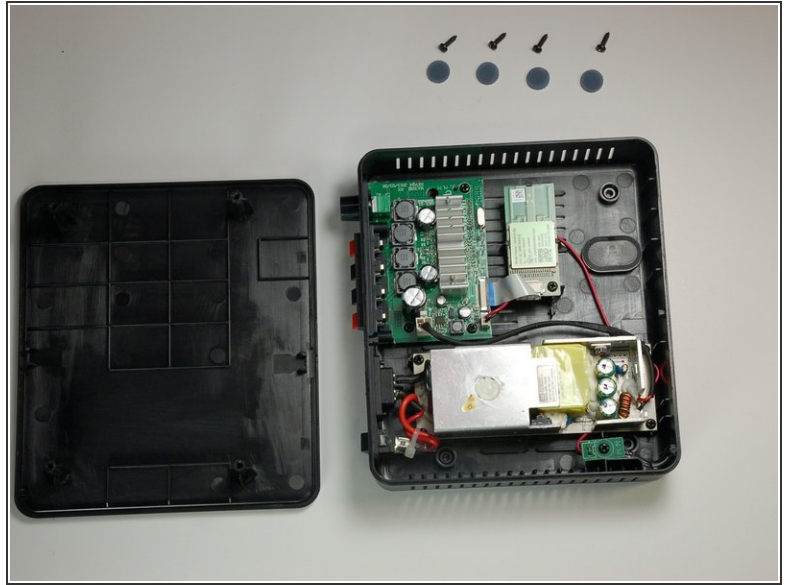
## Step 2



- Unscrew the four 12 mm screws on the bottom side of the receiver.
- ⓘ Use a Phillips #1 screwdriver for this step.

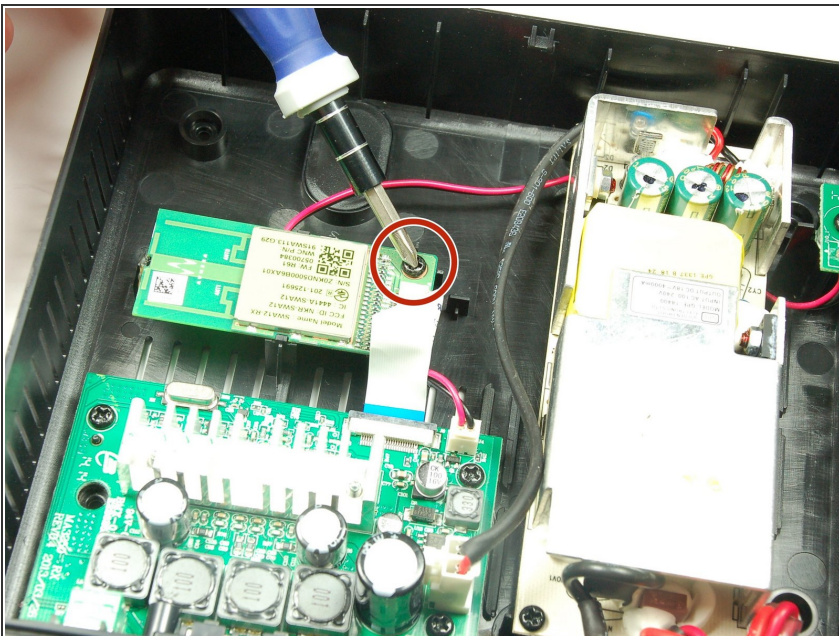


## Step 3



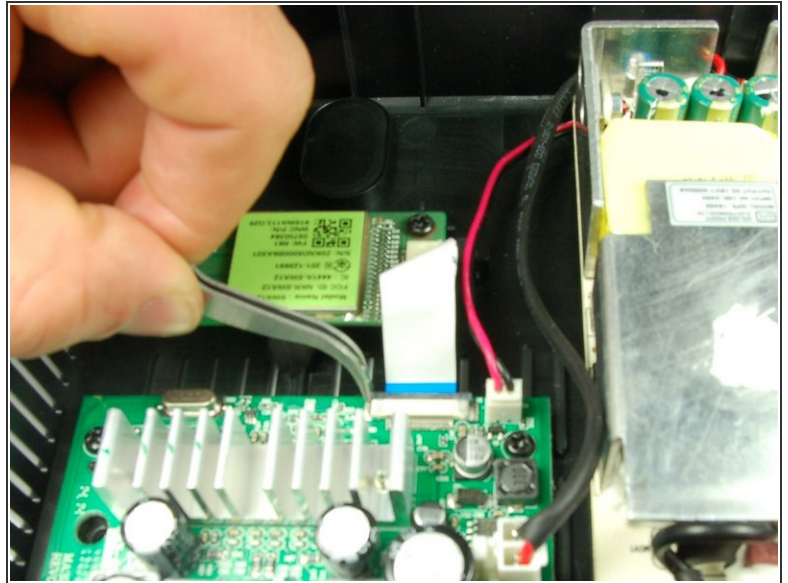
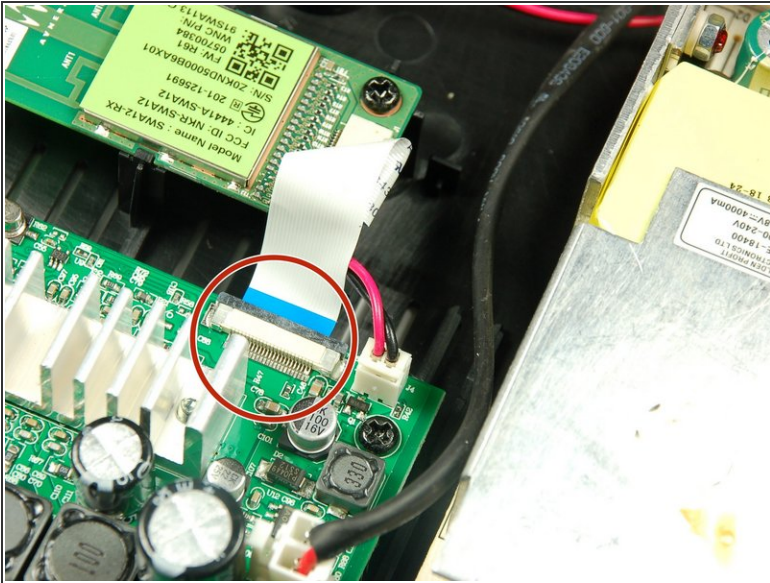
- Remove top casing from the receiver.
- ⓘ The receiver top casing is difficult to remove. Internal clasps may have to be broken in order to remove the top casing (this will not effect the device's function)

## Step 4 — Receiver Wireless Audio Module Chip



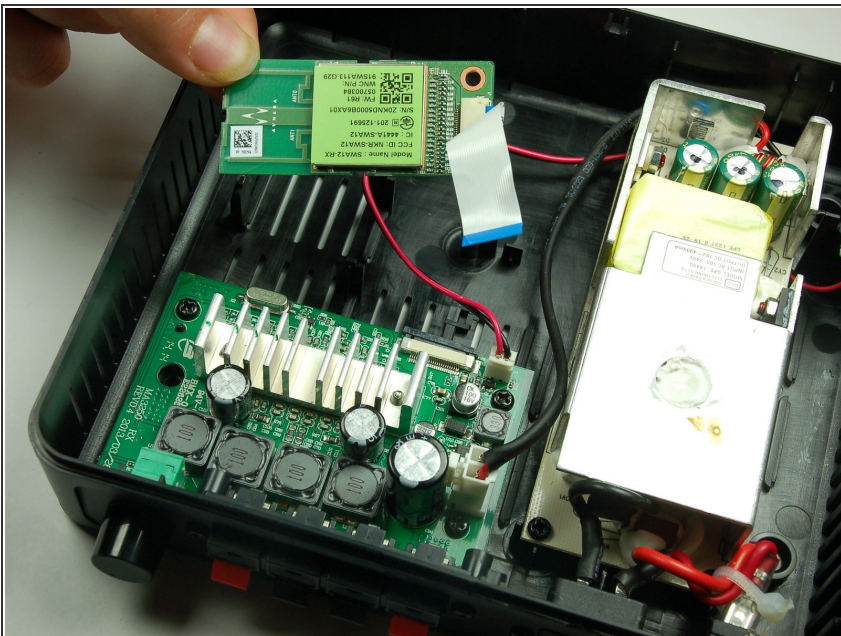
- Unscrew the 10 mm screw holding the wireless audio module.

## Step 5



- Slide the black retaining flap securing the ribbon cable away from the white bar.
- i** There should be only a small space between the white bar and black retaining flap.
- i** You may want to use tweezers for this step.

## Step 6



- Using your fingers, slide the ribbon cable out from the under the black retaining flap to completely disconnect it from the device.

To install the new wireless audio module chip, follow these instructions in reverse order.