



# Dell Inspiron 15R Hard Drive Replacement

This guide will show you how to replace your hard drive.

Written By: Trixie Gonzalez



# INTRODUCTION

Demonstrating step-by-step this guide will show you how to replace your hard drive.



## TOOLS:

- [Phillips #0 Screwdriver](#) (1)
- [Spudger](#) (1)



## PARTS:

- [250 GB SSD](#) (1)
- [500 GB SSD](#) (1)
- [1 TB SSD](#) (1)

## Step 1 — Battery



- Turn the device over and locate the battery.

## Step 2



- Place thumbs on each latch and push outwards.



### Step 3



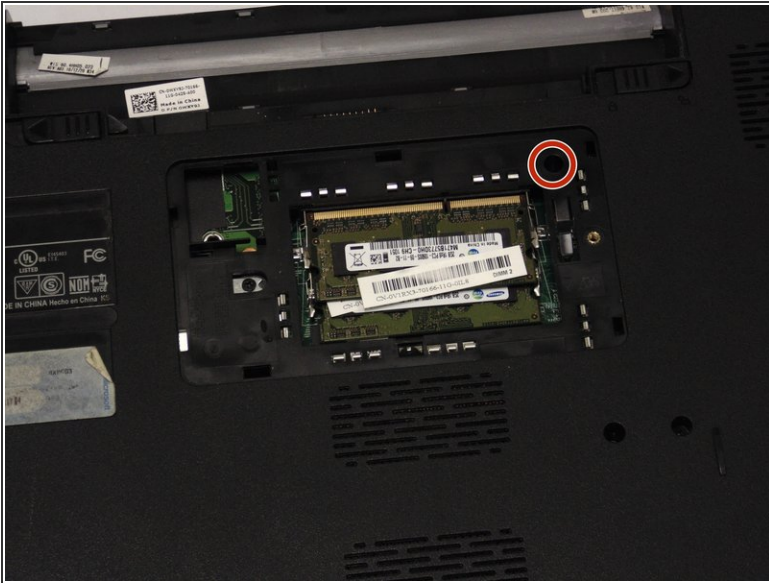
- Push and slide the battery away from you.

### Step 4 — Keyboard



- Locate the RAM compartment and the screw on the right hand side. Remove the cover.

## Step 5



- Locate and remove the 2.5 mm x 5 mm screw on the upper right hand side of the compartment.

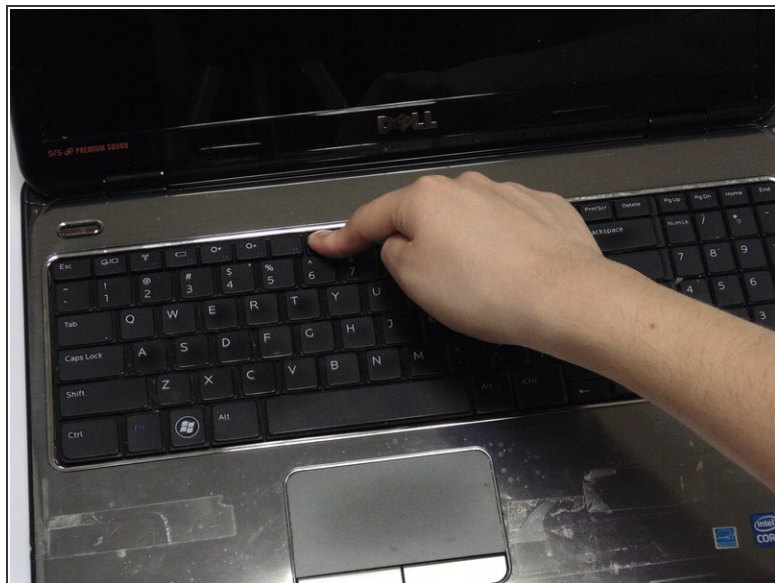
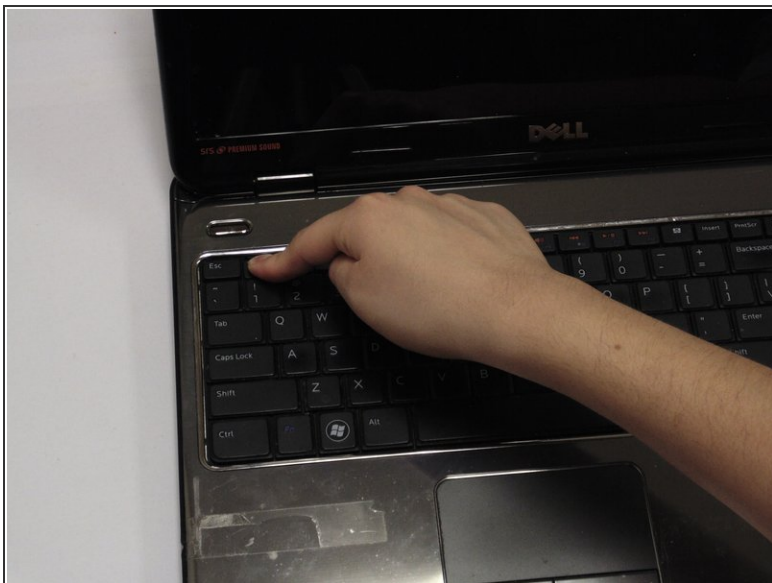
## Step 6



- Turn the device around and open it up.

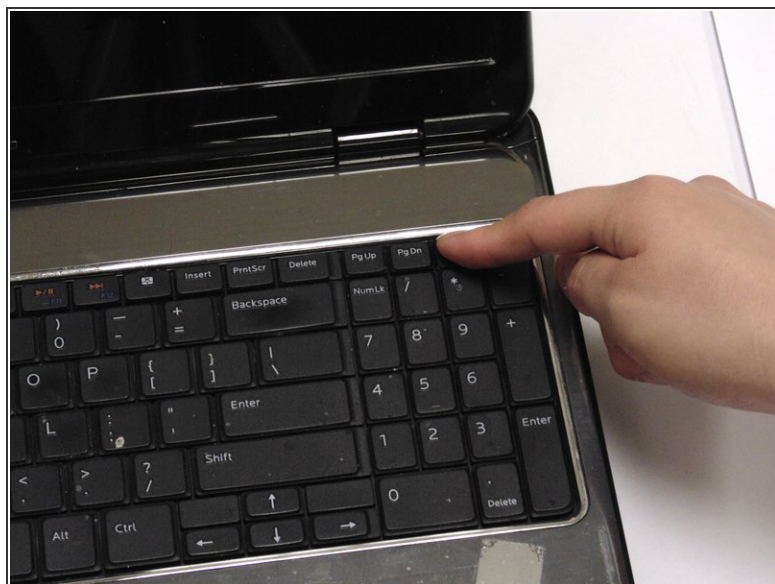
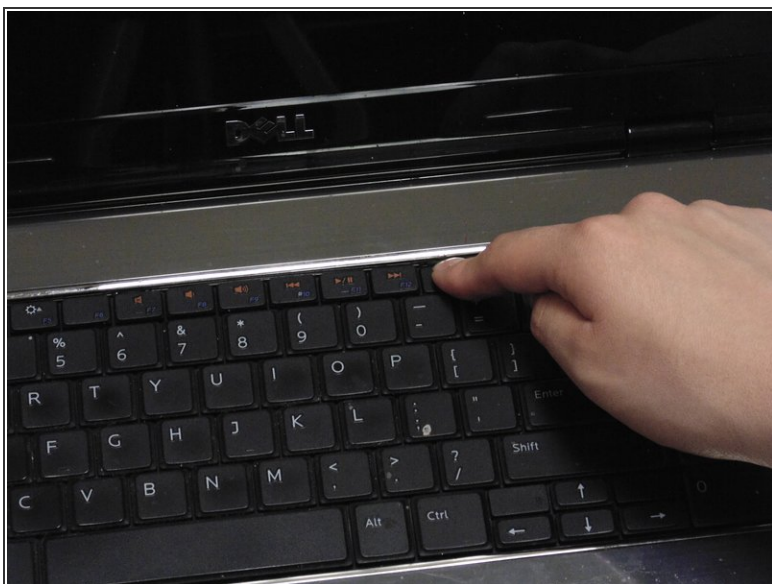


## Step 7



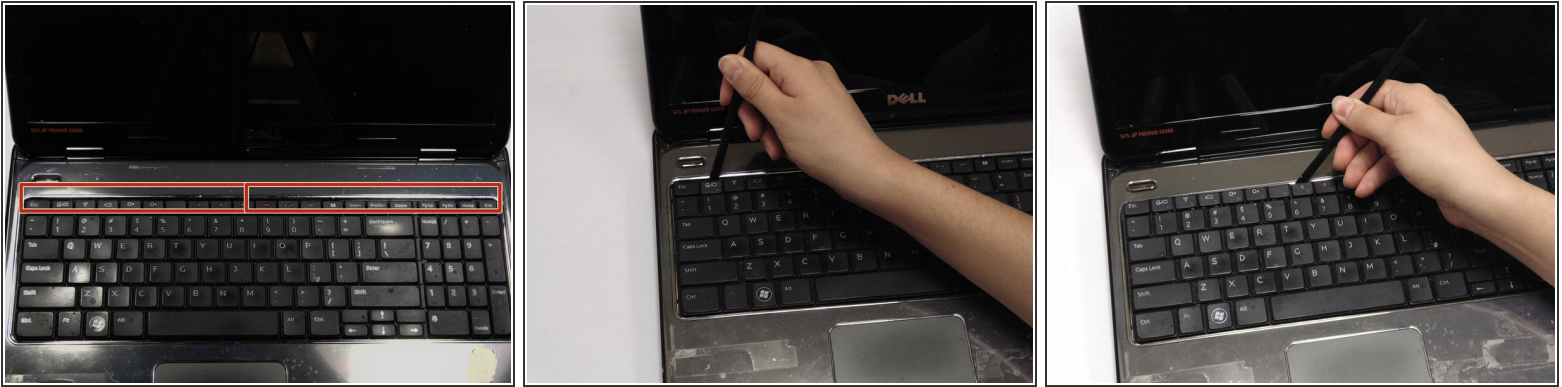
- Using your index finger, push down on the F1 and F7 keys.

## Step 8



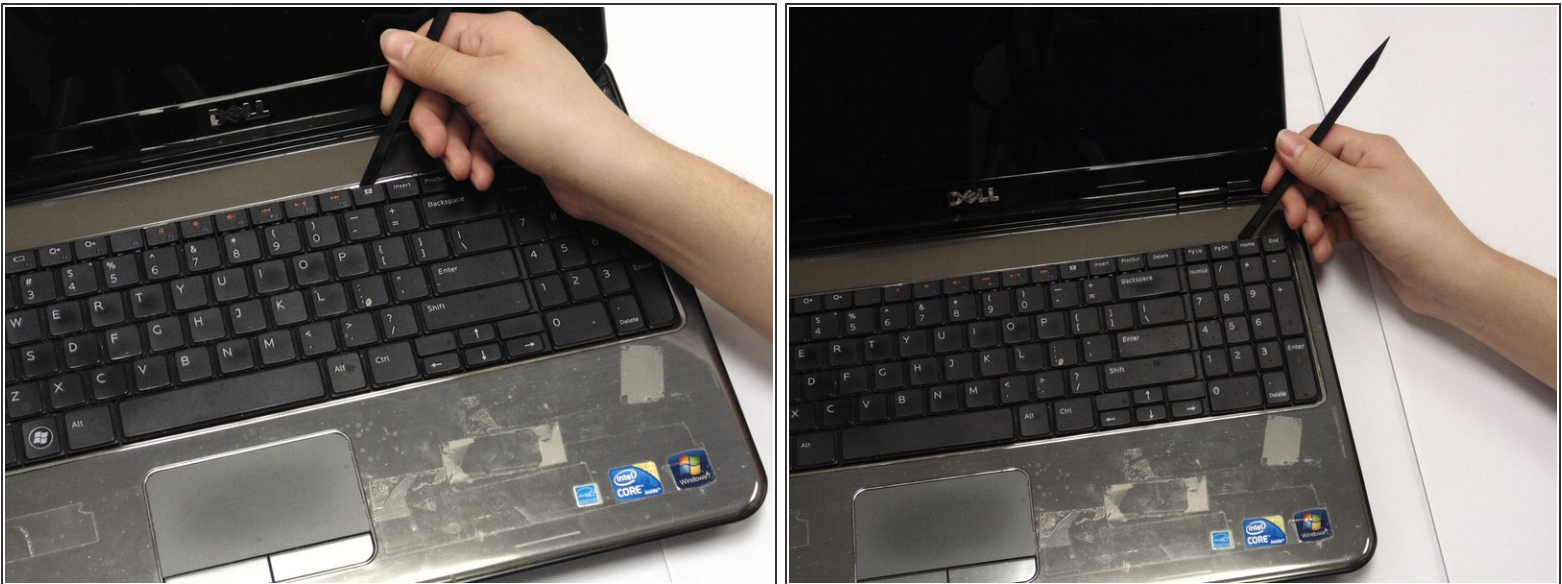
- Using your index finger, push down on the x icon and Home keys.

## Step 9



- Locate the keyboard lining (between the black and silver).
- Place your spudger between the keyboard lining behind the F1 and F7 keys and pull up.

## Step 10



- Place your spudger between the keyboard lining behind the x icon and Home keys and pull up.

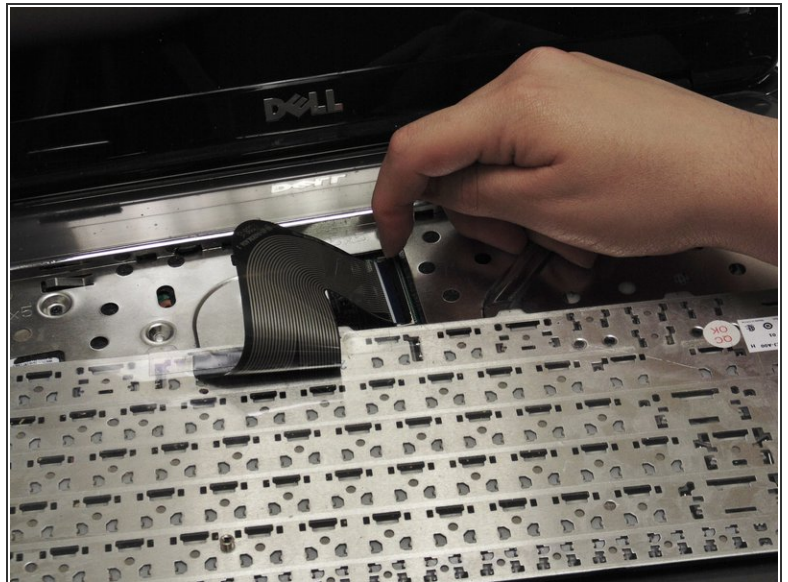


## Step 11



- Carefully pull and turn the keyboard over.

## Step 12



- Lift the black lever.



## Step 13



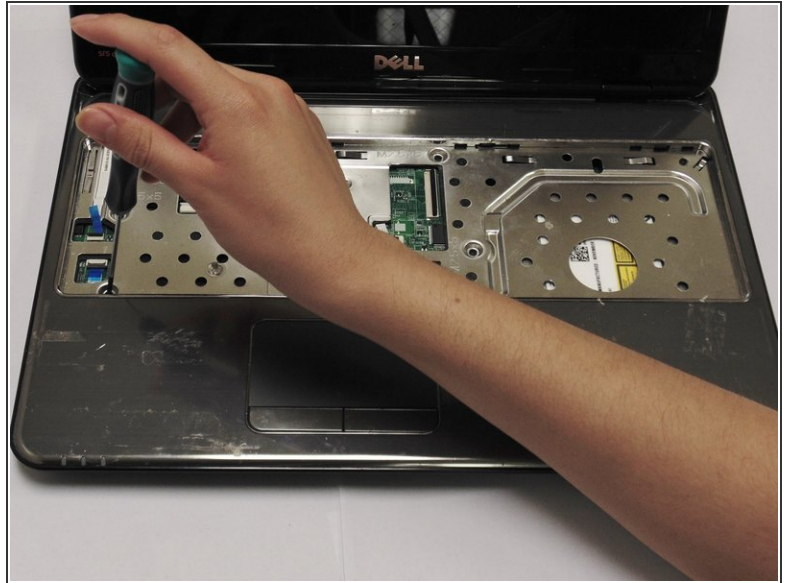
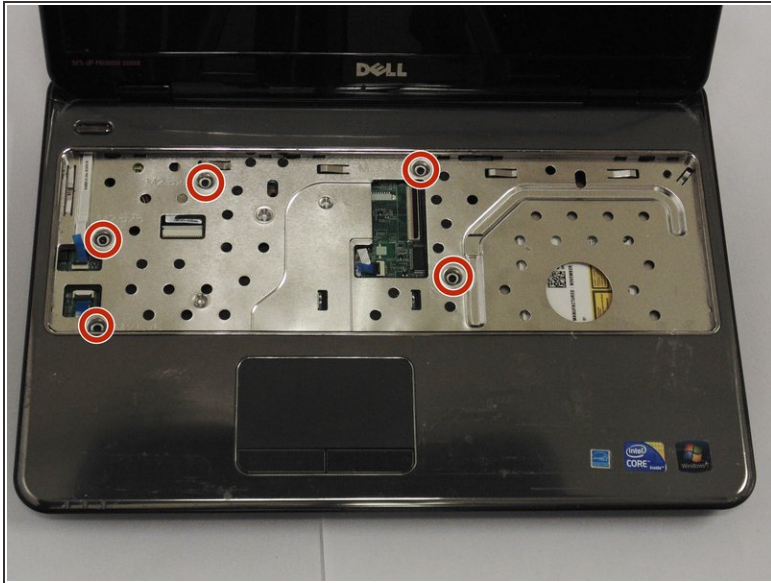
- Remove the keyboard cable

## Step 14 — Hard Drive



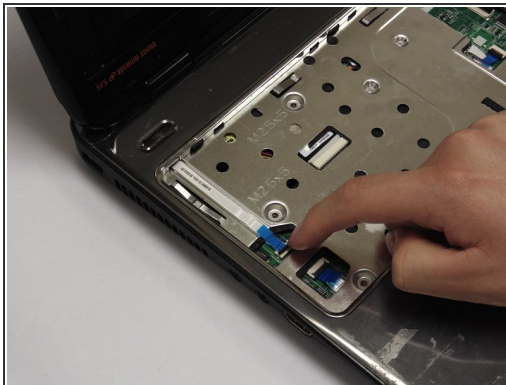
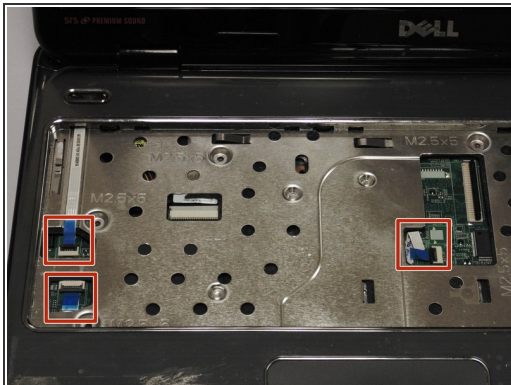
- Turn laptop over and remove the bottom four screw covers outlined in red.
- Then remove the three base screws.

## Step 15



- Turn laptop over and open it. Locate and remove the five palm rest screws.

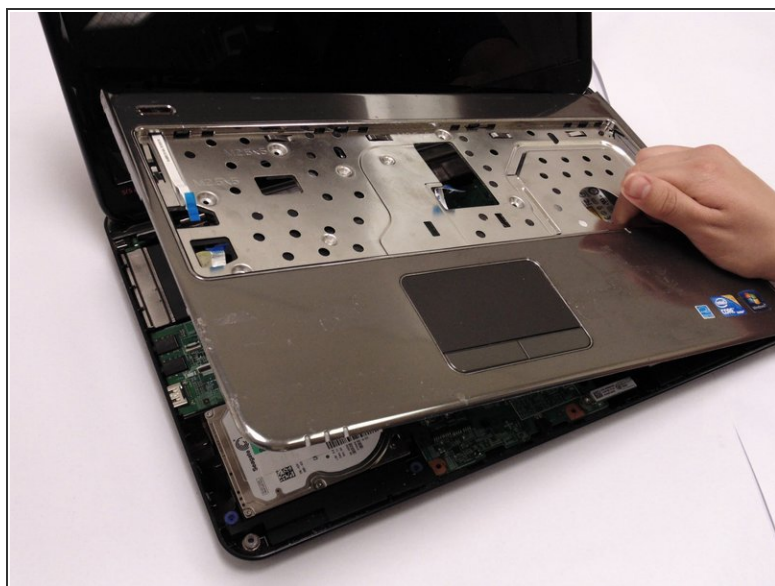
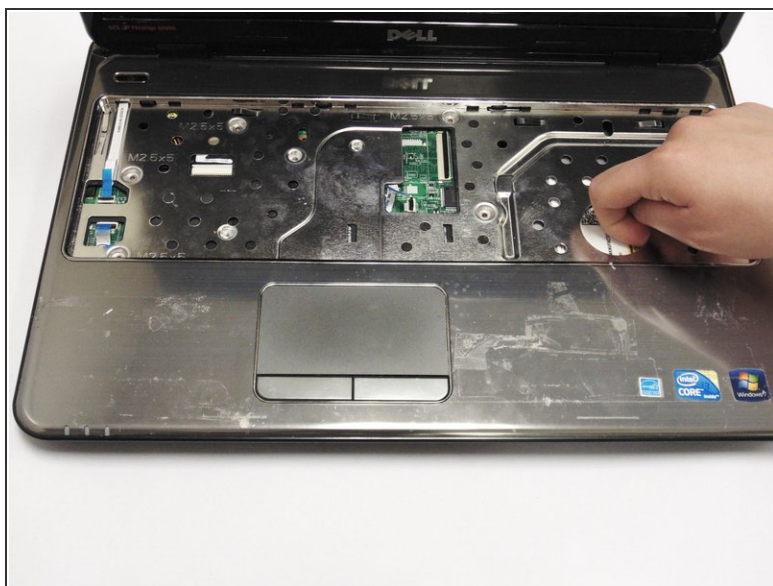
## Step 16



- Locate the palm rest cables. Lift the black levers and unplug the blue cables.



## Step 17



- Lift the palm rest until it snaps off.

## Step 18



- Close cover and turn laptop over. Locate and remove the four hard drive screws.



## Step 19



- Turn laptop over and open it.

## Step 20



- Lift and remove the hard drive.

## Step 21



- Remove the hard drive connector.

To reassemble your device, follow these instructions in reverse order.