



Canon PowerShot A2300 Front Cover Replacement

This guide will show you how to remove and/or replace the front cover.

Written By: Ashley Fincher



INTRODUCTION

This guide will walk the reader through the process of removing the front cover in order to replace it. There are no prerequisite guides that need to be completed in order to remove the front cover.



TOOLS:

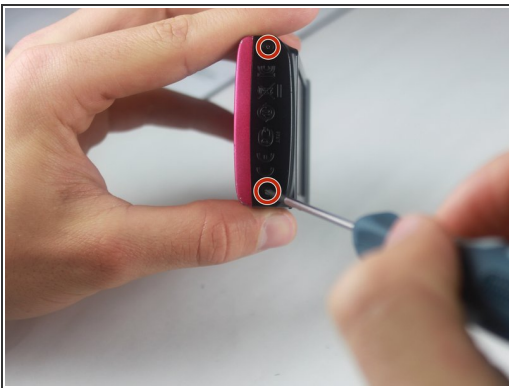
- [Spudger](#) (1)
 - [Phillips #00 Screwdriver](#) (1)
-

Step 1 — Front Cover




- Open the A/V Out Digital port cover on the function button side to reveal a screw.

Step 2



- Remove all 6 screws(2.70 mm), 2 on each side and 2 on the bottom.

 Screws are small and very easily lost.

Step 3



- Open the card/battery latch by sliding the cover away from the camera in the direction indicated by the arrow.
- ⓘ Doing this gives a spot to grip on the bottom of the front cover. This will make it easier to handle when removing.

Step 4



- Gently lift the bottom of the front cover to roughly a 30 degree angle.

Step 5



- Pull the top of the front cover away from the camera by gripping the top of the front cover by the corners where the cover is still attached to the body.

To reassemble your device, follow these instructions in reverse order.