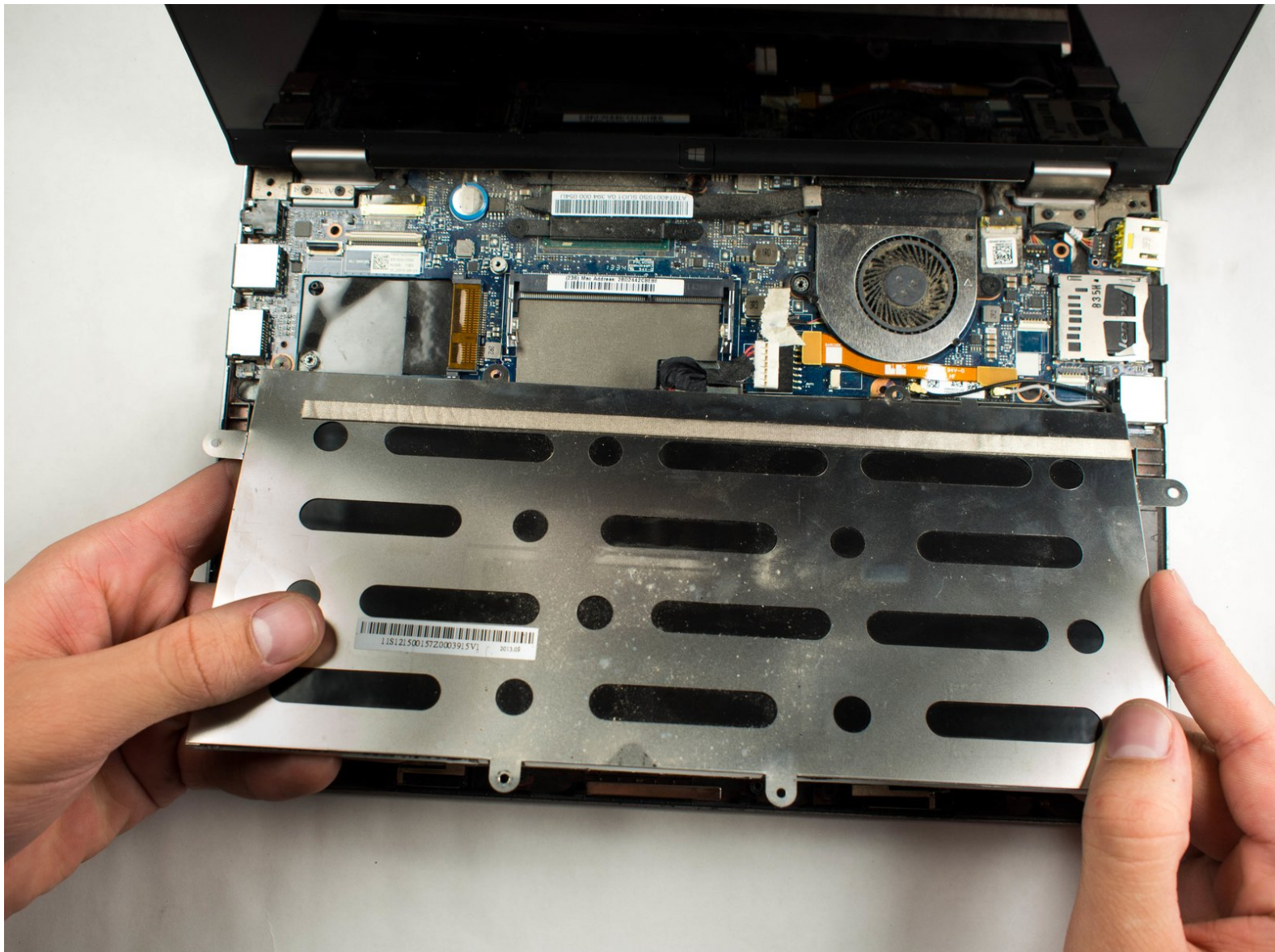




# Lenovo IdeaPad Yoga 11S Battery Replacement

In this guide, you will learn how to get to the battery of your IdeaPad Yoga 11S.

Written By: Landon Epps



## INTRODUCTION

The battery is located directly underneath the top assembly. The RAM module is located above the battery cable, so the RAM module needs to be removed first.



### TOOLS:

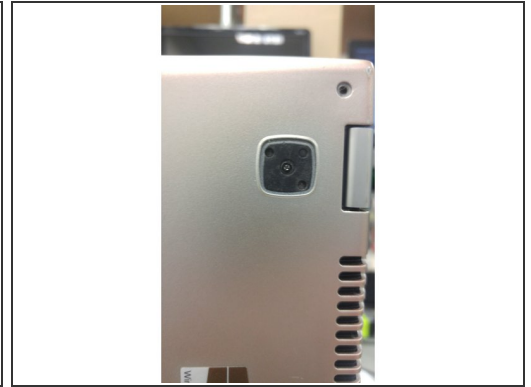
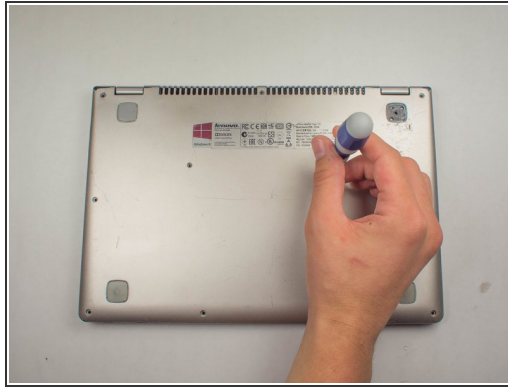
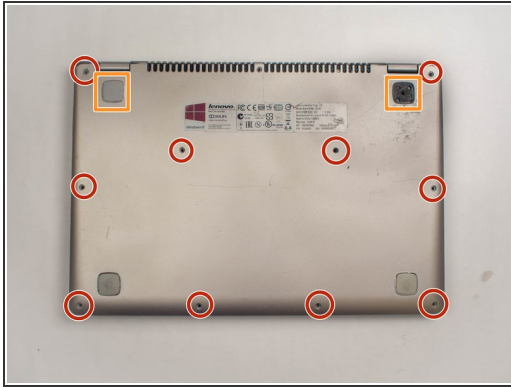
- [Phillips #0 Screwdriver](#) (1)
- [iFixit Opening Tools](#) (1)




### PARTS:

- [Lenovo IdeaPad Yoga 11S Replacement Battery](#) (1)

## Step 1 — Top Assembly



-  Remember to power off the device before removing any parts.
- Position the laptop so that the bottom enclosure is facing upward.
- Use a Phillips #0 Screwdriver to remove the ten 1.9mm screws holding the bottom enclosure in place.
- Use an opening tool to carefully pry up the rubber pads.
- Use a Phillips screwdriver to remove the two screws under the rubber pads, which secure the keyboard.

## Step 2 — Remove Keyboard



- Flip the laptop over and swing open the display.
- Lift the edge of the keyboard closest to the trackpad up.
- Carefully disconnect keyboard ribbon cable from the laptop.
- Remove the keyboard.

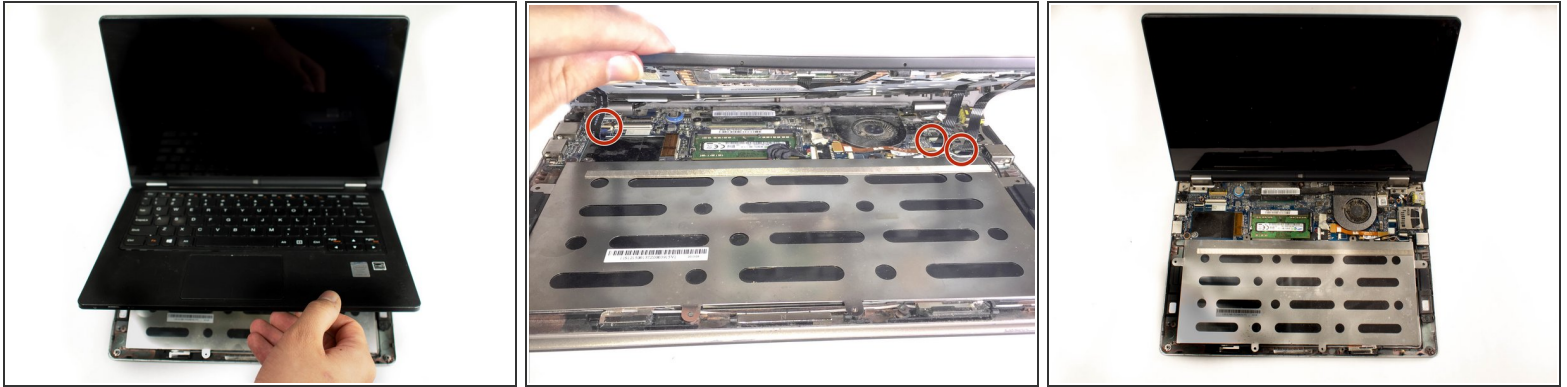
## Step 3



- Remove the two screws securing the midframe.

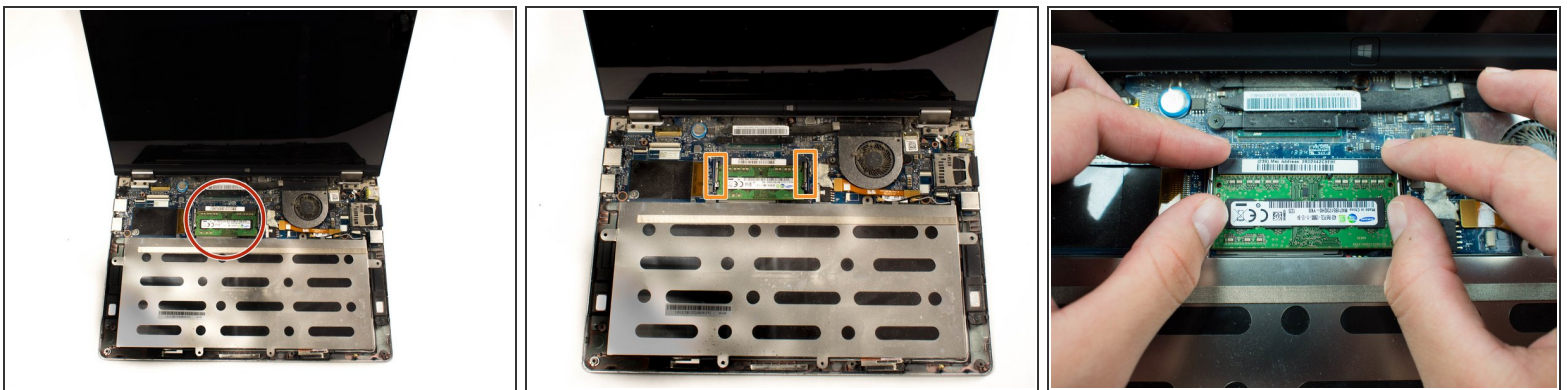


## Step 4



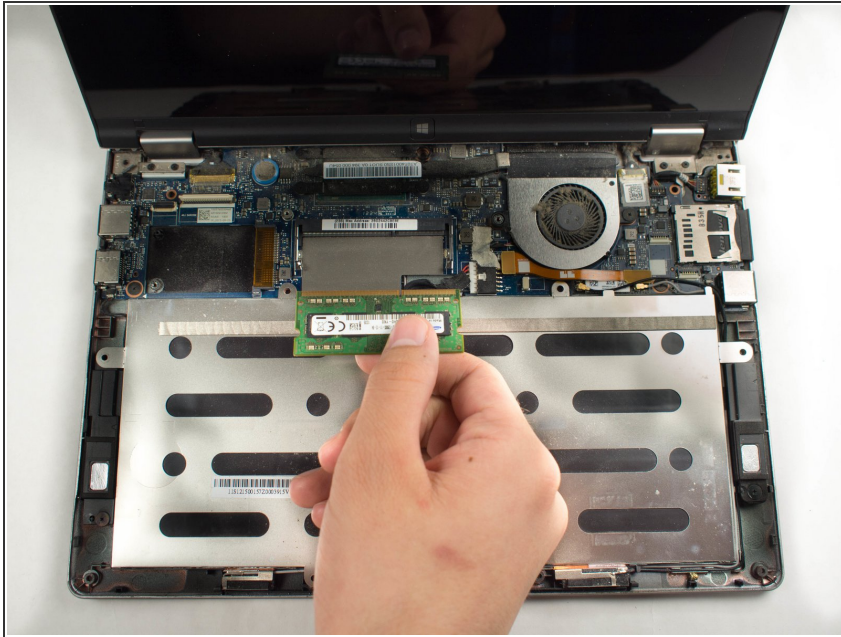
- Grab the front edge of the top assembly and lift it up carefully.
  - ⚠ There are three ribbon cables that attach the top assembly to the motherboard. Lift carefully to avoid damaging them.
- Gently slide the three ribbon cables out of their slots.
- Remove the top assembly completely by pulling it off of the device.

## Step 5 — RAM



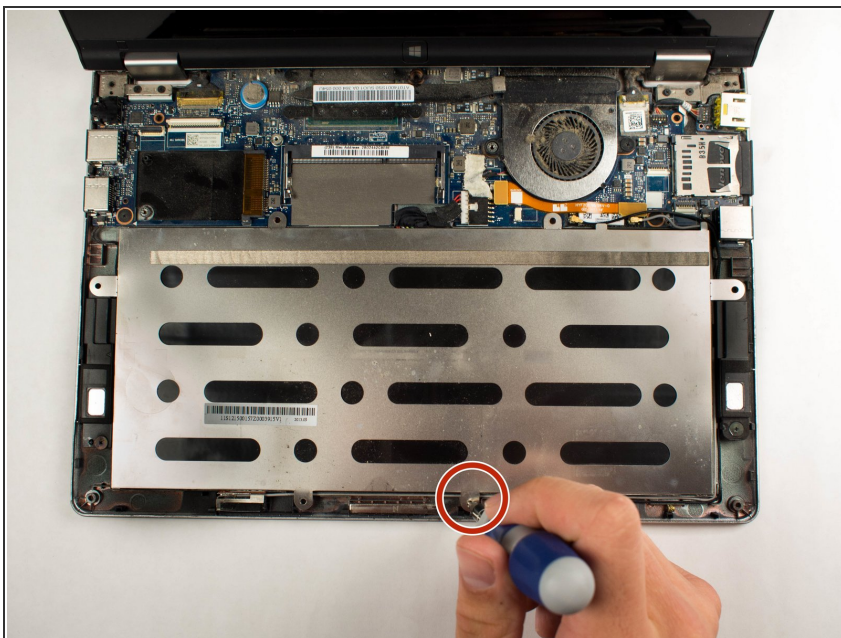
- Locate the RAM module.
- Locate the tabs on both sides of the RAM module
- Spread both tabs outward at the same time in order to release the RAM module.

## Step 6



- Grab the RAM module and carefully pull it out from its position.

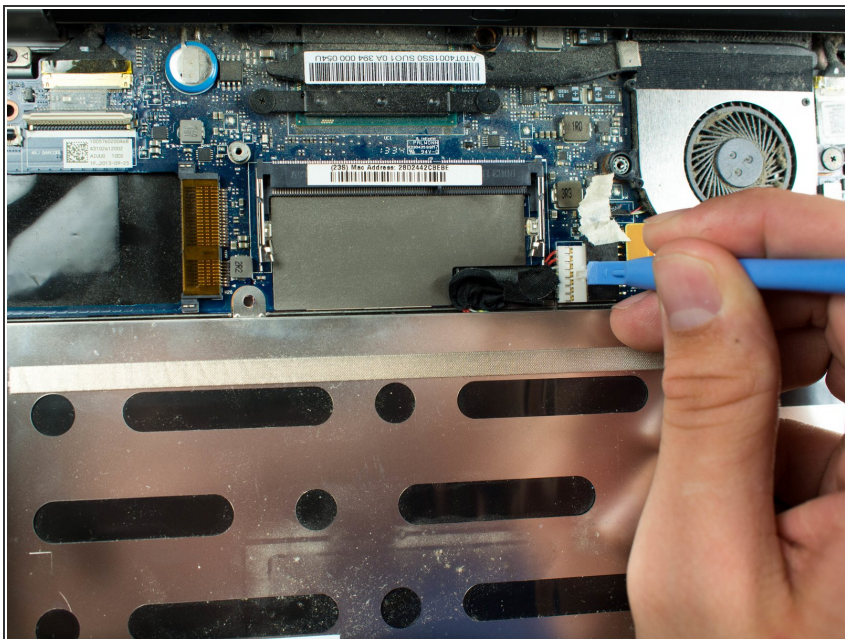
## Step 7 — Battery



- Locate the 1.9mm screw used to hold down the battery.
- Use a Phillips #0 Screwdriver to remove the screw.

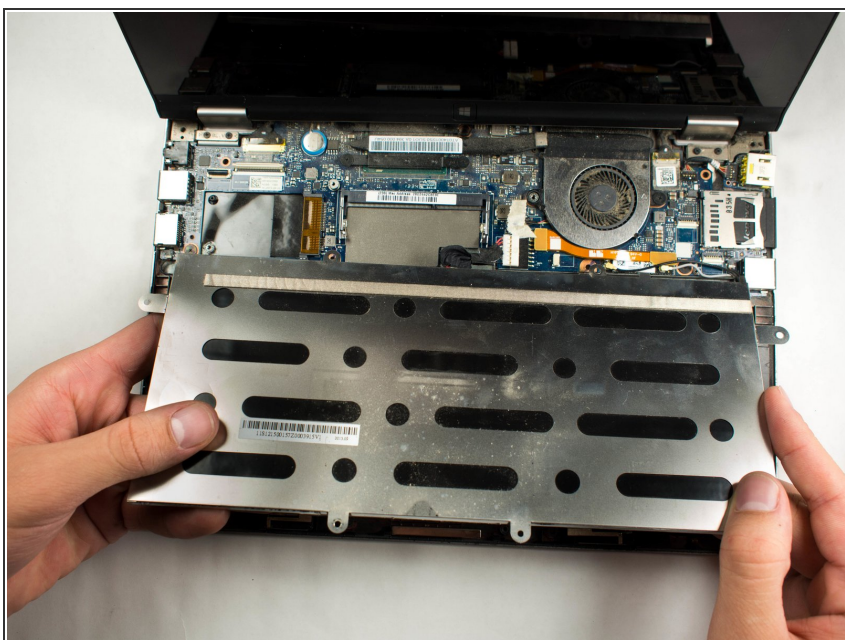


## Step 8



- Use a plastic opening tool to disconnect the battery connector from the motherboard.

## Step 9



- Now that the battery is disconnected from the device, lift the battery and gently remove it from the device.

To reassemble your device, follow these instructions in reverse order.

For optimal performance, after completing this guide, [calibrate](#) your newly installed battery.

Take your e-waste to an [R2 or e-Stewards certified recycler](#).

Repair didn't go as planned? Try some [basic troubleshooting](#), or ask our [Answers community](#) for help.