



# Disassembling Samsung Galaxy S Blaze Whole Device

This guide will allow users of the Samsung...

Written By: Jake Best



## INTRODUCTION

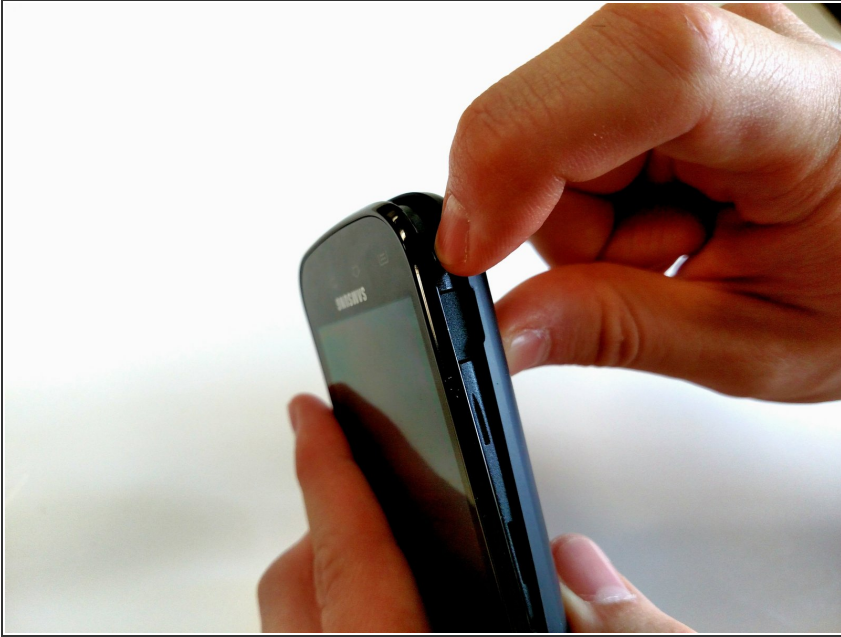
This guide will allow users of the Samsung Galaxy S Blaze to understand how to take the phone apart. The guide will make future repairs easier to accomplish. The disassembly of the phone is an easy process with no surprises. You will need to be careful with the screws that are inside the device, the screws will strip easily. To properly disassemble the phone you will need a Phillips Head screw driver size 00 and a flat wedge opening device.



### TOOLS:

- [Phillips #00 Screwdriver](#) (1)
  - [iFixit Opening Tool](#) (1)
-

## Step 1 — Disassembling Samsung Galaxy S Blaze Whole Device



- Remove the back plate.

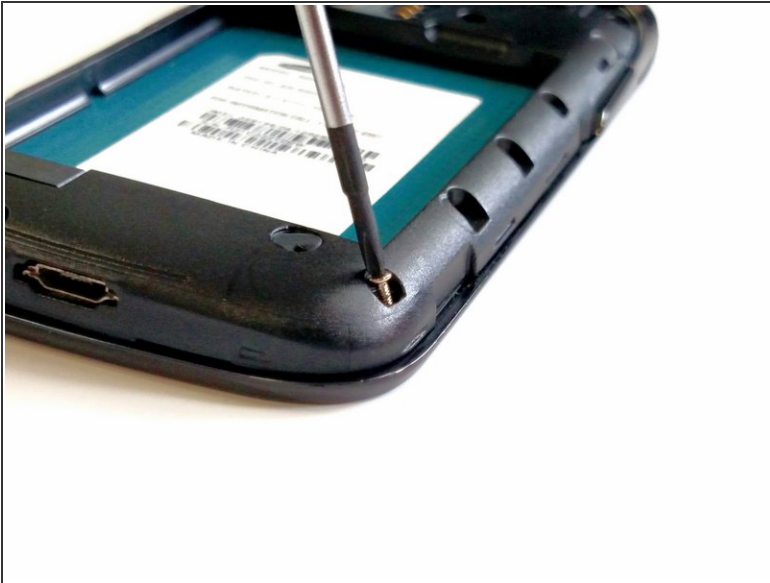
## Step 2



- Remove the battery from the device.

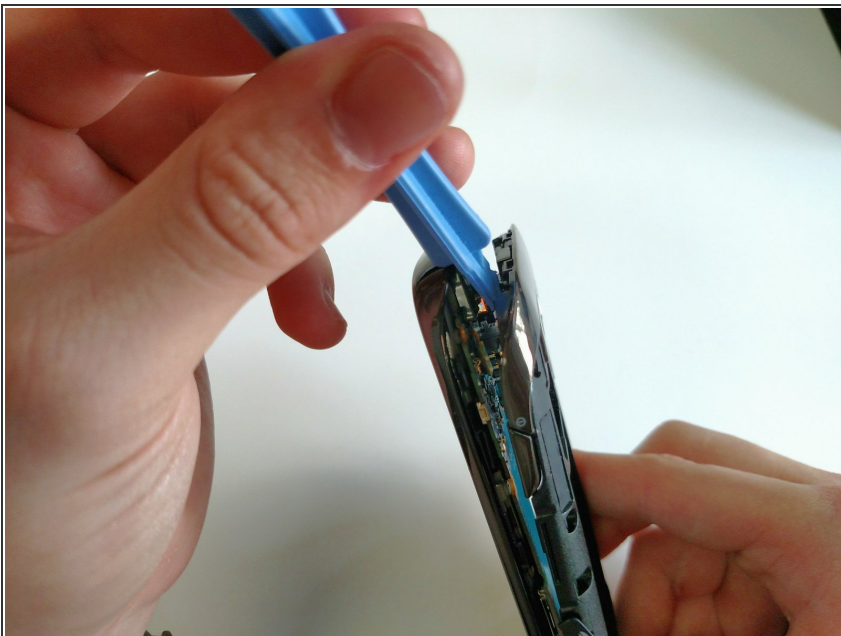


### Step 3



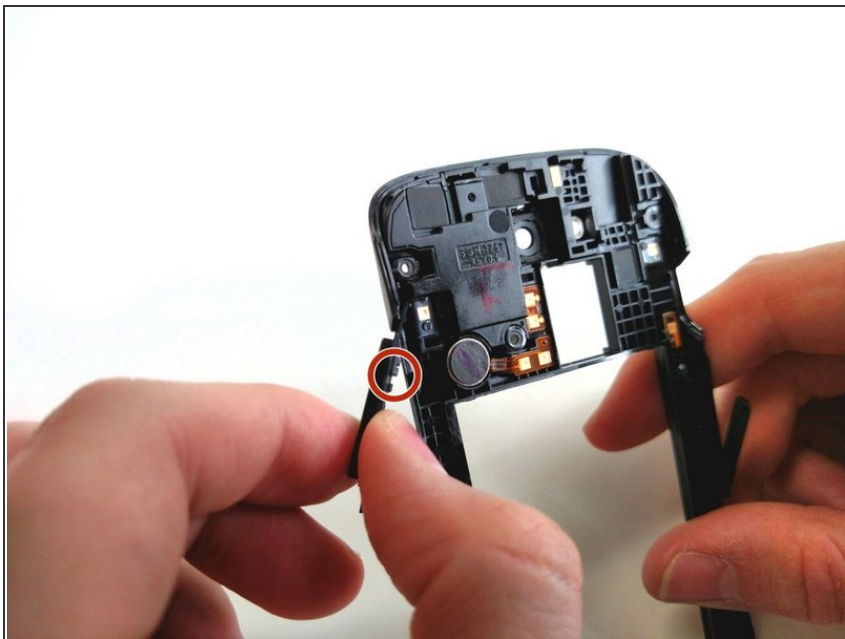
- Use a Phillips head screwdriver size 00.
- Remove the 4mm screws from the frame.
- ⓘ The eight screws are all the same size.

### Step 4



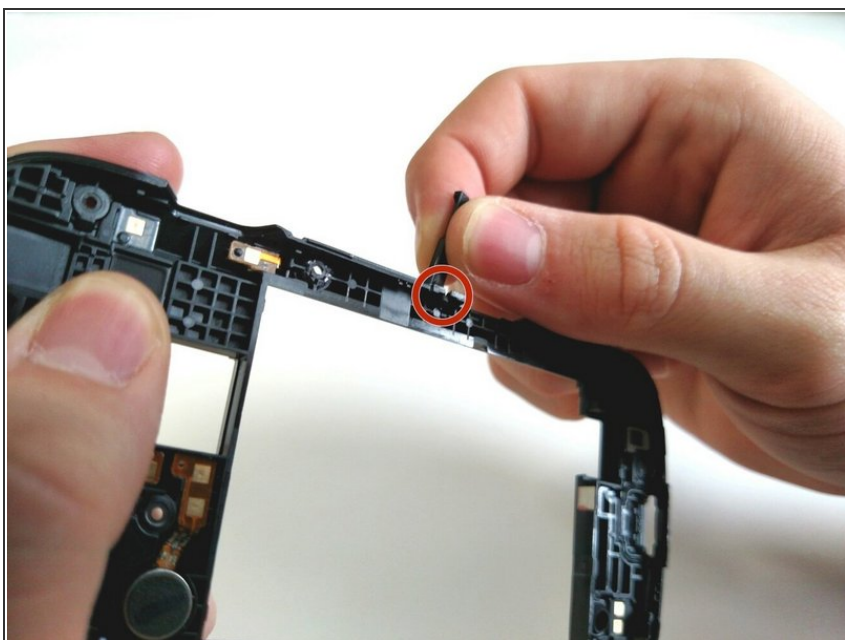
- Remove the frame from the phone by using the blue plastic opening tool.
- Work around the phone with the tool until the frame is off.
- ⓘ You may need to use a bit of force to pry off the frame.

## Step 5



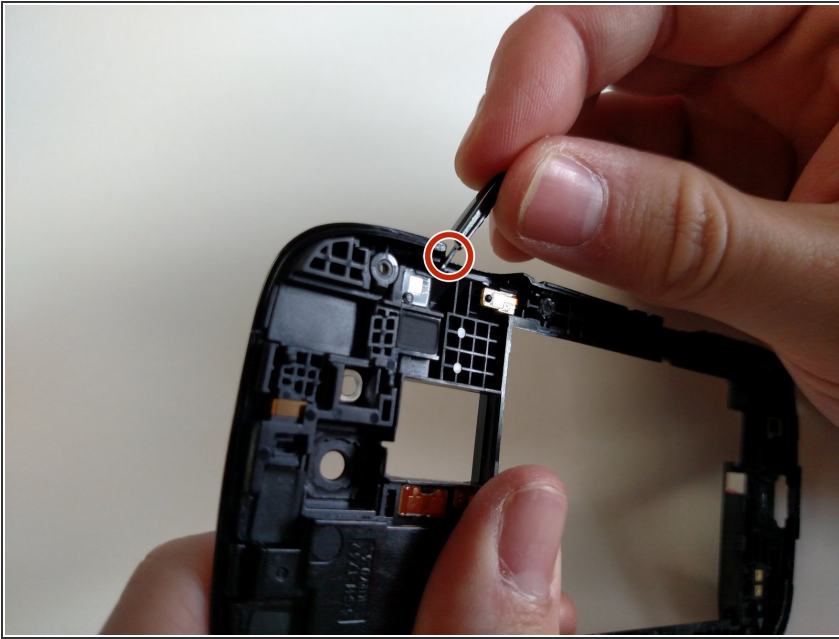
- ❗ The volume rocker is attached to the frame by two plastic prongs.
- Unhook the prongs from the frame and remove the volume rocker.

## Step 6



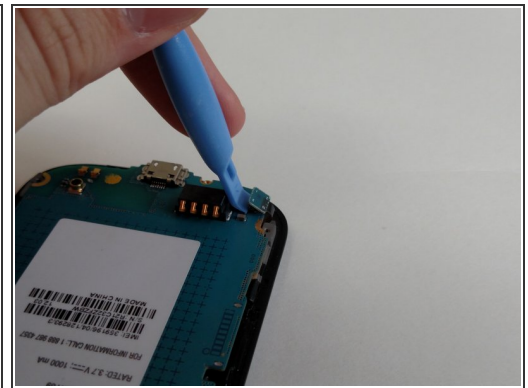
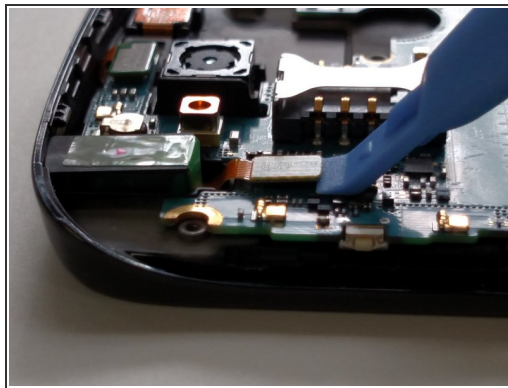
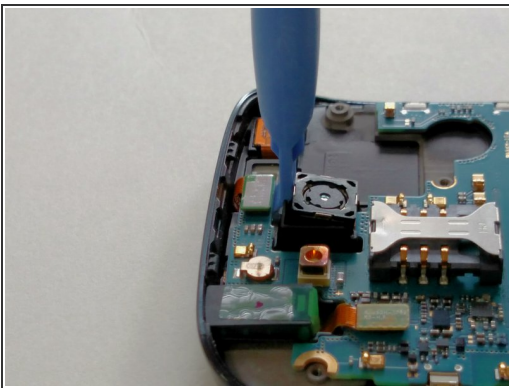
- The SD card slot is held in place by a small tab.
- Unhook the tab of the SD card slot from the frame of the phone.

## Step 7



- The power button is attached to the phone with two prongs.
- Unhook the prongs of the power button from the frame of the phone.

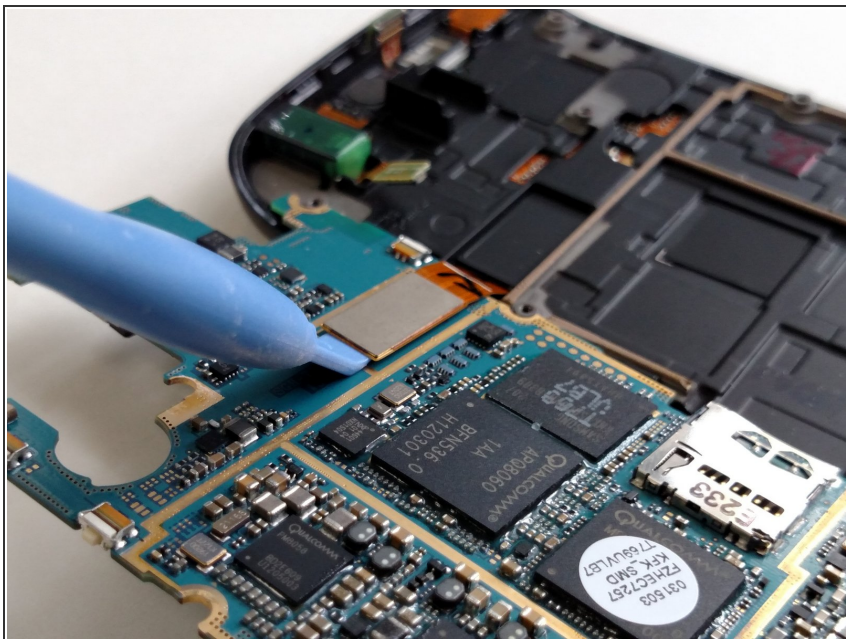
## Step 8



- ❗ 4 ribbon cable connectors hold the motherboard to the phone.
- ❗ The first 3 are all on one side.
- Use the blue plastic opening tool to unlatch the wire ribbons from the motherboard.



## Step 9



- ❗ Flip the motherboard over to access the last ribbon cable connector.
- Unlatch the final ribbon cable connector from the phone.
- Remove the motherboard from the phone.

## Step 10



- All of the parts are seen here.

To reassemble your device, follow these instructions in reverse order.

If there is something wrong with your device, try this: [Samsung Galaxy S Blaze 4G Troubleshooting](#)