



Kodak EasyShare M381 Lens/Optics Replacement

Technology in the lens can often become...

Written By: Christina Hamby



INTRODUCTION

Technology in the lens can often become dysfunctional. This guide will show you how to remove it, so you can clean or replace it. Lens Part Number: k9711061632 2ba

TOOLS:

[Magnetic Project Mat](#) (1)

[Tweezers](#) (1)

[Phillips #00 Screwdriver](#) (1)

[iFixit Opening Tool](#) (1)

Step 1 — Battery



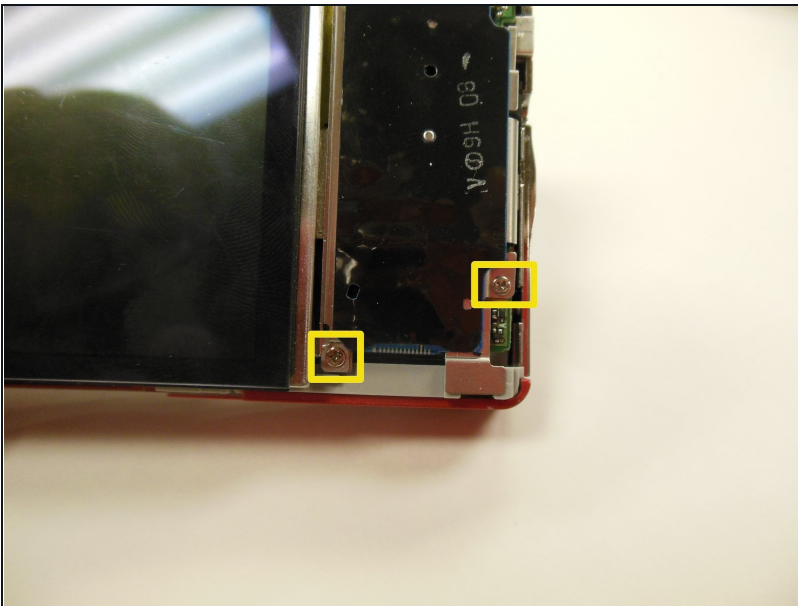
- First, press in and slide forward the battery latch as indicated by the arrow.

Step 2



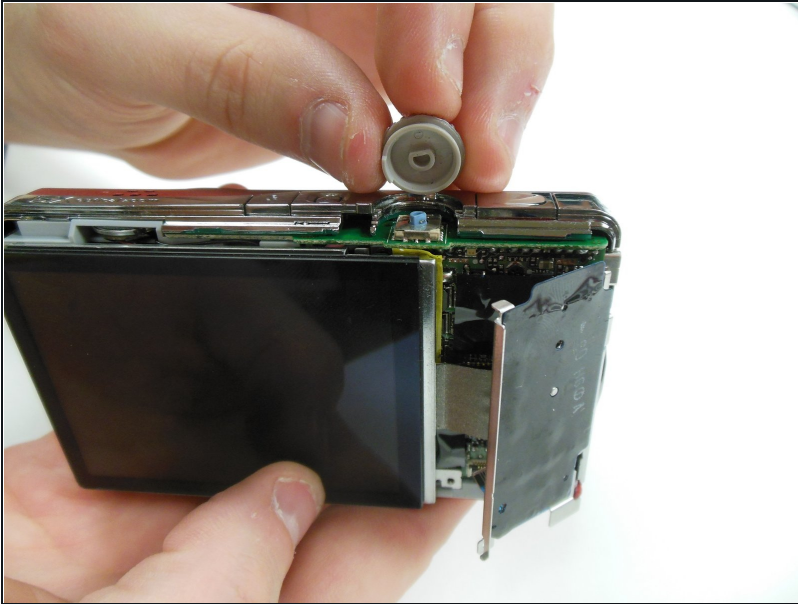
- Press down on battery until you hear a click and release it. Battery should easily slide out.

Step 3 — Screen



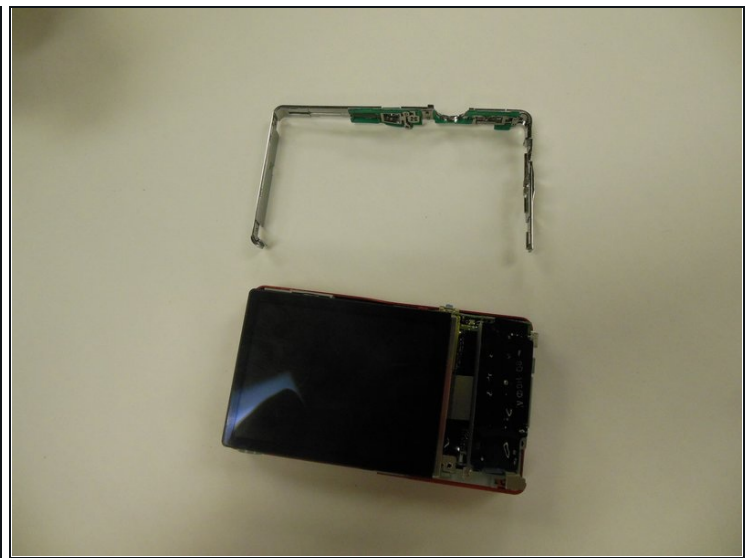
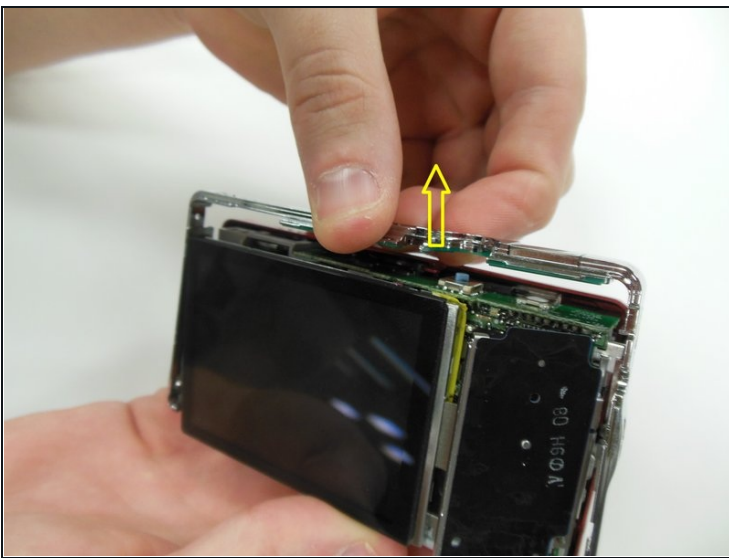
- Remove the two 3.85 mm screws on the bottom right of the camera, as indicated.

Step 4



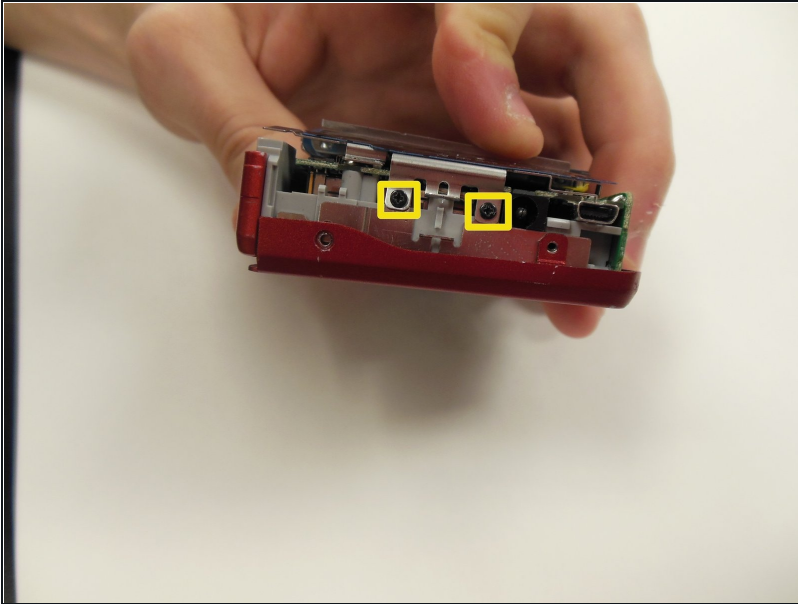
- Remove dial button located on top of camera, by gently pulling up.

Step 5



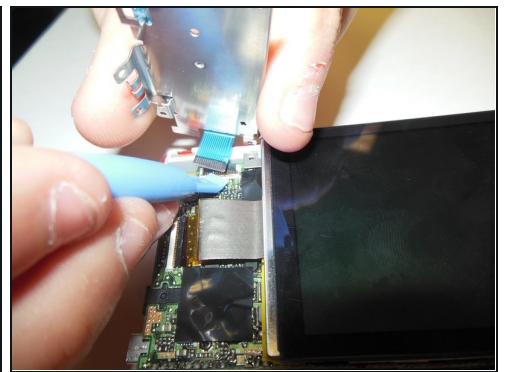
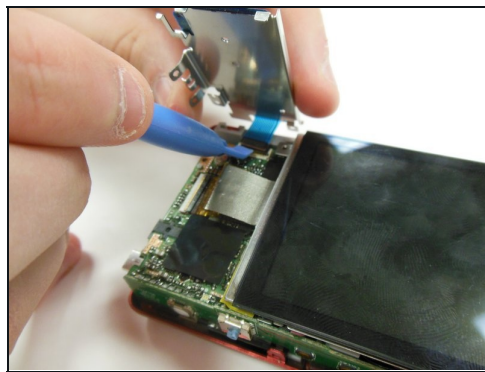
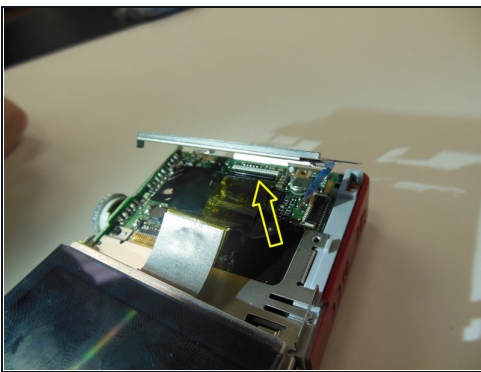
- Starting at one side, carefully work the chrome frame off of the camera itself.
 - ⓘ Be careful not to disturb the shutter or flash buttons on top of the camera.

Step 6



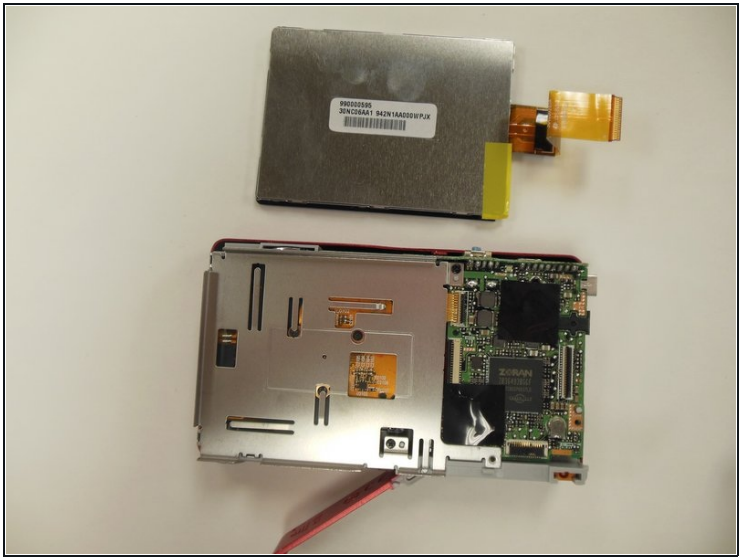
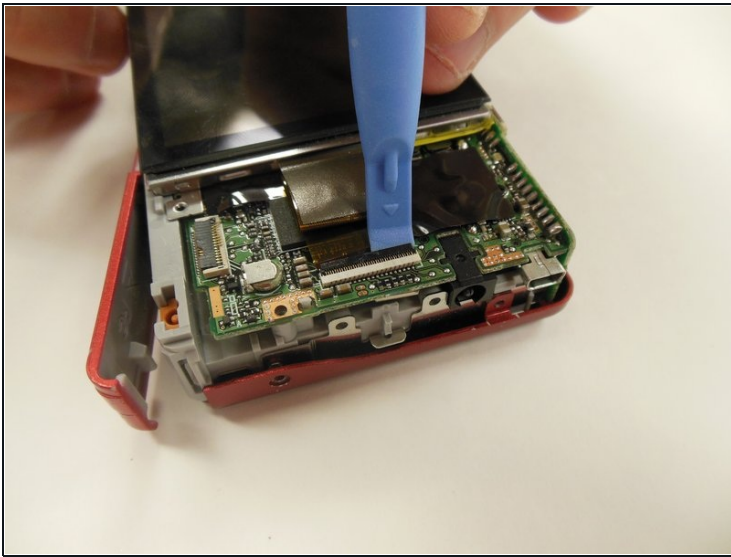
- On the right side of the camera, locate and remove the two 3.25 mm screws as highlighted.

Step 7



- Carefully lift the motherboard panel up, pulling towards the left. Make sure you do not rip the blue ribbon.
- Using a plastic opening tool, gently lift up on the ribbon fastener until it is in an upright position.
- Slide panel away from camera.

Step 8



- Using a plastic opening tool, gently lift ribbon clamp as indicated to remove the screen ribbon from the motherboard.
- Screen should now be detached. Gently lift it away from the base of the camera.

Step 9 — Back Panel Frame



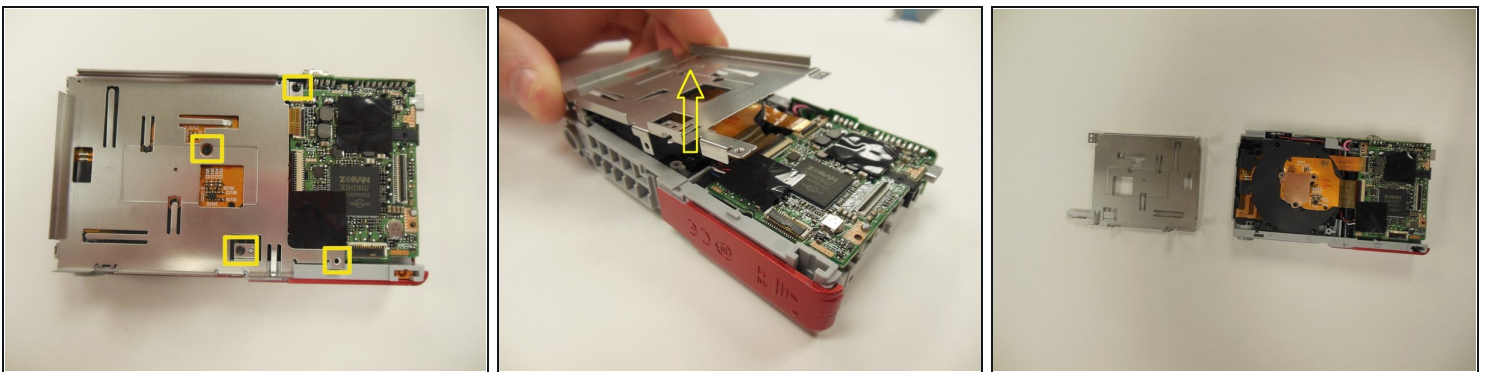
- Remove the 3.9 mm frame screws using a Phillips #00 screwdriver.
 - ⓘ Using a magnetized surface to keep from losing screws may be very helpful.

Step 10



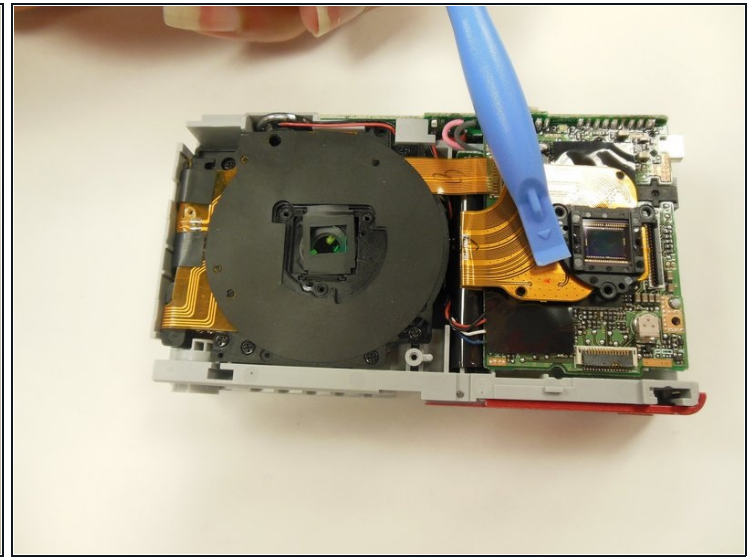
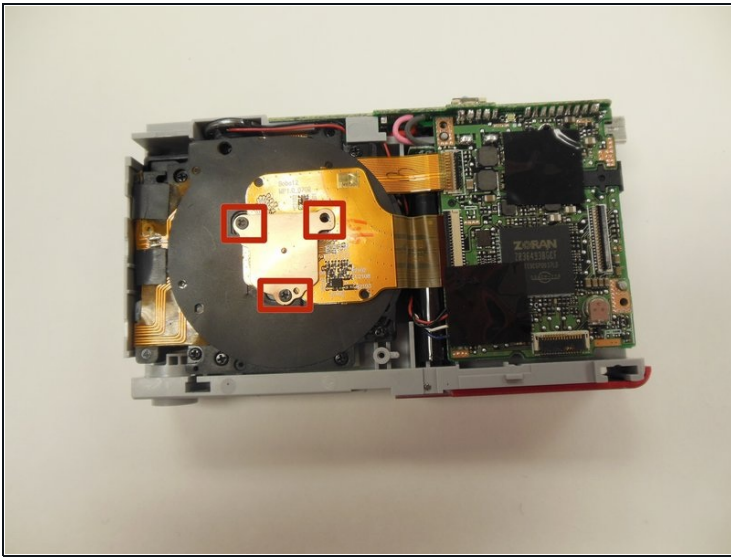
- Using both hands, carefully pull the frame apart from the camera.

Step 11 — Lens/Optics



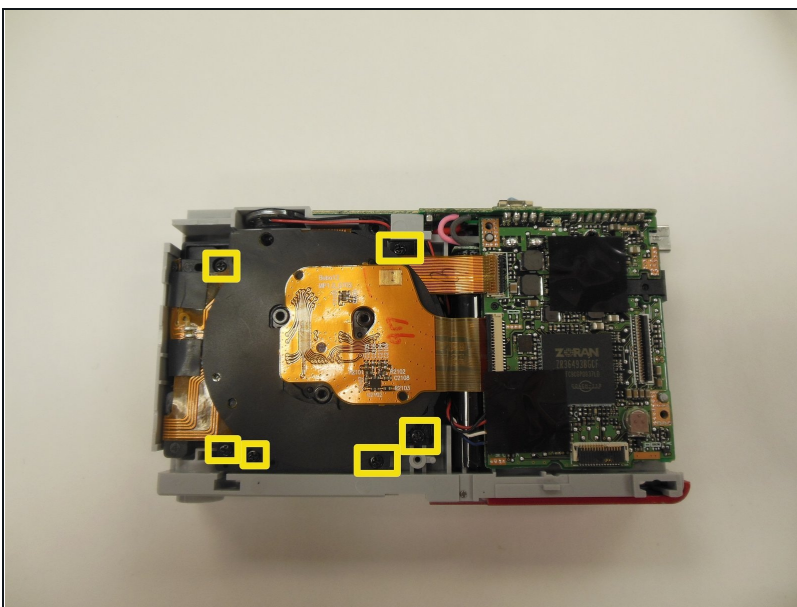
- Locate and remove the four 3.25 mm screws securing the back panel to the frame of the camera using the Phillips #00 screwdriver.
- Lift up and remove panel, detaching it from the camera frame.

Step 12



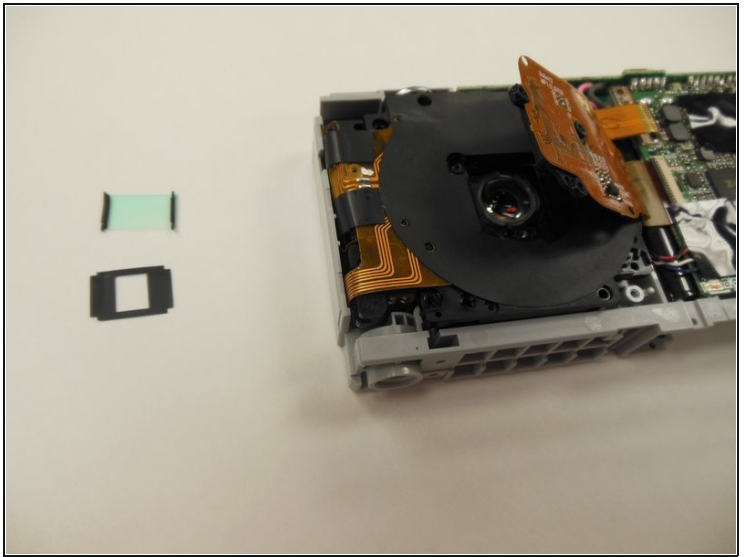
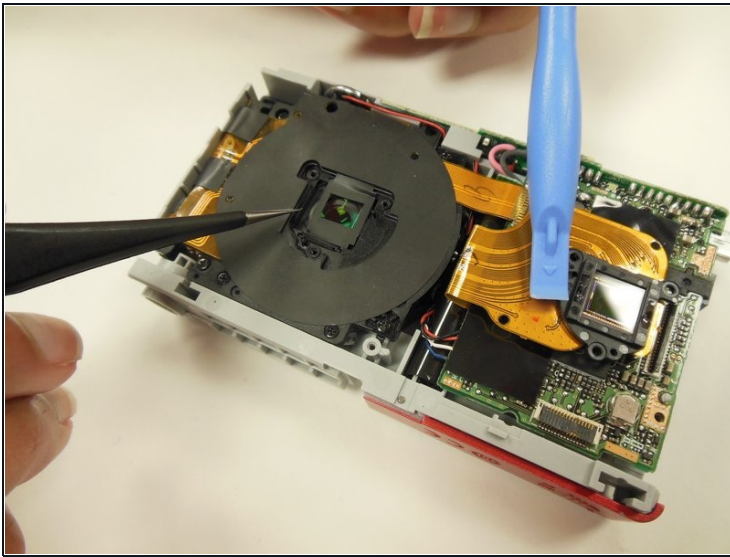
- Remove the three 3.25 mm screws securing the hexagon-shaped, copper panel to the optical device.
- Gently peel back the main optic ribbon, ensuring it is securely out of the way.
 - ⓘ This ribbon is very fragile, and, if torn, the camera will not function properly. Handle with care.

Step 13



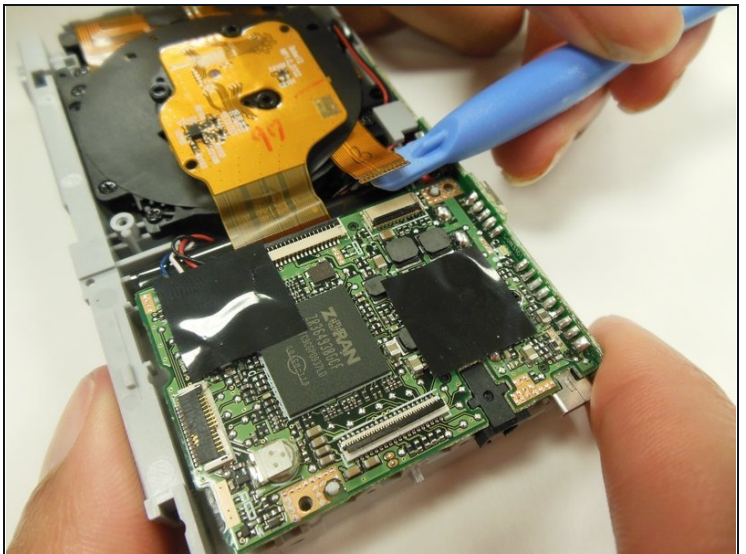
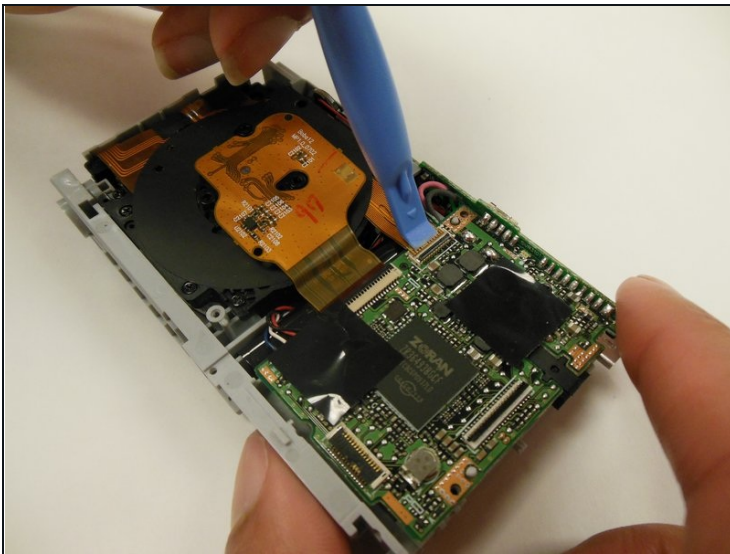
- Remove the six 3.25 mm screws securing the optic lens to the camera frame.

Step 14



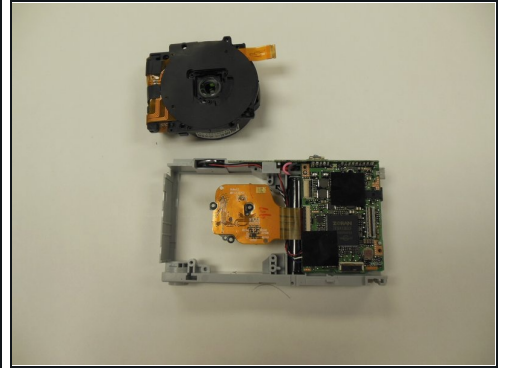
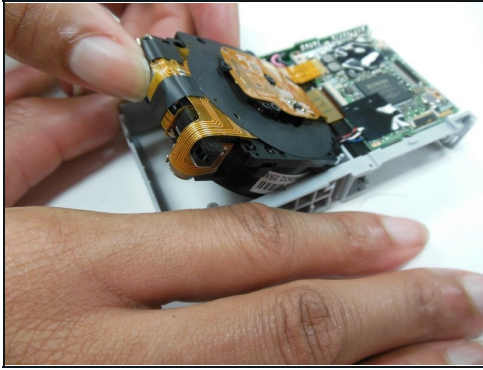
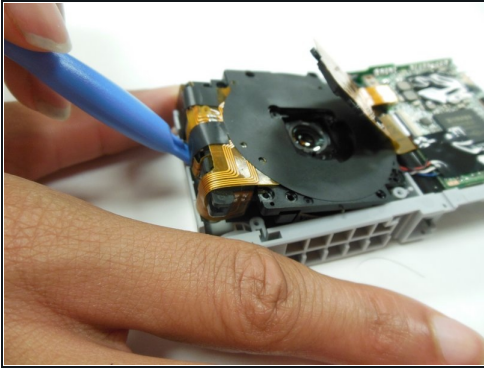
- Carefully remove the square lens film, ensuring you do not bend it. This film will be in two pieces: a black cover, and a glass square piece. It is very fragile, so handle with care.
ⓘ This film is very fragile. Handle with care.

Step 15



- There is a small ribbon attaching the optical lens piece to the motherboard. Using a plastic opening tool, gently lift up on this ribbon's clamp, detaching it from the motherboard.

Step 16



- The optic assembly should now be free. Use a pry tool to lift it far enough up that you can grab and remove it.

⚠ Be sure the detached ribbons are held out of the way to avoid any possible damage to them.

To reassemble your device, follow these instructions in reverse order.