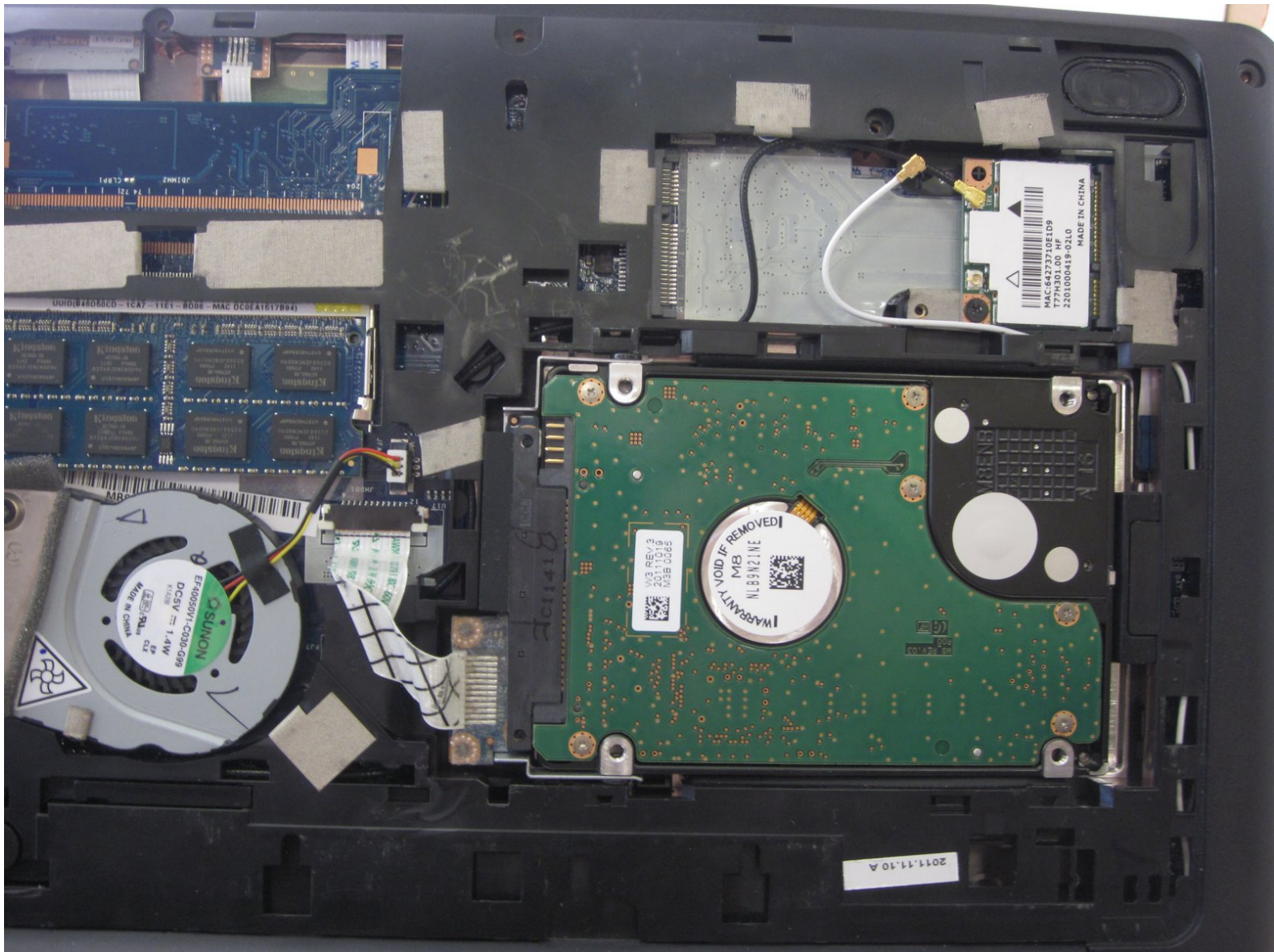




Acer Aspire One P1VE6 Hard Drive Replacement

This guide will show you how to replace the hard drive.

Written By: Wade Vierheller



INTRODUCTION

If your hard drive is no longer working, this guide will help you replace it.



TOOLS:

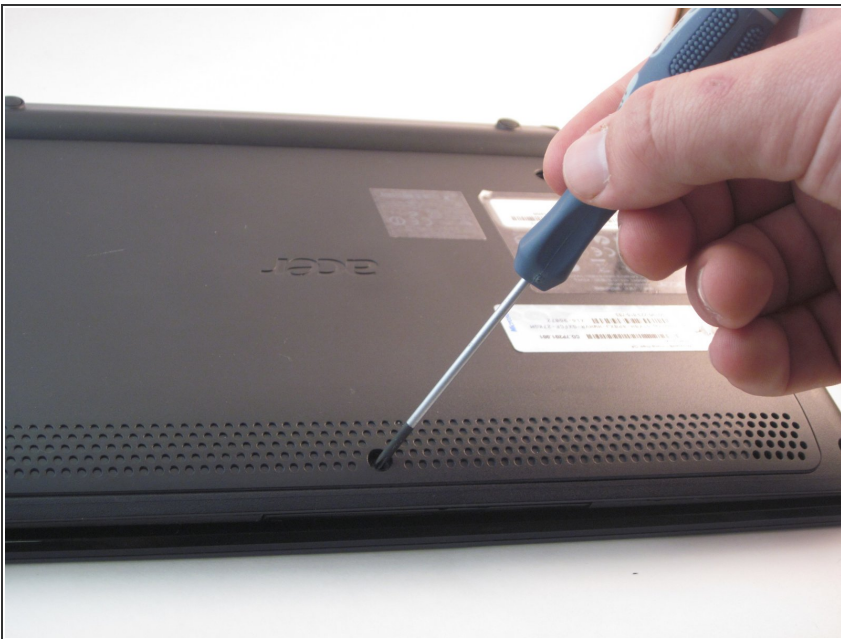
- [Phillips #2 Screwdriver](#) (1)
-

Step 1 — Back Panel



- Close the netbook and turn it over so the back panel faces you.

Step 2



- Locate the 4 mm Phillips #1 screw at the bottom of the back panel. Using the Phillips head screwdriver, remove the screw. Place the screw somewhere it will not be lost. Then remove the back panel by gently sliding it towards the front.

Step 3 — Hard Drive



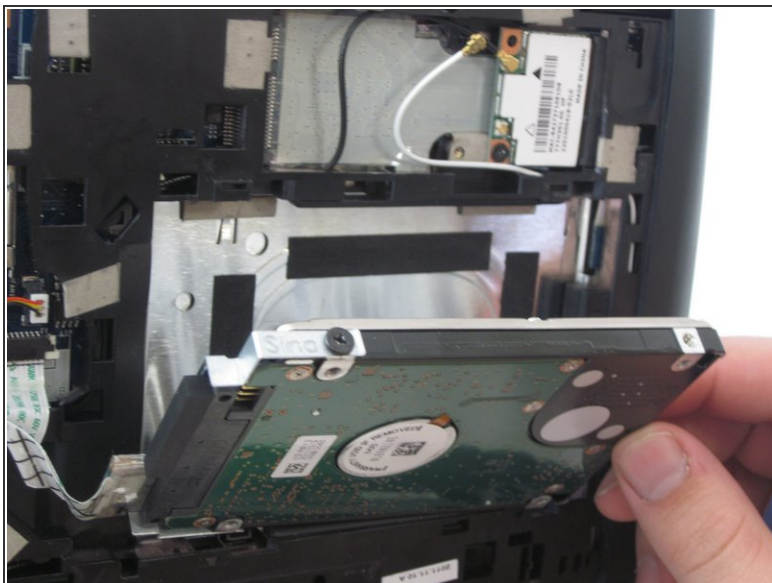
- After removing the back panel, locate the hard drive.

Step 4



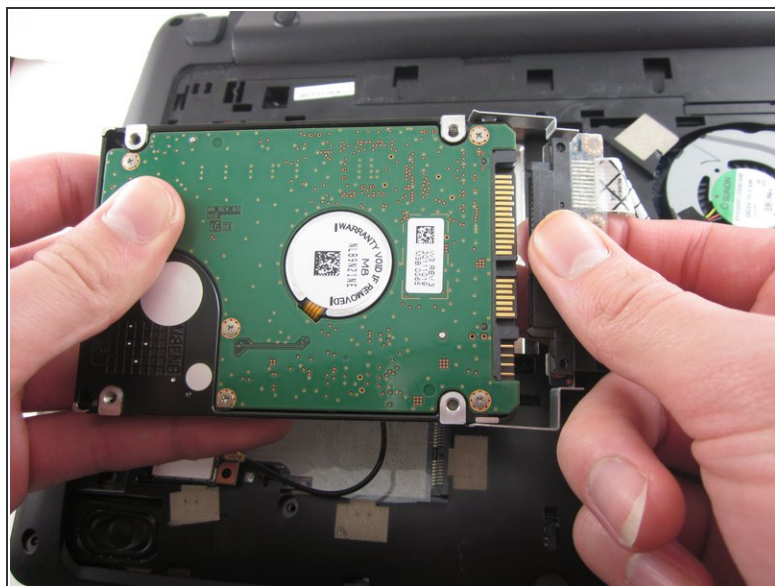
- Carefully lift up the hard drive.

Step 5



- Locate the two 4 mm Philips #1 screws holding the hard drive into its bracket.
- Remove the two screws and place them somewhere they will not be lost.

Step 6



- Unplug the hard drive from the bracket.

To reassemble your device, follow these instructions in reverse order.