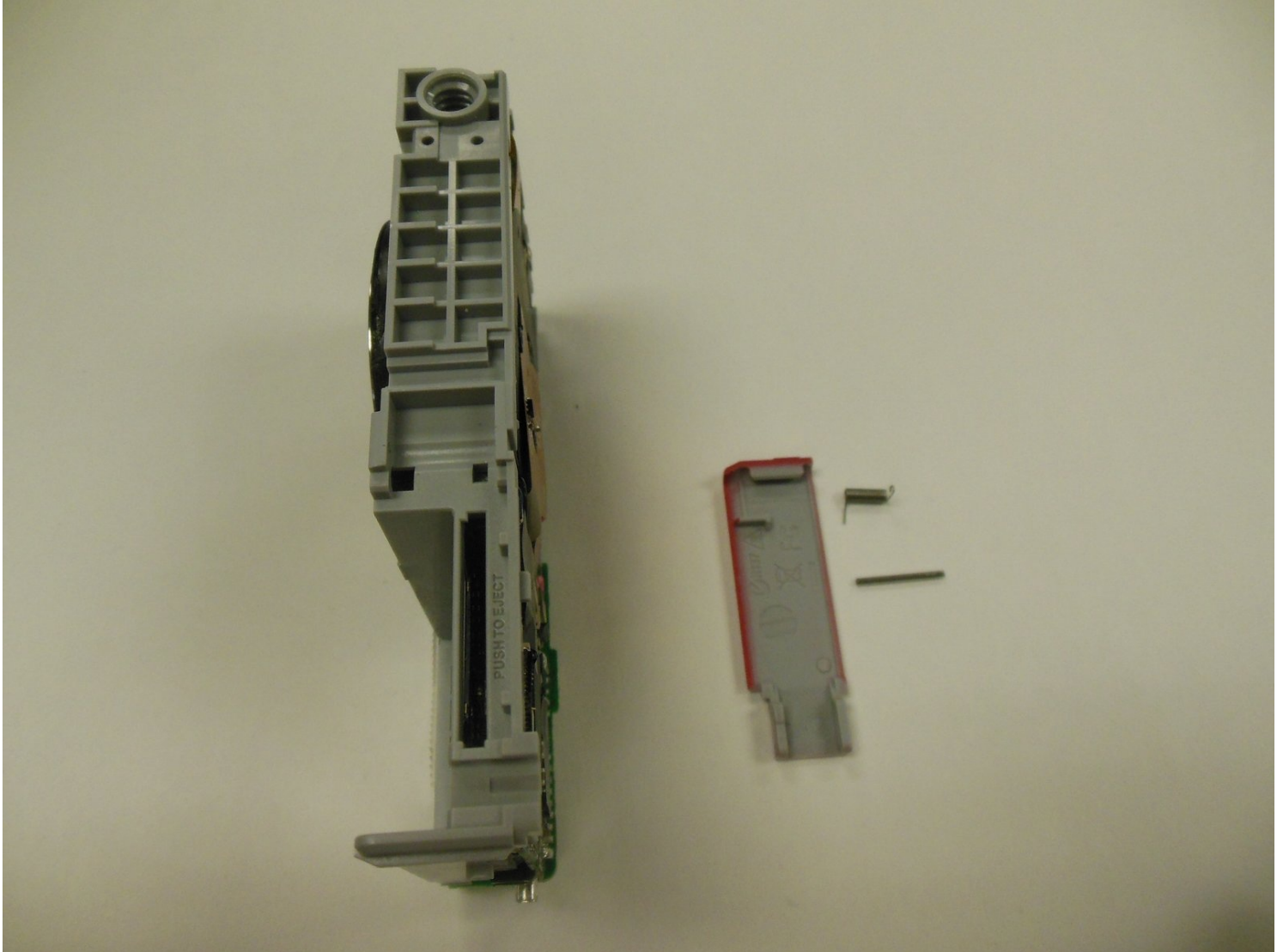




# Kodak EasyShare M381 Battery Latch Replacement

The battery latch can often crack, making the...

Written By: Christina Hamby



# INTRODUCTION

The battery latch can often crack, making the battery connection very weak. This guide will outline how to remove and replace it.

---

## TOOLS:

[Magnetic Project Mat](#) (1)  
[Tweezers](#) (1)  
[Phillips #00 Screwdriver](#) (1)  
[Paper Clip](#) (1)  
[Safety Glasses](#) (1)  
[iFixit Opening Tool](#) (1)

---

## Step 1 — Battery



- First, press in and slide forward the battery latch as indicated by the arrow.

## Step 2



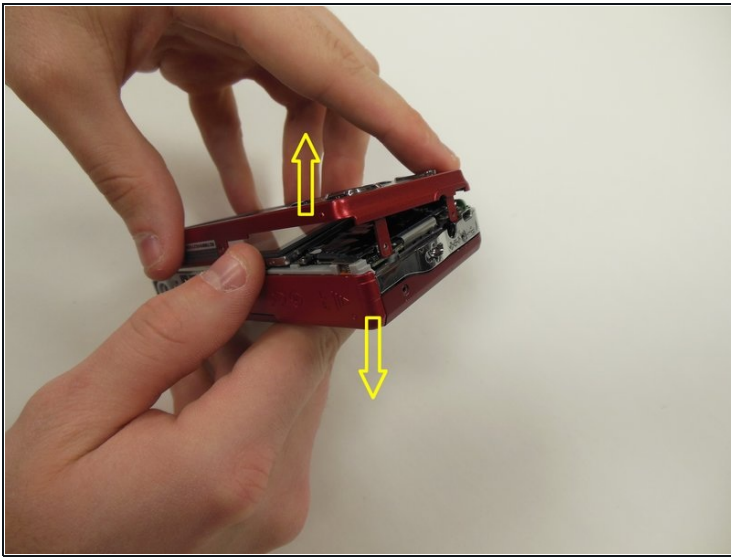
- Press down on battery until you hear a click and release it. Battery should easily slide out.

## Step 3 — Back Panel Frame



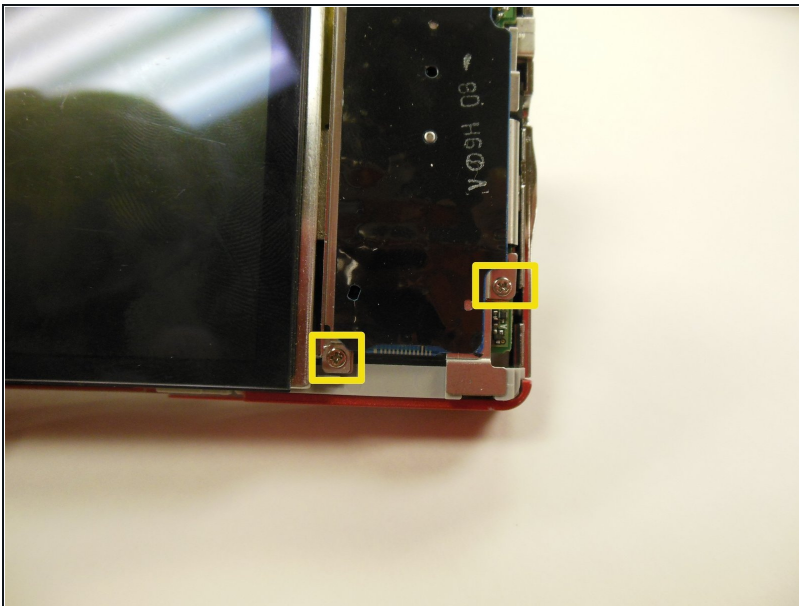
- Remove the 3.9 mm frame screws using a Phillips #00 screwdriver.
  - ① Using a magnetized surface to keep from losing screws may be very helpful.

## Step 4



- Using both hands, carefully pull the frame apart from the camera.

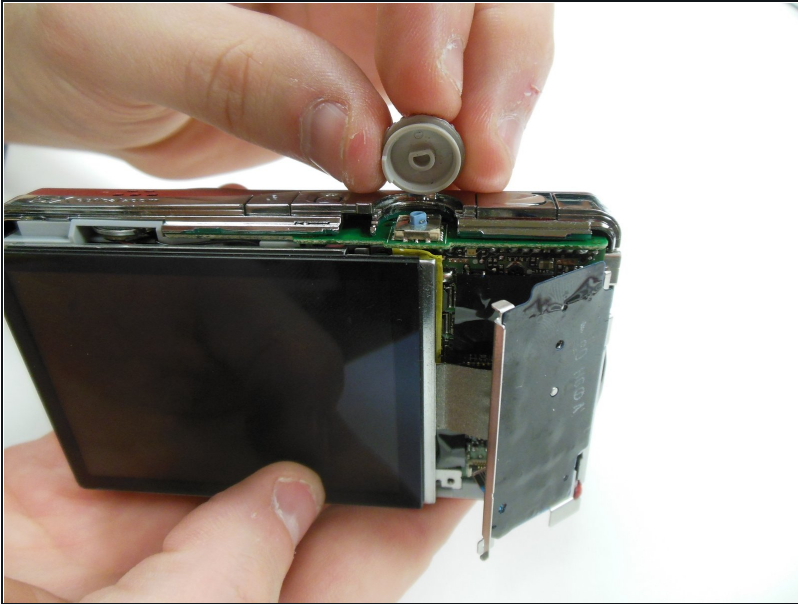
## Step 5 — Screen



- Remove the two 3.85 mm screws on the bottom right of the camera, as indicated.

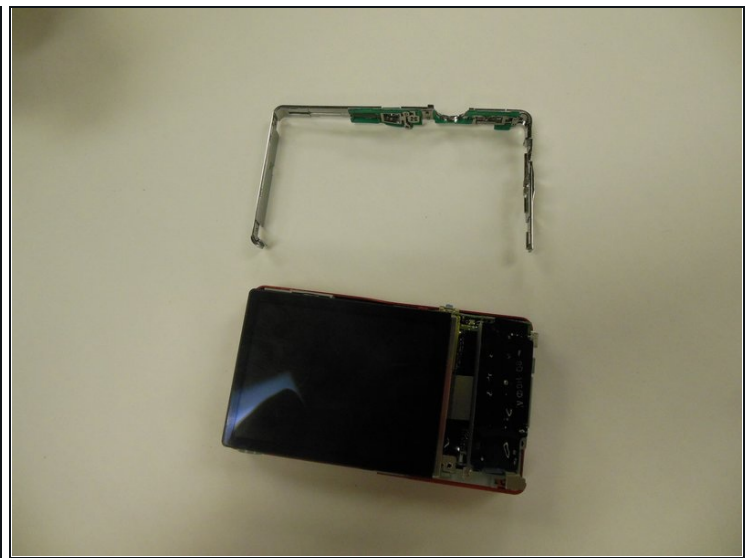
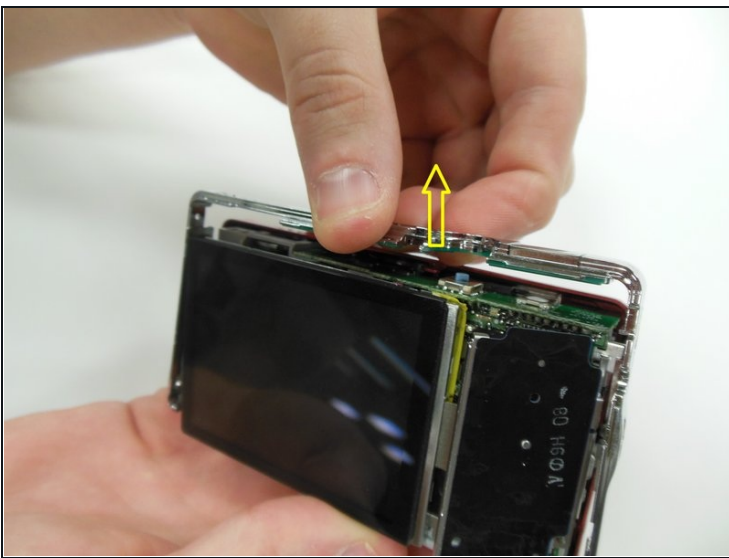


## Step 6



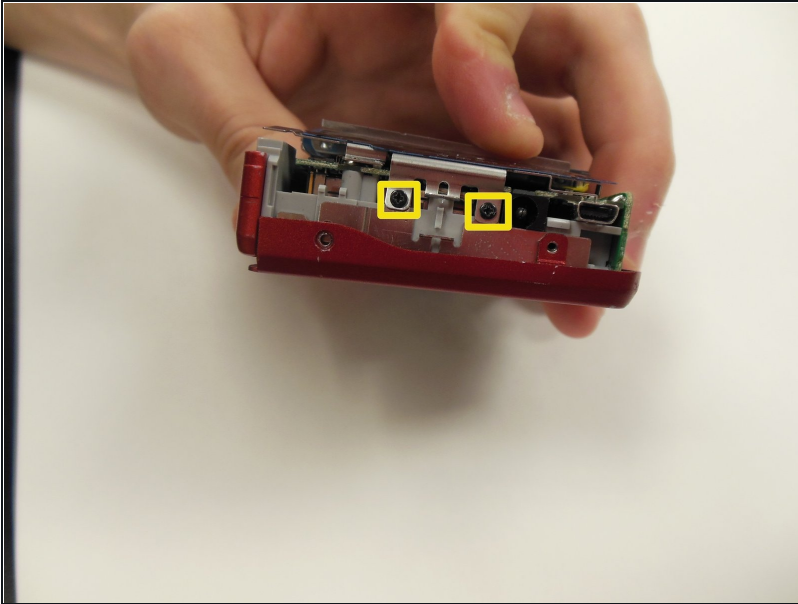
- Remove dial button located on top of camera, by gently pulling up.

## Step 7



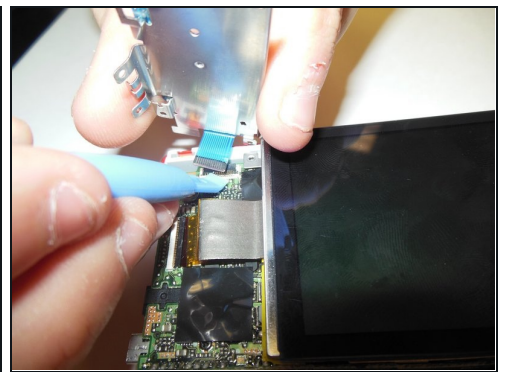
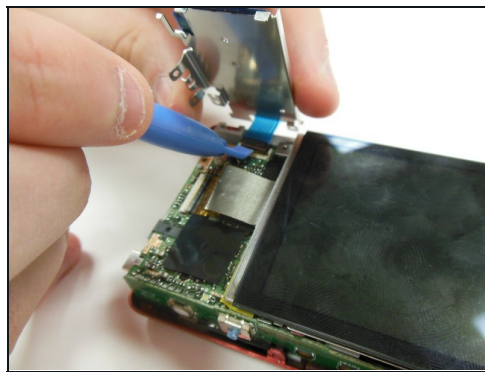
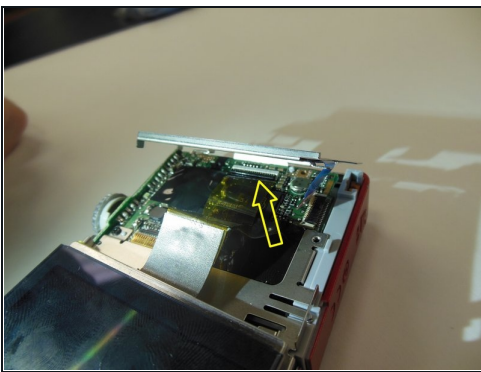
- Starting at one side, carefully work the chrome frame off of the camera itself.
  - ⓘ Be careful not to disturb the shutter or flash buttons on top of the camera.

## Step 8



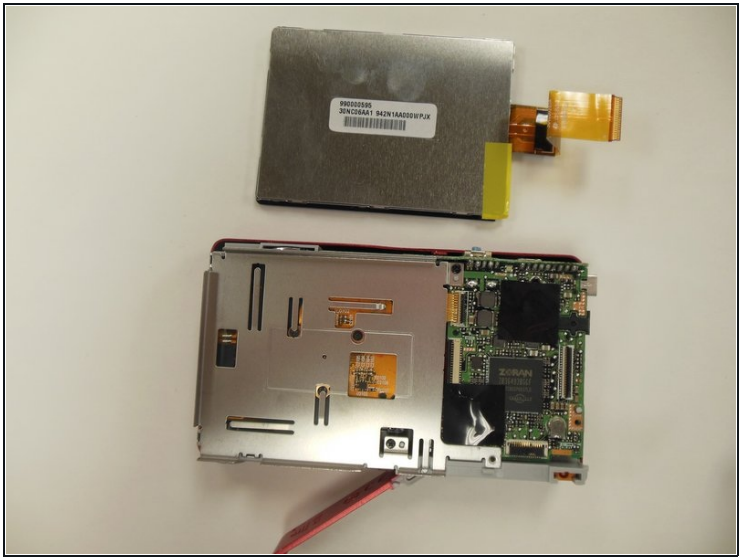
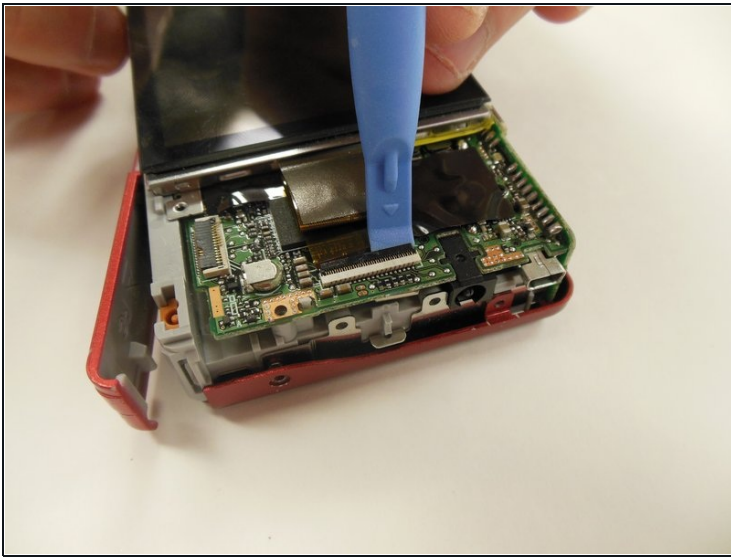
- On the right side of the camera, locate and remove the two 3.25 mm screws as highlighted.

## Step 9



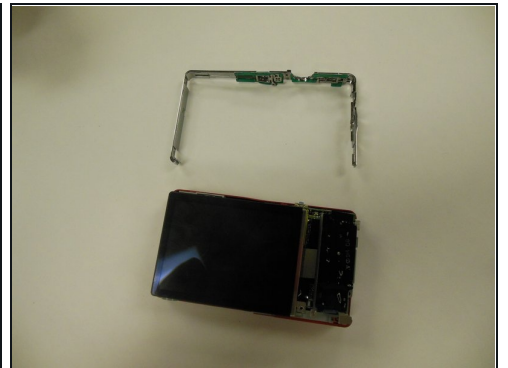
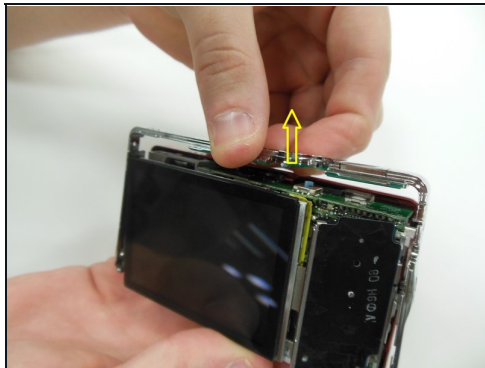
- Carefully lift the motherboard panel up, pulling towards the left. Make sure you do not rip the blue ribbon.
- Using a plastic opening tool, gently lift up on the ribbon fastener until it is in an upright position.
- Slide panel away from camera.

## Step 10



- Using a plastic opening tool, gently lift ribbon clamp as indicated to remove the screen ribbon from the motherboard.
- Screen should now be detached. Gently lift it away from the base of the camera.

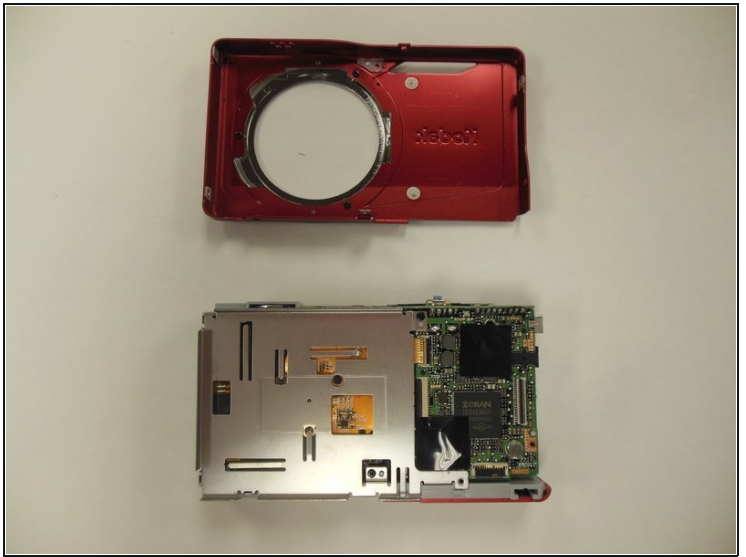
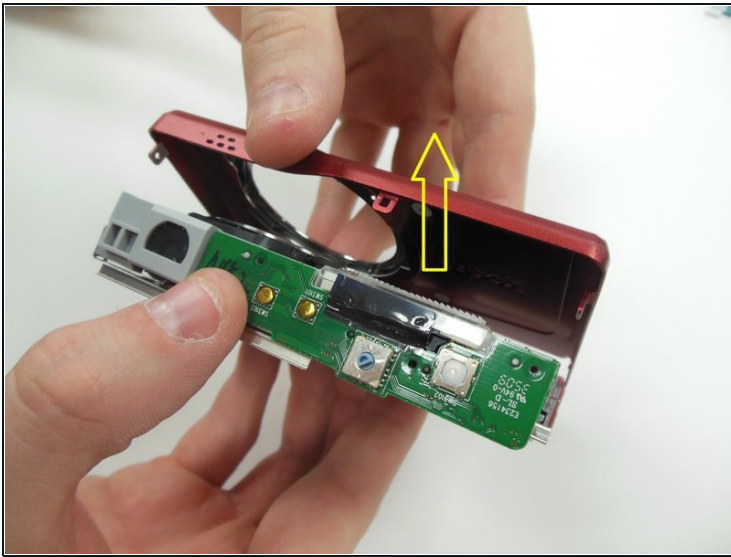
## Step 11 — Battery Latch



- Locate and remove selector dial on the top of the camera.
- This should free the chrome mid-frame that encompasses the camera. Carefully lift and remove it as well.

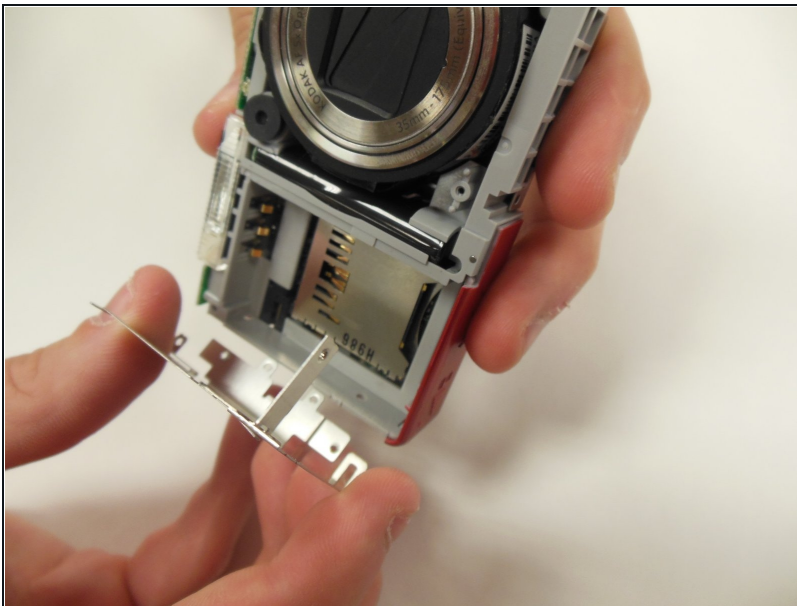


## Step 12



- Carefully lift and remove front covered panel from the camera.

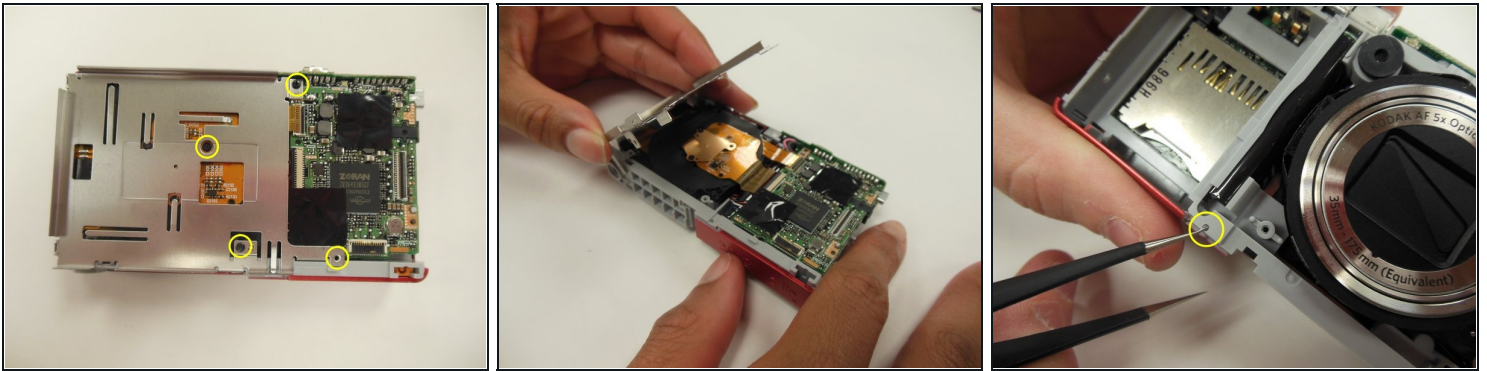
## Step 13



- Locate metal battery panel. Carefully lift and remove it as indicated.

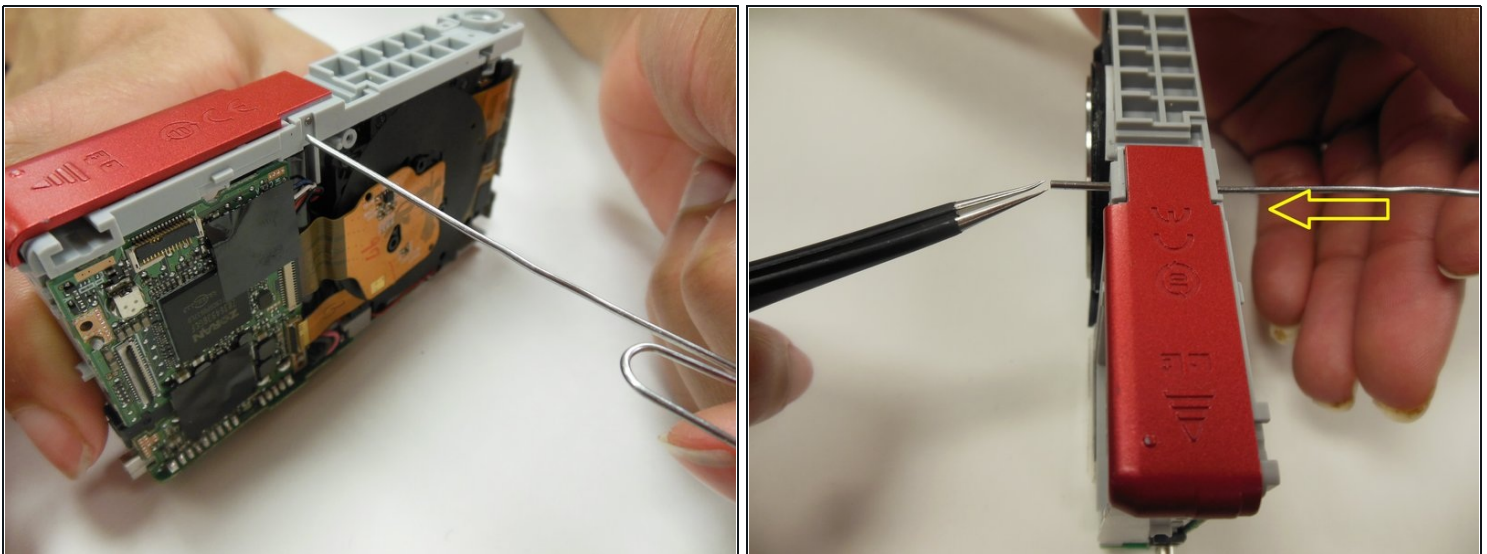


## Step 14



- Locate the four 3.25 mm screws holding the metal lens panel in place, and remove them.
- You should then be able to lift and remove the metal paneling. This will now expose the pin holding the battery latch in place as indicated.

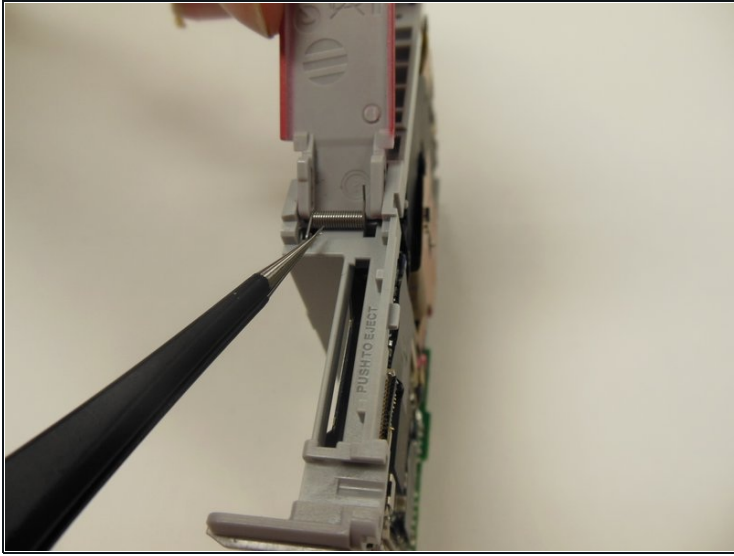
## Step 15



- Keeping the battery latch panel closed and in place, use a straightened paper clip (or similar tool) to push the pin out of the hole.
- Use tweezers to securely remove pin.
  - ⓘ Placing the pin on a magnet pad or piece of tape is recommended to prevent from losing it.

⚠ The spring is under tension. When performing this step, it may fly out if not done correctly. Take proper precautions to minimize injury and loss of parts.

## Step 16



- The latch can now easily be pulled out of place and removed.

---

To reassemble your device, follow these instructions in reverse order.