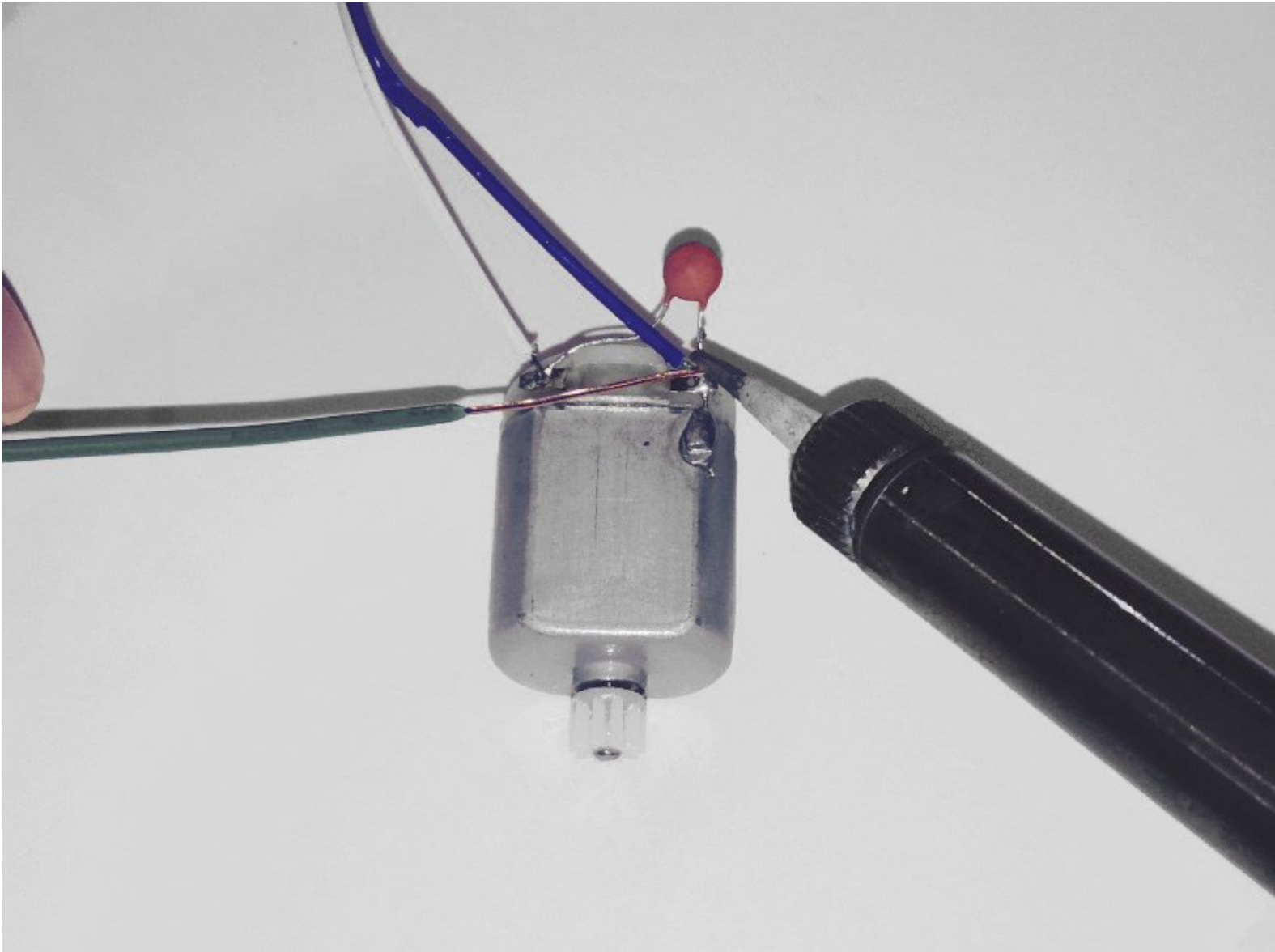




# Geardup RC Ford Mustang GT Motor Replacement Guide

Use this guide to replace the motor in the GEAR'D UP RC Ford Mustang GT.

Written By: Matthew Seno



---

## INTRODUCTION

The motor is one of the most important parts in the RC car as it turns the car's wheels. If your car's wheels are not turning, you can follow these steps to replace the motor.

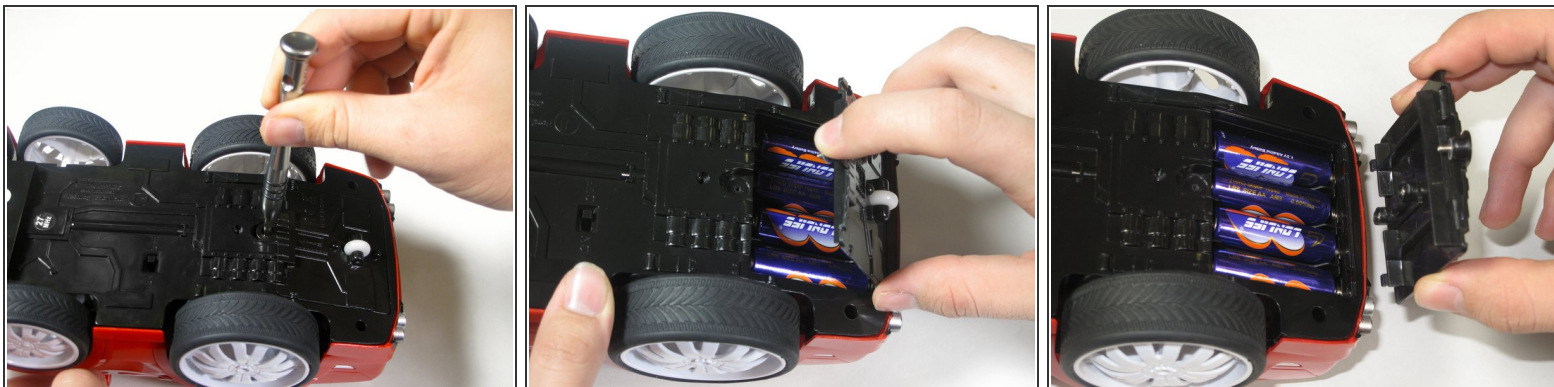
Note: This guide will involve soldering. For information on how to solder, please visit iFixit's [Soldering Skills](#) page.



### TOOLS:

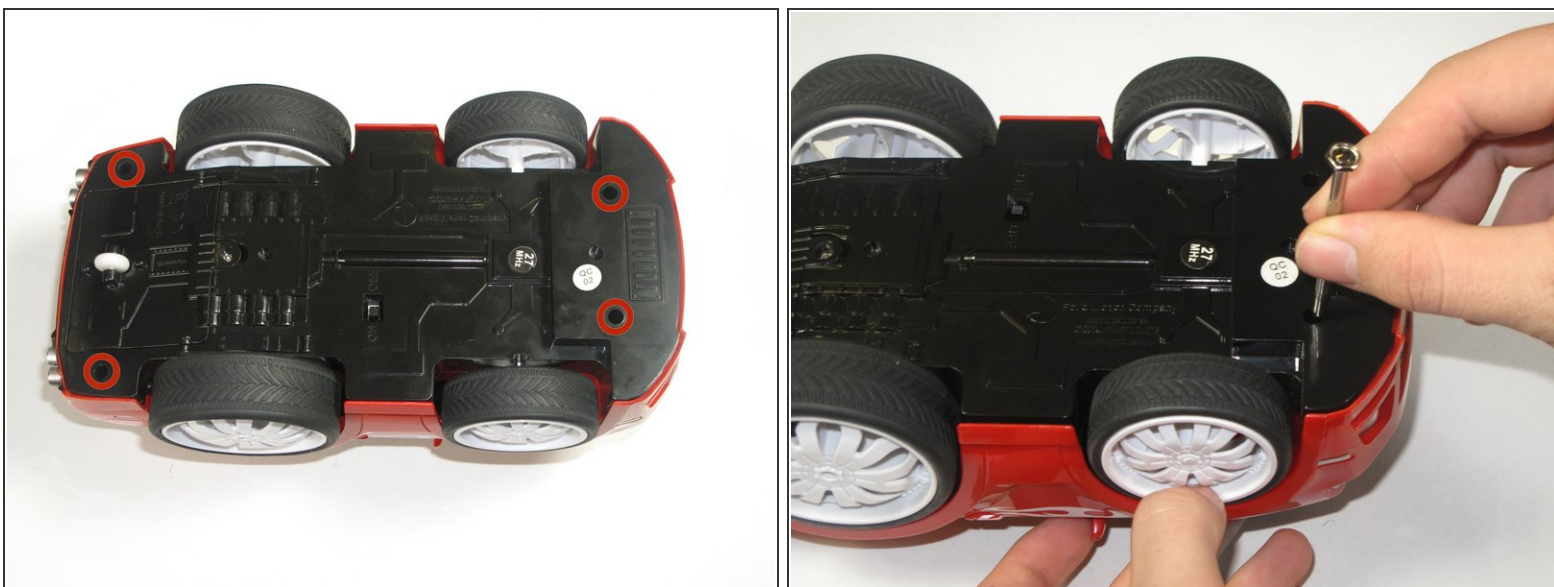
- [Soldering Workstation](#) (1)
  - [iFixit Opening Tools](#) (1)
  - [Phillips #0 Screwdriver](#) (1)
-

## Step 1 — Battery Cover



- Remove the 5mm Phillips #0 screw from the bottom of the car, located between the rear wheels.
- Gently lift the battery cover from the car to expose the batteries.

## Step 2 — Lower RC Car



- Flip the car over and remove the four 5mm Phillips #0 screws that hold the shell to the car chassis.

### Step 3 — Shell



- Flip the car over again to its upright position and vertically lift the shell from the car.
- ★ During re-assembly, make sure the shell is correctly aligned. If it is not aligned correctly, it may rub on the wheels, possibly preventing them from turning.

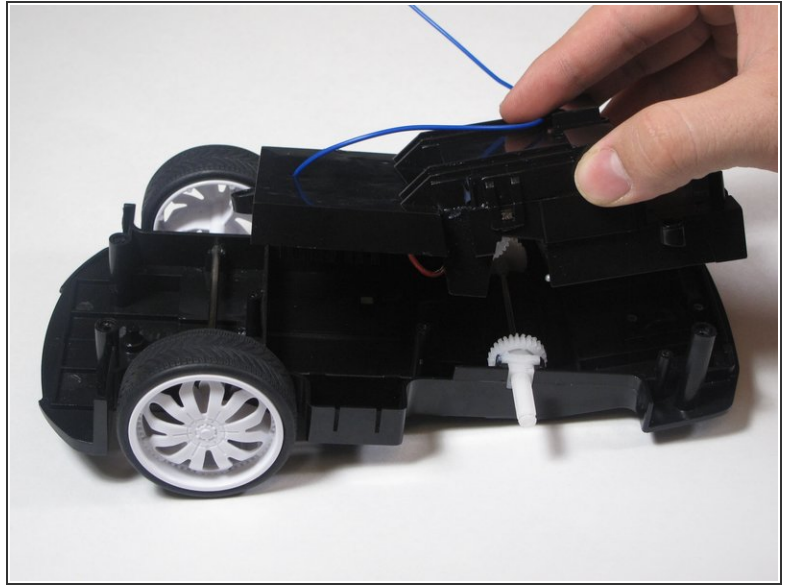
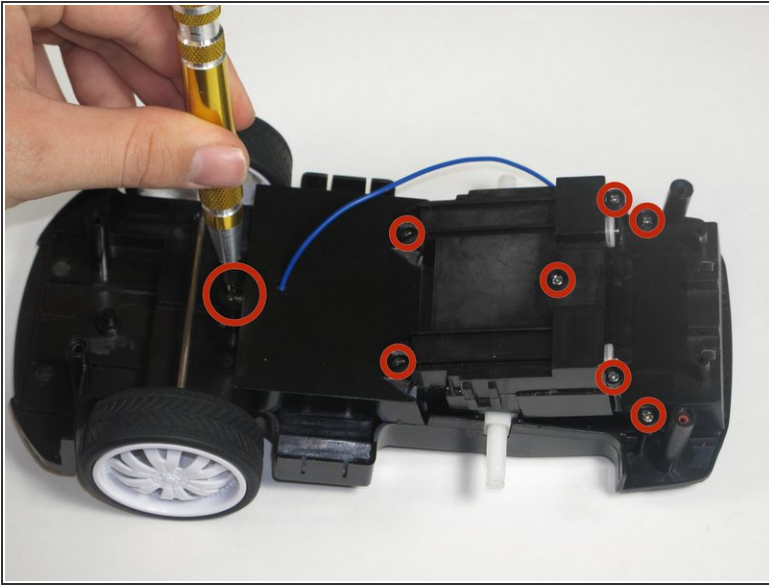
### Step 4 — Rear Wheels



- Unscrew and remove the 5mm Phillips #0 screw located at the center of the wheel while holding the wheel still.
- Slide the wheel off of the axle.
- Repeat the previous steps for the other rear wheel.

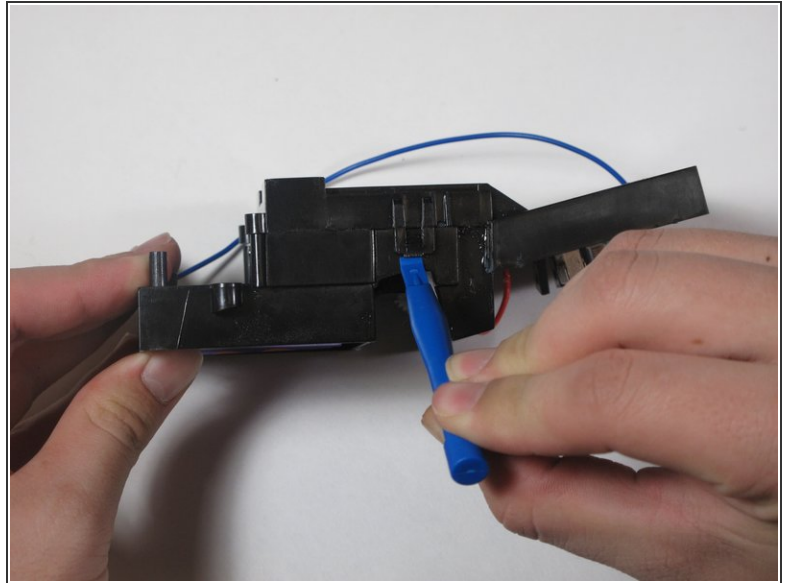
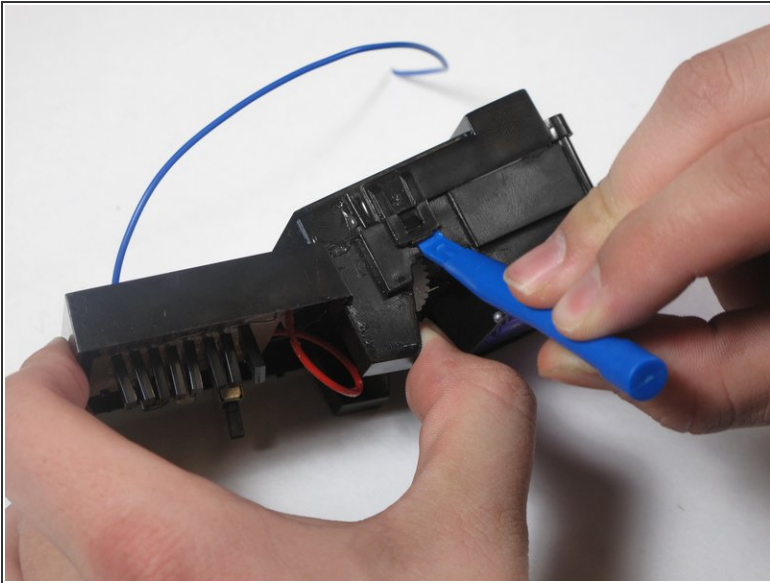
This document was generated on 2020-11-28 12:16:31 AM (MST).

## Step 5 — Motor/Circuit Board Enclosure



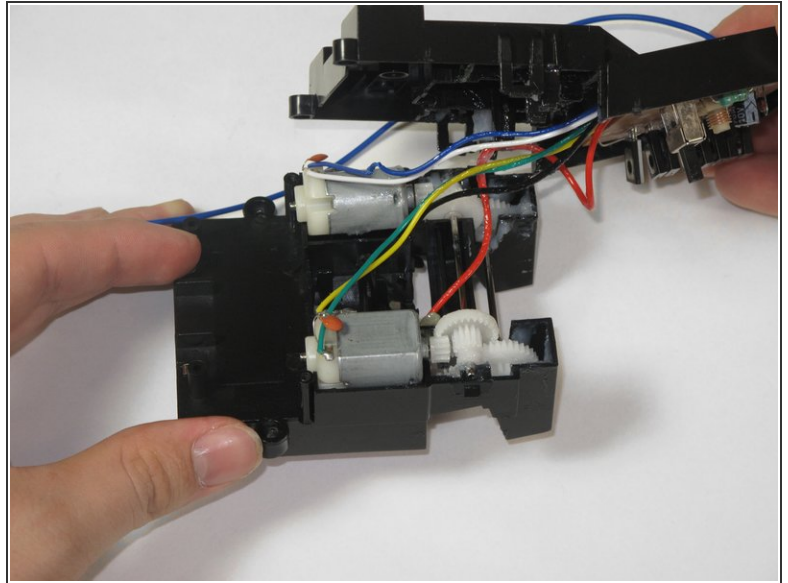
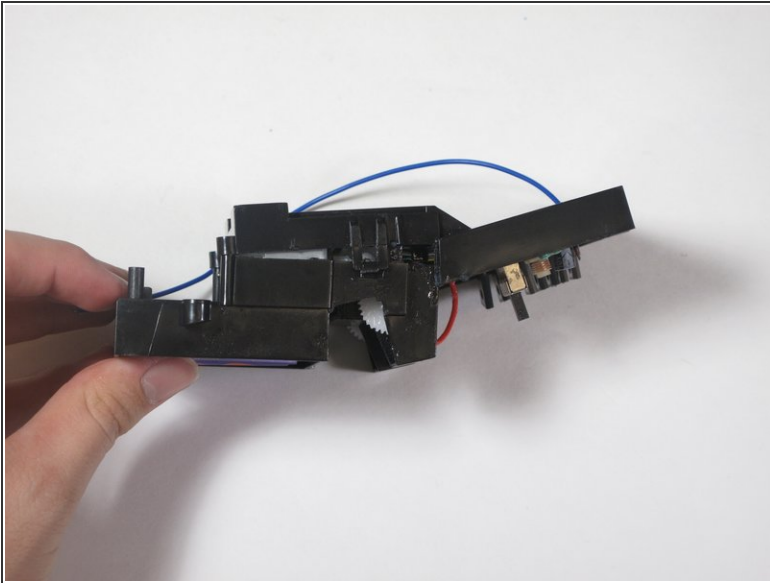
- Remove the eight 5mm Phillips #0 screws located on the top of the motor/circuit board enclosure.
- Vertically lift the motor/circuit board enclosure from the car chassis.

## Step 6



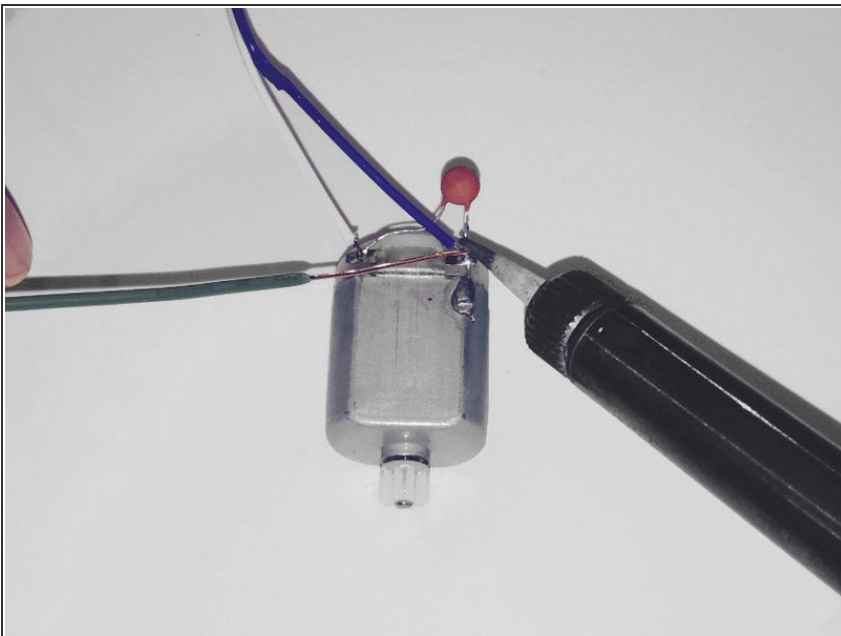
- Using a small plastic opening tool, gently pry the clips to release the tabs on the circuit board casing. The clips can be located above where the rear wheels used to be.
- ⚠ Lift the clips just enough to release them from the tabs. If they are pried too far, they may snap off.
- ⓘ There is a clear gear grease inside the enclosure.

## Step 7



- Lift the circuit board casing from the enclosure to reveal the motors, gears, and circuit board.
- ✦ During re-assembly, make sure the wires are not pinched between plastic dividers in the enclosure as this may damage them.

## Step 8 — Motor



- Using the copper solder wick, remove the solder from the two wires at the points where they connect to the motor.

To reassemble your device, follow these instructions in reverse order.