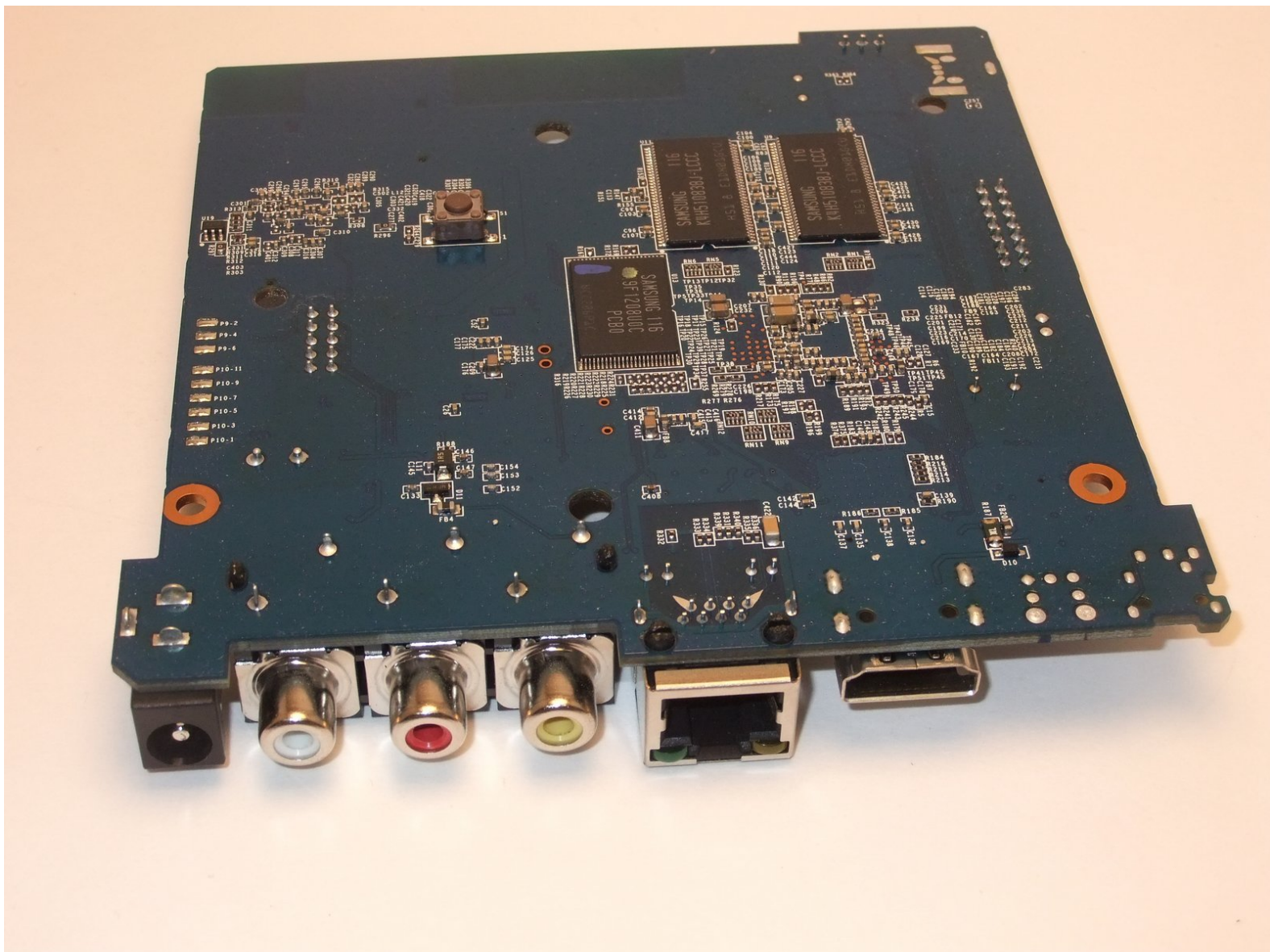




# Roku XD 2050X Motherboard Replacement

Use this guide to remove and replace the motherboard in your Roku 2050X.

Written By: William



---

# INTRODUCTION

In this guide, we'll show you how to replace the motherboard in your Roku XD 2050X.



## TOOLS:

- [Phillips #1 Screwdriver](#) (1)
  - [Spudger](#) (1)
-

## Step 1 — Case



- ⚠ Ensure the Roku XD is unplugged.
- ⚠ Take care when handling components. Circuit boards, soldering points, and other areas may have sharp points.
- Turn the device upside down.
- Remove the two rubber pads using a plastic spudger.

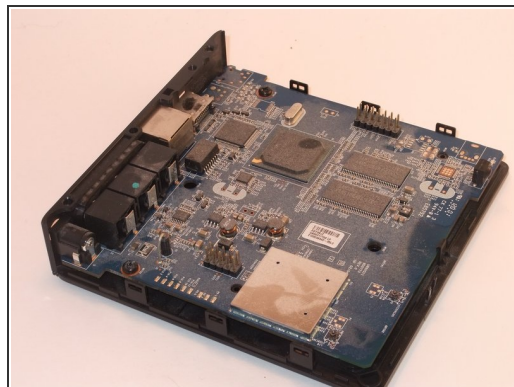
## Step 2



- Remove the two Phillips #1 9mm pan-head screws.

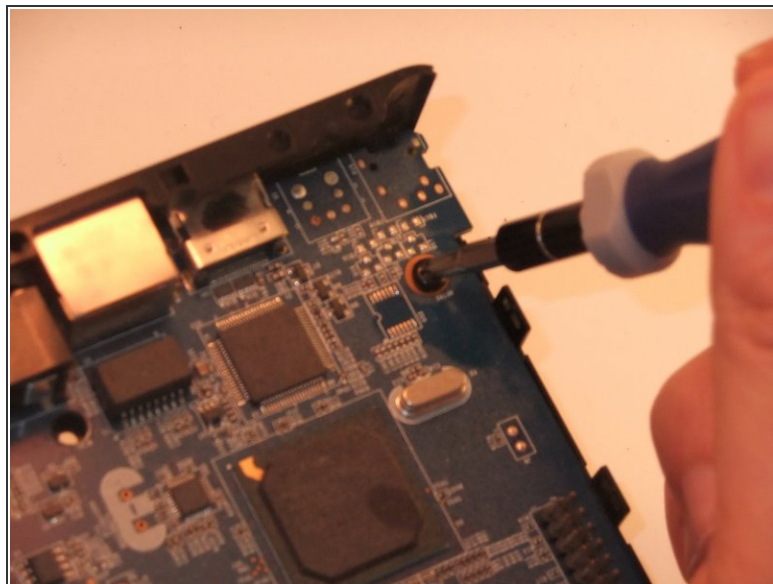
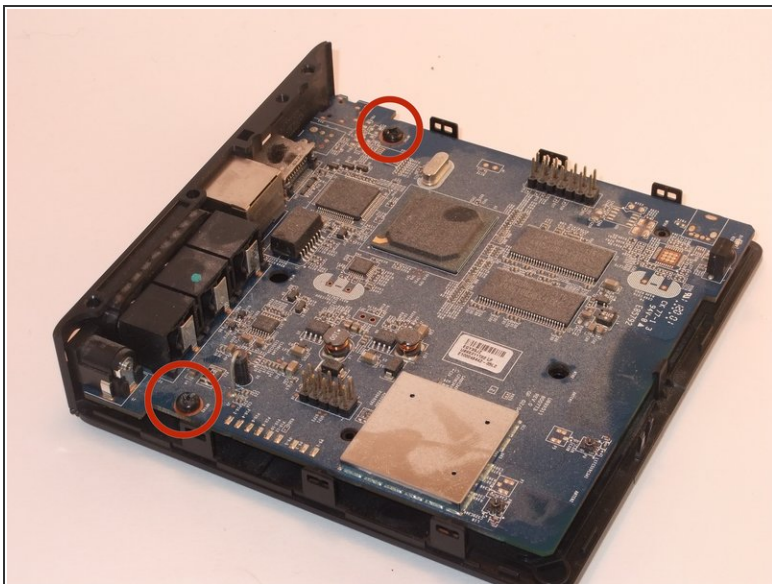


## Step 3



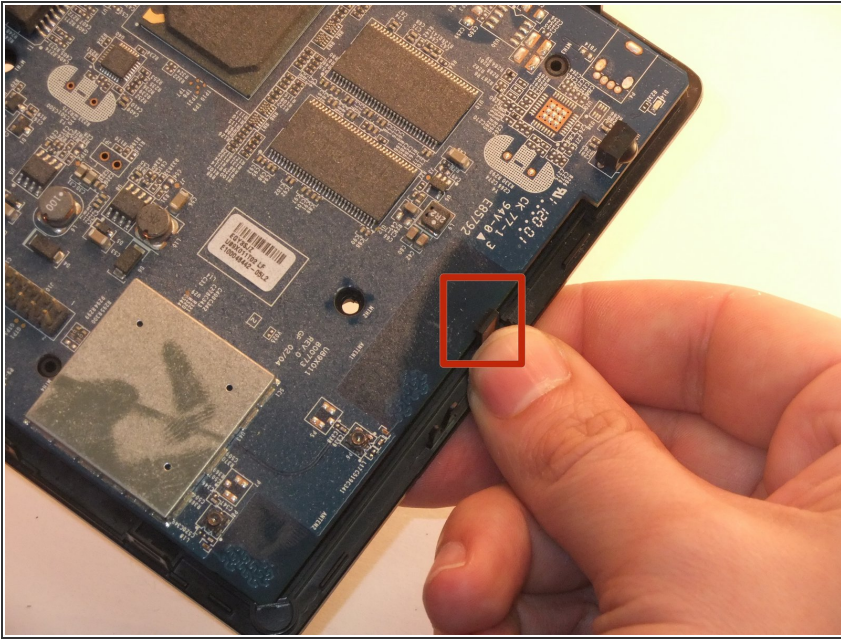
- Insert spudger between upper and lower frame underneath the port access.
- Guide spudger around to loosen upper and lower frame to pry frame apart.
- Gently remove upper frame.

## Step 4



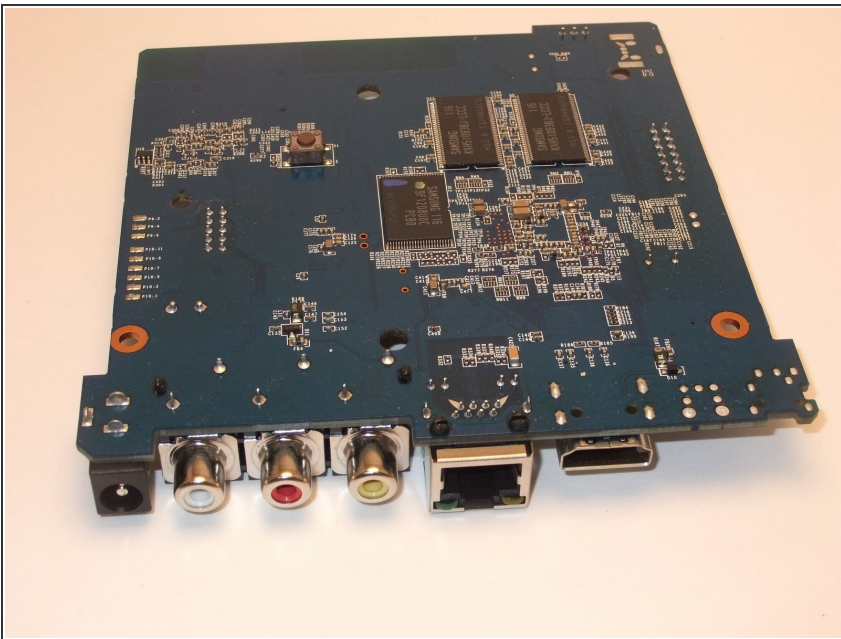
- Remove the two Phillips #1 8mm pan-head screws.

## Step 5



- On the side of the board opposite the ports, find and tilt back the tab securing the board in place.
- Lift the motherboard out of the lower frame.

## Step 6 — Motherboard



- Replace the faulty motherboard with the new motherboard.
- ☑ Be sure to dispose of the faulty motherboard properly. Recycle if possible!

To reassemble your device, follow these instructions in reverse order.