

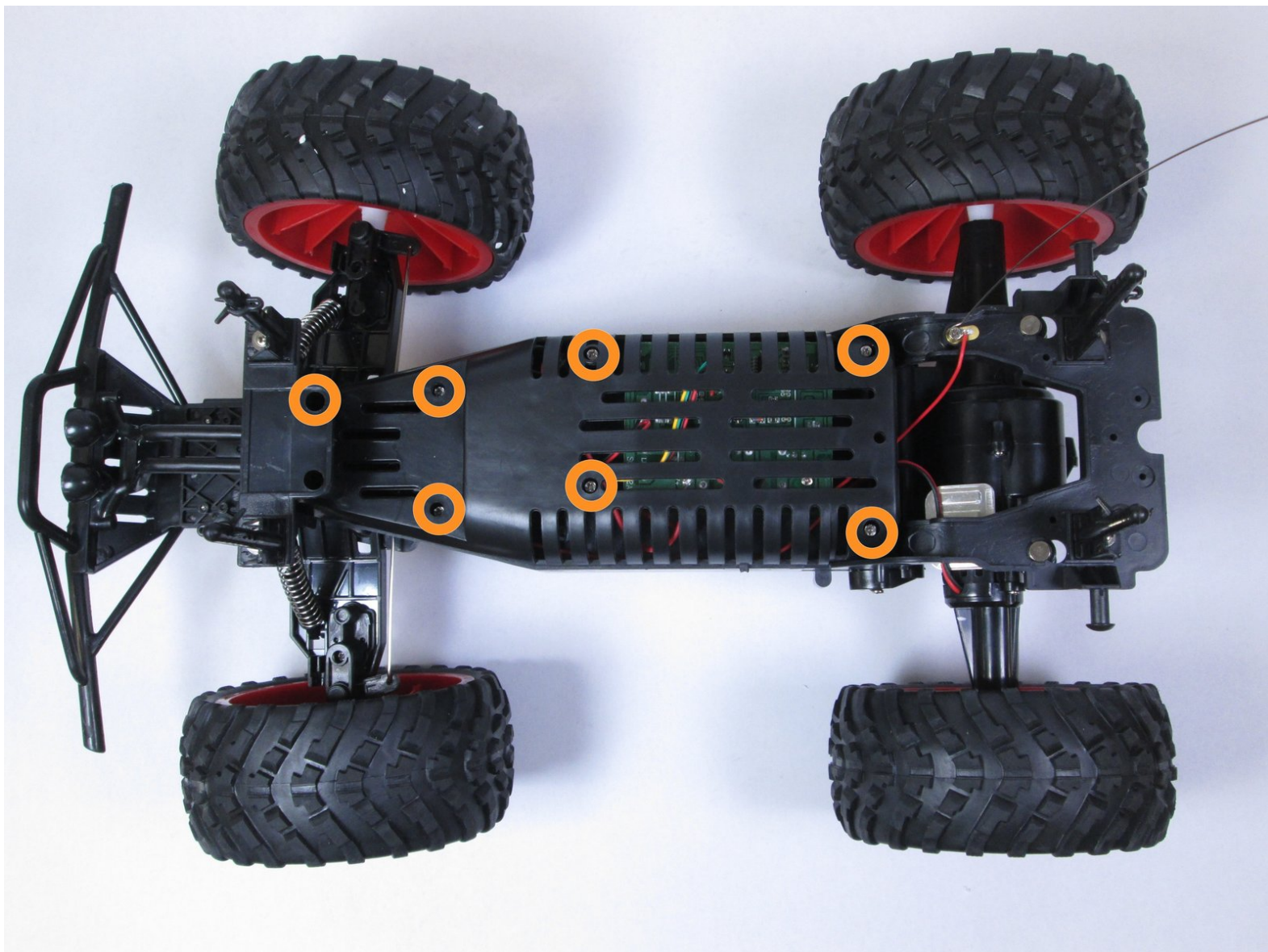


Torque King Electric RTR RC Monster Truck

Steering Servo Replacement

In this guide, we will walk you through the replacement of the steering mechanism of the truck.

Written By: Thomas White



INTRODUCTION

This guide requires soldering, a guide for which can be found [here](#).



TOOLS:

- [Phillips #00 Screwdriver](#) (1)
 - [Phillips #1 Screwdriver](#) (1)
 - [Soldering Workstation](#) (1)
-

Step 1 — Casing



- From the top view, remove each of the four pins that hold the casing in place.

Step 2



- Slowly pull the casing up to remove it.

Step 3 — Battery



- Beginning at the bottom of the truck, twist the release clip on the casing until the release clip is no longer covering the battery casing.

Step 4



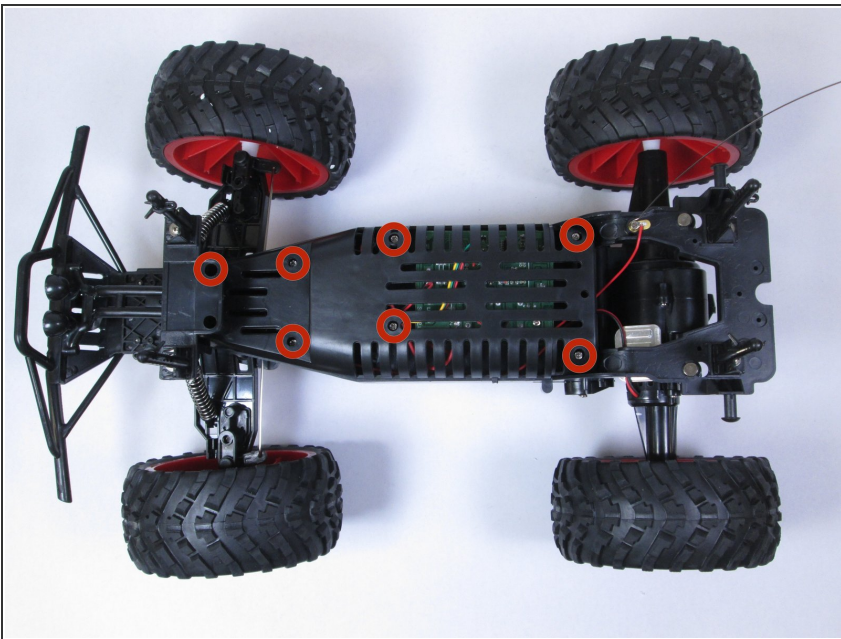
- Next, use a Phillips 00 screwdriver to remove the 8mm screw on the battery casing and remove the battery casing.

Step 5



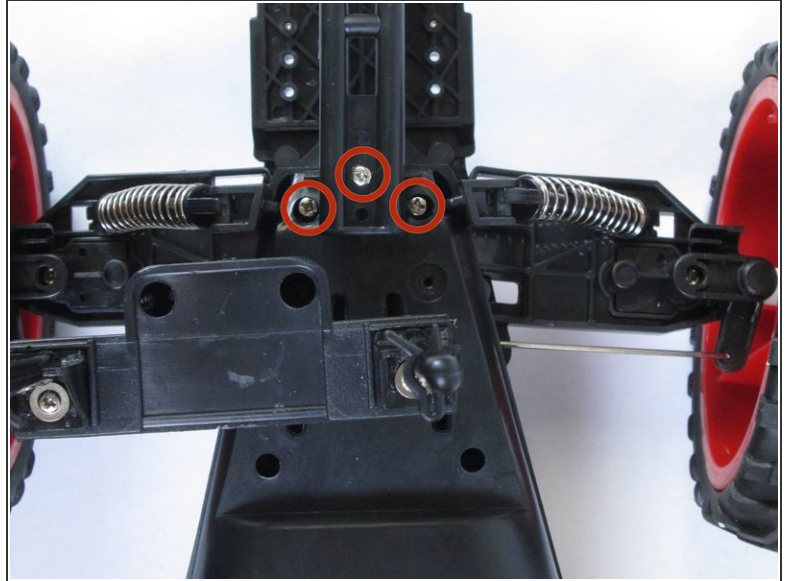
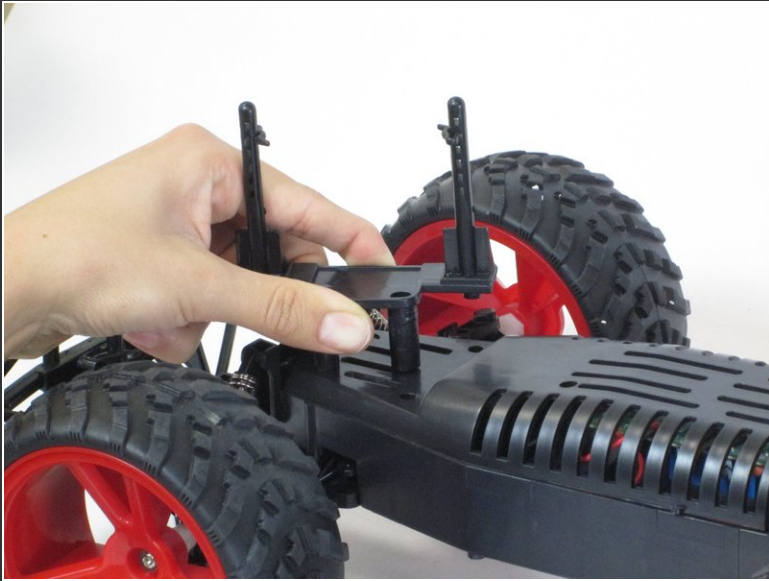
- ⚠ Do not skip this step if you are continuing onto the next step, you will risk electric shock.
- Finally, remove the battery from the white connector by squeezing the clip on the connector while pulling.

Step 6 — Steering Servo



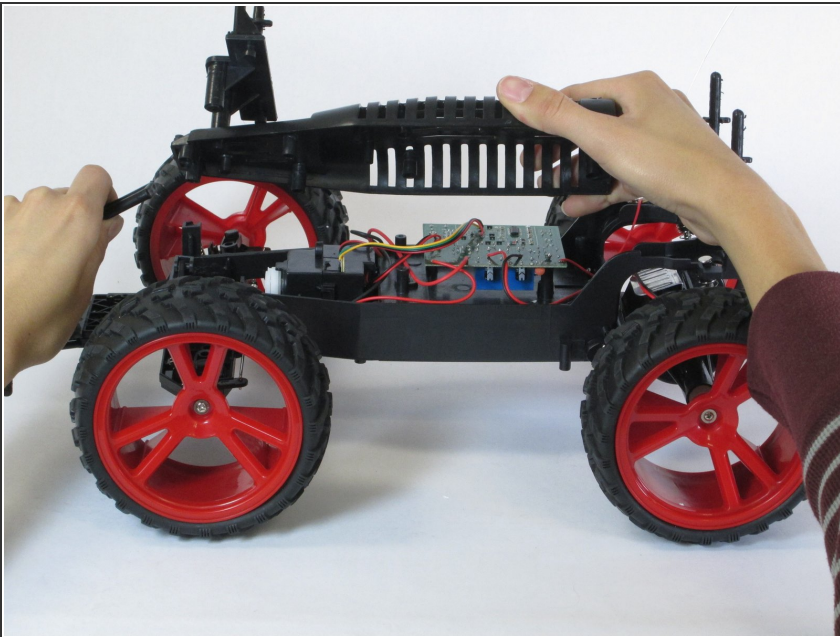
- Remove the shell of the truck. Using a Phillips #1 screwdriver, remove the seven 10mm screws highlighted.

Step 7



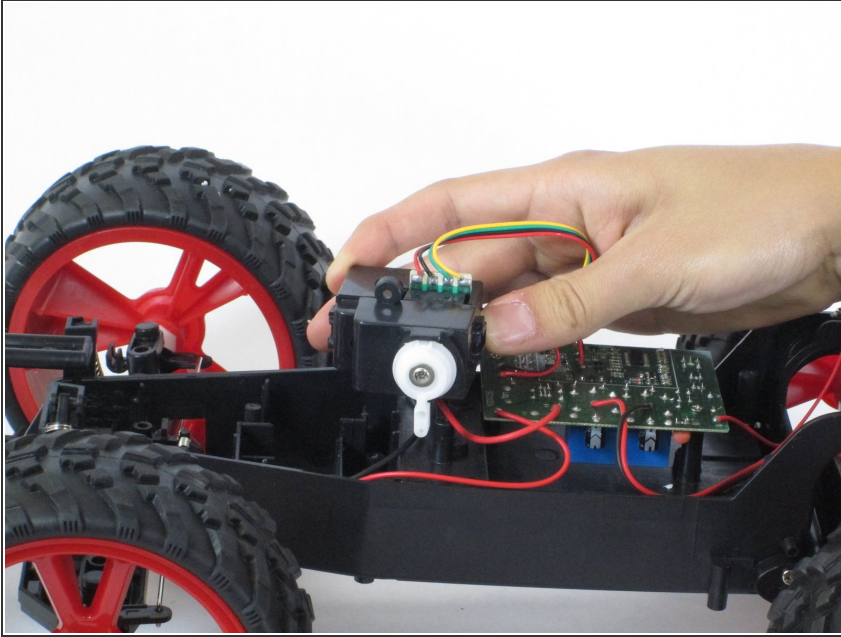
- Next, rotate the part that supports the truck casing 180 degrees. Use a Phillips #1 Screwdriver to remove the three highlighted screws.

Step 8



- While lifting the part attaching the bumper to the shell of the truck, remove the shell by lifting it upwards and towards the back end of the truck simultaneously.

Step 9

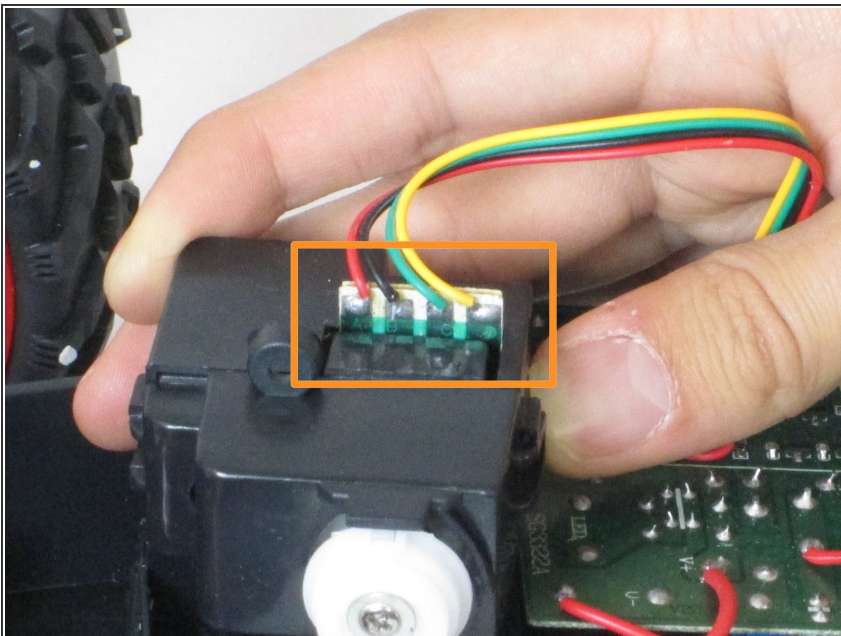


Warning: Do not continue if you skipped the battery removal steps of this guide. If you do, you risk injury by electric shock.

- Now that the shell is removed, carefully lift the steering servo so that you can begin to detach it from the electronics of the truck.

Caution: Do not pull the servo with too much force or too far to avoid damage to the wires.

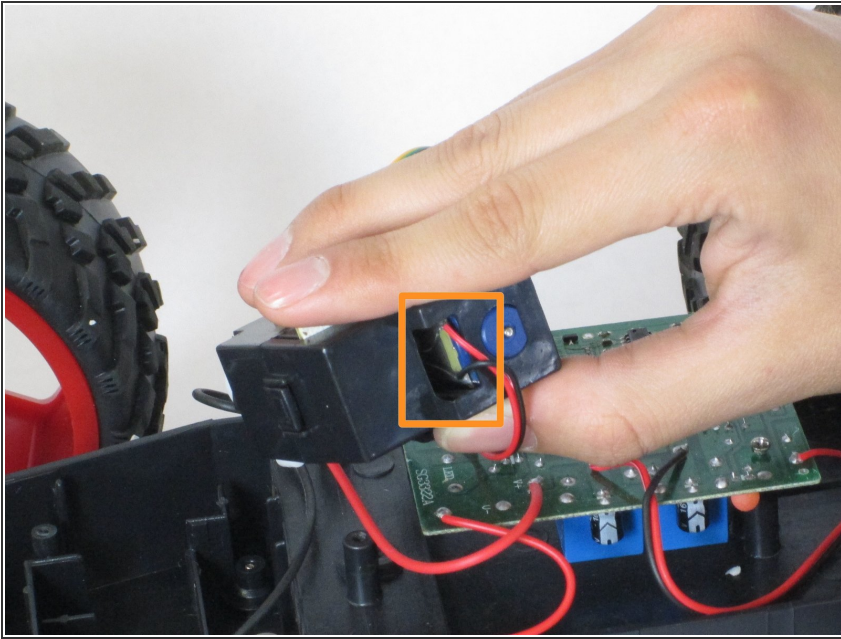
Step 10



i Make note of the order of the colors of the wire.

- Desolder the four connections in the box shown. From the view shown and from left to right, the order is red, black, green, and yellow.

Step 11



- Again noting where each color of wire is supposed to connect, desolder these last two connections.

To reassemble your device, follow these instructions in reverse order.