

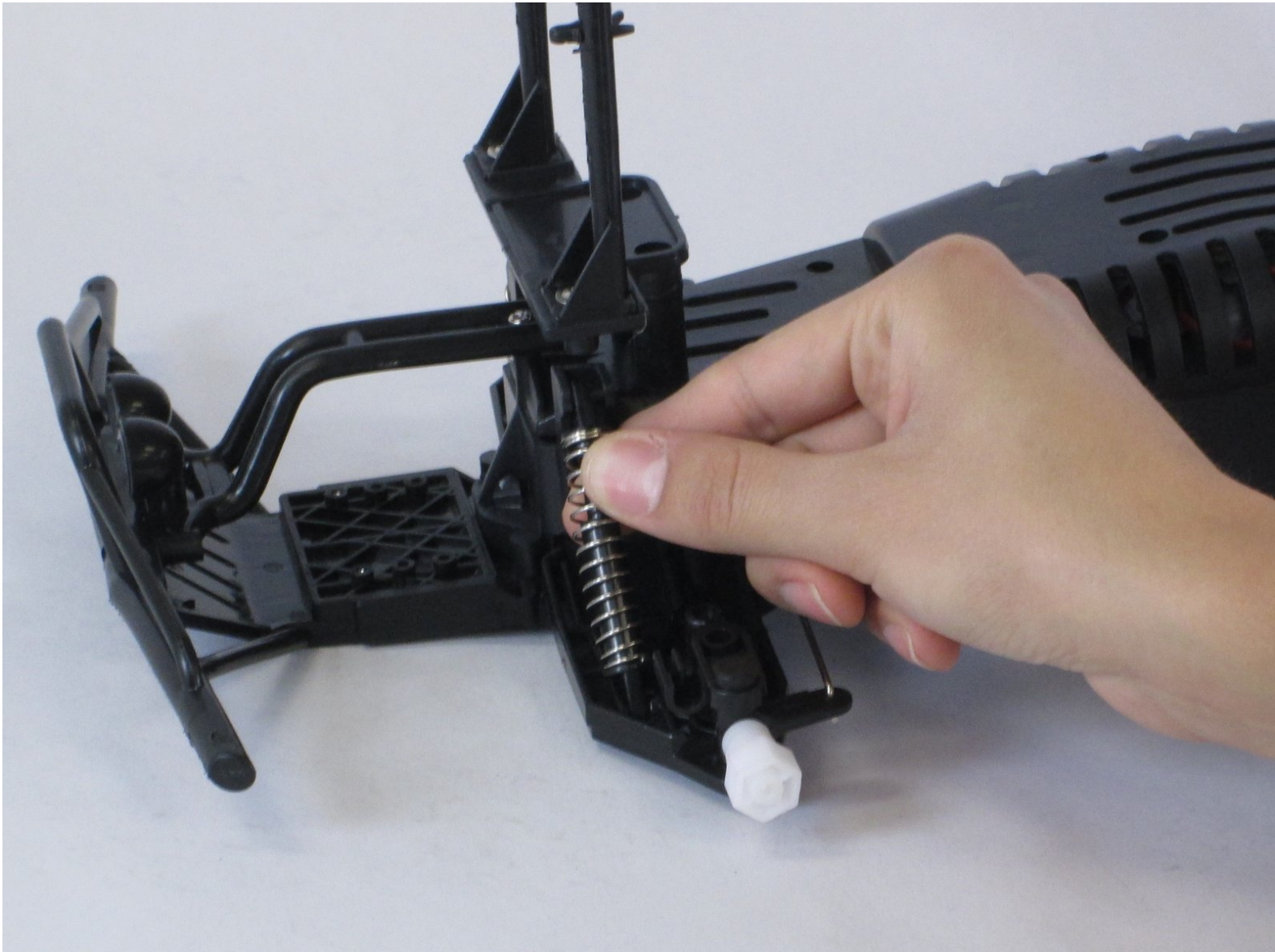


# Torque King Electric RTR RC Monster Truck

## Front Wheel Suspension Replacement

This guide gives steps on how to replace the two front wheel suspensions.

Written By: Maximiliano Cortes



---

## INTRODUCTION

This guide requires removing the casing and front wheels.



### TOOLS:

- [Phillips #1 Screwdriver](#) (1)
-

## Step 1 — Casing



- From the top view, remove each of the four pins that hold the casing in place.

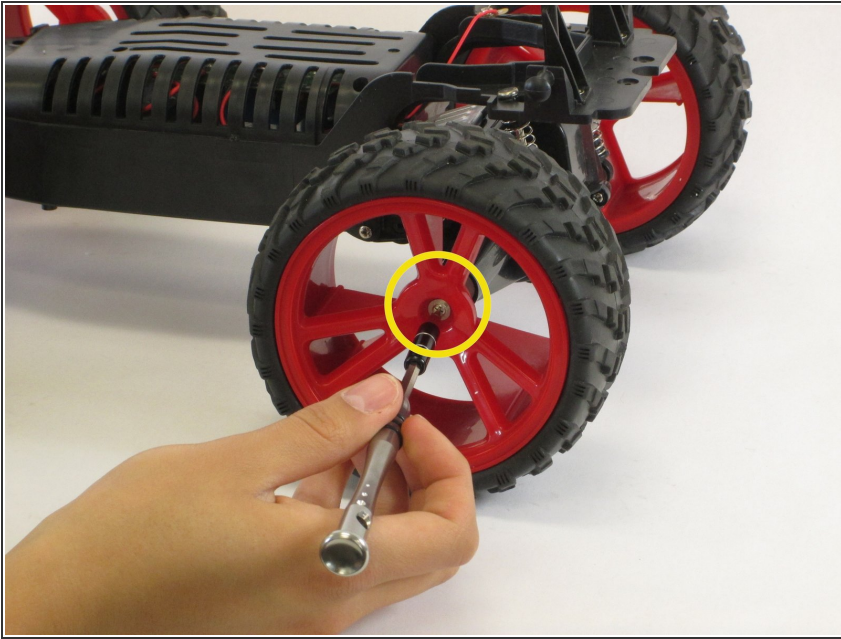
## Step 2



- Slowly pull the casing up to remove it.

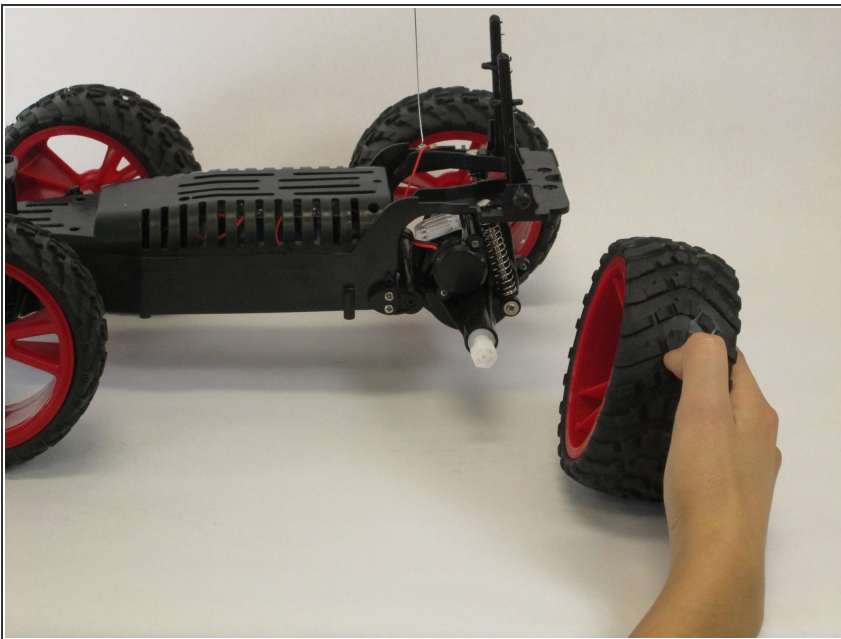


### Step 3 — Removing Screws



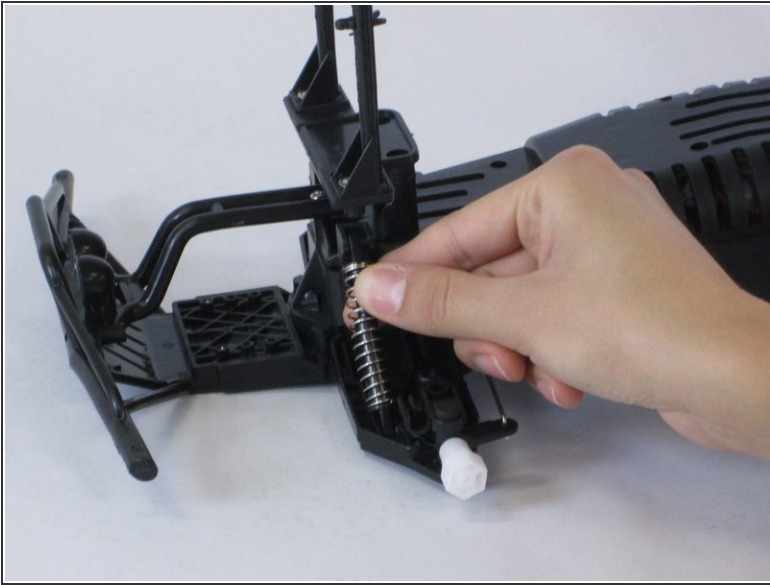
- Using a Phillips 1 screwdriver, completely unscrew the 8mm screw located in the center of the wheel. Repeat this step for other wheels if needed.

### Step 4 — Removing the Wheel



- Carefully pull the wheel off of its axle. Repeat for other wheels as necessary.

## Step 5 — Front Wheel Suspension



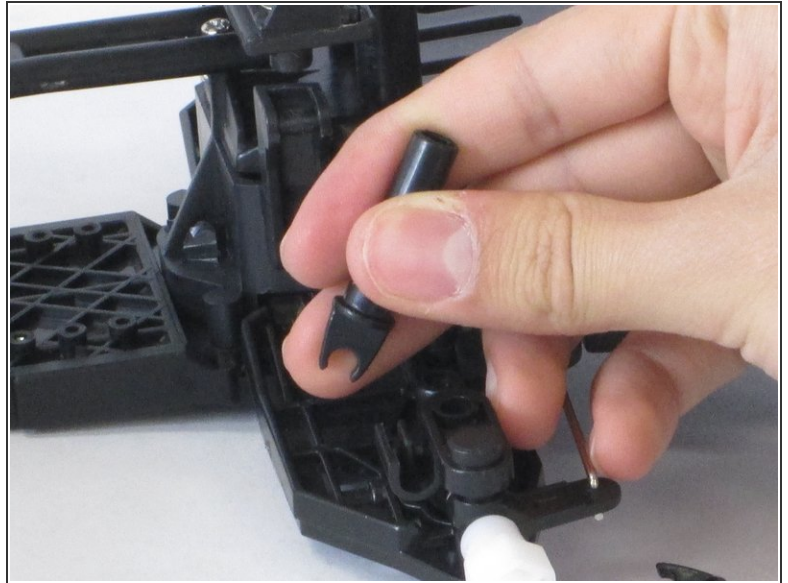
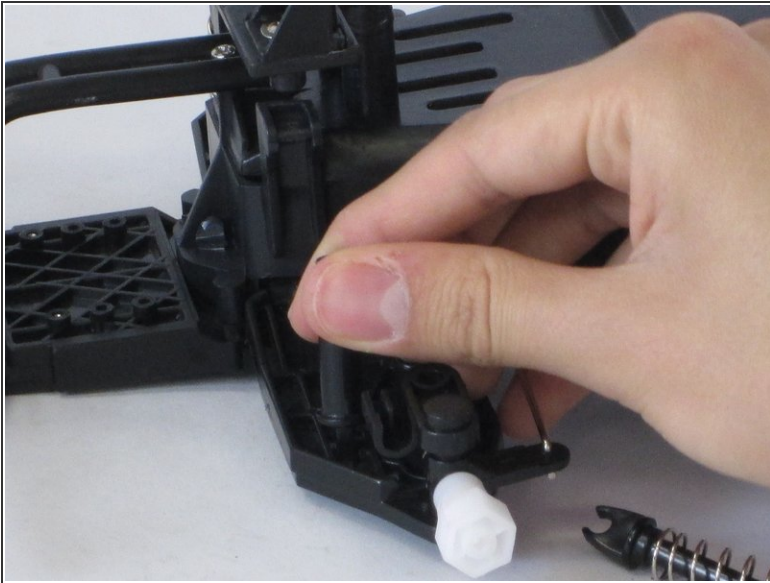
- Pull the top half of the suspension to unclip it.

## Step 6



- Remove the top clip along with the spring.

## Step 7



- Pull up the bottom half of the suspension to unclip it.

To reassemble your device, follow these instructions in reverse order.