



# Logitech Dual Action Joystick Replacement

If the joystick on your Logitech Dual Action...

Written By: Brian Neuman



# INTRODUCTION

If the joystick on your Logitech Dual Action controller isn't working properly, refer to the guide to walk you through how to replace the joystick on your Logitech Dual Action controller.

The joystick is an essential part of any controller. A faulty joystick will result in difficulty navigating any software you may encounter where you will need the joystick.

Ensure your controller is disconnected from the power source before beginning your replacement.

---

## TOOLS:

[iFixit Opening Tool](#) (1)

[Pro Tech Toolkit](#) (1)

---

## Step 1 — Taking out the screws



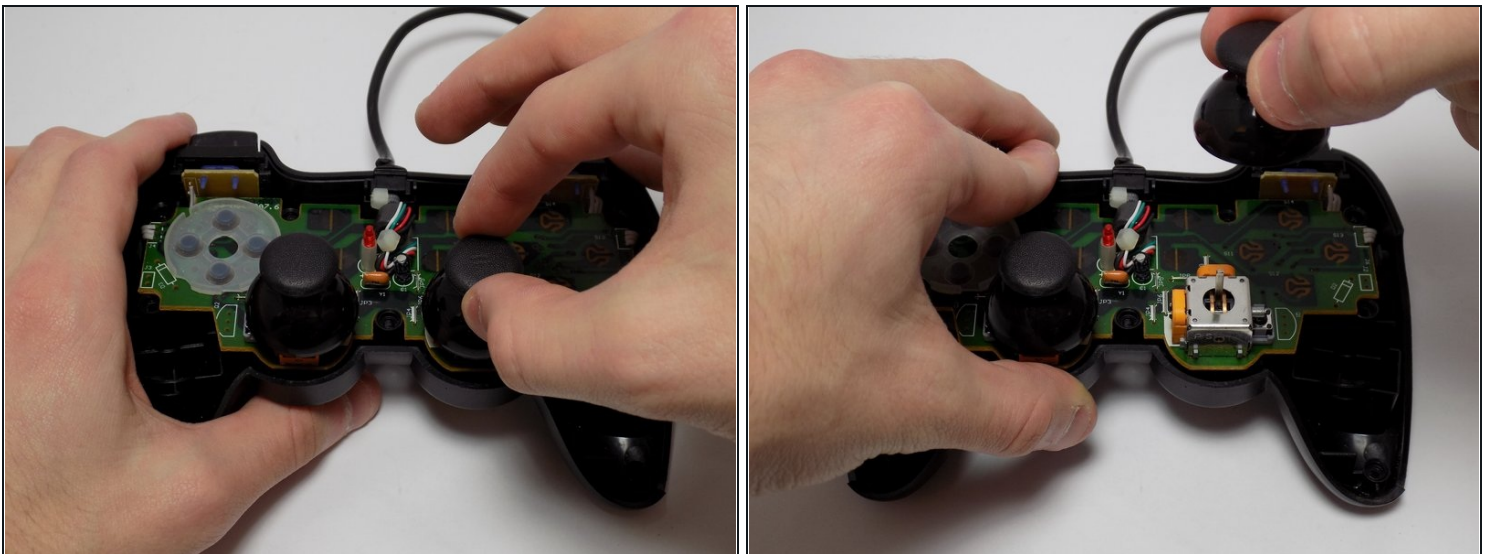
- To get into the controller, you will need to unscrew the 7 screws on the back.
- You will have to remove the bottom oval sticker to reveal the screw marked with orange.

## Step 2 — Opening the controller



- With the screws removed, turn the controller upside down and separate the front end from the back end.
- ① It is likely that the buttons will fall out of place, so as you open the controller, try to keep track of where the pieces go.
  - ★ There should be the 4 circular buttons labeled 1-4, 4 smaller circular buttons for the D-Pad, and 3 rounded rectangular buttons.

## Step 3 — Replacing the joystick



- With the case off, the joysticks can be removed by pulling them upward.
- To put the replacement joystick on, align the hole at the bottom of the joystick with the rectangular peg and gently push down.
  - ① Make sure that the cut-out side of the joystick is towards the outsides of the device.

