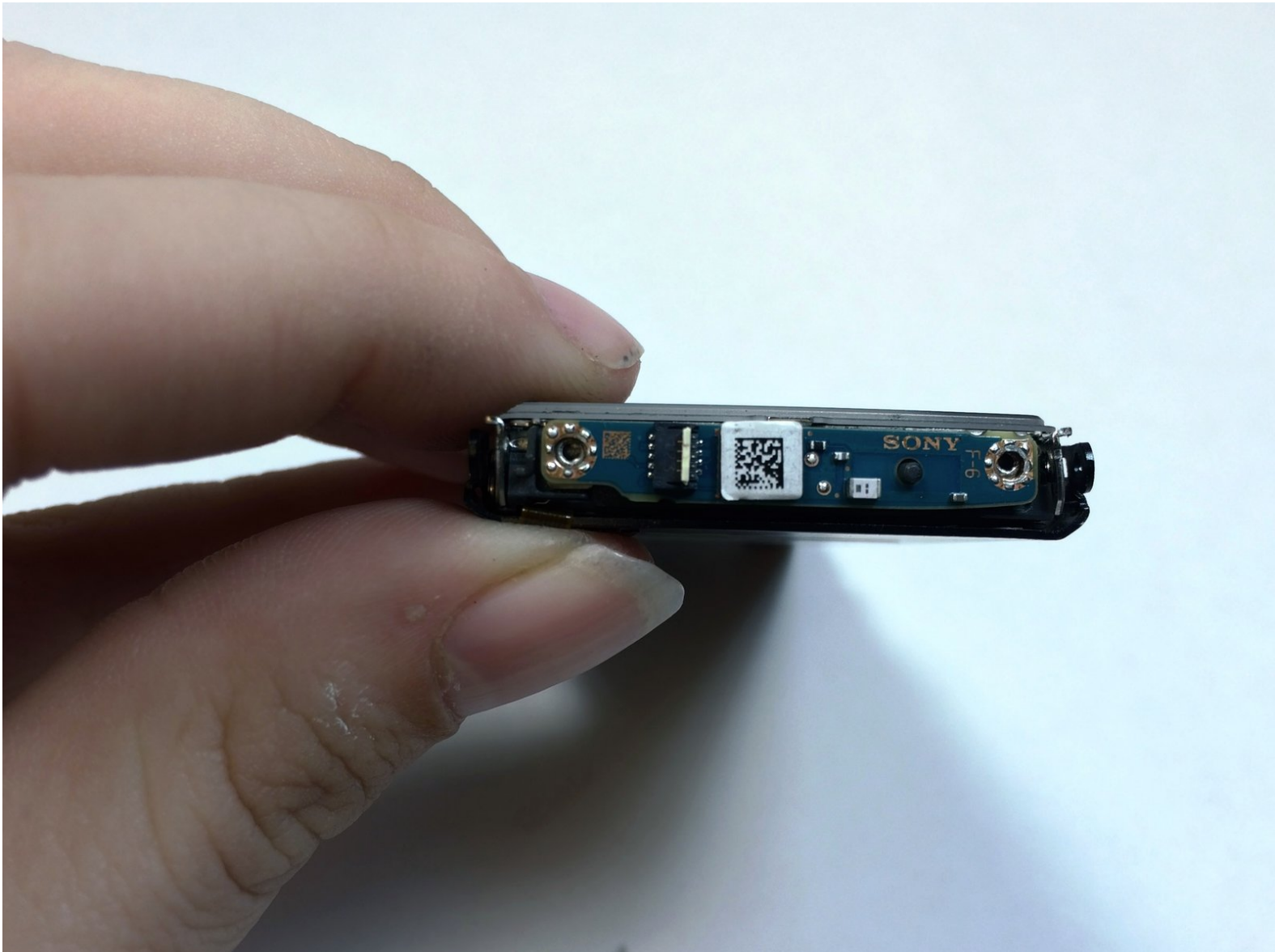




# Sony Walkman NWZ-S764 Bluetooth module Replacement

This guide will walk you through the process of replacing a defective Bluetooth transceiver module.

Written By: John Ferguson





## TOOLS:

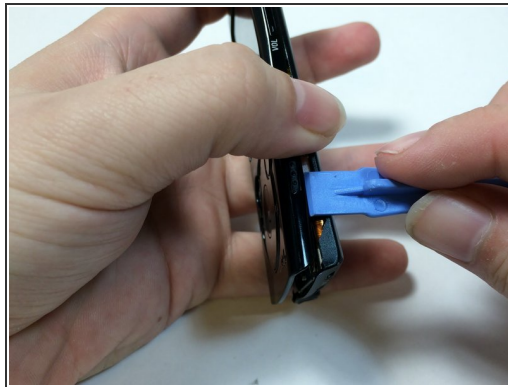
- [Phillips #00 Screwdriver](#) (1)
- [iFixit Opening Tools](#) (1)
- [Spudger](#) (1)

## Step 1 — Removing the back cover



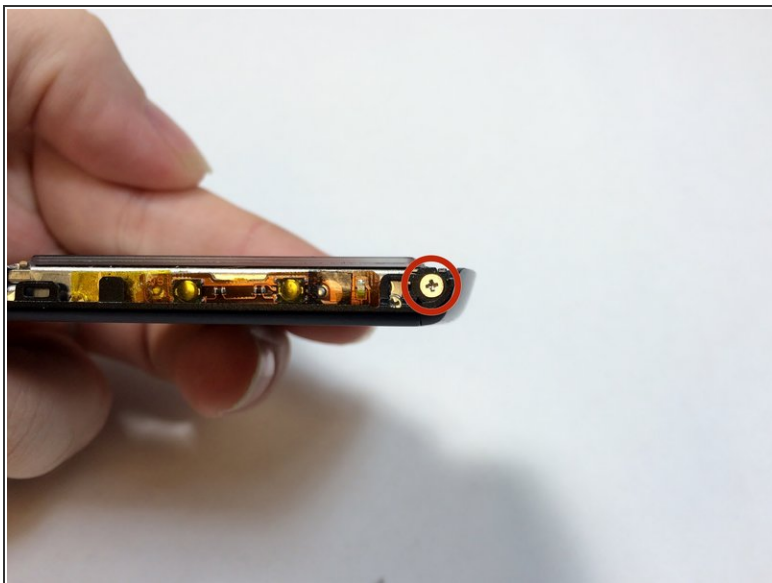
- Remove the two black 6.4mm Phillips screws from the back of the device.

## Step 2



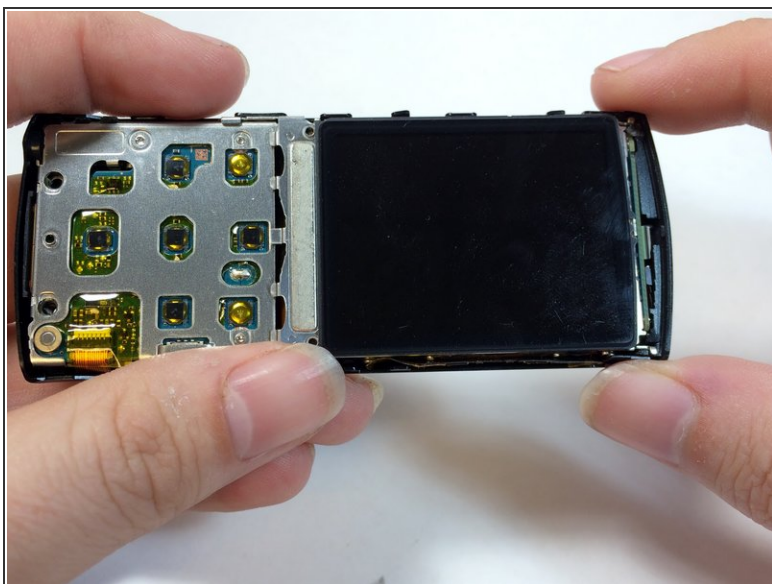
- Using a plastic opening tool, work your way around the edges of the device, carefully prying off the front panel.

### Step 3



- Remove the two 2.8 mm phillips screws located on either side of the device near the top.

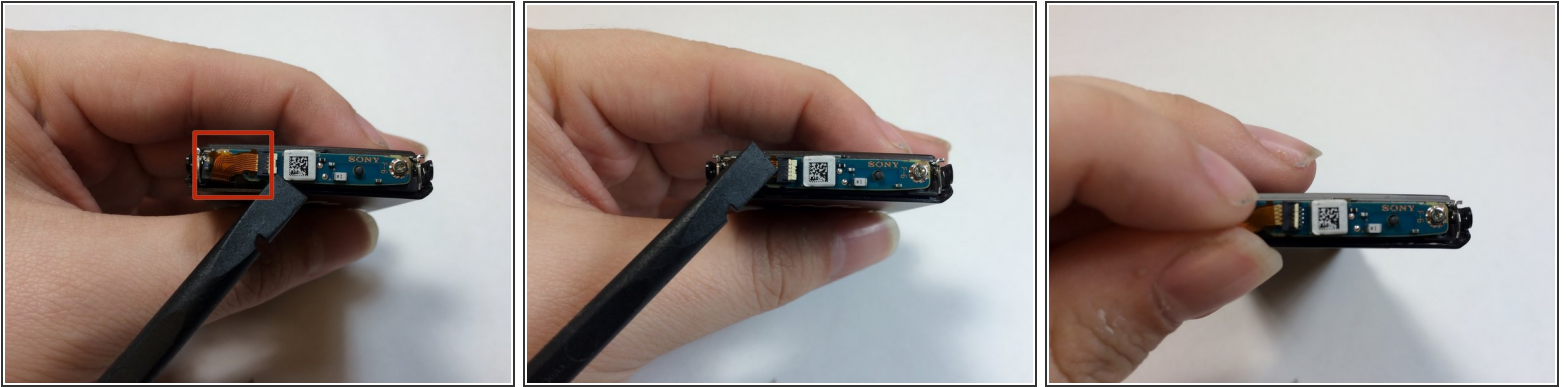
### Step 4



- Carefully pull the top piece away from the device.



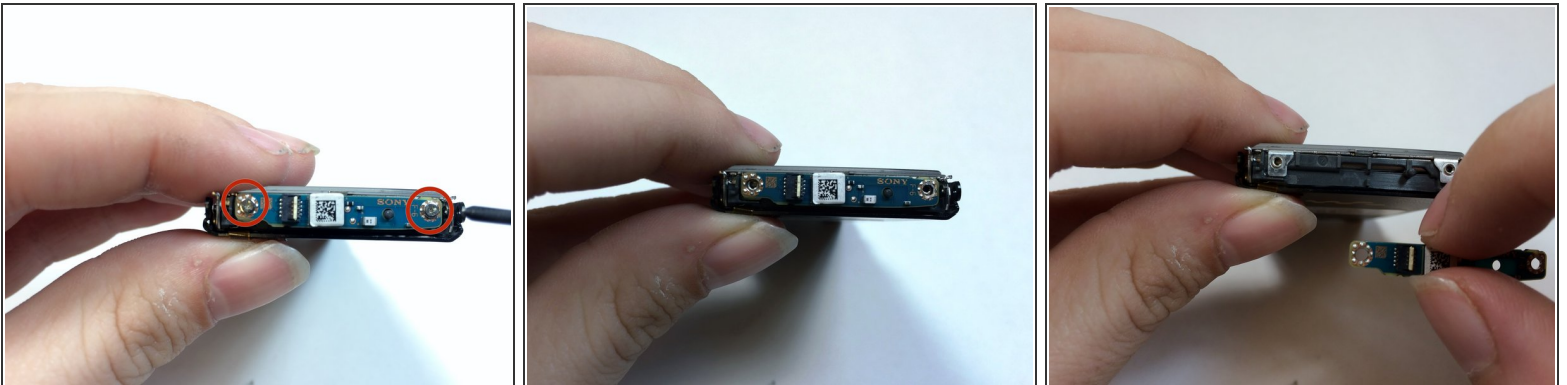
## Step 5 — Removing the Bluetooth module



- Use the flat end of the spudger to flip up the retaining flap for the bluetooth module.

⚠ Be sure to lift up on the retaining flap, and not the socket itself.

## Step 6



- Remove the two 1.8mm silver Phillips screws on the Bluetooth module.
- Lift up on and remove the Bluetooth module.
- ⓘ The ribbon cable must first be removed in order to access the highlighted screw.

To reassemble your device, follow these instructions in reverse order.