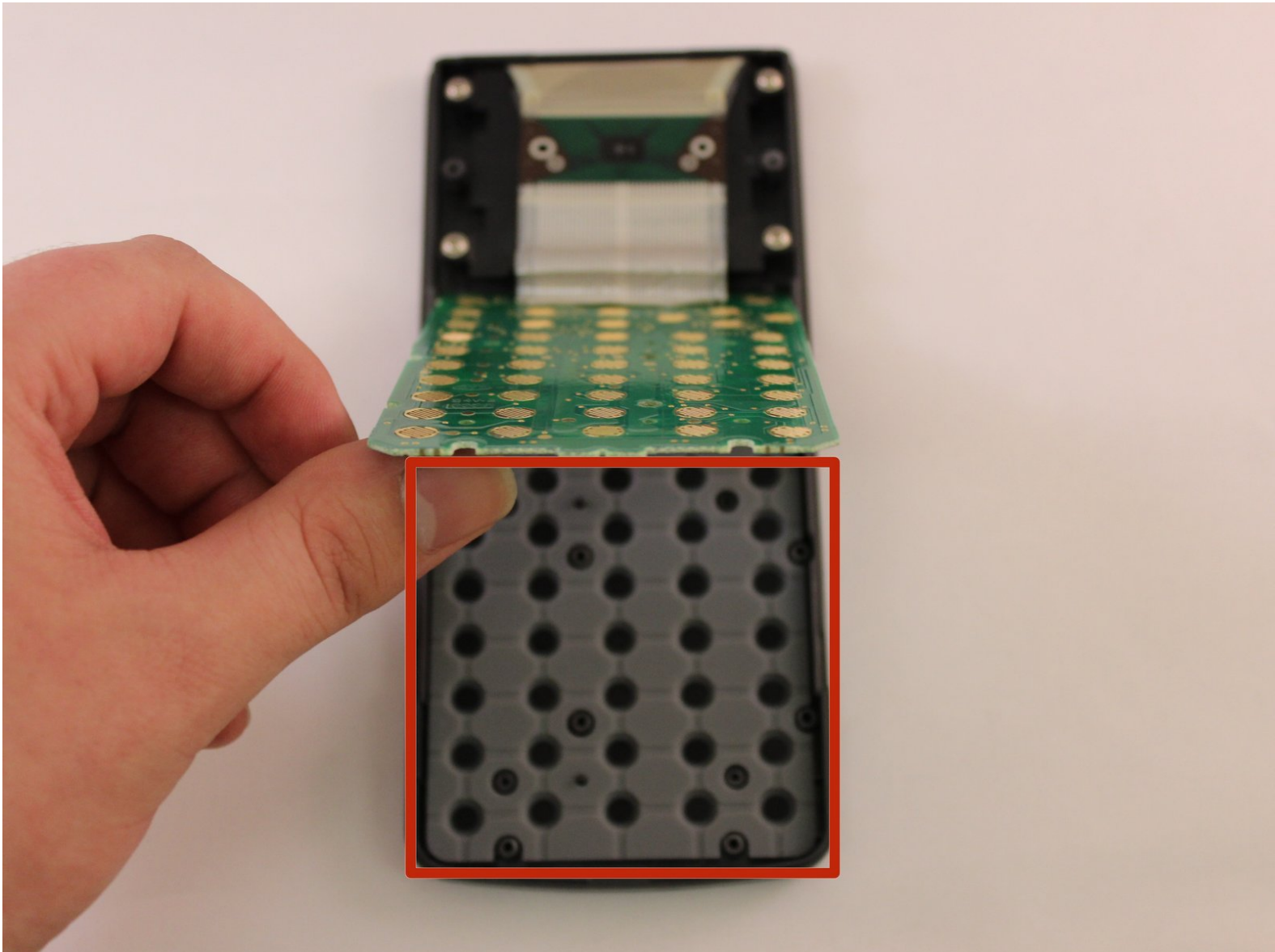




# Texas Instruments TI-80 Keyboard Mat Replacement

This guide will show you how to access the keyboard mat and explain what to look for once there.

Written By: brian decater



---

## INTRODUCTION

Keyboard mats are occasionally prone to wear and tear. Dirt and debris may also find its way onto the pad. This guide will help you get to the keyboard mat to clean or replace it.

---



### TOOLS:

- [Spudger](#) (1)
  - [Phillips #0 Screwdriver](#) (1)
  - [T6 Torx Screwdriver](#) (1)
  - [iFixit Opening Tools](#) (1)
-

## Step 1 — Batteries



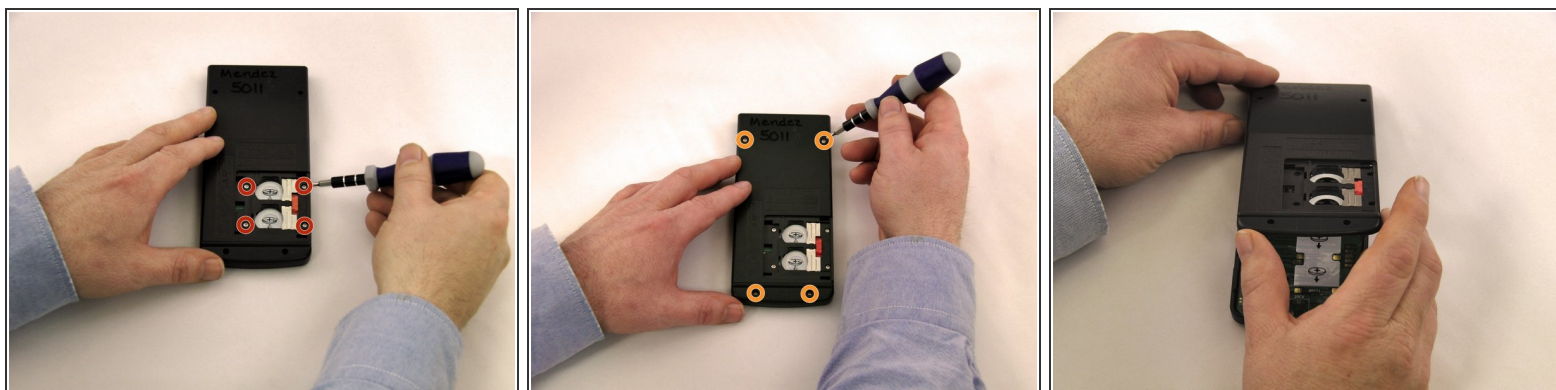
- Locate battery cover on the back of the case.
- Slide battery cover to the right reveal the batteries.

## Step 2



- Remove battery cover.
- Slide the red lock down.
  - Slide the metal tab to the right of the top battery.
- Remove the 3-Volt Lithium Coin Cell Battery.
- Slide the red lock up.
  - Slide the metal tab to the right of the bottom battery.
- Remove the 3-Volt Lithium Coin Cell Battery.

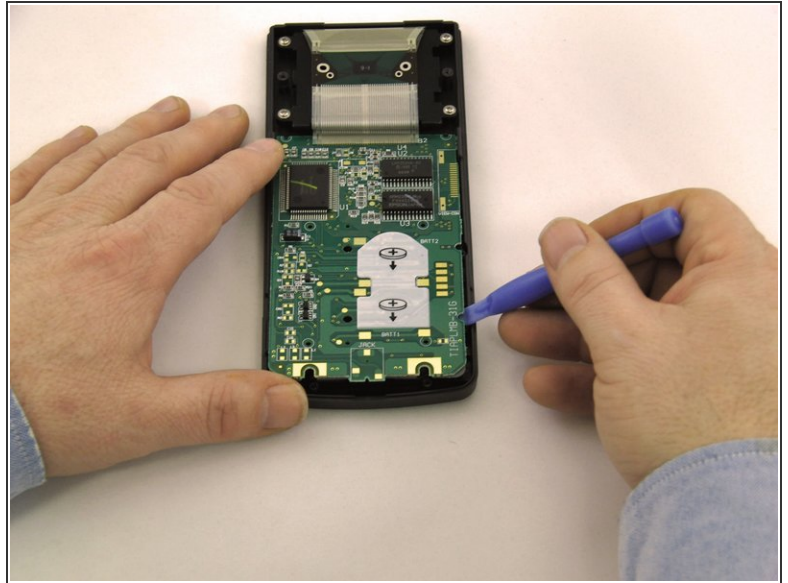
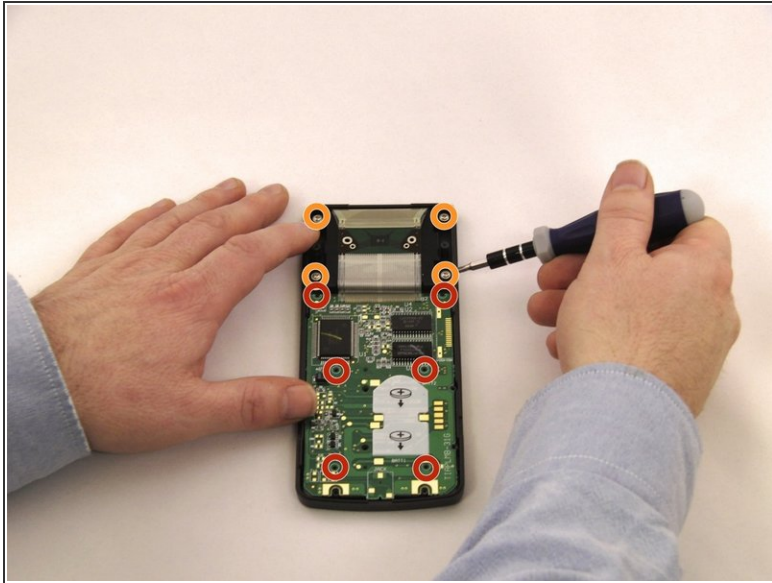
## Step 3 — Back Case



- Using a Torx, T-6 star-bit screwdriver, unscrew four 7.38 mm screws from battery housing.
- Unscrew four 7.15 mm screws from back casing.
- Using the blue plastic opener tool along the seam of the case, pry off front casing.
- ⓘ Start prying from the bottom of the calculator as the casing hooks into the top.

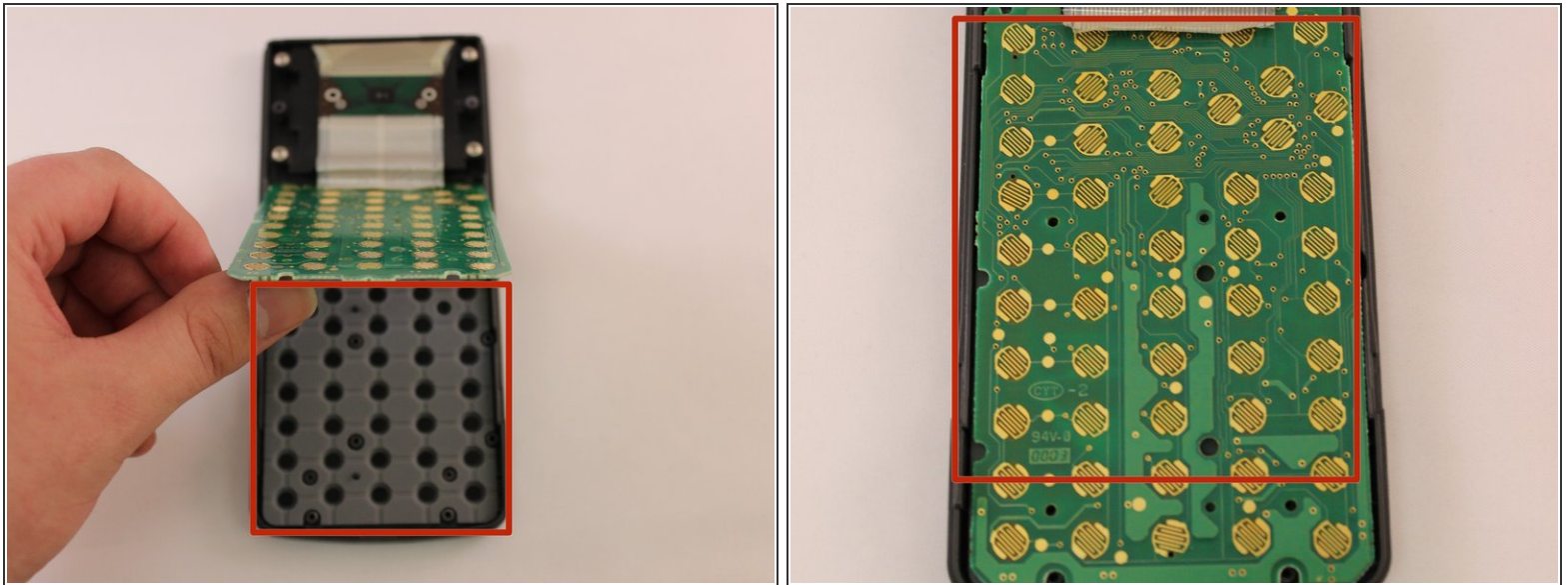


## Step 4 — Motherboard and Screen



- Using a Philips PH0 screwdriver, remove the 6 screws. 2 from the top of the Motherboard, 2 from the middle, and 2 from the bottom of the Motherboard.
- Using a Phillips Ph0 screwdriver, remove 4 screws from the screen mount.
  - Using the blue plastic opening tool, pry the Motherboard up.
  - Using the blue plastic opening tool, pry up the screen from the screen mount.

## Step 5 — Check keyboard mat



- Check the rubber mat for damage or obstruction at the location of non-functioning buttons.
- Flip the mat over to assess dirt and damage.
- ⓘ Replace the mat if it is damaged.
- ⓘ Clean off the back of the Motherboard as necessary. The mat lies on top, so dirt and debris may build up. Repeat cleaning as needed.

To reassemble your device, follow these instructions in reverse order.