



Acer Aspire One ZG5 Wireless Card Replacement

This guide will show you how to install a wireless card.

Written By: Doug Gallatin



INTRODUCTION

You will have to remove several screws and a couple of cables on the bottom of the ZG5 to remove or replace the wireless card.



TOOLS:

- [Phillips #00 Screwdriver](#) (1)
-

Step 1 — Battery



- Turn the netbook upside down with the battery at the top, facing away from you.

Step 2



- Unlock the battery by sliding the switch located near the left hinge to the left "unlocked" position.

Step 3



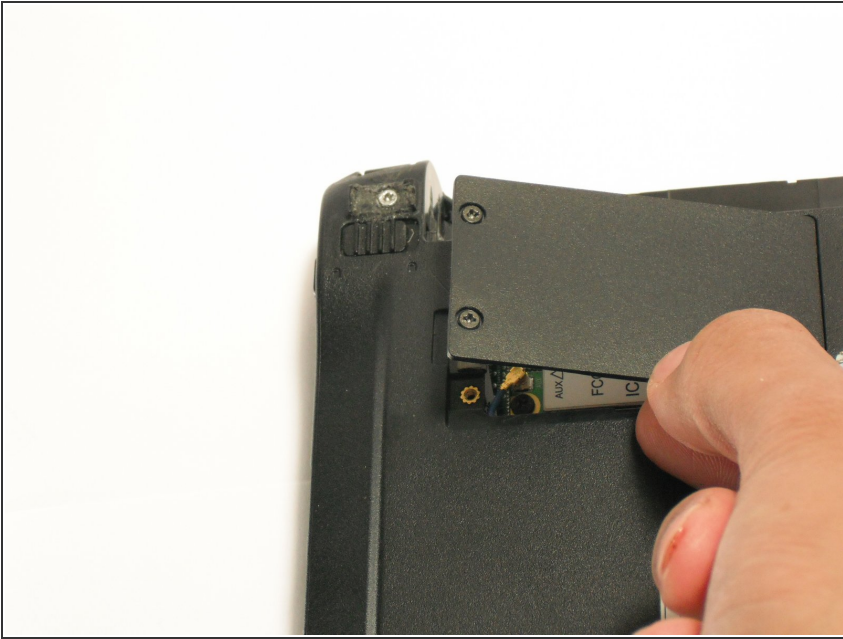
- Slide the latch located on the opposite hinge from the lock while pushing the battery up.

Step 4 — Wireless Card



- Gently loosen the two Phillips #0 screws in the small panel that covers the wireless card.
- ⓘ These screws are built into the panel and aren't meant to be completely removed.

Step 5



- Lift up the panel and remove it from the case.

Step 6



- Disconnect the two antenna cables from the left side of the wireless card.

Step 7



- Remove the single 3.9 mm Phillips #1 screw from the bottom left of the wireless card.

Step 8



- Gently lift up the left side of the wireless card and slide the card out of its socket.

To reassemble your device, follow these instructions in reverse order.